

Landscaping Plan - Public Realm Improvements

Softscape

In order to encourage pedestrians and cyclists to use Cawthra Road as an active transportation corridor, it is important to create an environment that provides a personal sense of scale and safety. This is best accomplished by planting trees in the boulevard to provide shade for pedestrians and cyclists, and a feeling of separation from vehicular traffic where possible. Cawthra Road has the benefit of existing mature trees that already contribute positively and significantly to the public realm. During detailed design, effort should be made to protect and preserve as many existing trees as possible by modifying sidewalk or cycle track alignments where possible. Creating sharp bends around trees should be avoided for the safety of cyclists and pedestrians with visual impairments.

Enhancement of planting should include new tree planting at spacing of 6 – 7 meters for full form deciduous trees (Table 2), and a spacing of 3 – 6 meters for small form deciduous trees (Table 1) under hydro lines. This spacing will allow trees to develop a full crown without over-crowding, while being close enough to create a continuous canopy. Not only does an enhanced and dense tree canopy along this corridor create an inviting environment for residents engaging in active transportation, it also has the added benefit of improving air quality by intercepting particulates and absorbing carbon.

Given the proximity of residential neighbourhoods to this corridor, consideration should be given to creating a sense of arrival with enhanced planting beds of ornamental flowering trees, shrubs, perennials and ornamental grasses at intersection nodes (i.e. Cawthra and Rathburn). These enhanced plantings should focus on low maintenance requirements and should not impede visibility or sightlines/sight triangles.

Table 1 – Recommended Small Form / Hydro Form Trees

Scientific Name	Common Name
<i>Acer ginnala</i>	Amur Maple
<i>Malus 'Indian Summer'</i>	Indian Summer Crabapple
<i>Malus 'Brandywine'</i>	Brandywine Crabapple
<i>Amelanchier laevis</i>	Allegheny Serviceberry
<i>Pyrus fauriei 'Korean Sun'</i>	Korean Sun Pear

Table 2 – Recommended Full Form Trees

Scientific Name	Common Name
<i>Celtis occidentalis</i>	Common Hackberry
<i>Quercus macrocarpa</i>	Burr Oak
<i>Acer x freemanii</i>	Freeman Maple
<i>Acer x freemanii 'Jeffsred'</i>	Autumn Blaze Maple
<i>Ginkgo biloba</i>	Ginkgo
<i>Gleditsia tricanthos var. inermis 'Shademaster'</i>	Shademaster Honeylocust
<i>Gleditsia tricanthos var. inermis 'Skycole'</i>	Skycole Honeylocust
<i>Corylus colurna</i>	Turkish Hazel
<i>Phellodendron amurense</i>	Amur Cork

Hardscape

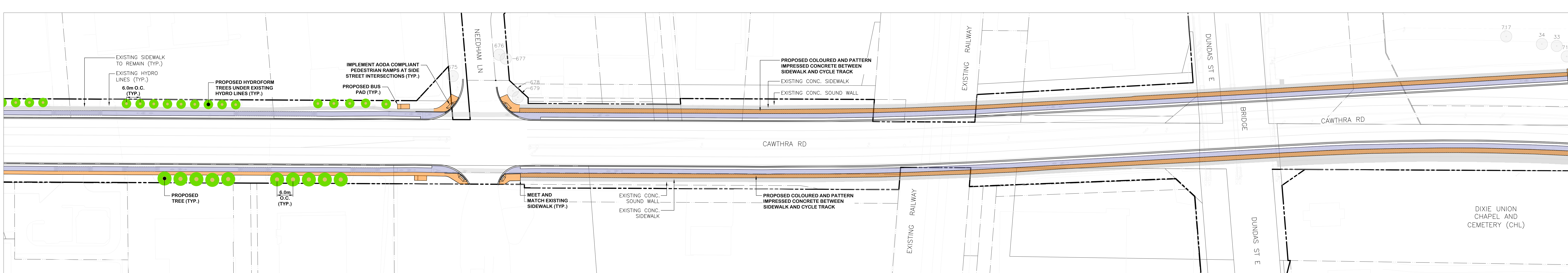
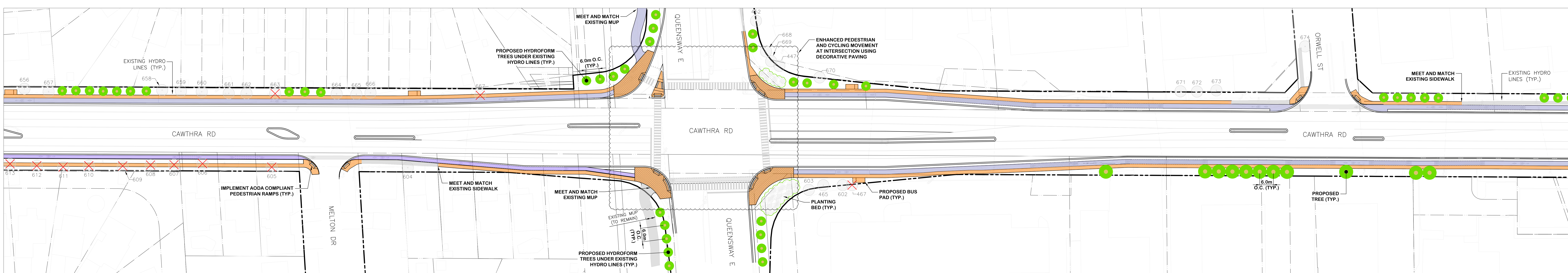
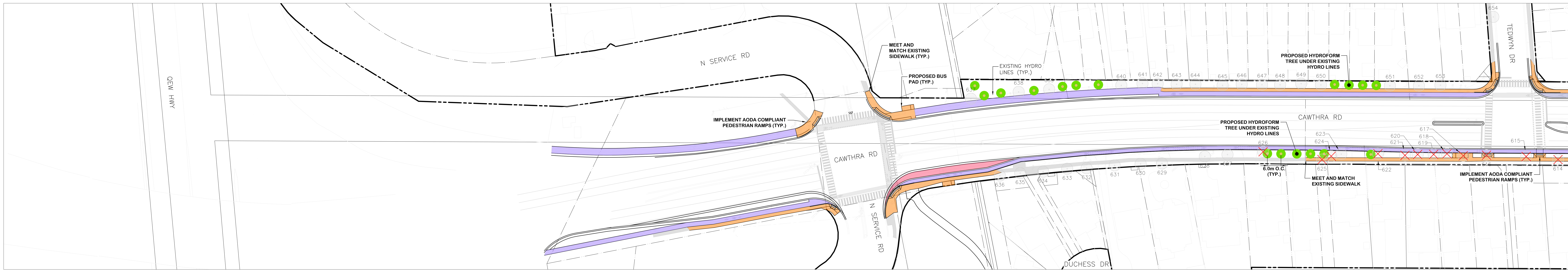
In addition to trees, unit paved surfaces contribute positively to creating a public realm that is unique to a neighbourhood or active transportation corridor. Unit paving or decorative concrete should be employed fully at intersections, and in the boulevard where space for sod would be less than 1.0m wide or where sod would be difficult to maintain (i.e. splash strips or under bridges).

For safety, and to encourage the comfort of pedestrians, all sidewalks should continue straight through driveways to give pedestrians priority over vehicles.

Benches should be provided at regular intervals along the sidewalk and intersections to provide a resting location for elderly community members or those with mobility aids. Benches should be located along the side of the sidewalk that is away from the cycle track and mounted on a concrete base. Benches should meet AODA guidelines.

Cawthra Road Class EA Study

5 0 5 10 20
1:500 (m)

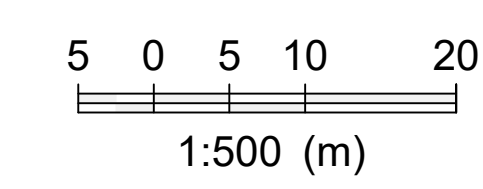


LEGEND:

R.O.W. LIMITS	-----	PROPOSED TREE	●
EXISTING FENCE	-----	PROPOSED PLANTING BED	○
EXISTING INFRASTRUCTURE TO REMAIN	-----	PROPOSED CONCRETE SIDEWALK	■
EXISTING TREE TO BE PRESERVED	○ No.	PROPOSED UNIT PAVING	■
EXISTING TREE TO BE REMOVED	✗ No.	PROPOSED ASPHALT CYCLE TRACK	■
		PROPOSED TRANSIT LAY-BY	■

DRAFT
NOT FOR CONSTRUCTION

Cawthra Road Class EA Study



LEGEND:

R.O.W. LIMITS	---
EXISTING FENCE	-----
EXISTING INFRASTRUCTURE TO REMAIN	-----
EXISTING TREE TO BE PRESERVED	○ No.
EXISTING TREE TO BE REMOVED	✗ No.
PROPOSED TREE	●
PROPOSED PLANTING BED	○
PROPOSED CONCRETE SIDEWALK	Orange fill
PROPOSED UNIT PAVING	Light Blue fill
PROPOSED ASPHALT CYCLE TRACK	Dark Blue fill
PROPOSED TRANSIT LAY-BY	Pink fill

DRAFT
NOT FOR CONSTRUCTION