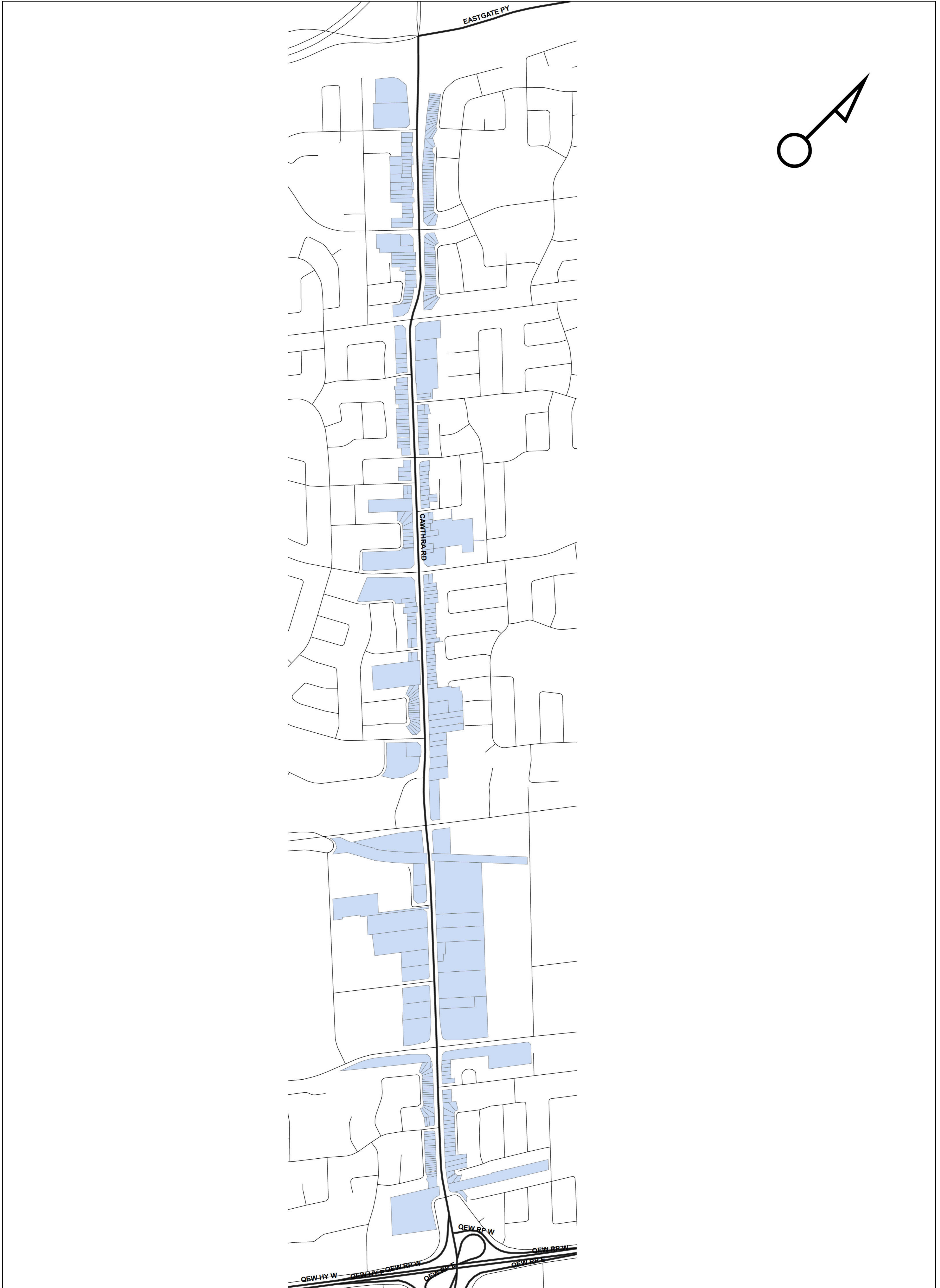


**NOTICES, TWEETS AND NEWSPAPER ADVERTISEMENTS**

# Properties Selected for Mailing Addresses





# Emergency shelters full with people trying to dodge the heat

By Rachael Williams  
@rachwilliams86

Peel shelters are jam-packed this summer and staff expect it to remain this way until early fall.

“Seasonally, we see a higher usage in the summer...It’s harder to stay cool in the heat than stay warm in the cold,” said Grace Caron, director of client relation-

ships and community access for the Region of Peel.

Caron attributes part of the reason for the increase to the extreme weather hitting southern Ontario, which has seen 11 heat alerts and four extreme heat alerts already this summer.

Children out of school for two months during the summer are another contributing factor to the

overwhelming number of Peel residents visiting emergency shelters.

“It’s very different in July and August, the needs are different. They (kids) have to be entertained and supported all day. They also need to be fed all day long. And if you can’t afford air conditioning, you’re constantly looking for ways to keep cool,” said Shelley White,

president and CEO at United Way of Peel Region, an organization that provides funding and support to community-owned shelters.

White said community-owned shelters – Our Place Peel (14 beds), Family Life Resource Centre (18 rooms) and Interim Place one and two (54 beds) – are filled to the brim.

The Region of Peel owns three shelters, all currently at capacity – the Cawthra Road Shelter (119 beds), Peel Family shelter (60 rooms) and the Wilkinson Road Shelter (86 beds). Average length of stay varies from seven to 26 days.

“From what I understand, Toronto and a lot of other communities are also experiencing a higher volume this summer,” said Fran Kane, the executive director from Salvation Army, contracted by the Region to provide administration and programming for its emergency shelters.

Caron noted, although volumes may be similar between Toronto, Mississauga and Brampton, the approach is vastly different.

Toronto shelters are required to turn people away when at capacity.

“In Peel, we very much operate from a housing-first philosophy where an assessment is done and we try and figure out how to reintegrate someone into society and secure them housing,” noted Caron.

This is possible through the use of housing workers, who find opportunities for shelter through transitional or supportive housing, such as Peel Youth Village, Angela’s Place and St. Leonard’s Place

They also establish relationships with landlords across Peel (roughly 100) in hopes of securing stable housing.

“Our policy is that we will support people – nobody in the Region of Peel will not have a place to go,” said Caron.

What is unique about Peel Region is that most of the people who visit emergency shelters or require transitional or supportive housing are hard-working men and women with families.

“They’re your neighbours, your

friends, people you see walking down the street,” said Janet Egleston, communications specialist with the Region.

They live in suburban cities, but face urban challenges.

“The concept of hidden homelessness in a suburban environment is very much our reality and our response to homelessness as a whole is varied as a result of that,” said Caron.

Anita Stellinga, vice president of community investment for United Way of Peel said even in Caledon, with its beautiful, sprawling farms, there are people living out of their cars or on the streets.

“People that aren’t close to this issue aren’t even aware that homelessness exists, and they don’t expect it because it’s an urban problem.”

But precarious employment, insufficient wages, fewer job opportunities, lack of affordable housing, increasing populations and mental health issues are not segregated to the country’s urban hot spots, she said.

The City of Mississauga is developing an affordable housing strategy with developers, industry leaders, non-profit organizations and various levels of government.

The Region is also looking at vacant properties suitable for affordable housing and in April, approved a new youth shelter in Brampton.

“But in the meantime we continue to have growth in the Region of Peel. Demand for services as a whole is increasing and the resources are staying the same,” said Caron.

The total homelessness budget for the Region is \$26.56 million annually, with \$12.36 million coming from the regional tax base and \$14.2 million from the province and incidental revenues, such as rent paid by those in transitional housing.

“But bottom line, we need increased investments,” stated White.

The News and The Guardian recently launched a campaign to provide assistance to those experiencing homelessness in Peel as part of a special investigation.

Region of Peel  
Working for you

## Public Notice

### NOTICE OF STUDY COMMENCEMENT

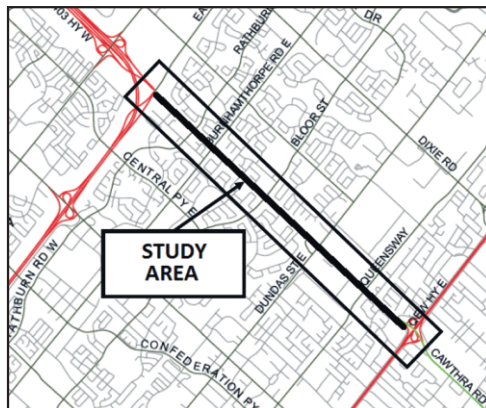
**CAWTHRA ROAD FROM QUEEN ELIZABETH WAY (QEW) TO EASTGATE PARKWAY**  
The Region has initiated a Municipal Class Environmental Assessment (EA)  
for Cawthra Road between QEW and Eastgate Parkway

#### The Project

The study will examine the needs and opportunities for transportation improvements within the Cawthra Road corridor to:

- Better serve the needs of all road users;
- Maximize the use and capacity of the road right-of-way; and
- Improve operations and safety for all road users.

A feasibility study was completed in 2014 that concluded that a widening of Cawthra Road from QEW to Eastgate Parkway is not warranted. Recommendations include maintaining the existing four lane cross-section (with centre turn-lane in some sections) with intersection improvements, and exploring opportunities to enhance active transportation by providing on-road bicycle and/or boulevard multi-use facilities. The EA study will build upon the findings of the feasibility study.



#### The Process

The study is being conducted in compliance with Schedule ‘B’ of the Municipal Class EA, which is approved under the Ontario Environmental Assessment Act.

#### Public Consultation

Public consultation is an integral component of the Municipal Class EA process and opportunities to comment are welcomed throughout the entire study. Consultation activities will be announced at key milestones in the project. At the conclusion of the study, an EA report will be filed with the Ministry of the Environment and Climate Change, and made available to agencies and the public for a 30 calendar day public review period.

#### Contact

You can provide comment on the study commencement and stay in touch with the project online at: <http://www.peelregion.ca/pw/transportation/assessments.htm>

or contact the project manager:

#### Gino Dela Cruz, P.Eng.

Project Manager, Transportation Division  
Region of Peel  
10 Peel Centre Dr., Suite B, 4<sup>th</sup> Floor  
Brampton, ON L6T 4B9  
Phone: 905-791-7800 ext. 7805  
Fax: 905-791-1442  
E-mail: [gino.delacruz@peelregion.ca](mailto:gino.delacruz@peelregion.ca)

The Region of Peel is committed to ensure that all Regional services, programs and facilities are inclusive and accessible for persons with disabilities. Please contact the Project Manager if you need any disability accommodation to participate in the study.

With the exception of personal information, all comments will become part of the public record of the study. The study is being conducted according to the requirements of the Municipal Class Environmental Assessment, which is a planning process approved under Ontario’s Environmental Assessment Act.

# Councillor to meet with Walmart CEO to discuss Lakeview store

By Louie Rosella  
@LouieMissiNews

Ward 1 Coun. Jim Tovey says he will be meeting with new Walmart Canada CEO Lee Tappenden next month in an effort to determine whether the North American retail giant will be opening a store in Lakeview.

“That’s the plan (to open a Walmart),” Tovey said in an interview from Windsor recently, where he was attending the annual Association of Municipalities of Ontario conference. “But there have been a lot of rumours going around and it’s my job to find out for the residents.”

Tovey said he also plans to show the new CEO some of the projects in the works to revitalize Lakeview’s waterfront.

Speculation began to swirl in the community after a Mississauga News story this past spring in which Trinity Development repeatedly refused to comment on reports that Walmart is no longer part of its massive commercial and retail project on Lakeshore Road.

The News reported earlier this year that Walmart would be opening a location on the Lakeview property just west of Cawthra Road — information that was confirmed by Mike Bottigoni, senior vice-president of construction for Trinity.

However, the large development firm wouldn’t make the same affirmation in May when asked to address speculation in the community that a Walmart store is no longer in the plans. Senior project

manager Brad Desrocher would only say “no comment.”

Desrocher and other Trinity executives whom The News reached out to recently have not replied to requests for comment on the project. Desrocher deferred the inquiry to Walmart.

When asked if the store is going ahead in Lakeview, Walmart spokesperson Felicia Fefer replied “we do not have anything further to share at this time.”

Tovey said from what he understands, Trinity has a 20-year lease with Walmart that the retail giant “can’t get out of.”

Tovey said he was told several months ago by Trinity that Walmart would have an 84,000-square-ft. location on the Trinity land.

He said if plans have changed, he hasn’t been made aware, but didn’t hide his opinion on the possibility of a Walmart no longer coming to Lakeview.

“The one thing that would concern me is dead retail space,” he said in a May interview. “I’m always concerned when there are empty stores. It wouldn’t be nice to see 84,000 square feet of space sitting there with boards on it.”

Signs on the Trinity land indicating a Walmart would be one of the retailers have been boarded up with metal plates for at least a few months, Tovey said.

The idea of a Walmart in Lakeview has been met with mixed public opinion, with some saying it will kill the community’s distinct village character and devastate small mom-and-pop shops, while oth-

ers maintain it will actually boost business for local stores by bringing more vehicular and pedestrian traffic.

Tovey said the new store is similar to Walmart’s “Urban 90” stores, one of which opened in Toronto in 2012, which are dramatically smaller than the traditional supercentres and are designed for dense urban markets in which other tenants can

occupy the building because of the set-up on the second floor.


The plan by Trinity Developments, which owns 14.5 acres of land, is to open an anchor store as part of a phased, mixed-use development that also includes residential buildings, office space, shopping and cafes on the prime piece of land at Lakeshore Road East and Enola Avenue.

The project will create 1,500 jobs and generate \$3 million in annual taxes, Trinity said back in 2013.

Walmart will also be opening a 136,000-sq.-ft. Supercentre at Erin Mills Town Centre, scheduled to open before the end of the year, Fefer said, adding the retailer’s South Common Mall location will remain open.



Jim Tovey



## Public Notice

### NOTICE OF STUDY COMMENCEMENT

#### CAWTHRA ROAD FROM QUEEN ELIZABETH WAY (QEW) TO EASTGATE PARKWAY

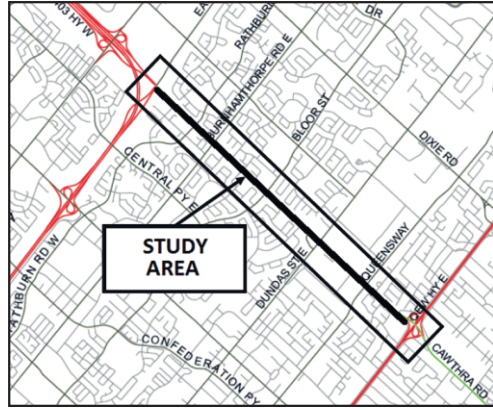
**The Region has initiated a Municipal Class Environmental Assessment (EA) for Cawthra Road between QEW and Eastgate Parkway**

#### The Project

The study will examine the needs and opportunities for transportation improvements within the Cawthra Road corridor to:

- Better serve the needs of all road users;
- Maximize the use and capacity of the road right-of-way; and
- Improve operations and safety for all road users.

A feasibility study was completed in 2014 that concluded that a widening of Cawthra Road from QEW to Eastgate Parkway is not warranted. Recommendations include maintaining the existing four lane cross-section (with centre turn-lane in some sections) with intersection improvements, and exploring opportunities to enhance active transportation by providing on-road bicycle and/or boulevard multi-use facilities. The EA study will build upon the findings of the feasibility study.



#### The Process

The study is being conducted in compliance with Schedule ‘B’ of the Municipal Class EA, which is approved under the Ontario Environmental Assessment Act.

#### Public Consultation

Public consultation is an integral component of the Municipal Class EA process and opportunities to comment are welcomed throughout the entire study. Consultation activities will be announced at key milestones in the project. At the conclusion of the study, an EA report will be filed with the Ministry of the Environment and Climate Change, and made available to agencies and the public for a 30 calendar day public review period.

#### Contact

You can provide comment on the study commencement and stay in touch with the project online at: <http://www.peelregion.ca/pw/transportation/assessments.htm> or contact the project manager:

**Gino Dela Cruz, P.Eng.**  
Project Manager, Transportation Division  
Region of Peel  
10 Peel Centre Dr., Suite B, 4<sup>th</sup> Floor  
Brampton, ON L6T 4B9  
Phone: 905-791-7800 ext. 7805  
Fax: 905-791-1442  
E-mail: [gino.delacruz@peelregion.ca](mailto:gino.delacruz@peelregion.ca)

The Region of Peel is committed to ensure that all Regional services, programs and facilities are inclusive and accessible for persons with disabilities. Please contact the Project Manager if you need any disability accommodation to participate in the study.

With the exception of personal information, all comments will become part of the public record of the study. The study is being conducted according to the requirements of the Municipal Class Environmental Assessment, which is a planning process approved under Ontario’s Environmental Assessment Act.

## Right to vote marked

Peel Regional Police Chief Jennifer Evans and Mississauga Mayor Bonnie Crombie were among a group of outstanding leaders invited to the opening of the Canadian National Exhibition (CNE) last Friday to mark the 100th anniversary of women’s first right to vote.

Business and community leaders were invited to attend the ceremony as “women of distinction.”

It all started in Manitoba. Women

were granted the right to vote in a provincial election in that province on Jan. 28, 1916. Saskatchewan and Alberta followed that same year, on March 14 and April 19 respectively.

British Columbia (April 5) and Ontario (April 12) granted women the right to vote the following year.

Women in Quebec were not granted the right to vote until 1940, the last province to do so.



August 15, 2016

<MAIL MERGE>

Dear <MAILMERGE>:

**RE: Notice of Study Commencement –  
Cawthra Road from Queen Elizabeth Way (QEW) to Eastgate Parkway**

The Region of Peel has initiated a Municipal Class Environmental Assessment (Class EA) for Cawthra Road from QEW to Eastgate Parkway. The purpose of this letter is to inform you of the study and to invite your input. A copy of the Notice of Commencement is attached.

The study is being conducted in accordance with the requirements for a Schedule 'B' Municipal Class EA, which is approved under the Ontario Environmental Assessment Act.

A feasibility study was completed in 2014 that concluded that a widening of Cawthra Road from QEW to Eastgate Parkway is not warranted, and recommended maintaining the existing four lane cross-section (with centre turn lane in some sections) with intersection improvements, and explore opportunities to enhance active transportation by providing on-road bicycle and/or boulevard multi-use facilities. The EA study will build upon the findings of the feasibility study.

Public consultation is an integral component of the Municipal Class EA process and opportunities to comment are welcomed throughout the entire study. Consultation activities will be announced at key milestones in the project. At the conclusion of the study, an EA report will be filed with the Ministry of the Environment and Climate Change, and made available to agencies and the public for a 30 calendar day public review period.

If you wish to provide any comments on this study, we request that your comments be directed to the Project Manager on the attached Notice of Study Commencement.

Sincerely,



**Gino Dela Cruz, P.Eng.**  
Project Manager | Transportation Division  
Region of Peel

Phone: 905-791-7800 ext. 7805  
Fax: 905-791-1442  
Email: gino.delacruz@peelregion.ca

Encl.: Notice of Study Commencement

---

**Public Works**

10 Peel Centre Dr., Suite B, Brampton, ON L6T 4B9  
Tel: 905-791-7800 [www.peelregion.ca](http://www.peelregion.ca)

## NOTICE OF STUDY COMMENCEMENT

### CAWTHRA ROAD FROM QUEEN ELIZABETH WAY (QEW) TO EASTGATE PARKWAY

The Region has initiated a Municipal Class Environmental Assessment (EA) for Cawthra Road between QEW and Eastgate Parkway

#### The Project

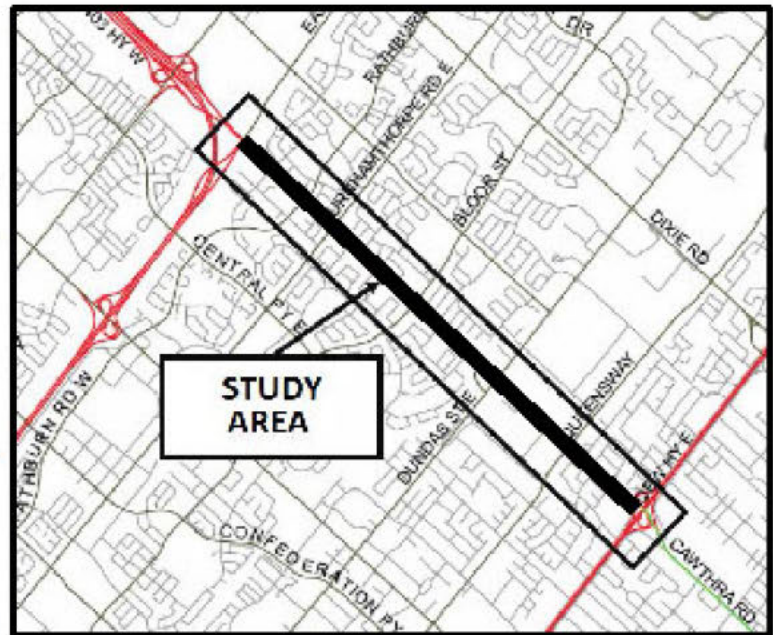
The study will examine the needs and opportunities for transportation improvements within the Cawthra Road corridor to:

- Better serve the needs of all road users;
- Maximize the use and capacity of the road right-of-way; and
- Improve operations and safety for all road users.

A feasibility study was completed in 2014 that concluded that a widening of Cawthra Road from QEW to Eastgate Parkway is not warranted. Recommendations include maintaining the existing four lane cross-section (with centre turn-lane in some sections) with intersection improvements, and exploring opportunities to enhance active transportation by providing on-road bicycle and/or boulevard multi-use facilities. The EA study will build upon the findings of the feasibility study.

#### The Process

The study is being conducted in compliance with Schedule 'B' of the Municipal Class EA, which is approved under the Ontario Environmental Assessment Act.



#### Public Consultation

Public consultation is an integral component of the Municipal Class EA process and opportunities to comment are welcomed throughout the entire study. Consultation activities will be announced at key milestones in the project. At the conclusion of the study, an EA report will be filed with the Ministry of the Environment and Climate Change, and made available to agencies and the public for a 30 calendar day public review period.

#### Contact

You can provide comment on the study commencement and stay in touch with the project online at:

<http://www.peelregion.ca/pw/transportation/assessments.htm>

or contact the project manager:

Gino Dela Cruz, P.Eng.  
 Project Manager, Transportation Division  
 Region of Peel  
 10 Peel Centre Dr., Suite B, 4<sup>th</sup> Floor  
 Brampton, ON L6T 4B9  
 Phone: 905-791-7800 ext. 7805  
 Fax: 905-791-1442  
 E-mail: [gino.delacruz@peelregion.ca](mailto:gino.delacruz@peelregion.ca)

The Region of Peel is committed to ensure that all Regional services, programs and facilities are inclusive and accessible for persons with disabilities. Please contact the Project Manager if you need any disability accommodation to participate in the study.



August 15, 2016

<MAIL MERGE>

Dear <MAILMERGE>:

**RE: Notice of Study Commencement –  
Cawthra Road from Queen Elizabeth Way (QEW) to Eastgate Parkway**

The Region of Peel has initiated a Municipal Class Environmental Assessment (Class EA) for Cawthra Road from QEW to Eastgate Parkway. The purpose of this letter is to inform you of the study and to invite your input. A copy of the Notice of Commencement is attached.

The study is being conducted in accordance with the requirements for a Schedule 'B' Municipal Class EA, which is approved under the Ontario Environmental Assessment Act.

A feasibility study was completed in 2014 that concluded that a widening of Cawthra Road from QEW to Eastgate Parkway is not warranted, and recommended maintaining the existing four lane cross-section (with centre turn lane in some sections) with intersection improvements, and explore opportunities to enhance active transportation by providing on-road bicycle and/or boulevard multi-use facilities. The EA study will build upon the findings of the feasibility study.

Public consultation is an integral component of the Municipal Class EA process and opportunities to comment are welcomed throughout the entire study. Consultation activities will be announced at key milestones in the project. At the conclusion of the study, an EA report will be filed with the Ministry of the Environment and Climate Change, and made available to agencies and the public for a 30 calendar day public review period.

You may use the enclosed response form to request additional information or provide comments about the study.

Sincerely,



**Gino Dela Cruz, P.Eng.**  
Project Manager | Transportation Division  
Region of Peel

Phone: 905-791-7800 ext. 7805  
Fax: 905-791-1442  
Email: [gino.delacruz@peelregion.ca](mailto:gino.delacruz@peelregion.ca)

Encl.: Notice of Study Commencement and Comment Form

---

**Public Works**

10 Peel Centre Dr., Suite B, Brampton, ON L6T 4B9  
Tel: 905-791-7800 [www.peelregion.ca](http://www.peelregion.ca)

## NOTICE OF STUDY COMMENCEMENT

### CAWTHRA ROAD FROM QUEEN ELIZABETH WAY (QEW) TO EASTGATE PARKWAY

The Region has initiated a Municipal Class Environmental Assessment (EA) for Cawthra Road between QEW and Eastgate Parkway

#### The Project

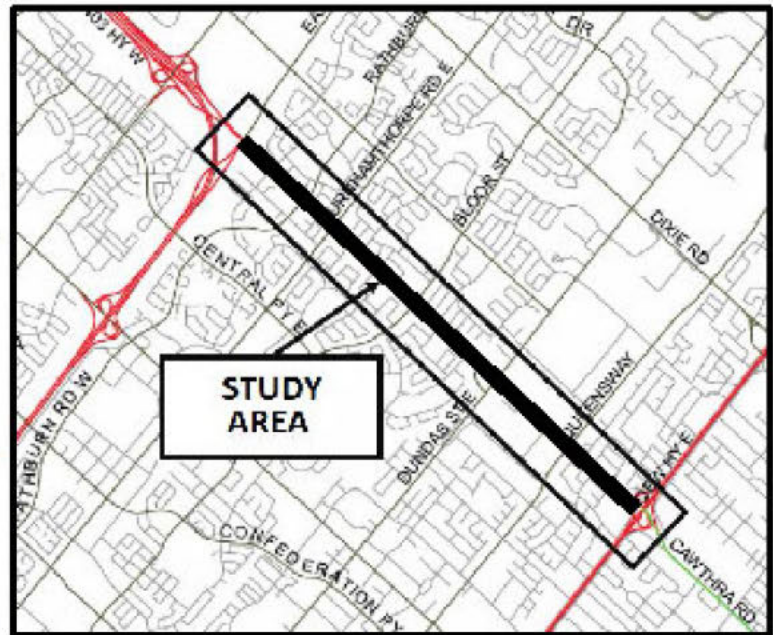
The study will examine the needs and opportunities for transportation improvements within the Cawthra Road corridor to:

- Better serve the needs of all road users;
- Maximize the use and capacity of the road right-of-way; and
- Improve operations and safety for all road users.

A feasibility study was completed in 2014 that concluded that a widening of Cawthra Road from QEW to Eastgate Parkway is not warranted. Recommendations include maintaining the existing four lane cross-section (with centre turn-lane in some sections) with intersection improvements, and exploring opportunities to enhance active transportation by providing on-road bicycle and/or boulevard multi-use facilities. The EA study will build upon the findings of the feasibility study.

#### The Process

The study is being conducted in compliance with Schedule 'B' of the Municipal Class EA, which is approved under the Ontario Environmental Assessment Act.



#### Public Consultation

Public consultation is an integral component of the Municipal Class EA process and opportunities to comment are welcomed throughout the entire study. Consultation activities will be announced at key milestones in the project. At the conclusion of the study, an EA report will be filed with the Ministry of the Environment and Climate Change, and made available to agencies and the public for a 30 calendar day public review period.

#### Contact

You can provide comment on the study commencement and stay in touch with the project online at:

<http://www.peelregion.ca/pw/transportation/assessments.htm>

or contact the project manager:

Gino Dela Cruz, P.Eng.  
 Project Manager, Transportation Division  
 Region of Peel  
 10 Peel Centre Dr., Suite B, 4<sup>th</sup> Floor  
 Brampton, ON L6T 4B9  
 Phone: 905-791-7800 ext. 7805  
 Fax: 905-791-1442  
 E-mail: [gino.delacruz@peelregion.ca](mailto:gino.delacruz@peelregion.ca)

The Region of Peel is committed to ensure that all Regional services, programs and facilities are inclusive and accessible for persons with disabilities. Please contact the Project Manager if you need any disability accommodation to participate in the study.



---

**Comment Sheet**

August 15, 2016

Please Return the Completed Comment Sheet to:

**Gino Dela Cruz, P.Eng.**

Project Manager, Transportation Division, Region of Peel

10 Peel Centre Drive, Suite B, 4<sup>th</sup> Floor, Brampton, ON L6T 4B9

Phone: 905.791.7800 ext. 7805 Fax: 905.791.1442 Email: gino.delacruz@peelregion.ca

---

**FROM:** MAIL MERGE

---

MAIL MERGE

---

**Re:** Class Environmental Assessment  
Cawthra Road from QEW to Eastgate Parkway

- We have no concerns and do not need to be involved in this study.
- We have no interest/concerns at this time, but wish to remain on the contact list for this study.
- We have the following comment(s) and/or information requirements.

---

**Public Works**

10 Peel Centre Dr., Suite B, Brampton, ON L6T 4B9  
Tel: 905-791-7800 www.peelregion.ca

# MISSISSAUGA MOVES TO ADDRESS ISSUES WITH PEEL AFTER SEPARATION PUSH FAILS

STEVE CORNWELL  
scornwell@metroland.com

Following the decision to keep Peel intact, Mississauga is moving reform the region from the inside.

City council passed a Nov. 6 motion directing Mississauga staff to recommend “fairer” cost-sharing for Peel Regional Police service and to analyze how population and financial contributions factor into the makeup of other regional governments in the province, to prepare for seat-allocation talks ahead of the 2022 municipal election.

The unanimous motion also created a subcommittee to do a “line by line review” of regional agendas to report back to council prior to each Peel session.

Ward 5 Coun. Carolyn Parrish moved the motion, which previously contained a request for the province to commit to separating Peel before the 2022 city elections. During the Nov. 6 council meeting, she said repeating the call for separation with the province “would be beating our heads against a brick wall.”



Torstar file photo  
Mississauga Ward 5 Coun. Carolyn Parrish moved a motion on Nov. 6, aiming to address a number of issues the city has with Peel Region.

“I thought we would look more at some concrete jobs that we can assign to our staff, to ourselves and take down to Queen’s Park and say ‘OK, you’ve tied us up, we’re done,’” she said. “But we have certain serious grievances that need to be addressed on behalf of the citizens of Mississauga.”

Last month, Ontario’s Minister of Municipal Affairs and Housing Steve Clark concluded the Ford government’s regional governance review, an-

nouncing new funding for municipalities in the province and that Peel Region would remain intact.

Mississauga had hoped that the review, which considered the governance, decision-making and service delivery of eight regional municipalities, would be an opportunity to gain independence from Peel.

At the Nov. 6 council meeting, Mississauga Mayor Bonnie Crombie said that the Ford government gave the city “false hope” about a separation from Peel.

In an email, minister of housing spokesperson Dakota Brasier said there was no “predetermined outcome” to the review, and the province has provided Mississauga with funding to find savings, and “improve services that residents depend on.”

Mississauga’s motion also asks the province to immediately allow the city an “enhanced voting member” at regional council. If enacted, it would mean a representative from Mississauga could hold two votes in the event that a member was missing at regional council.

## Public Notice

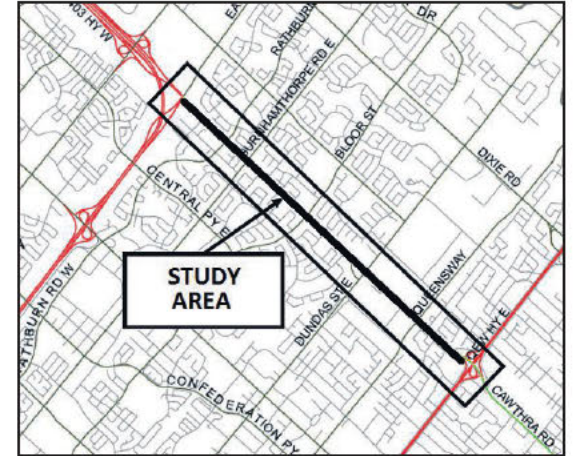
Region  
of Peel  
working with you

### NOTICE OF PUBLIC INFORMATION CENTRE CAWTHRA ROAD FROM QUEEN ELIZABETH WAY (QEW) TO EASTGATE PARKWAY, MISSISSAUGA MUNICIPAL CLASS ENVIRONMENTAL ASSESSMENT STUDY

#### The Study

The Region of Peel is conducting a Class Environmental Assessment (Class EA) Study for Cawthra Road from QEW to Eastgate Parkway in the City of Mississauga (see map). The study is examining the needs and opportunities for transportation improvements within the Cawthra Road corridor to:

- Better serve the needs of all road users,
- Maximize the use and capacity of the road right-of-way, and
- Improve operations and safety for all road users.



A feasibility study was completed in 2014 that concluded that a

widening of Cawthra Road from QEW to Eastgate Parkway is not warranted. Recommendations include maintaining the existing four lane cross-section (with centre turn-lane in some sections) with intersection improvements, and exploring opportunities to enhance active transportation by providing on-road bicycle and/or boulevard multi-use facilities. The Class EA Study will build upon the findings of the feasibility study.

#### The Process

This Study is being conducted in compliance with Schedule ‘B’ of the Municipal Class Environmental Assessment, which is a process approved under the Ontario Environmental Assessment Act.

#### Public Consultation

Public consultation is an important part of the Study. You are invited to attend the Public Information Centre (PIC) for this Study to review the project and discuss your comments with the Project Team. The PIC will present the identified problems and opportunities within the Study corridor and an evaluation of alternative solutions with environmental considerations. A preliminary preferred solution will also be presented.

**Public Information Centre**  
Wednesday, November 27, 2019 – 7 p.m. to 9 p.m.  
Burnhamthorpe Community Centre (Fleetwood Village Room)  
1500 Gulleden Drive, Mississauga, ON L4X 2T7

If you have any questions or comments on the Study or cannot attend the PIC, please contact the Project Manager or visit the project website to view the PIC information and fill out an on-line comment form by **December 13, 2019**:

Sonya Bubas, MCIP, RPP  
Project Manager  
Region of Peel  
10 Peel Centre Drive, Suite B, 4th Floor  
Brampton, ON L6T 4B9  
Tel: 905-791-7800 ext. 7801  
Fax: 905-791-1442  
Email: [sonya.bubas@peelregion.ca](mailto:sonya.bubas@peelregion.ca)

Website: <http://www.peelregion.ca/pw/transportation/construction/environmental-assessment/cawthra-road.asp>

This Notice first issued on November 14, 2019

The Region of Peel is committed to ensure that all Regional services, programs and facilities are inclusive and accessible for persons with disabilities. Please contact the Project Manager if you need any disability accommodation to participate in the study.

Information will be collected in accordance with the Municipal Freedom of Information and Protection of Privacy Act. With the exception of personal information, all comments will become part of the public record.

MISSISSAUGA

# 2020 budget

## Budget Committee meetings: November 18-19 and 25-27

[mississauga.ca/budget](http://mississauga.ca/budget)



# Public Notice



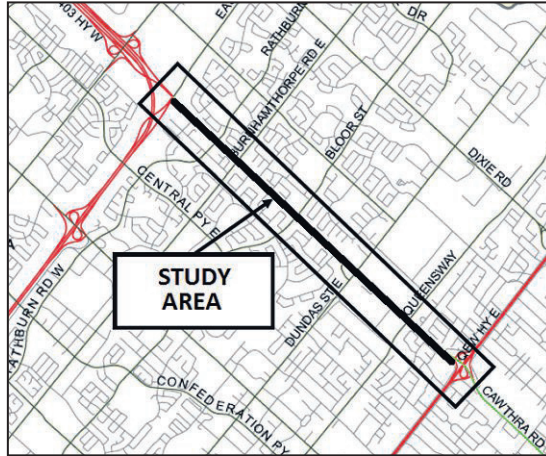
## NOTICE OF PUBLIC INFORMATION CENTRE CAWTHRA ROAD FROM QUEEN ELIZABETH WAY (QEW) TO EASTGATE PARKWAY, MISSISSAUGA MUNICIPAL CLASS ENVIRONMENTAL ASSESSMENT STUDY

### The Study

The Region of Peel is conducting a Class Environmental Assessment (Class EA) Study for Cawthra Road from QEW to Eastgate Parkway in the City of Mississauga (see map). The study is examining the needs and opportunities for transportation improvements within the Cawthra Road corridor to:

- Better serve the needs of all road users,
- Maximize the use and capacity of the road right-of-way, and
- Improve operations and safety for all road users.

A feasibility study was completed in 2014 that concluded that a widening of Cawthra Road from QEW to Eastgate Parkway is not warranted. Recommendations include maintaining the existing four lane cross-section (with centre turn-lane in some sections) with intersection improvements, and exploring opportunities to enhance active transportation by providing on-road bicycle and/or boulevard multi-use facilities. The Class EA Study will build upon the findings of the feasibility study.



### The Process

This Study is being conducted in compliance with Schedule 'B' of the Municipal Class Environmental Assessment, which is a process approved under the Ontario Environmental Assessment Act.

### Public Consultation

Public consultation is an important part of the Study. You are invited to attend the Public Information Centre (PIC) for this Study to review the project and discuss your comments with the Project Team. The PIC will present the identified problems and opportunities within the Study corridor and an evaluation of alternative solutions with environmental considerations. A preliminary preferred solution will also be presented.

**Public Information Centre**  
**Wednesday, November 27, 2019 – 7 p.m. to 9 p.m.**  
Burnhamthorpe Community Centre (Fleetwood Village Room)  
1500 Gulleden Drive, Mississauga, ON L4X 2T7

If you have any questions or comments on the Study or cannot attend the PIC, please contact the Project Manager or visit the project website to view the PIC information and fill out an on-line comment form by **December 13, 2019**:

Sonya Bubas, MCIP, RPP  
Project Manager  
Region of Peel  
10 Peel Centre Drive, Suite B, 4th Floor  
Brampton, ON L6T 4B9  
Tel: 905-791-7800 ext. 7801  
Fax: 905-791-1442  
Email: [sonya.bubas@peelregion.ca](mailto:sonya.bubas@peelregion.ca)

Website: <http://www.peelregion.ca/pw/transportation/construction/environmental-assessment/cawthra-road.asp>

**This Notice first issued on November 14, 2019**

The Region of Peel is committed to ensure that all Regional services, programs and facilities are inclusive and accessible for persons with disabilities. Please contact the Project Manager if you need any disability accommodation to participate in the study.

Information will be collected in accordance with the Municipal Freedom of Information and Protection of Privacy Act. With the exception of personal information, all comments will become part of the public record.

## NEWS

# CCTV CAMERAS ALONG HIGHWAYS 403 AND 410 COULD HELP POLICE, SAYS CHIEF

IAIN COLPITTS  
[icolpitts@mississauga.net](mailto:icolpitts@mississauga.net)

Peel Regional Police Chief Nishan Duraiappah has echoed Brampton Mayor Patrick Brown's support of installing closed-circuit TV (CCTV) cameras to help fight violent crime and gang activity across Peel.

Shortly after a shooting on Highway 410 in Mississauga that killed 28-year-old Giovanni Delahaye in October, Brown tabled a motion at a Peel Police Service Board meeting to push the Ontario government to approve and fund the installation of CCTV cameras along and around highways 410 and 403 in Brampton and Mississau-

ga.

During a Nov. 12 news conference announcing updates in the 2018 murder of Jason Ramkishun, Duraiappah was asked about Brown's motion and said the cameras could be of great help to police.

"Many of our investigations are resolved through the ability for us to take video. That can come from a private commercial property, a person's residence, gas station," Duraiappah said. "It has always been my opinion I would welcome additional opportunities to take video. None of my investigators would say (anything) to the contrary."

Ramkishun, a 23-year-old Brampton man, was

shot to death in a case of mistaken identity along Highway 410 near Courtneypark Drive in Mississauga on Nov. 13, 2018. It was the first of four shootings along the highway over the past year.

"Being a Safe City is a core priority for our City Council and we will continue to focus on providing the necessary resources to keep Brampton a safe city to live, work and play," Brown said in a statement expressing his desire for CCTV cameras along the highway.

During a Brampton Board of Trade event on Tuesday, Nov. 12, Ontario Minister of Transportation Caroline Mulroney announced the addition of six new cameras to add to the six already installed on the 410. However, those cameras will be used as traffic monitoring tools instead of assets in helping police combat crime. During her conference, Mulroney explained the contract for the new cameras was already handed out before Brown's request.

- With files from  
Graeme Frisque

## NO CHARGES FOR POLICE FOLLOWING FORCEFUL ARREST: SIU

### SIU CALLED TO INVESTIGATE ARREST OF MAN FOLLOWING DOMESTIC INCIDENT

ALI RAZA  
[aliraza@metroland.com](mailto:aliraza@metroland.com)

There will be no charges for any Peel Regional Police officers involved in an altercation in which a Missis-

sauga man was injured last year.

Ontario's Special Investigations Unit, after reviewing a case from Nov. 1, 2018, has concluded there will be no charges for any officers. At the time of the incident, two police officers were called to an apartment on Mississauga Valley Boulevard by a woman who said her husband was inebriated and had "choked" her.

The woman later clarified that she was not physically choked, but he was figuratively "choking" their relationship. Nevertheless, officers went to the home with Peel paramedics to ensure the woman's safety.

Upon arrival, the woman's husband, intoxicated, opened the door and shoved one of the officers. After the shove he raised his fists, which prompted

the officers to deploy a Taser multiple times to subdue the man. Throughout the course of the altercation, the officers and the man began in the hallway leading from the front door and ended in a small bedroom off the hallway.

The man was arrested and transported to a nearby police station before being taken to hospital where he was diagnosed with a broken left orbital bone. The injury prompted Peel police to notify the Special Investigation Unit shortly after.

After a thorough investigation in which the man, the officers and witnesses were questioned, Special Investigation Unit interim director Joseph Martino determined there are no reasonable grounds to lay criminal charges against the two police officers.

**Public Works**

10 Peel Centre Dr.  
Suite B  
Brampton, ON  
L6T 4B9  
tel: 905-791-7800

[peelregion.ca](http://peelregion.ca)

Property Location:

**RE: Notice of Public Information Centre  
Cawthra Road from Queen Elizabeth Way to Eastgate Parkway, Mississauga  
Environmental Assessment Study**

The Region of Peel is conducting an Environmental Assessment (EA) Study for improvements to Cawthra Road from the Queen Elizabeth Way (QEW) to Eastgate Parkway in the City of Mississauga. **We invite you to attend the Public Information Centre (PIC) for this Study to review the project and discuss your comments with the Project Team.**

The PIC will be held on:

**Wednesday, November 27, 2019  
7:00 p.m. – 9:00 p.m.  
Burnhamthorpe Community Centre (Fleetwood Village Room)  
1500 Gulleden Drive, Mississauga, ON L4X 2T7**

Additional details are provided in the attached *Notice of Public Information Centre*.

If you cannot attend the PIC, you can view the PIC information and fill out a comment form on the project website after November 27: <http://www.peelregion.ca/pw/transportation/construction/environmental-assessment/cawthra-road.asp>. A comment sheet is also enclosed for your convenience. Please provide your comments by **December 13, 2019**.

We look forward to seeing you at the PIC. Please do not hesitate to contact me if you have any questions regarding the PIC or comments on the EA Study.

Sincerely,



**Sonya Bubas, MCIP, RPP**  
Project Manager  
Infrastructure Programming and Studies  
Tel.: 905-791-7800 ext. 7801  
Email: [sonya.bubas@peelregion.ca](mailto:sonya.bubas@peelregion.ca)

encl: Notice of Public Information Centre  
Comment Sheet



## NOTICE OF PUBLIC INFORMATION CENTRE

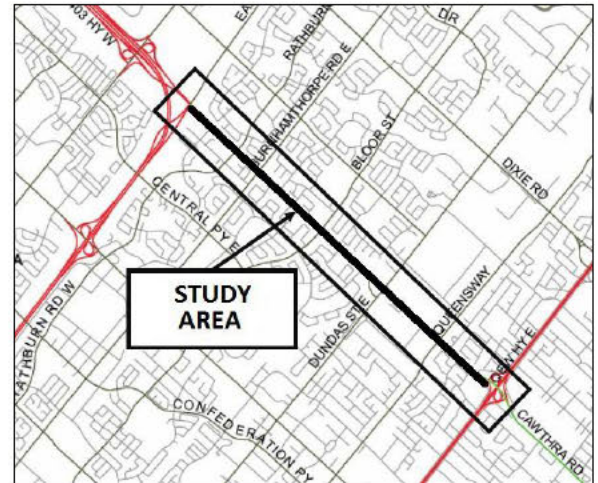
### CAWTHRA ROAD FROM QUEEN ELIZABETH WAY (QEW) TO EASTGATE PARKWAY, MISSISSAUGA MUNICIPAL CLASS ENVIRONMENTAL ASSESSMENT STUDY

#### The Study

The Region of Peel is conducting a Class Environmental Assessment (Class EA) Study for Cawthra Road from QEW to Eastgate Parkway in the City of Mississauga (see map). The study is examining the needs and opportunities for transportation improvements within the Cawthra Road corridor to:

- Better serve the needs of all road users,
- Maximize the use and capacity of the road right-of-way, and
- Improve operations and safety for all road users.

A feasibility study was completed in 2014 that concluded that a widening of Cawthra Road from QEW to Eastgate Parkway is not warranted. Recommendations include maintaining the existing four lane cross-section (with centre turn-lane in some sections) with intersection improvements, and exploring opportunities to enhance active transportation by providing on-road bicycle and/or boulevard multi-use facilities. The Class EA Study will build upon the findings of the feasibility study.



#### The Process

This Study is being conducted in compliance with Schedule 'B' of the Municipal Class Environmental Assessment, which is a process approved under the Ontario Environmental Assessment Act.

#### Public Consultation

Public consultation is an important part of the Study. You are invited to attend the Public Information Centre (PIC) for this Study to review the project and discuss your comments with the Project Team. The PIC will present the identified problems and opportunities within the Study corridor and an evaluation of alternative solutions with environmental considerations. A preliminary preferred solution will also be presented.

**Public Information Centre**  
**Wednesday, November 27, 2019 - 7 p.m. to 9 p.m.**  
Burnhamthorpe Community Centre (Fleetwood Village Room)  
1500 Gulleden Drive, Mississauga, ON L4X 2T7

If you have any questions or comments on the Study or cannot attend the PIC, please contact the Project Manager or visit the project website to view the PIC information and fill out an on-line comment form by **December 13, 2019**:

Sonya Bubas, MCIP, RPP  
Project Manager  
Region of Peel  
10 Peel Centre Drive, Suite B, 4<sup>th</sup> Floor  
Brampton, ON L6T 4B9  
Tel: 905-791-7800 ext. 7801  
Fax: 905-791-1442  
Email: [sonya.bubas@peelregion.ca](mailto:sonya.bubas@peelregion.ca)

Website: <http://www.peelregion.ca/pw/transportation/construction/environmental-assessment/cawthra-road.asp>

This Notice first issued on November 14, 2019

The Region of Peel is committed to ensure that all Regional services, programs and facilities are inclusive and accessible for persons with disabilities. Please contact the Project Manager if you need any disability accommodation to participate in the study.

Information will be collected in accordance with the *Municipal Freedom of Information and Protection of Privacy Act*. With the exception of personal information, all comments will become part of the public record.

**Comment Sheet**

**Cawthra Road from QEW to Eastgate Parkway, Mississauga  
Environmental Assessment**

**Public Information Centre  
Wednesday, November 27, 2019**

**PLEASE PRINT**

Name: \_\_\_\_\_  
Date: \_\_\_\_\_  
E-mail: \_\_\_\_\_  
Number & Street: \_\_\_\_\_  
City: \_\_\_\_\_  
Postal Code: \_\_\_\_\_  
Phone: \_\_\_\_\_

---

---

**Comments:**

\_\_\_\_\_  
\_\_\_\_\_  
\_\_\_\_\_  
\_\_\_\_\_  
\_\_\_\_\_  
\_\_\_\_\_  
\_\_\_\_\_  
\_\_\_\_\_  
\_\_\_\_\_  
\_\_\_\_\_

---

---

Please send your comments by **December 13, 2019** to:

Sonya Bubas, MCIP, RPP  
Project Manager  
Region of Peel  
10 Peel Centre Drive, Suite B, 4th Floor  
Brampton, Ontario L6T 4B9

Phone: 905.791.7800 ext. 7801  
Fax: 905.791.1442  
Email: [sonya.bubas@peelregion.ca](mailto:sonya.bubas@peelregion.ca)

Information will be collected in accordance with the *Municipal Freedom of Information and Protection of Privacy Act*. With the exception of personal information, all comments will become part of the public record.

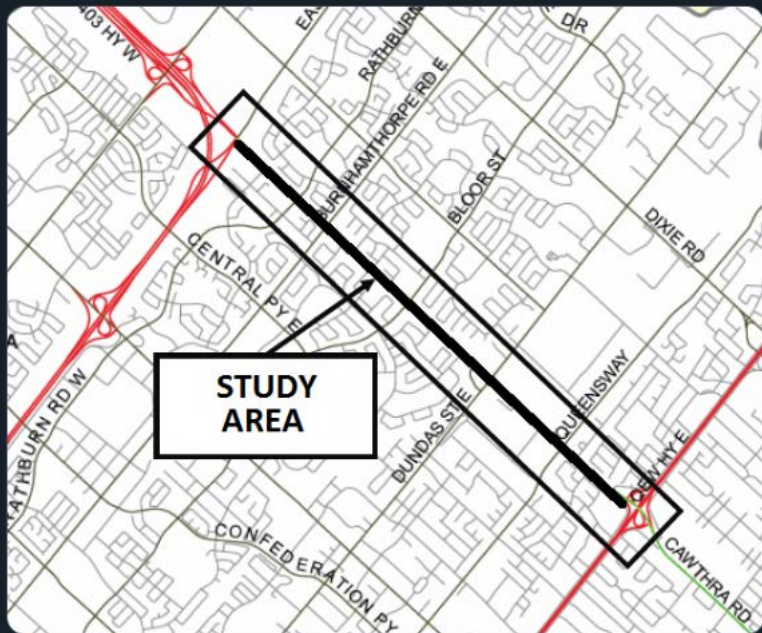




Region of Peel

@regionofpeel

Join us tonight for a Public Information Centre where we will examine the needs and opportunities for transportation improvements within the Cawthra Road corridor. For information: [bddy.me/2L080zn](https://bddy.me/2L080zn)



6:00 AM · Nov 27, 2019 · Salesforce - Social Studio

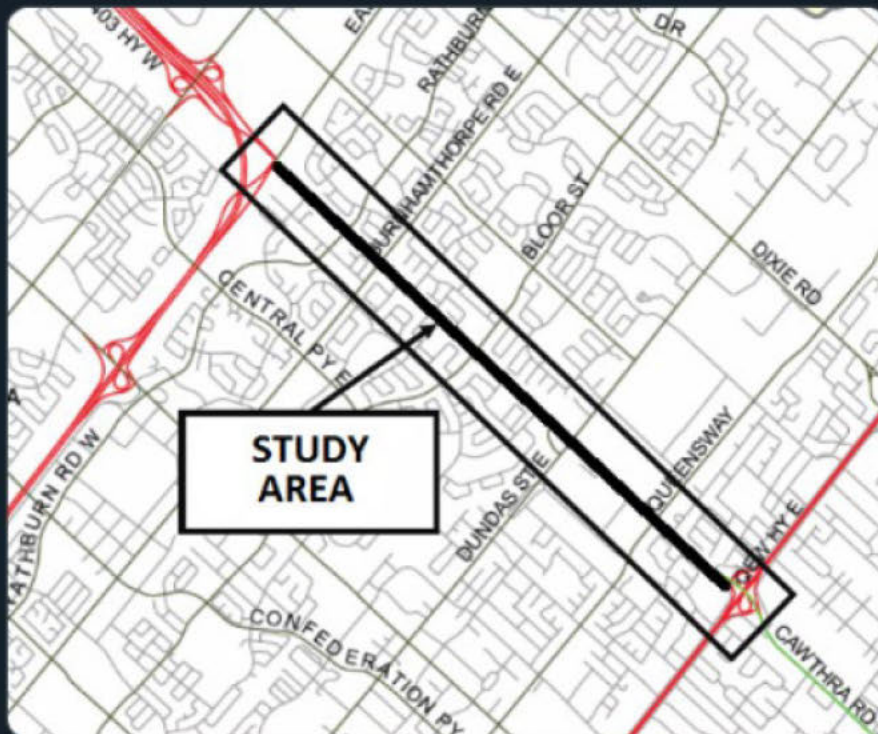
3 Retweets 2 Likes





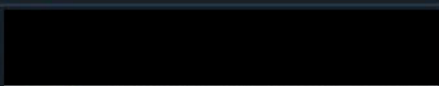
Region of Peel  
@regionofpeel

The Region invites you to join us for a Public Information Centre on Nov 27, where we will examine the needs and opportunities for transportation improvements within the Cawthra Road corridor. For information: [bddy.me/2KUYj5d](https://bddy.me/2KUYj5d)



4:00 PM · Nov 25, 2019 · Salesforce - Social Studio

5 Retweets 1 Like



Just get the never-ending sewer work done, and re-pave it, and Cawthra will be fine.





## NOTICE OF STUDY COMPLETION

### MUNICIPAL CLASS ENVIRONMENTAL ASSESSMENT STUDY CAWTHRA ROAD FROM QUEEN ELIZABETH WAY (QEW) TO EASTGATE PARKWAY, CITY OF MISSISSAUGA

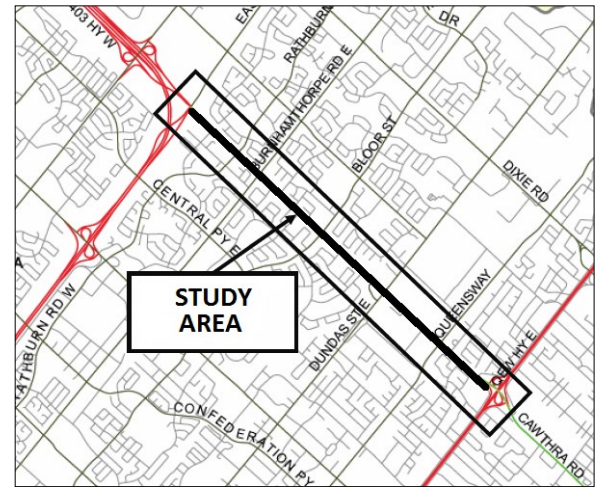
#### The Study

The Region of Peel has completed a Class Environmental Assessment (Class EA) Study for Cawthra Road from QEW to Eastgate Parkway in the City of Mississauga.

The study was conducted according to the requirements for a Schedule B project in the Municipal Engineers Association document titled Municipal Class Environmental Assessment (October 2000, as amended in 2007, 2011 and 2015).

The planned improvements will benefit all transportation modes including cyclists, pedestrians, transit users and motorists and will include:

- Safety and operational improvements to intersections;
- Separated cycle tracks, raised bike lanes and multi-use trails; and
- Separated crossing for cyclists at intersections (known as “crossride”).



#### Study Report Review Period

The Study Report documents the planning, consultation, preliminary design and decision-making process undertaken for the project and will be available for review for 45 calendar days starting Thursday, November 26, 2020 and ending on Monday, January 11, 2021.

The Study Report can be reviewed on the Region’s website at:

<https://peelregion.ca/pw/transportation/construction/environmental-assessment/cawthra-road.asp>

#### Comments

Please provide written comments to the Project Manager listed below within the 45-day review period. If concerns cannot be resolved, you may request that the Minister of the Environment, Conservation and Parks make an Order for a higher level of study (requiring an individual/comprehensive EA approval before proceeding), or that conditions be imposed (such as the requirement of further studies) on the grounds that the requested Order may prevent, mitigate or remedy adverse impacts on constitutionally protected Aboriginal and treaty rights. Any requests should be sent in writing or by email by 4:30 p.m. on Monday, January 11, 2021 to the address provided below and include the requester’s contact information and full name of the Ministry.

#### Minister of the Environment, Conservation and Parks

777 Bay Street, 5<sup>th</sup> Floor, Toronto, Ontario M7A 2J3, or, email at [minister.mecp@ontario.ca](mailto:minister.mecp@ontario.ca), and to

#### Director, Environmental Assessment Branch, Ministry of Environment, Conservation and Parks

135 St. Clair Avenue West, 1<sup>st</sup> Floor, Toronto, Ontario M4V 1P5, or, email at [EABDirector@ontario.ca](mailto:EABDirector@ontario.ca)

A copy of the Order request must also be sent to:

**Sonya Bubas**, MCIP, RPP

Project Manager, Infrastructure Programming and Studies

10 Peel Centre Drive, Suite B, 4<sup>th</sup> Floor

Brampton, ON L6T 4B9

Tel: 905-791-7800 ext. 7801

Email: [sonya.bubas@peelregion.ca](mailto:sonya.bubas@peelregion.ca)

The Region of Peel is committed to ensure that all Regional services, programs and facilities are inclusive and accessible for persons with disabilities. Please contact the Project Manager if you need any disability accommodations to review the study documents.

Information will be collected in accordance with the *Municipal Freedom of Information and Protection of Privacy Act*. With the exception of personal information, all comments will become part of the public record.

### **Construction statement regarding COVID-19**

Critical infrastructure construction is an essential service. We're keeping employees, contractors and the community safe by complying with [provincial guidelines](#), physical distancing, using personal protective equipment, and adjusting work schedules and shifts.

Construction project updates can be found at [peelregion.ca/construction](https://peelregion.ca/construction).

Follow [Peel Public Works on Twitter](#) for service updates and changes.

**This notice was first issued on November 26, 2020**



## **PIC BOARDS AND PRELIMINARY PREFERRED DESIGN**

# Welcome



## Cawthra Road Improvements Queen Elizabeth Way (QEW) to Eastgate Parkway Environmental Assessment (EA)



Public Information Centre (PIC)  
November 27, 2019

*Please sign in...*

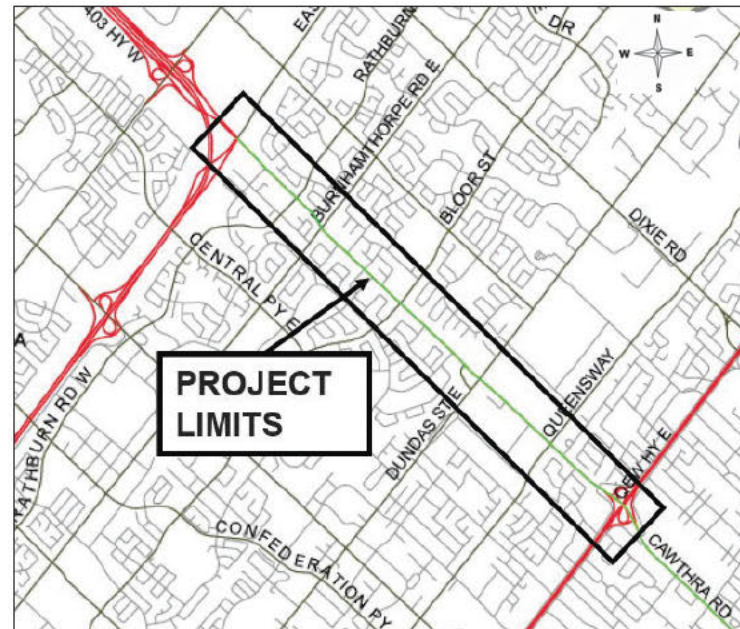


# Study Area

## Cawthra Road from QEW to Eastgate Parkway, Mississauga (approximately 5.1km)

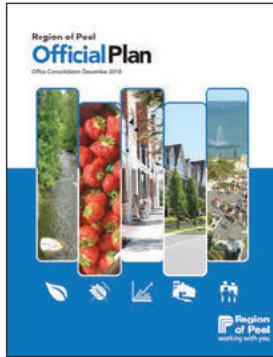


- North-South Minor Regional Road 17
- 4 travel lanes (2 in each direction), plus additional southbound lane from The Queensway to QEW
- 50 km/h posted speed limit
- Goods movement corridor with trucks restricted from 7PM to 7AM
- Grade separated at Canadian Pacific (CP) Rail and Dundas Street crossings with retaining walls
- Interchanges with QEW and Highway 403 under Provincial jurisdiction



- Adjacent residential land use with exception of employment between The Queensway and Dundas Street
- Sidewalks on both sides from QEW to Burnhamthorpe Road
- Multi-use Trail on west side from Burnhamthorpe Road to Eastgate Parkway
- Partial municipal transit route
- Water and wastewater infrastructure
- Hydro, gas, cable, and phone utilities

# Why Improve Cawthra Road?



## (1) Meet goals and objectives for multi-modal transportation design

### Region of Peel Long Range Transportation Plan Update (2019)

- 50% sustainable transportation mode share by 2041 (walk, cycle, transit, carpool)
- Subject to widening from 4 to 6 lanes from QEW to The Queensway

## (2) Maximize use and capacity of road right-of-way

### Region of Peel Road Characterization Study (2013)

- Industrial Connector from QEW to Dundas Street
- Suburban Connector from Dundas Street to Eastgate Parkway

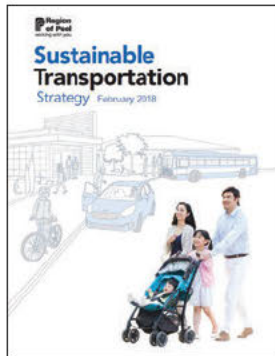
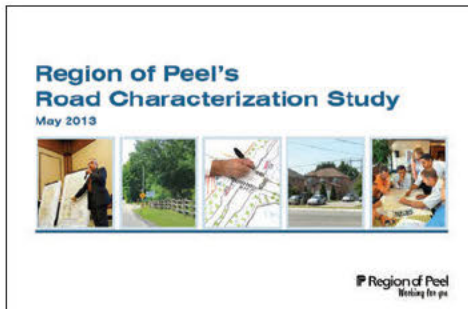
### Peel Goods Movement Strategic Plan (2017-2021)

- Primary Truck Route south of Dundas Street
- Connector Truck Route north of Dundas Street

### Region of Peel Sustainable Transportation Strategy (2018)

- Part of Regional pedestrian and cyclist network
- Active transportation improvements to the corridor

**50%  
sustainable  
transportation  
mode share  
by 2041**



## (3) Improve operations and safety within road corridor for all users

### Region of Peel Cawthra Road Pre-EA Feasibility Study (2015)

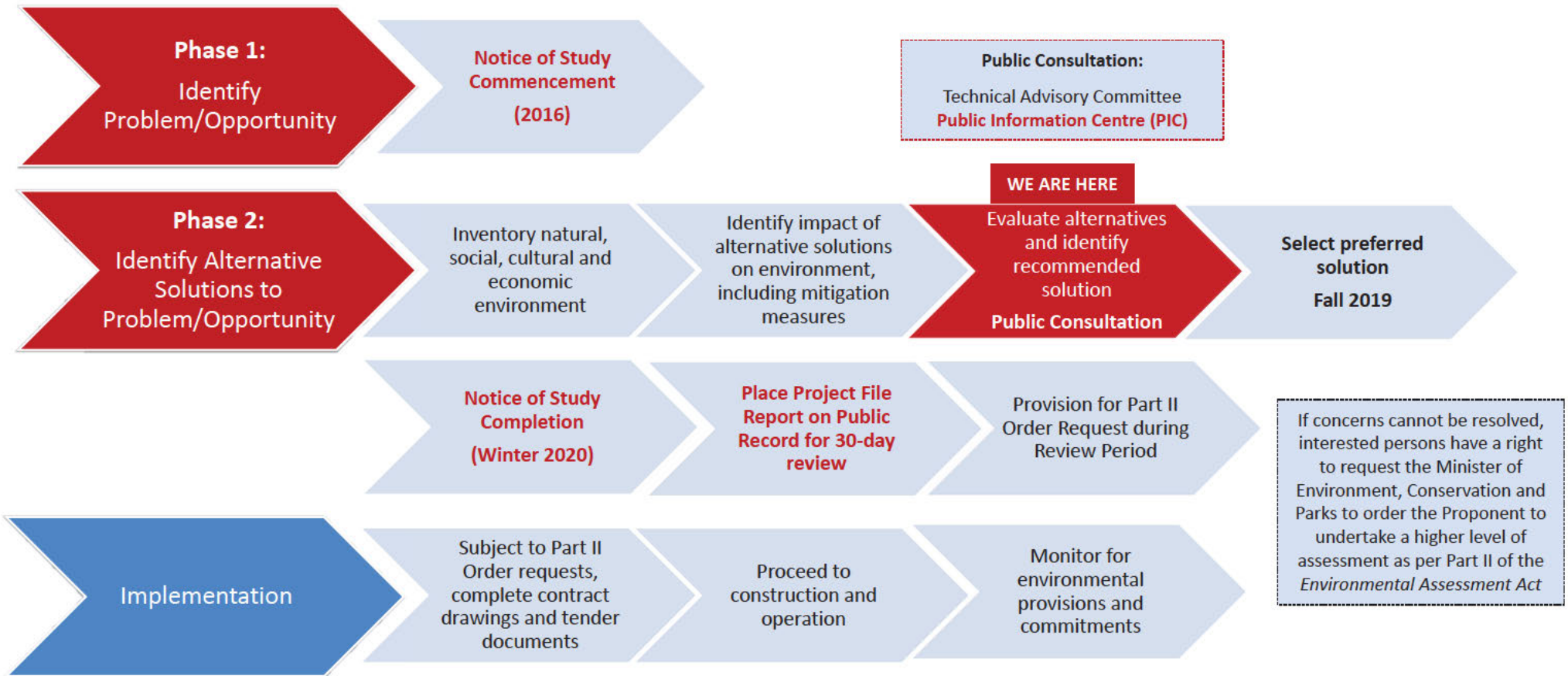
- Shift road alignment to the east adjacent to Mount Peace Cemetery
- Maintain 4 lanes with centre turn-lane in sections and intersection improvements
- Add on-road bicycle and/or boulevard multi-use facilities



# EA Process



This Study follows **Phases 1 and 2** of the **Municipal Class Environmental Assessment for Schedule B projects**



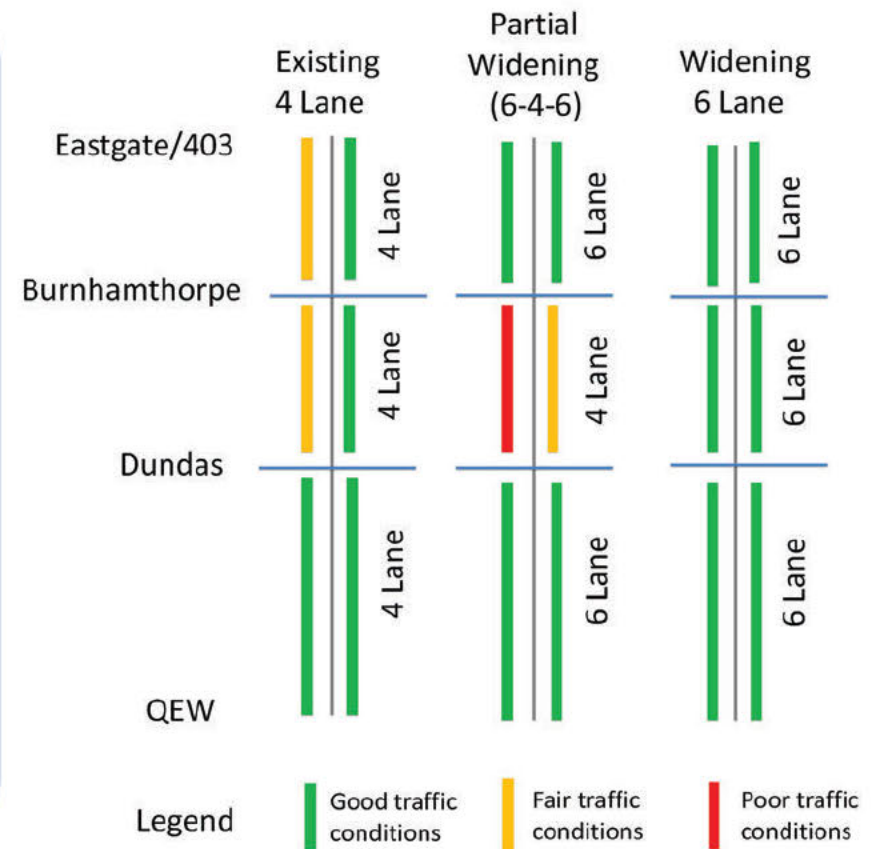
(Municipal Engineers Association, last amended in 2015)

# Traffic Conditions



- Traffic volumes are expected to increase to 2031.
- The current 4 lanes will approach capacity; however operational and safety benefits can be realized through local intersection improvements.
- Partial widening to 6 lanes will increase demands and worsen operations within the central section.
- Widening to 6 lanes throughout will improve traffic operations, however is not feasible within central section due to property constraints.

2031 Traffic Conditions

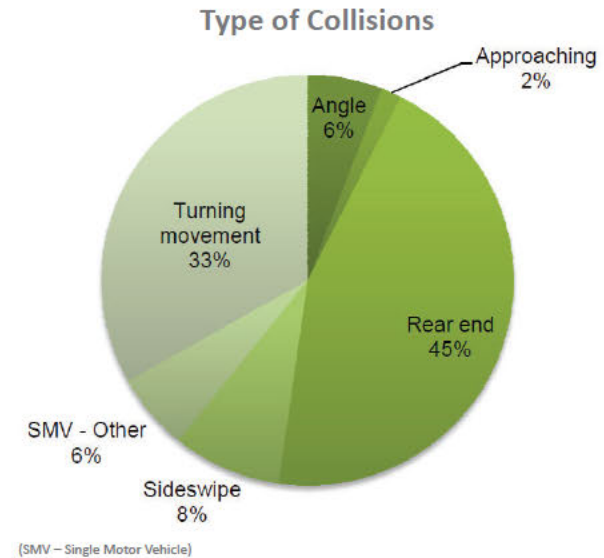




## Future Traffic Conditions at Intersections

By 2031, up to 7 of the 13 signalized intersections within the corridor will experience poor traffic conditions:

- Eastgate Parkway (AM and PM peak),
- Rathburn Road (PM peak),
- Burnhamthorpe Road (AM and PM peak),
- Bloor Street (AM and PM peak),
- The Queensway (PM peak),
- North Service Road (PM peak), and
- South Service Road (AM peak).



## Traffic Safety Considerations

- Excessive speeding (i.e. 20 km/h above the posted speed limit).
- Majority of collisions are rear-end and turning movement type, with the highest number at Eastgate Parkway, Burnhamthorpe Road, Bloor Street, and The Queensway, which could benefit from intersection improvements such as adding dual left and right turn lanes.
- Midblock collisions remain relatively low with the exception of immediately south of Burnhamthorpe Road and north of The Queensway.

# Problem and Opportunity

## Problems

- No cycling facilities other than the multi-use trail between Burnhamthorpe Road and Eastgate Parkway.
- Traffic congestion at major intersections.
- Excessive speeding along the corridor.
- Frequency of collisions associated with left turning conflicts at major intersections and commercial entrances.

## Opportunities

- Provide additional separation from motor vehicle traffic thus increasing comfort of cyclists riding in heavy traffic.
- Improve traffic operations and safety at pedestrian crossings.
- Narrow lane widths to reduce speeds.
- Provide fully protected left turn phasing to address safety concerns, or consider left turn restrictions.

# Alternative Solutions

1

## Do nothing

No improvements to Cawthra Road

2

## Widen road for additional traffic volume

Widen road from 4 to 6 lanes for additional through traffic to accommodate growth

3

## Improve corridor operations & safety

Design corridor to all modes of transportation, including walking, cycling, taking transit, carpooling and driving; and narrow lane widths to reduce speeding

4

## Improve intersection operations & safety

- Remove or replace channelized islands with smart channels or traditional right-turn lanes (see examples)
- Add dual left turns and exclusive right-turn lanes
- Adjust and re-evaluate turning lane storage
- Provide fully protected signal phasing
- Improve pavement markings and signage

Examples  
(Alternative 4):



Channelized Island



Right-Turn Lane

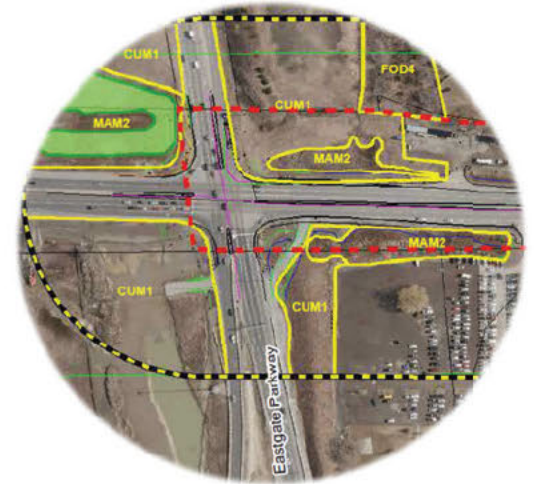


Smart Channel



## Natural Heritage Resources

- Field investigations were conducted in Fall of 2018 and Spring/Summer 2019, including breeding bird and amphibian surveys (failed to detect calling anurans).
- No aquatic features (e.g. watercourses) having potential fish habitat.
- Areas of significance include:
  - Cultural meadow and Common Reed dominated marshes, immediately south of Eastgate Parkway; and
  - Cawthra Woods immediately south of the study area is a regional Area of Natural and Scientific Interest (ANSI) and Provincially Significant Wetland (PSW). Wetlands used by Jefferson Salamander (Endangered Species).
- No impacts are anticipated to Cawthra Woods or PSW.
- No negative impacts to the ecological form and function of marsh lands are anticipated.



Existing Cultural Meadows / Marshes



# Tree Inventory and Protection



## Tree Inventory and Protection Plan

- Tree inventory and health assessment was completed in October 2018; including all trees 10 cm diameter at breast height (DBH) or greater within the existing right-of-way.
- 330 trees were assessed.
- 31 tree species identified, Norway Maple was the most abundant.
- Identified 106 trees within 10m of limit of disturbance, of which 58 expected to require removal. Of the 58 trees to be removed, 14 are on the west side of Cawthra Road and 44 are on the east side.
- In keeping with Mississauga Tree Protection By-law, a minimum of 60 replacement trees are to be provided. Replacement trees are to be same species except for non-native trees.



Existing Boulevard Trees







## Archaeological Assessment

- Stage 1 Archaeological Assessment undertaken in Fall 2018.
- Corridor retains no or low archaeological potential due to previous extensive disturbance, with the exception of the strip of land immediately north of the Dixie Union Cemetery.
- Although not anticipated at this time, should underground works encroach within 10 metres of the Dixie Union Cemetery, a Stage 3 investigation will be required.

## Cultural Heritage Assessment

Four (4) properties within the study area are recognized as cultural heritage resources on the City of Mississauga Heritage Register:

- Dixie Presbyterian Church
- St. Mary's Ukrainian Catholic Church
- Dixie Union Cemetery and Chapel
- Mount Pleasant Cemetery

Two additional municipally designated properties, adjacent to the study corridor include: Cawthra Estate and Cherry Hill.

None of the above properties will be directly impacted by the proposed improvements.

One residential property at 3317 Cawthra Road is expected to be directly impacted and is identified to have some heritage value or interest, however it is not recognized as heritage property by the City.



# Designated Land Use

**City of Mississauga  
Official Plan (2018)**

**Region of Peel  
Official Plan (2018)**



**LAND USE DESIGNATIONS**

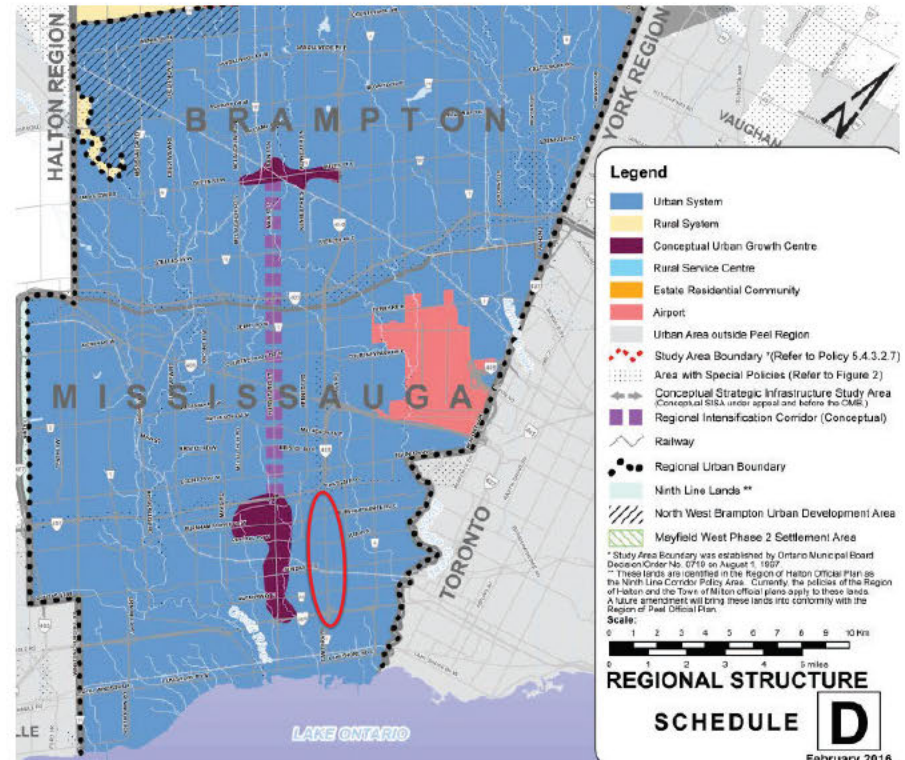
- |                            |                       |
|----------------------------|-----------------------|
| Residential Low Density I  | Airport               |
| Residential Low Density II | Institutional         |
| Residential Medium Density | Public Open Space     |
| Residential High Density   | Private Open Space    |
| Mixed Use                  | Greenlands            |
| Convenience Commercial     | Parkway Belt West     |
| Motor Vehicle Commercial   | Utility               |
| Office                     | Special Waterfront    |
| Business Employment        | Partial Approval Area |
| Industrial                 |                       |

**BASE MAP INFORMATION**

- |   |                              |
|---|------------------------------|
| Heritage Conservation District                            | Civic Centre (City Hall)     |
| 1986 NEP/2000 NEP Composite Noise Contours                | City Centre/Transit Terminal |
| LBPIA Operating Area Boundary See Aircraft Noise Policies | GO Rail Transit Station      |
| Area Exempt from LBPIA Operating Area                     | Public School                |
| Natural Hazards   | Catholic School              |
|   | Hospital                     |
|   | Community Facilities         |

**City Structure**

- |                |                     |
|----------------|---------------------|
| Downtown       | Corporate Centre    |
| Major Node     | Employment Area     |
| Community Node | Social Purpose Area |
| Neighbourhood  |                     |



**Legend**

- |   |
|---|
| Urban System  |
| Rural System  |
| Conceptual Urban Growth Centre  |
| Rural Service Centre  |
| Estate Residential Community  |
| Airport   |
| Urban Area outside Peel Region  |
| Study Area Boundary (Refer to Policy 5.4.3.2.7)   |
| Area with Special Policies (Refer to Figure 2)  |
| Conceptual Strategic Infrastructure Study Area (Conceptual SISA, under appeal and before the CME) |
| Regional Intensification Corridor (Conceptual)  |
| Railway   |
| Regional Urban Boundary   |
| Ninth Line Lands **   |
| North West Brampton Urban Development Area  |
| Mayfield West Phase 2 Settlement Area   |
- \* Study Area Boundary was established by Ontario Municipal Board Decision Order No. C716 on August 1, 1997.  
\*\* These lands are identified in the Region of Halton Official Plan as the Ninth Line Corridor Priority Area. Currently, the policies of the Region of Halton and the Town of Milton Official Plans apply to these lands. A future agreement will bring these lands into conformity with the Region of Peel Official Plan.
- Scale:  
0 1 2 3 4 5 6 7 8 9 10 Miles  
0 1 2 3 4 5 Miles

**REGIONAL STRUCTURE**

**SCHEDULE D**

February 2016

## Inventory of existing noise walls and fences:

- Approximately 820 m of private noise walls;
- Approximately 1,840 m of Regional noise walls;
- Approximately 160 m of privacy fences (not considered to effectively reduce noise)



Existing Noise Walls

## Noise Mitigation Requirements

Based on the Region of Peel Noise Attenuation Policy W30-04 and noise analysis completed as part of this study, it is recommended that noise walls be provided at the limits of the Cawthra Road right-of-way for those residential properties backing onto Cawthra Road within the study area (location to be verified as part of detail design).



# Soil and Pavement Condition



## Contamination Site Screening

- Contamination Overview Study (COS) completed along the corridor identified 20 potential contaminating activities (PCAs) associated with adjacent commercial and industrial operations within the study area.
- Environmental Site Assessments including soil and ground water investigations are to be undertaken during detailed design, where required to investigate the potential impacts caused by surrounding land uses identified as high risk.



## Pavement Condition

- Generally the existing pavement is in good condition, however shows some signs of deterioration (i.e. spalling and cracking).
- From QEW to north of Dundas Street, remove and repave existing asphalt.
- North of Dundas Street, replace full depth asphalt (to be confirmed during detailed design).

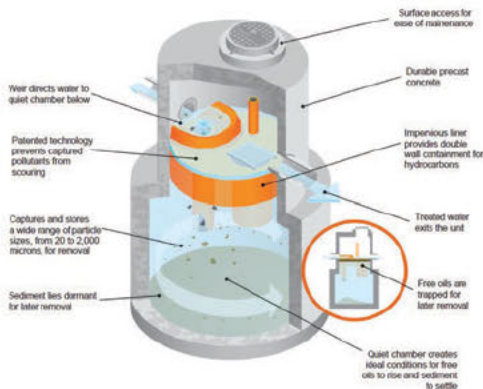


## Existing Conditions

- Existing drainage infrastructure consists of roadside curbs, stormwater drains and sewers, with limited ditching present at the north end of the project.
- No watercourse crossings exist within the study area.
- All outlets within the study area discharge into existing municipal storm sewers which convey runoff westerly, ultimately discharging into Cooksville Creek.
- Several sections of the existing storm sewer are deficient in capacity and require replacement and upsizing, in addition to sections requiring replacement due to structural deficiencies (identified through a Closed Circuit Television (CCTV) inspection).

## Proposed Conditions

- Existing drainage patterns will be maintained.
- Water quantity control will be implemented (i.e. low impact development techniques such as permeable paving on walkways and cycle tracks, and/or infiltration chambers).
- Water quality treatment will be provided using Oil/Grit Separator (OGS) units, underground infiltration chambers, and existing roadside ditches.
- Existing storm sewers that are in poor condition will be replaced.



Oil/Grit Separator (OGS)

# Evaluation Criteria

Criteria	Indicator
<b>Transportation</b>	<p>Ability to address problem and opportunity</p> <p>Consistent with municipal planning policies and plans (Peel and Mississauga Official Plans, Long Range Transportation Plans (LRTPs), and Active Transportation Plans)</p>
<b>Natural Environment</b>	<p>Potential impact on natural heritage features</p> <p>Potential opportunity to adapt to or mitigate effects of climate change (Reduce Greenhouse Gas (GHG) emissions, Incorporate Low Impact Development (LID) in stormwater management)</p>
<b>Social Environment</b>	<p>Compatible with existing and planned future land uses, including property impact</p> <p>Promotes healthy, age-friendly and accessible environments</p> <p>Potential noise impacts</p>
<b>Cultural Environment</b>	<p>Potential impact on built heritage and cultural heritage landscapes</p> <p>Potential impact on archaeological resources</p>
<b>Economic Environment</b>	<p>Consistent with Region of Peel Goods Movement Strategic Network</p> <p>Supports economic sustainability, including access to businesses</p> <p>Anticipated cost within financing capacity of the Region of Peel</p>
<b>Engineering Environment</b>	<p>Potential impact on drainage and stormwater management</p> <p>Potential impact on soils and pavement structure</p> <p>Potential impact on utilities and municipal water/wastewater infrastructure</p>



# Assessment of Alternative Solutions

Environmental Criteria / Indicator	(1) Do Nothing	(2) Widen road for additional lanes	(3) Improve corridor operations & safety	(4) Improve intersection operations & safety
<b>Transportation</b>				
Ability to address problem and opportunity	- Does not address problem and opportunity	+ Does address problem and opportunity in combination with other alternatives, however introduces constraints on the ability to accommodate active transportation facilities	+ Does address problem and opportunity in combination with other alternatives	+ Does address problem and opportunity in combination with other alternatives
Consistent with municipal planning policies and plans	- No action to meet goals and objectives of municipal planning policies and plans	+ Partially consistent with Regional LRTP Update (2019) which shows widening to 6 lanes between QEW and The Queensway by 2041	+ Consistent in combination with other alternatives	+ Consistent in combination with other alternatives
<b>Engineering</b>				
Potential impact on drainage and stormwater management	+ No impact	- Greatest impact of alternatives (relative to Do Nothing) due to introduction of largest impervious area	- Moderate impact in comparison to widening alternative (relative to Do Nothing) due to reduction of impervious area	- Moderate impact in comparison to widening alternative (relative to Do Nothing) due to reduction of impervious area
Potential impact on soils and pavement structure	+ No impact	- Greatest impact of alternatives (relative to Do Nothing) due to largest area of land required and potential for encroaching into areas of potential environmental concern	- Moderate impact in comparison to widening alternative (relative to Do Nothing) due to less land required and potential for encroaching into areas of potential environmental concern	- Moderate impact in comparison to widening alternative (relative to Do Nothing) due to less land required and potential for encroaching into areas of potential environmental concern
Potential impact on utilities and municipal water/wastewater infrastructure	+ No impact	- Greatest potential for displacement/relocation of utilities and municipal infrastructure of alternatives (relative to Do Nothing)	- Moderate potential for displacement/relocation of utilities and municipal infrastructure of widening alternative (relative to Do Nothing)	- Moderate potential for displacement/relocation of utilities and municipal infrastructure of widening alternative (relative to Do Nothing)



# Assessment of Alternative Solutions

Environmental Criteria / Indicator	(1) Do Nothing	(2) Widen road for additional lanes	(3) Improve corridor operations & safety	(4) Improve intersection operations & safety
<b>Natural</b>				
Potential impact on natural heritage features	+ No impact	- Greatest encroachment potential of alternatives (relative to Do Nothing) with impact throughout entire corridor	- Moderate encroachment potential in comparison to widening alternative (relative to Do Nothing) with impact throughout entire corridor	+ Least encroachment potential of alternatives (relative to Do Nothing) as impact is limited to intersections
Potential opportunity to adapt to or mitigate effects of climate change	- No action to address effects of climate change	+ Opportunity for LID - Increased GHG emissions from increased traffic	+ Opportunity for LID throughout corridor + Opportunity to ultimately reduce GHG emissions with a shift from single-occupancy vehicles to sustainable modes of travel	+ Opportunity for LID at intersections
<b>Cultural</b>				
Potential impact on built heritage and cultural heritage landscapes	+ No impact	- Greatest impact of alternatives (relative to Do Nothing) due to area of land required	- Moderate impact in comparison to widening alternative (relative to Do Nothing) due to land required to accommodate active transportation and/or transition to pedestrian/cyclist crossings at intersections	- Moderate impact in comparison to widening alternative (relative to Do Nothing) due to potential land required to accommodate additional turn lanes and/or to improve pedestrian/cyclist movements - 1 property affected at Bloor Street to accommodate northbound right turn lane was identified in Cultural Heritage Assessment to have potential heritage value
Potential impact on archaeological resources	+ No impact	- Greatest impact of alternatives (relative to Do Nothing) due to area of land required - Requires additional archaeological assessments to determine extent of impacts and mitigation for areas outside the right-of-way	+ No significant impact in comparison to widening alternative (relative to Do Nothing) due to less area of land required - Stage 3 archaeological assessment will be undertaken during detailed design to confirm mitigation if underground work extends within 10 m of the Dixie Cemetery	+ No significant impact in comparison to widening alternative (relative to Do Nothing) due to less area of land required

# Assessment of Alternative Solutions

Environmental Criteria / Indicator	(1) Do Nothing	(2) Widen road for additional lanes	(3) Improve corridor operations & safety	(4) Improve intersection operations & safety
<b>Social</b>				
Compatible with existing and planned future land uses, including property impact	+ No impact to land uses and property	- Greatest potential for property requirements of alternatives (relative to Do Nothing) due to widening throughout corridor	- Moderate potential for property requirements of alternatives (relative to Do Nothing), to accommodate active transportation throughout corridor and/or transition to pedestrian/cyclist crossings at intersections - 1 property affected south of The Queensway due to driveway grading	- Moderate potential for property requirements of alternatives (relative to Do Nothing), to accommodate additional turn lanes and/or improve pedestrian/cyclist movements at intersections - 2 properties affected at Bloor Street to accommodate northbound right turn lane
Promotes healthy, age-friendly and accessible environments	- No opportunity to address effects on public health	+ Supports active transportation - Wider road crossings for users with limited mobility - Proximity of pedestrians/cyclists to traffic emissions - Increased air emissions due to increased traffic	+ Supports active transportation infrastructure - Proximity of pedestrians/cyclists to traffic emissions	+ Supports improvements for the safety of pedestrians/cyclists crossing at intersections
Potential noise impacts	+ No impact	- Greatest impact of alternatives (relative to Do Nothing) due to increased traffic closer to sensitive land uses	+ Negligible noise impact (relative to Do Nothing)	+ Negligible noise impact (relative to Do Nothing)



# Assessment of Alternative Solutions

Environmental Criteria / Indicator	(1) Do Nothing	(2) Widen road for additional lanes	(3) Improve corridor operations & safety	(4) Improve intersection operations & safety
<b>Economic</b>				
Consistent with Region of Peel Goods Movement Strategic Network	+ No impact	+ Maintains truck restriction from 7PM to 7AM	+ Maintains truck restriction from 7PM to 7AM	+ Maintains truck restriction from 7PM to 7AM + Ability for trucks to turn will be maintained
Supports economic sustainability, including access to businesses	+ No impact	+ Increased traffic exposed to business area	+ Provides enhanced accessibility for variety of sustainable transportation users which could provide more exposure for businesses	- Access to 2 commercial properties restricted to right-in and right-out
Anticipated cost within financing capacity of the Region of Peel	+ No construction cost	- Greatest cost of alternatives (relative to Do Nothing) due to greatest extent of new infrastructure to construct and maintain, including costs associated with complexity, utility relocation and property impact	- Moderate cost in comparison to widening alternative (relative to Do Nothing) due to less extent of new infrastructure to construct and maintain	- Moderate cost in comparison to widening alternative (relative to Do Nothing) due to less extent of new infrastructure to construct and maintain

## Summary of Evaluation

Environmental Criteria / Indicator	(1) Do Nothing	(2) Widen road for additional lanes	(3) Improve corridor operations & safety	(4) Improve intersection operations & safety
<b>Summary</b>	- Does not address problem and opportunity	- Not expected to provide significant benefit	+ Carried forward	+ Carried forward
<b>Recommendation</b>	Alternative 1 and 2 are not preferred		Combination of Alternative 3 and 4 is preferred	

**Phase 2: Alternative Solutions**

# Preliminary Preferred Solution

## Reconstruct roadway to:

- Maintain 4 lanes (5 lanes south of The Queensway)
- Provide centre-turn lane or median
- Provide cycle tracks or raised bike lanes
- Support provisions for transit (bus) services

## Improve operations and safety at intersections by:

- Removing or replacing channelized islands with smart channels or traditional right-turn lanes
- Installing cross-rides
- Adding dual left turns and exclusive right-turn lanes
- Extending or eliminating turning lane storage
- Providing fully protected signal phasing
- Improving pavement markings and signage

### Smart Channels

- Improves visibility of oncoming vehicles and pedestrians for drivers turning right.



Channelized Island



Smart Island

(Drivers do not have to turn their head as much to the left as they would at a traditional channel).

- Encourages vehicles to slow down at the channel since the vehicle would have to make a sharper turn.

### Cross-Rides

- At traditional cross-walks, cyclists dismount and cross the intersection by walking their bike.
- A cross-ride allows cyclists to ride their bike within the crossing without dismounting.
- A separate cross-ride provides separate space for cyclists and pedestrians.

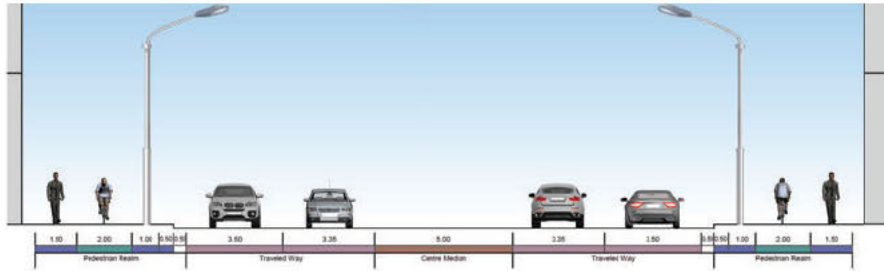


**Phase 2: Alternative Solutions**



# Typical Cross-Sections

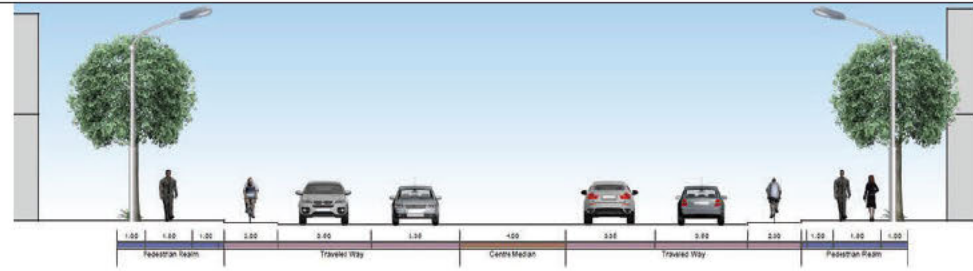
## Reconstruct to accommodate cycle tracks in non-constrained areas



Set back significantly from the roadway

- Requires more boulevard width than raised bike lanes
- + Improves comfort for cyclists
- Frequent driveway entrances may cause bumpy cycling experience

## Reconstruct to accommodate raised bike lanes in constrained areas



Adjacent to vehicular lanes and vertically separated from motor vehicle traffic

- Not as much horizontal and vertical separation compared to cycle tracks
- May not be comfortable along roadways with speeds greater than 50 km/hr
- + Drivers exiting or entering the driveway have better visibility of cyclists

- Cost prohibitive to widen QEW bridge structure between South Service Road and North Service Road
- + Multi-use trail was recently constructed on the west side from Burnhamthorpe Road to Eastgate Parkway

**Most Preferred**



**Preferred where Cycle Tracks are not feasible**



# Preliminary Preferred Design Plan



**See Preliminary Preferred Design Plan  
for location of proposed improvements**



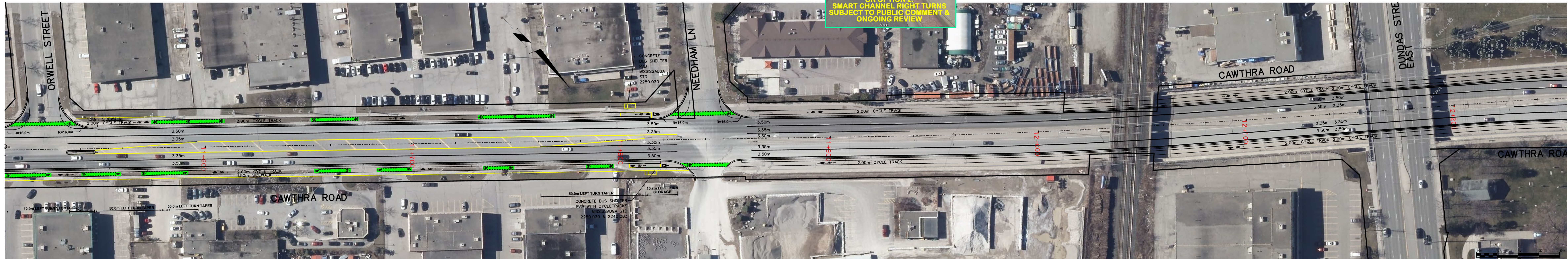
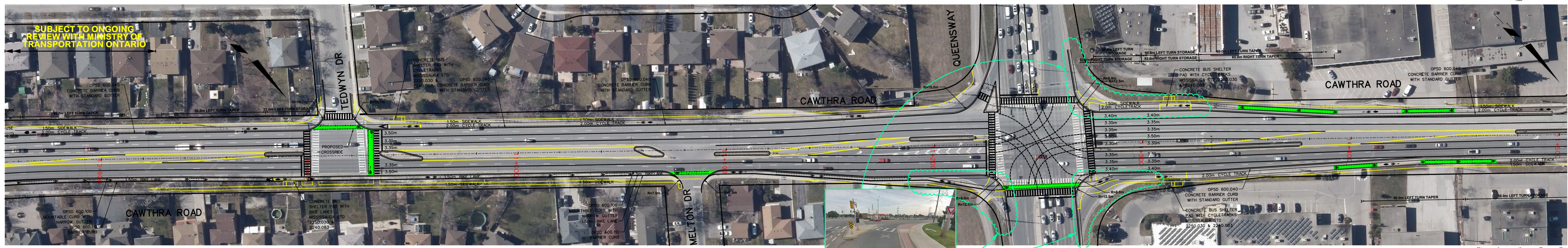
## Next Steps



- Please fill out a comment sheet and mail, email or fax your comments to the contact shown by **December 13, 2019**
- Following this PIC, the project team will:
  - Review public comments
  - Confirm a preferred solution and design
  - Prepare project file report for 30-day public review (Winter 2020)

***Thank you***













\*LANDSCAPE PLAN WILL BE DEVELOPED AS PART OF THE EA STUDY



EXAMPLE: CROSS RIDE @ DOVENCOURT AVE. AND CHURCHILL AVE. (OTTAWA)

CROSSRIDES ARE PROVIDED TO ALLOW CYCLISTS TO RIDE THEIR BICYCLE WITHIN THE CROSSING WITHOUT DISMOUNTING



EXAMPLE: CYCLETRACK @ CHURCHILL AVE. (OTTAWA)

PRELIMINARY PREFERRED CYCLING INFRASTRUCTURE FOR THE CORRIDOR WITH SEPARATION



EXAMPLE: RAISED BIKE LANE @ CULLY BLVD (WATERLOO)

CYCLING INFRASTRUCTURE FOR AREAS OF THE CORRIDOR THAT ARE CONSTRAINED WITH FREQUENT DRIVEWAY ENTRANCES TO REDUCE BUMPY CYCLING EXPERIENCE



**PIC COMMENT SHEETS AND RESPONSES**



**From:** [REDACTED]  
**Sent:** November 29, 2019 3:31 PM  
**To:** Bubas, Sonya <[sonya.bubas@peelregion.ca](mailto:sonya.bubas@peelregion.ca)>; Zois, Anthony <[anthony.zois@peelregion.ca](mailto:anthony.zois@peelregion.ca)>  
**Cc:** [REDACTED]  
**Subject:** Environment Assessment Cawthra Rd.

**CAUTION: EXTERNAL MAIL. DO NOT CLICK ON LINKS OR OPEN ATTACHMENTS YOU DO NOT TRUST.**

Hello Sonya

I have attached my comment sheet in regards to how the proposed changes will negatively affect our business.

We would request an alternative solution be designed and are prepared to work along with you in this regard.

Please advise how we can move forward to achieve this.

Kind Regards

[REDACTED]



Comment Sheet

**Cawthra Road from QEW to Eastgate Parkway, Mississauga  
Environmental Assessment**

**Public Information Centre  
Wednesday, November 27, 2019**

**PLEASE PRINT**

Name: \_\_\_\_\_

Date: \_\_\_\_\_

E-mail: \_\_\_\_\_

Number & Street: \_\_\_\_\_

City: \_\_\_\_\_

Postal Code: \_\_\_\_\_

Phone: \_\_\_\_\_

**Comments:**

Hello Sonya  
As discussed on Wednesday night, it is critical  
to the future of our business that we do not  
lose full access on Cawthra Rd.  
We believe there is a solution to make the  
traffic turning safer and request a meeting  
to discuss this further.  
I look forward to hearing from you  
Best Regard

Please send your comments by **December 13, 2019** to:

Sonya Bubas, MCIP, RPP  
Project Manager  
Region of Peel  
10 Peel Centre Drive, Suite B, 4th Floor  
Brampton, Ontario L6T 4B9

Phone: 905.791.7800 ext. 7801  
Fax: 905.791.1442  
Email: [sonya.bubas@peelregion.ca](mailto:sonya.bubas@peelregion.ca)

Information will be collected in accordance with the *Municipal Freedom of Information and Protection of Privacy Act*. With the exception of personal information, all comments will become part of the public record.



On Fri, Jan 17, 2020 at 11:25 AM Saddi, Asha <[asha.saddi@peelregion.ca](mailto:asha.saddi@peelregion.ca)> wrote:

Hello [REDACTED]

Thank you for providing your comments for the Cawthra Road EA Public Information Centre. The project team will consider these comments and get back to you. In the meantime, if you have any other comments or questions please do not hesitate to contact me.

Regards,

*Asha Saddi, BA(Hons), PMP  
Technical Analyst, Infrastructure Programming & Studies  
Transportation Division  
Public Works, Region of Peel  
Tel: 905-791-7800 x7794  
Fax: 905-791-1442  
[Asha.Saddi@peelregion.ca](mailto:Asha.Saddi@peelregion.ca)*

**From:** Saddi, Asha

**Sent:** March 20, 2020 8:01 AM

**To:** [REDACTED]

**Cc:** Bubas, Sonya <[sonya.bubas@peelregion.ca](mailto:sonya.bubas@peelregion.ca)>; Maraj, Kelly <[AshwantieKelly.Maraj@peelregion.ca](mailto:AshwantieKelly.Maraj@peelregion.ca)>

**Subject:** RE: Cawthra Road Environmental Assessment

Good Morning [REDACTED]

Thank you for getting back. You'll receive a meeting invite for May 12<sup>th</sup> from Kelly Maraj today and you'll be able to confirm your acceptance of the meeting by clicking on the "accept" at the top of the meeting invite.

We look forward to meeting with you on May 12<sup>th</sup>.

Regards,

*Asha Saddi, BA(Hons), PMP  
Technical Analyst, Infrastructure Programming & Studies  
Transportation Division  
Public Works, Region of Peel  
Tel: 905-791-7800 x7794  
Fax: 905-791-1442  
[Asha.Saddi@peelregion.ca](mailto:Asha.Saddi@peelregion.ca)*

**From:** [REDACTED]

**Sent:** January 20, 2020 9:26 AM

**To:** Saddi, Asha <[asha.saddi@peelregion.ca](mailto:asha.saddi@peelregion.ca)>

**Cc:** Bubas, Sonya <[sonya.bubas@peelregion.ca](mailto:sonya.bubas@peelregion.ca)>

**Subject:** Re: Cawthra Road Environmental Assessment (EA) Comments



**CAUTION: EXTERNAL MAIL. DO NOT CLICK ON LINKS OR OPEN ATTACHMENTS YOU DO NOT TRUST.**

Hello Asha

Thank you for your email.

Yes, we would like to have further discussions to find a way to make access to our driveway safer as opposed to cutting it off entirely. As discussed, this is the only full access driveway we have to our property which a number of different businesses rely on to be viable.

Please advise how we can work together to achieve this.

Best Regards



On Feb 12, 2020, at 3:30 PM, Saddi, Asha <[asha.saddi@peelregion.ca](mailto:asha.saddi@peelregion.ca)> wrote:

Hello 

Further to previous correspondence, we would like to meet with you to address your concerns about your driveway access. We are able to offer the following dates and times for a meeting:

- Friday, February 28 – 11-12noon
- Tuesday, March 3 – 2:30-3:30p.m.
- Tuesday, March 10 – 11-12noon

Please confirm a suitable date and time and a meeting invite will be sent to you with location details.

I look forward to hearing from you.

Regards,

*Asha Saddi, BA(Hons), PMP*  
*Technical Analyst, Infrastructure Programming & Studies*  
*Transportation Division*  
*Public Works, Region of Peel*  
*Tel: 905-791-7800 x7794*  
*Fax: 905-791-1442*  
[Asha.Saddi@peelregion.ca](mailto:Asha.Saddi@peelregion.ca)

From: 

Sent: February 13, 2020 10:01 AM

To: Saddi, Asha <[asha.saddi@peelregion.ca](mailto:asha.saddi@peelregion.ca)>

Cc: Bubas, Sonya <[sonya.bubas@peelregion.ca](mailto:sonya.bubas@peelregion.ca)>

Subject: Re: Cawthra Road Environmental Assessment (EA) Comments



**CAUTION: EXTERNAL MAIL. DO NOT CLICK ON LINKS OR OPEN ATTACHMENTS YOU DO NOT TRUST.**

Hello Asha

I am actually out of town all those dates. I will suggest a few to see if they work for you. Anytime March 5, 6, 19, 20 or any day the week of March 23 or March 30.

Kind Regards




On Thu, Feb 13, 2020 at 10:05 AM Saddi, Asha <[asha.saddi@peelregion.ca](mailto:asha.saddi@peelregion.ca)> wrote:

Hello 

Thank you for getting back. Once I have checked availability, I will be in touch with you again.

Regards,

*Asha Saddi, BA(Hons), PMP  
Technical Analyst, Infrastructure Programming & Studies  
Transportation Division  
Public Works, Region of Peel  
Tel: 905-791-7800 x7794  
Fax: 905-791-1442  
[Asha.Saddi@peelregion.ca](mailto:Asha.Saddi@peelregion.ca)*

**From**   
**Sent:** February 22, 2020 3:34 PM  
**To:** Saddi, Asha <[asha.saddi@peelregion.ca](mailto:asha.saddi@peelregion.ca)>  
**Cc:** Bubas, Sonya <[sonya.bubas@peelregion.ca](mailto:sonya.bubas@peelregion.ca)>  
**Subject:** Re: Cawthra Road Environmental Assessment (EA) Comments

**CAUTION: EXTERNAL MAIL. DO NOT CLICK ON LINKS OR OPEN ATTACHMENTS YOU DO NOT TRUST.**

Hello Asha

I just wanted to follow up and make sure I did not miss any correspondence from you. Please advise when you would be available to meet.

Kind Regards



On Feb 25, 2020, at 9:22 AM, Saddi, Asha <[asha.saddi@peelregion.ca](mailto:asha.saddi@peelregion.ca)> wrote:



Hello [REDACTED]

Thank you for your email. We are available on the following dates that you kindly provided.

1. Thursday, March 19 at 1:30-2:30p.m.
2. Friday, March 20 at 1:30 -2:30p.m., and,
3. Monday, March 30 at 11:00 -12noon

Please let me know which date and time works best for you and we'll send you a meeting invite which includes the details of the meeting location.

I look forward to hearing from you.

Regards,

*Asha Saddi, BA(Hons), PMP*  
*Technical Analyst, Infrastructure Programming & Studies*  
*Transportation Division*  
*Public Works, Region of Peel*  
*Tel: 905-791-7800 x7794*  
*Fax: 905-791-1442*  
[Asha.Saddi@peelregion.ca](mailto:Asha.Saddi@peelregion.ca)

**From:** [REDACTED]  
**Sent:** February 26, 2020 2:01 PM  
**To:** Saddi, Asha <[asha.saddi@peelregion.ca](mailto:asha.saddi@peelregion.ca)>  
**Cc:** Bubas, Sonya <[sonya.bubas@peelregion.ca](mailto:sonya.bubas@peelregion.ca)>  
**Subject:** Re: Cawthra Road Environmental Assessment (EA) Comments

**CAUTION: EXTERNAL MAIL. DO NOT CLICK ON LINKS OR OPEN ATTACHMENTS YOU DO NOT TRUST.**

Hello Asha

March 20th would work.

I will look for the meeting details to come. Will the meeting be at your office or our site?

Thanks

[REDACTED]

**From:** Saddi, Asha  
**Sent:** February 26, 2020 2:06 PM  
**To:** [REDACTED]



**Cc:** Bubas, Sonya <[sonya.bubas@peelregion.ca](mailto:sonya.bubas@peelregion.ca)>

**Subject:** RE: Cawthra Road Environmental Assessment (EA) Comments

Hello [REDACTED]

Thank you for confirming the date. The meeting will be at the Region of Peel offices and we will send you a calendar invite with the location details shortly.

We look forward to meeting you on March 20<sup>th</sup>.

Regards,

*Asha Saddi, BA(Hons), PMP*  
*Technical Analyst, Infrastructure Programming & Studies*  
*Transportation Division*  
*Public Works, Region of Peel*  
*Tel: 905-791-7800 x7794*  
*Fax: 905-791-1442*  
[Asha.Saddi@peelregion.ca](mailto:Asha.Saddi@peelregion.ca)

**From:** Saddi, Asha

**Sent:** February 28, 2020 11:33 AM

**To:** [REDACTED]

**Cc:** Bubas, Sonya <[sonya.bubas@peelregion.ca](mailto:sonya.bubas@peelregion.ca)>; Maraj, Kelly <[AshwantieKelly.Maraj@peelregion.ca](mailto:AshwantieKelly.Maraj@peelregion.ca)>

**Subject:** FW: Cawthra Road Environmental Assessment (EA) Comments

Hello [REDACTED]

I wanted to let you know that our Administrative Assistant, Kelly Maraj, has sent you a meeting invitation in Calendar for our meeting on March 20<sup>th</sup>. Please confirm that the date and time is still suitable to you otherwise we are happy to offer you an alternative date and time.

We look forward to hearing from you.

Regards,

*Asha Saddi, BA(Hons), PMP*  
*Technical Analyst, Infrastructure Programming & Studies*  
*Transportation Division*  
*Public Works, Region of Peel*  
*Tel: 905-791-7800 x7794*  
*Fax: 905-791-1442*  
[Asha.Saddi@peelregion.ca](mailto:Asha.Saddi@peelregion.ca)



On Mar 16, 2020, at 4:28 PM, Maraj, Kelly <[ashwantiemelly.maraj@peelregion.ca](mailto:ashwantiemelly.maraj@peelregion.ca)> wrote:

Hello [REDACTED]

We haven't received an acceptance for our scheduled meeting for this Friday, March 20. If you would still like to meet I would suggest that we reschedule Friday's meeting to another date after April 5, given the current health environment. Please let me know of some alternative dates that are convenient to you and we'll be happy to reschedule.

If you don't require a meeting please also let me know.

I look forward to hearing from you.

Regards,

*Asha Saddi, BA(Hons), PMP*  
*Technical Analyst, Infrastructure Programming & Studies*  
*Transportation Division*  
*Public Works, Region of Peel*  
*Tel: 905-791-7800 x7794*  
*Fax: 905-791-1442*  
[Asha.Saddi@peelregion.ca](mailto:Asha.Saddi@peelregion.ca)

[REDACTED]

From: [REDACTED]

Sent: March 16, 2020 4:47 PM

To: Maraj, Kelly <[ashwantiemelly.maraj@peelregion.ca](mailto:ashwantiemelly.maraj@peelregion.ca)>

Cc: Ansari, Seema <[seema.ansari@peelregion.ca](mailto:seema.ansari@peelregion.ca)>; Zois, Anthony <[anthony.zois@peelregion.ca](mailto:anthony.zois@peelregion.ca)>; Kol, Rani <[rani.kol@peelregion.ca](mailto:rani.kol@peelregion.ca)>; Bubas, Sonya <[sonya.bubas@peelregion.ca](mailto:sonya.bubas@peelregion.ca)>; Lee, Arthur <[arthur.lee@peelregion.ca](mailto:arthur.lee@peelregion.ca)>; Saddi, Asha <[asha.saddi@peelregion.ca](mailto:asha.saddi@peelregion.ca)>; Allan Ortlieb <[Allan.Ortlieb@ibigroup.com](mailto:Allan.Ortlieb@ibigroup.com)>; Gorman, Gayle <[gayle.gorman@peelregion.ca](mailto:gayle.gorman@peelregion.ca)>

Subject: Re: Canceled: CONFIRMED: Cawthra Road Environmental Assessment

**CAUTION: EXTERNAL MAIL. DO NOT CLICK ON LINKS OR OPEN ATTACHMENTS YOU DO NOT TRUST.**

Hello Asha

I have it in my calendar but maybe did not respond properly.  
Please suggest another appointment time the week of April 5 or later.  
Thanks

[REDACTED]



**From:** Saddi, Asha  
**Sent:** March 17, 2020 7:45 AM  
**To:** [REDACTED]  
**Cc:** Bubas, Sonya <[sonya.bubas@peelregion.ca](mailto:sonya.bubas@peelregion.ca)>  
**Subject:** RE: Canceled: CONFIRMED: Cawthra Road Environmental Assessment

Good Morning [REDACTED]

Thank you for your email. I'll get back to you with some meeting dates after April 5.

Regards,

*Asha Saddi, BA(Hons), PMP*  
*Technical Analyst, Infrastructure Programming & Studies*  
*Transportation Division*  
*Public Works, Region of Peel*  
*Tel: 905-791-7800 x7794*  
*Fax: 905-791-1442*  
[Asha.Saddi@peelregion.ca](mailto:Asha.Saddi@peelregion.ca)

On Mar 17, 2020, at 2:08 PM, Saddi, Asha <[asha.saddi@peelregion.ca](mailto:asha.saddi@peelregion.ca)> wrote:

Hello [REDACTED]

I'm glad to be able to offer you the following dates:

Friday, May 1 - 1.30 – 2.30

Monday, May 11 - 1.30 – 2.30

Tuesday, May 12 - 2.30 – 3.30

Please let me know which one works best for you and our Administrative Assistant will send you a Calendar invitation.

I look forward to hearing from you.

Regards,

*Asha Saddi, BA(Hons), PMP*  
*Technical Analyst, Infrastructure Programming & Studies*  
*Transportation Division*  
*Public Works, Region of Peel*  
*Tel: 905-791-7800 x7794*  
*Fax: 905-791-1442*  
[Asha.Saddi@peelregion.ca](mailto:Asha.Saddi@peelregion.ca)



**From:** [REDACTED]  
**Sent:** March 19, 2020 6:00 PM  
**To:** Saddi, Asha <[asha.saddi@peelregion.ca](mailto:asha.saddi@peelregion.ca)>  
**Cc:** Bubas, Sonya <[sonya.bubas@peelregion.ca](mailto:sonya.bubas@peelregion.ca)>  
**Subject:** Re: Cawthra Road Environmental Assessment

**CAUTION: EXTERNAL MAIL. DO NOT CLICK ON LINKS OR OPEN ATTACHMENTS YOU DO NOT TRUST.**

Hello Asha

Tuesday May 12 please .  
Regards

[REDACTED]

On Fri, May 1, 2020 at 1:41 PM Saddi, Asha <[asha.saddi@peelregion.ca](mailto:asha.saddi@peelregion.ca)> wrote:

Hello [REDACTED]

Given the current COVID-19 restrictions, would you be available to attend our scheduled meeting on May 12<sup>th</sup> via Skype or another on-line communication tool? The Region also has access to Microsoft Teams if that is an option for you. We would be happy to arrange the meeting on-line and send you the link.

I look forward to hearing from you.  
Regards,

*Asha Saddi, BA(Hons), PMP*  
*Technical Analyst, Infrastructure Programming & Studies*  
[Asha.Saddi@peelregion.ca](mailto:Asha.Saddi@peelregion.ca)

On Mon, May 4, 2020 at 4:43 PM [REDACTED] wrote:

Hello Asha

I will check with my traffic consultant to see if he is available and get back to you.

[REDACTED]



From: [REDACTED]  
Sent: May 5, 2020 10:49 AM  
To: Saddi, Asha <[asha.saddi@peelregion.ca](mailto:asha.saddi@peelregion.ca)>  
Cc: Bubas, Sonya <[sonya.bubas@peelregion.ca](mailto:sonya.bubas@peelregion.ca)>; [REDACTED]  
Subject: Re: FW: Cawthra Road Environmental Assessment

Hello Asha

I spoke with [REDACTED] our traffic consultant, and we are willing to meet virtually, however we are concerned that it will be difficult to sketch it on paper and agree on a solution under these circumstances. If timing for the project is getting tight, we will meet, but if we can wait with no negative impact we would prefer to do so.

Kind regards

[REDACTED]

From: Saddi, Asha <[asha.saddi@peelregion.ca](mailto:asha.saddi@peelregion.ca)>  
Sent: Tuesday, May 05, 2020 3:18 PM  
To: [REDACTED]  
Cc: Bubas, Sonya <[sonya.bubas@peelregion.ca](mailto:sonya.bubas@peelregion.ca)>; [REDACTED]  
Subject: RE: FW: Cawthra Road Environmental Assessment

Hello

Thank you for confirming that you and your consultant are able to meet online on May 12. Let me know if your preference is to use Skype or Microsoft Teams and Kelly Maraj will forward you the meeting invite. The project team would like to hear more about your ideas and you and your consultant are welcome to share any information in advance by email. If you wish to prepare a sketch, would you be able to scan and forward it in advance, or, share it on-screen at the meeting? If not, we can look in to sharing information on-screen that we can all view and mark-up.

I look forward to hearing from you.

Regards,  
*Asha Saddi, BA(Hons), PMP*  
*Technical Analyst, Infrastructure Programming & Studies*  
*Transportation Division*  
*Public Works, Region of Peel*  
*Tel: 905-791-7800 x7794*  
*Fax: 905-791-1442*  
*[Asha.Saddi@peelregion.ca](mailto:Asha.Saddi@peelregion.ca)*



From: [REDACTED]  
Sent: May 5, 2020 3:25 PM  
To: Saddi, Asha <[asha.saddi@peelregion.ca](mailto:asha.saddi@peelregion.ca)>;  
Cc: Bubas, Sonya <[sonya.bubas@peelregion.ca](mailto:sonya.bubas@peelregion.ca)>  
Subject: RE: FW: Cawthra Road Environmental Assessment

**CAUTION: EXTERNAL MAIL. DO NOT CLICK ON LINKS OR OPEN ATTACHMENTS YOU DO NOT TRUST.**

Hi Asha,

I would prefer Microsoft Teams.

Thank you.

[REDACTED]

From: Saddi, Asha  
Sent: May 5, 2020 3:40 PM  
To: [REDACTED]  
Cc: Bubas, Sonya <[sonya.bubas@peelregion.ca](mailto:sonya.bubas@peelregion.ca)>; Maraj, Kelly <[AshwantieKelly.Maraj@peelregion.ca](mailto:AshwantieKelly.Maraj@peelregion.ca)>  
Subject: RE: FW: Cawthra Road Environmental Assessment

Thank you for getting back [REDACTED] Kelly will forward a Microsoft Teams meeting invite to you and on Thursday.

Regards,  
*Asha Saddi, BA(Hons), PMP*  
*Technical Analyst, Infrastructure Programming & Studies*  
*Transportation Division*  
*Public Works, Region*  
*of Peel Tel: 905-791-*  
*7800 x7794 Fax: 905-*  
*791-1442*  
[Asha.Saddi@peelregion.ca](mailto:Asha.Saddi@peelregion.ca)



## Lee, Arthur

---

**From:** Bubas, Sonya  
**Sent:** October 27, 2020 10:14 AM  
**To:** [REDACTED]  
**Cc:** [REDACTED]; Saddi, Asha; Lee, Arthur; Jamroz, Damian; Eisa, Eisa; Ansari, Seema; Kol, Rani; Zois, Anthony; Nieuwenhuysen, Bob; Hamdani, Hashim; Allan Ortlieb  
**Subject:** RE: [REDACTED]  
**Attachments:** 15-4380\_Meeting Notes\_[REDACTED] (2020 05 12).pdf

Hi [REDACTED],

Thank you for your email below, dated June 12, 2020. The Project Team has carefully considered your suggestions for alternative designs and provide the following comments.

In the first scenario, the suggested alternative is a centre island restricting the southbound traffic from entering the left turn lanes until past the driveway. The suggested island, as illustrated in your email, would not alleviate conflict for northbound left movements into the driveway and has the potential for southbound queues/delay to significantly increase.

In the second scenario, the suggested alternative is a painted hatch design with signage and a flashing yellow light. A painted or hatched area as described in your email is reserved for emergency services driveways (such as for Fire Hall entrance locations) and is not utilized by the Region at commercial properties. The "Do Not Block Driveway" sign and flashing light are not enforceable.

The EA Study identified traffic safety issues resulting from speeding and turning movements north of Queensway on Cawthra Road. Following review of alternatives, the EA recommendation is to extend the centre median on the north leg of the Queensway and Cawthra Road intersection and restrict access to [REDACTED] to right-in and right-out. A "No U-turn" sign will be installed at the end of the island for northbound traffic as well as a "No Left turn" sign facing the driveway for those exiting.

The EA Project File Report will recommend that mitigation measures be further explored during the detailed design phase to accommodate vehicles exiting [REDACTED] (going eastbound on Queensway and ultimately north on Cawthra Road). An example of mitigation is construction of a U-turn at the intersection of Queensway and Tedlo Street or midblock on Queensway between Cawthra Road and Tedlo Street.

I trust this email has addressed your comments. I have also attached the notes of our meeting on May 12 for your reference. If you have any questions or additional comments, please feel free to contact me at [sonya.bubas@peelregion.ca](mailto:sonya.bubas@peelregion.ca) or 905-791-7800 ext. 7801.

Sincerely,

**Sonya Bubas, MCIP, RPP**  
Project Manager  
Infrastructure Programming & Studies  
Region of Peel  
10 Peel Centre Dr., Suite B, 4<sup>th</sup> Floor  
Brampton, ON L6T 4B9  
905-791-7800 ext. 7801





This email, including any attachments, is intended for the recipient specified in the message and may contain information which is confidential or privileged. Any unauthorized use or disclosure of this email is prohibited. If you are not the intended recipient or have received this e-mail in error, please notify the sender via return email and permanently delete all copies of the email. Thank you.

---

**From:** [REDACTED]  
**Sent:** June 12, 2020 11:29 AM  
**To:** Saddi, Asha <asha.saddi@peelregion.ca>; Bubas, Sonya <sonya.bubas@peelregion.ca>  
**Cc:** [REDACTED]  
**Subject:** [REDACTED]

**CAUTION: EXTERNAL MAIL. DO NOT CLICK ON LINKS OR OPEN ATTACHMENTS YOU DO NOT TRUST.**

Hello Sonya and Sasha

In follow up to our discussions regarding the proposed median across our driveway at [REDACTED], we have an alternative design for your consideration. Please forward to the appropriate parties.

We have agreed that the accidents are a result of two scenarios.

One being that vehicles proceeding south are entering the centre painted median prior to the left turn lanes and colliding with vehicles exiting the driveway turning north. This can be avoided by a simple island restricting the southbound traffic from entering the left turn lanes until past the driveway. The island is designed so that it does not impact flow from our neighbours driveway.

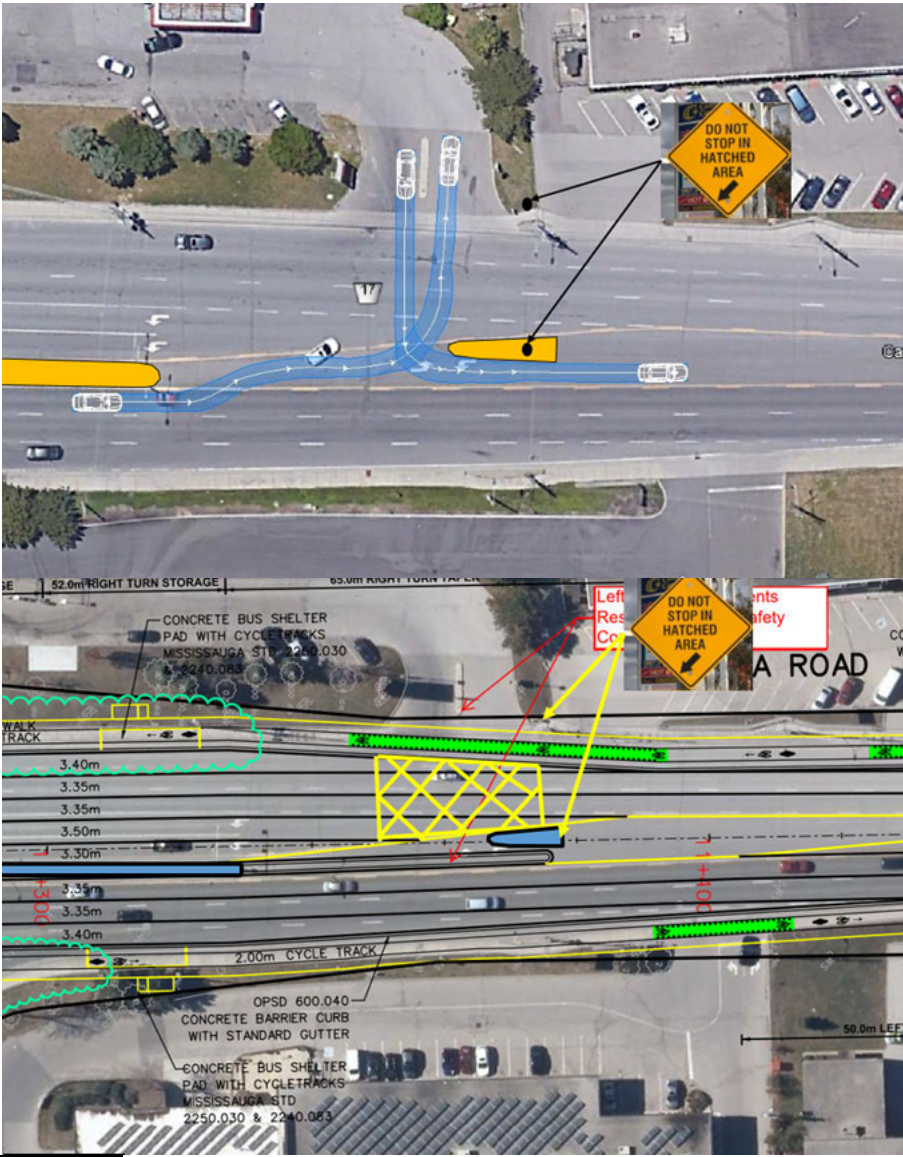
Secondly, during rush hour periods, vehicles heading south are blocking the driveway when the light turns red. We are suggesting a white or yellow painted hatch design on the pavement to remind drivers to be courteous. In addition, a sign on the island and curb reminding drivers to not stop on the hatched area. This will enable vehicles turning in and out to have a clear vision of traffic rather than having to squeeze out between blocking vision cars as they do currently. We could go a step further and have a flashing yellow light to alert drivers to be cautious in this area.

As discussed previously, this access is critical to the viability of the businesses on our property. We appreciate you working with us to come up with a solution.

Please advise what your comments are on our proposal and what the next steps are.

Best Regards







# Meeting Notes

**Cawthra Road Environmental Assessment (EA) from Queen Elizabeth Way (QEW) to Eastgate Parkway – Microsoft Teams Meeting with the Property Owner of [REDACTED], Mississauga**  
**Date: Tuesday, May 12, 2020**  
**Time: 2:30p.m. – 3:30p.m.**

**Present:**

Property Owner:

[REDACTED] (Property Owner, [REDACTED]) and [REDACTED] ([REDACTED])

Region of Peel:

Sonya Bubas (Project Manager, Cawthra Road EA), Allan Ortlieb (Project Manager, IBI Group), Arthur Lee (Designer, Cawthra Road EA), Asha Saddi (Technical Analyst, Cawthra Road EA), Tony Zois (Capital Acquisition, Real Property Asset Management), Gayle Gorman (Manager, Real Property Asset Management), Seema Ansari (Technical Analyst, Traffic Safety), and, Rani Kol (Specialist, Traffic Development)

#	DESCRIPTION
1	<p><b>Welcome and Introductions</b></p> <ul style="list-style-type: none"> <li>The Region of Peel Project Manager welcomed the Property Owner of [REDACTED], and his consultant [REDACTED] ([REDACTED]) and explained the purpose of the meeting was to discuss the preliminary preferred design and the Property Owner's suggestions on a safe driveway access to [REDACTED].</li> <li>Round table introductions took place.</li> </ul>
2	<p><b>Region of Peel Cawthra Road Class EA Study</b></p> <p>The Region of Peel is completing the Schedule B Cawthra Road EA (from QEW to Eastgate Parkway). The EA looks at improving traffic operations and safety for all road users, including intersection improvements.</p> <p>The Public Information Centre (PIC) for the EA was held in November 2019. The Property Owner attended the PIC where he viewed the preliminary preferred design with project team members. He had also submitted a Comment Sheet. Following the PIC, he requested an opportunity to meet with the project team to discuss his ideas on how to make the entrance to his property safer while accommodating all traffic movements.</p> <p>Before COVID-19 an in-person meeting was scheduled for the project team to meet with the Property Owner, but this date later fell subject to the imposed COVID-19 restrictions. The Property Owner was agreeable to meeting on-line using the Microsoft Teams platform and the meeting was rescheduled to accommodate this.</p>
3	<p><b>Traffic Study – Traffic Operations and Collision Data for [REDACTED]</b></p> <p>The Region of Peel Consultant explained as part of the EA a traffic safety review was undertaken</p>

**Public Works**



	<p>along Cawthra Road. As part of the review, it was noted that a disproportionately high number of collisions occurred at the driveway to the property at [REDACTED], compared to other driveways and midblock segments within the corridor. In total, 35 collisions were recorded over a 5 year period, predominantly (88%) associated with left turn movements entering and exiting the site.</p> <p>The project team had looked at how to mitigate these collisions by controlling the left in and left out of the driveway. At the PIC the Property Owner had agreed that there were a lot of collisions at this location.</p>
4	<p><b>Cawthra Road EA Preliminary Preferred Design</b></p> <p>The proposed preliminary design for the driveway access to [REDACTED] shared at the PIC was reviewed with the Property Owner.</p> <p>The proposed preliminary design currently shows the extension of the raised median for the southbound left turn lane to restrict the northbound-left movement into the property and eastbound left coming out of the property.</p>
5	<p><b>Property Owner's Suggestions for a Safe Driveway Access to [REDACTED]</b></p> <p>The property at [REDACTED] was purchased in 1984 and the business was built in 1985. There are six businesses on the property. The Property Owner said there was no history of patrons involved in collisions approaching the property owner regarding access concerns other than on one occasion when someone slipped on ice outside the doughnut store, but this did not involve his business.</p> <p>The Property Owner expressed his desire to keep the roadway safe. The passing traffic along Cawthra Road/Queensway East was essential for his business to remain viable. This was the only full access driveway to the property and the other businesses also relied on this access.</p> <p>The business had been closed for six weeks due to COVID-19 and it will take nearly six months to build complete the rehabilitation work currently underway on the property (including convenience store).</p> <p>The Property Owner indicated that during a red light on Cawthra Road at Queensway East, southbound vehicles tend to block the driveway, leaving no gap in the traffic for other vehicles to turn in or out. Turning vehicles have no option but to try to squeeze in between the waiting traffic, which makes it difficult for other vehicles entering the centre median.</p> <p>The Property Owner had several suggestions on how the access to the driveway could be made safe and avoid restricting traffic movements at the entrance. His suggestions for a safe driveway access were:</p> <ol style="list-style-type: none"> <li>1) The Region of Peel reinforce that drivers not block the driveway through pavement markings on the road to deter southbound vehicles on Cawthra Road from blocking the driveway entrance when there is a red light at the Queensway East intersection. This would create safer conditions for vehicles by allowing traffic movement and better sightlines. The property owner referenced an example at a location on Highway 7. He would take a picture of that location and send it to the project team to review.</li> <li>2) Install a median island (immediately north of the driveway) to prevent vehicles from</li> </ol>

**Public Works**



	<p>prematurely exiting the southbound through lanes and using the centre left turn lane to avoid through lane queues in order to access the southbound dual left turn lane at the Queensway East intersection. He felt this would prevent a lot of collisions, and,</p> <p>3) He was willing to pay for the installation of a flashing light, if that was considered an option for safety.</p> <p>The Region of Peel Consultant pointed out that the ‘Do not block the driveway’ sign is not enforceable. The Traffic Specialist also confirmed that on its own signage has not proven to be successful in restricting traffic movements. It was usually the physical barriers that were used for these restrictions.</p>
6	<p><b>EA Project timing</b></p> <p>The Region of Peel is preparing the Project File Report (PFR) and this will be reviewed by the technical agencies when completed. The PFR will then be available for the public to view for a 30-day review period.</p>
7	<p><b>Next Steps</b></p> <p>The Project Team members will consider the Property Owner’s suggestions for a safe driveway access.</p> <p>The Property Owner will prepare his formal comments on the proposed preliminary design and forward them to the Project Team with his sketches and pictures of the Highway 7 location, by May 22, 2020.</p> <p>He will also check for video records from the gas station entrance prior to the COVID-19 quarantine to get a better understanding of the traffic volumes and the frequency of vehicles turning northbound left into the property and exiting eastbound left.</p>

---

**Public Works**



Phone call – December 4, 2019

██████████ representing ██████████ called to ask about next steps and I explained we received and will be reviewing his comments (attached) with the Project Team. I acknowledged his request for a meeting and indicated that we may not be able to formally respond until the New Year (as we are receiving comments until December 13, will need to review all comments, and Staff availability may be limited this month). He understood the process and just wanted to be proactive in following up. He also had an additional question to his comments: Can he receive information on the number of accidents, particularly accidents at his entrance? I will look into this for our response to his comments.



**From:** [Bubas, Sonya](#)  
**To:** [Saddi, Asha](#)  
**Subject:** Cawthra Rd EA - Public Comment  
**Date:** November 19, 2019 2:55:23 PM

---

Hi Asha,

I received a call from [REDACTED] this afternoon (~12:19pm) regarding the Cawthra Rd EA. He resides at [REDACTED] and his number is [REDACTED]. He received the Notice of PIC with comment form in the mail and may not be able to attend the PIC. He is concerned for road widening and speeding. I invited him to attend the PIC, view the PIC information on-line after November 27 and provide comments using the comment form.

Thanks,

**Sonya Bubas, MCIP, RPP**  
Project Manager  
Infrastructure Programming & Studies  
Region of Peel  
10 Peel Centre Dr., Suite B, 4<sup>th</sup> Floor  
Brampton, ON L6T 4B9  
905-791-7800 ext. 7801

This email, including any attachments, is intended for the recipient specified in the message and may contain information which is confidential or privileged. Any unauthorized use or disclosure of this email is prohibited. If you are not the intended recipient or have received this e-mail in error, please notify the sender via return email and permanently delete all copies of the email. Thank you.



**From:** [REDACTED]  
**Sent:** November 21, 2019 5:38 PM  
**To:** Bubas, Sonya <sonya.bubas@peelregion.ca>  
**Subject:** Comment sheet

Hello Sonya

My father, [REDACTED] has asked me to email you the comment sheet about the work being done on Cawthra road. If yo have any questions or comments please let me know or can call him directly. The number is on the sheet.

Regards,

[REDACTED]



Comment Sheet

**Cawthra Road from QEW to Eastgate Parkway, Mississauga  
Environmental Assessment**

**Public Information Centre  
Wednesday, November 27, 2019**

**PLEASE PRINT**

Name:

Date:

E-mail:

Number &

City:

Postal Co

Phone:

**Comments:**

We have lived here for 46 years. We have witnessed and protested one widening of Cawthra Road. We are concerned that this will happen again. We are a residential area and widening would destroy the value of our property.

The speed limit is 50km/h. This should be monitored with more police patrols. The safety of the residences and pedestrians is a grave concern with the high speed the cars are travelling on Cawthra Rd.

Please send your comments by **December 13, 2019** to:

Sonya Bubas, MCIP, RPP  
Project Manager  
Region of Peel  
10 Peel Centre Drive, Suite B, 4th Floor  
Brampton, Ontario L6T 4B9

Phone: 905.791.7800 ext. 7801  
Fax: 905.791.1442  
Email: [sonya.bubas@peelregion.ca](mailto:sonya.bubas@peelregion.ca)



**From:** Saddi, Asha  
**Sent:** January 17, 2020 11:23 AM  
**To:** [REDACTED]  
**Cc:** Bubas, Sonya <sonya.bubas@peelregion.ca>  
**Subject:** Cawthra Road Environmental Assessment (EA) Comments

Hello [REDACTED]

Thank you for attending and providing your comments for the Cawthra Road EA Public Information Centre. The project team will consider these comments and get back to you. In the meantime, if you have any other comments or questions please do not hesitate to contact me.

Regards,

***Asha Saddi, BA(Hons), PMP***  
***Technical Analyst, Infrastructure Programming & Studies***  
***Transportation Division***  
***Public Works, Region of Peel***  
***Tel: 905-791-7800 x7794***  
***Fax: 905-791-1442***  
***[Asha.Saddi@peelregion.ca](mailto:Asha.Saddi@peelregion.ca)***



This email, including any attachments, is intended for the recipient specified in the message and may contain information which is confidential or privileged. Any unauthorized use or disclosure of this email is prohibited. If you are not the intended recipient or have received this e-mail in error, please notify the sender via return email and permanently delete all copies of the email. Thank you.



**From:** Maraj, Kelly

**Sent:** March 23, 2020 2:41 PM

**To:** [REDACTED]

**Cc:** Allan Ortlieb <Allan.Ortlieb@IBIGroup.com>; Eisa, Eisa <Eisa.Eisa@peelregion.ca>; Saddi, Asha <Asha.Saddi@peelregion.ca>; Lee, Arthur <arthur.lee@peelregion.ca>; Bubas, Sonya <sonya.bubas@peelregion.ca>

**Subject:** Cawthra Road Environmental Assessment - response to comment

Hello [REDACTED]

Thank you for submitting your Comment Sheet for the Cawthra Road Public Information Centre. Please find attached a letter addressing the comments you raised.

If you have any further questions or comments please don't hesitate to email Sonya Bubas, Project Manager, at [sonya.bubas@peelregion.ca](mailto:sonya.bubas@peelregion.ca).

Regards,

*Asha Saddi, BA(Hons), PMP*  
*Technical Analyst, Infrastructure Programming & Studies*  
*Transportation Division*  
*Public Works, Region of Peel*  
*Tel: 905-791-7800 x7794*  
*Fax: 905-791-1442*  
[Asha.Saddi@peelregion.ca](mailto:Asha.Saddi@peelregion.ca)





March 23, 2020  
Project No. 15-4380

**Public Works**

10 Peel Centre Dr.  
Suite B  
Brampton, ON  
L6T 4B9  
tel: 905-791-7800

peelregion.ca



Dear [REDACTED],

**RE: Cawthra Road from QEW to Eastgate Parkway, Mississauga  
Environmental Assessment**

Thank you for your comments regarding the Cawthra Road Environmental Assessment (EA) Study. The Project Team has reviewed your comment sheet dated November 20, 2019 and offer the following response.

Widening Cawthra Road for additional through lanes within the project limits is not recommended at this stage of the EA Study. The EA Study currently recommends corridor and intersection improvements, such as cycle tracks / raised bike lanes throughout and additional turning lanes at intersections where warranted. Specific locations where improvements are proposed can be viewed on the Project Website at:

<https://www.peelregion.ca/pw/transportation/construction/environmental-assessment/cawthra-road.asp>.

The EA Study recognizes speeding on Cawthra Road as an issue and recommends reduced lane widths within the project limits to encourage motorists to slow down. The Study also recommends removal/replacement of channelized islands with smart channels or traditional right-turn lanes. Smart channels improve the visibility of oncoming vehicles and pedestrians for drivers and encourages motorists to slow down at the channel. In addition to these recommendations, we will forward your suggestion for monitoring the 50km/h speed limit on Cawthra Road to Peel Regional Police for their consideration.

The EA Study also recommends a number of safety measures for cyclists. At traditional crosswalks, cyclists have to dismount and cross the intersection by walking their bikes. Cross-rides are proposed to allow cyclists to ride their bike within the crossing without dismounting. A separated cross-ride would provide a dedicated space for cyclists, which in turn would provide additional safety for both cyclists and pedestrians.



We trust this letter has addressed your comments. If you have any questions or additional comments, please feel free to contact me at 905-791-7800, extension 7801, or [sonya.bubas@peelregion.ca](mailto:sonya.bubas@peelregion.ca).

Sincerely,



**Public Works**

10 Peel Centre Dr.  
Suite B  
Brampton, ON  
L6T 4B9  
tel: 905-791-7800

[peelregion.ca](http://peelregion.ca)

Sonya Bubas, MCIP, RPP  
Project Manager  
Infrastructure Programming and Studies  
Transportation Division, Public Works

cc: Allan Ortlieb, Project Manager, IBI Group  
Eisa Eisa, Traffic Operations, Region of Peel  
Asha Saddi, Technical Analyst, Region of Peel



Comment Sheet

**Cawthra Road from QEW to Eastgate Parkway, Mississauga  
Environmental Assessment**

**Public Information Centre  
Wednesday, November 27, 2019**

**PLEASE PRINT**

Name:

Date:

E-mail:

Number & Street:

City:

Postal Code:

Phone:

**Comments:**

- Garbage bins location (where?)  
(will they be?)
- please remove abandoned street light  
(old object) from my property.
- concerns about bike lane safety. because  
is busy street. concerns for safety for cyclist

Please send your comments by **December 13, 2019** to:

Sonya Bubas, MCIP, RPP  
Project Manager  
Region of Peel  
10 Peel Centre Drive, Suite B, 4th Floor  
Brampton, Ontario L6T 4B9

Phone: 905.791.7800 ext. 7801  
Fax: 905.791.1442  
Email: [sonya.bubas@peelregion.ca](mailto:sonya.bubas@peelregion.ca)



**From:** Saddi, Asha  
**Sent:** January 17, 2020 11:23 AM  
**To:** [REDACTED]  
**Cc:** Bubas, Sonya <sonya.bubas@peelregion.ca>  
**Subject:** Cawthra Road Environmental Assessment (EA) Comments

Hello [REDACTED]

Thank you for attending and providing your comments for the Cawthra Road EA Public Information Centre. The project team will consider these comments and get back to you. In the meantime, if you have any other comments or questions please do not hesitate to contact me.

Regards,

***Asha Saddi, BA(Hons), PMP***  
***Technical Analyst, Infrastructure Programming & Studies***  
***Transportation Division***  
***Public Works, Region of Peel***  
***Tel: 905-791-7800 x7794***  
***Fax: 905-791-1442***  
***[Asha.Saddi@peelregion.ca](mailto:Asha.Saddi@peelregion.ca)***



This email, including any attachments, is intended for the recipient specified in the message and may contain information which is confidential or privileged. Any unauthorized use or disclosure of this email is prohibited. If you are not the intended recipient or have received this e-mail in error, please notify the sender via return email and permanently delete all copies of the email. Thank you.



**From:** Maraj, Kelly

**Sent:** March 23, 2020 2:44 PM

**To:** [REDACTED]

**Cc:** Allan Ortlieb <Allan.Ortlieb@IBIGroup.com>; Saddi, Asha <Asha.Saddi@peelregion.ca>; Bubas, Sonya <sonya.bubas@peelregion.ca>; Lee, Arthur <arthur.lee@peelregion.ca>; Laing, Rick <Rick.Laing@peelregion.ca>; Barnsdale, Garnet <Garnet.Barnsdale@peelregion.ca>

**Subject:** Cawthra Road Environmental Assessment - response to comment

Hello

Thank you for submitting your Comment Sheet for the Cawthra Road Public Information Centre. Please find attached a letter addressing the comments you raised.

If you have any further questions or comments please don't hesitate to email Sonya Bubas, Project Manager, at [sonya.bubas@peelregion.ca](mailto:sonya.bubas@peelregion.ca).

Regards,

*Asha Saddi, BA(Hons), PMP*  
*Technical Analyst, Infrastructure Programming & Studies*  
*Transportation Division*  
*Public Works, Region of Peel*  
*Tel: 905-791-7800 x7794*  
*Fax: 905-791-1442*  
[Asha.Saddi@peelregion.ca](mailto:Asha.Saddi@peelregion.ca)





March 23, 2020  
Project No. 15-4380

**Public Works**

10 Peel Centre Dr.  
Suite B  
Brampton, ON  
L6T 4B9  
tel: 905-791-7800

peelregion.ca



Dear 

**RE: Cawthra Road from QEW to Eastgate Parkway, Mississauga  
Environmental Assessment**

Thank you for providing your comments at the Public Information Centre on November 27, 2019 for the Cawthra Road Environmental Assessment (EA) Study. The Project Team has reviewed your written comments and offer the following response.

The proposed design for Cawthra Road will have minimal impact to garbage collection. For garbage collection following construction, you will be able to place the garbage bin on the boulevard next to the cycling infrastructure.

The Region has contacted the City of Mississauga regarding your request to remove an abandoned streetlight on your property. The City's contractors have recently removed the cables that run from the front of your property to the pole on the boulevard. The pole and the attached signs will remain on the boulevard.

Regarding the safety of cyclists, the EA Study recommends the following:

- Cycle tracks throughout the corridor to provide dedicated space for cyclists that is separated from vehicles on the roadway by a raised curb and boulevard.
- Raised bike lanes closer to the roadway at driveway crossings to maintain the visibility of cyclists for motorists exiting their driveway, and to maintain the quality of ride for cyclists crossing numerous driveways (raised bike lanes are separated from vehicles on the roadway by a raised curb).
- Cross-rides at intersections to allow cyclists to ride their bike within the crossing without dismounting. A separated cross-ride provides a dedicated space for cyclists, which in turn provides additional safety for cyclists and pedestrians.



We trust this letter has addressed your comments. If you have any questions or additional comments, please feel free to contact me at 905-791-7800, extension 7801, or [sonya.bubas@peelregion.ca](mailto:sonya.bubas@peelregion.ca).

Sincerely,



**Public Works**

10 Peel Centre Dr.  
Suite B  
Brampton, ON  
L6T 4B9  
tel: 905-791-7800

[peelregion.ca](http://peelregion.ca)

Sonya Bubas, MCIP, RPP  
Project Manager  
Infrastructure Programming and Studies  
Transportation Division, Public Works

cc: Allan Ortlieb, Project Manager, IBI Group  
Asha Saddi, Technical Analyst, Region of Peel  
Garnet Barnsdale, Waste Collection, Region of Peel  
Rick Laing, Traffic Signals & Streetlighting, Region of Peel



**Comment Sheet**

**Cawthra Road from QEW to Eastgate Parkway, Mississauga  
Environmental Assessment**

**Public Information Centre  
Wednesday, November 27, 2019**

**PLEASE PRINT**

Name: [REDACTED]

Date: \_\_\_\_\_

E-mail: \_\_\_\_\_

Number & Street: \_\_\_\_\_

City: \_\_\_\_\_

Postal Code: \_\_\_\_\_

Phone: \_\_\_\_\_

---

---

**Comments:**

- Landscaping shrubs on west side of Cawthra north of Rathburn Rd.
- Improve safety of intersection - beautify
- Manage noise on Cawthra due to increased traffic (we back onto Cawthra)
- Painted Intersection (crossmarks)
- Lighting at all times
- 7pm to 7am Truck Restriction on Cawthra
- Pathway from Grey Cedar to Burnhamthorpe upgraded

Please send your comments by **December 13, 2019** to:

Sonya Bubas, MCIP, RPP

Project Manager

Region of Peel

10 Peel Centre Drive, Suite B, 4th Floor

Brampton, Ontario L6T 4B9

Phone: 905.791.7800 ext. 7801

Fax: 905.791.1442

Email: [sonya.bubas@peelregion.ca](mailto:sonya.bubas@peelregion.ca)



Comment Sheet

**Cawthra Road from QEW to Eastgate Parkway, Mississauga  
Environmental Assessment**

**Public Information Centre  
Wednesday, November 27, 2019**

**PLEASE PRINT**

Name:

Date:

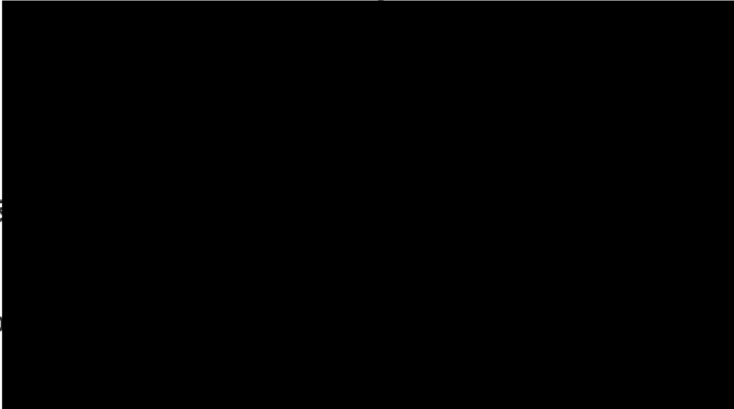
E-mail:

Number 8:

City:

Postal Co:

Phone:



**Comments:**

Over the past two years Cawthra Rd has become the new Hwy 427. Why? Because no one authority cares. Trying to enter Cawthra from an east-west cross street, in our case Schomberg Ave. at most times of the day can be a daunting and risky because the speed of vehicles moving north and south on Cawthra.

I believe the focus should be on Dixie Rd to handle more traffic. Dixie is wide from 401 to the Q.E. It has mostly businesses on the east-west side. Cawthra has solid housing on both sides from Eastgate to Dundas.

Take traffic from Cawthra, move it to Dixie 6/1/19

Please send your comments by **December 13, 2019** to:

Sonya Bubas, MCIP, RPP  
Project Manager  
Region of Peel  
10 Peel Centre Drive, Suite B, 4th Floor  
Brampton, Ontario L6T 4B9

Phone: 905.791.7800 ext. 7801  
Fax: 905.791.1442  
Email: [sonya.bubas@peelregion.ca](mailto:sonya.bubas@peelregion.ca)



Dec 02/19



**From:** [Maraj, Kelly](#)  
**To:** [REDACTED]  
**Cc:** [Bubas, Sonya](#); [Saddi, Asha](#); [Lee, Arthur](#); [Allan Ortlieb](#); [Eisa, Eisa](#)  
**Subject:** Cawthra Road Environment Assessment - response to comment  
**Date:** April 24, 2020 1:04:00 PM  
**Attachments:** [REDACTED]

---

Hello [REDACTED]

Thank you for submitting your Comment Sheet for the Cawthra Road Public Information Centre. Please find attached a letter addressing the comments you raised.

If you have any further questions or comments please don't hesitate to email Sonya Bubas, Project Manager, at [sonya.bubas@peelregion.ca](mailto:sonya.bubas@peelregion.ca).

Thank you

**Kelly (Ashwantie) Maraj, CAP, OM**

Administrative Assistant to the Manager, Transportation

Infrastructure Programming & Studies

Region of Peel, 10 Peel Centre Dr., Suite B, 4<sup>th</sup> Floor

Brampton, ON L6T 4B9

905-791-7800 ext. 7831





April 24, 2020  
Project No. 15-4380



Dear [REDACTED],

**Public Works**

10 Peel Centre Dr.  
Suite B  
Brampton, ON  
L6T 4B9  
tel: 905-791-7800

peelregion.ca

**RE: Cawthra Road from QEW to Eastgate Parkway, Mississauga  
Environmental Assessment**

Thank you for your comments regarding the Cawthra Road Environmental Assessment (EA) Study. The Project Team has reviewed your written comments and offer the following response.

Widening Cawthra Road was found not to be the best alternative to accommodate traffic demands and other road users such as cyclists and pedestrians mainly due to the residential property constraints within the central section of the corridor. The EA Study recommends the following improvements to address traffic growth and speeding on Cawthra Road between QEW and Eastgate Parkway:

- Intersection improvements, such as additional turning lanes where warranted, for traffic operational and safety benefits.
- Reduced lane widths to encourage motorists to slow down.

Diverting traffic from Cawthra Road to Dixie Road is not expected to address traffic demand on Cawthra Road. Cawthra Road is a busy connector route between two Provincial Highways (403 to the north and QEW to the south). Given the traffic volumes served by these two major highways, Cawthra Road would likely continue to serve high traffic volumes following efforts for traffic diversion.

We trust this letter has addressed your comments. If you have any questions or additional comments, please feel free to contact me at 905-791-7800, extension 7801, or [sonya.bubas@peelregion.ca](mailto:sonya.bubas@peelregion.ca)

Sincerely,



Sonya Bubas, MCIP, RPP  
Project Manager  
Infrastructure Programming and Studies  
Transportation Division, Public Works



cc: Allan Ortlieb, Project Manager, IBI Group  
Eisa Eisa, Traffic Operations, Region of Peel  
Asha Saddi, Technical Analyst, Region of Peel  
Arthur Lee, Senior Designer, Region of Peel

**Public Works**

10 Peel Centre Dr.  
Suite B  
Brampton, ON  
L6T 4B9  
tel: 905-791-7800

[peelregion.ca](http://peelregion.ca)



**Comment Sheet**

**Cawthra Road from QEW to Eastgate Parkway, Mississauga  
Environmental Assessment**

**Public Information Centre  
Wednesday, November 27, 2019**

**PLEASE PRINT**

Name:

Date:

E-mail:

Number & Street:

City:

Postal Code:

Phone:



**Comments:**

I really like what I'm seeing in terms of safety improvements and planning for future projects on cross roads. The only future project I see missing from consideration is Dundas Connects.

Please send your comments by **December 13, 2019** to:

Sonya Bubas, MCIP, RPP

Project Manager

Region of Peel

10 Peel Centre Drive, Suite B, 4th Floor

Brampton, Ontario L6T 4B9

Phone: 905.791.7800 ext. 7801

Fax: 905.791.1442

Email: [sonya.bubas@peelregion.ca](mailto:sonya.bubas@peelregion.ca)

Information will be collected in accordance with the *Municipal Freedom of Information and Protection of Privacy Act*. With the exception of personal information, all comments will become part of the public record.



From: Maraj, Kelly

Sent: March 23, 2020 2:47 PM

To: [REDACTED]

Cc: Allan Ortlieb <Allan.Ortlieb@IBIGroup.com>; Saddi, Asha <Asha.Saddi@peelregion.ca>; Lee, Arthur <arthur.lee@peelregion.ca>; Bubas, Sonya <sonya.bubas@peelregion.ca>

Subject: Cawthra Road Environmental Assessment - response to comment

Hello [REDACTED]

Thank you for submitting your Comment Sheet for the Cawthra Road Public Information Centre. Please find attached a letter addressing the comments you raised.

If you have any further questions or comments please don't hesitate to email Sonya Bubas, Project Manager, at [sonya.bubas@peelregion.ca](mailto:sonya.bubas@peelregion.ca).

Regards,

*Asha Saddi, BA(Hons), PMP  
Technical Analyst, Infrastructure Programming & Studies  
Transportation Division  
Public Works, Region of Peel  
Tel: 905-791-7800 x7794  
Fax: 905-791-1442  
[Asha.Saddi@peelregion.ca](mailto:Asha.Saddi@peelregion.ca)*

 **Region  
of Peel**  
working with you



March 23, 2020  
Project No. 15-4380

**Public Works**

10 Peel Centre Dr.  
Suite B  
Brampton, ON  
L6T 4B9  
tel: 905-791-7800

[peelregion.ca](http://peelregion.ca)



Dear ,

**RE: Cawthra Road from QEW to Eastgate Parkway, Mississauga  
Environmental Assessment**

Thank you for providing your comments at the Public Information Centre on November 27, 2019 for the Cawthra Road Environmental Assessment (EA) Study. The Project Team has reviewed your written comments and offer the following response.

Your comment sheet indicates support for the safety improvements shown in the proposed road design and we appreciate your comments.

Dundas Connects was identified as a future project that may need to be coordinated with improvements on Cawthra Road. The City of Mississauga is currently consulted as a member of the Technical Advisory Committee for the Cawthra Road EA Study and will be further contacted for information on this future project.

We trust this letter has addressed your comments. If you have any questions or additional comments, please feel free to contact me at 905-791-7800, extension 7801, or [sonya.bubas@peelregion.ca](mailto:sonya.bubas@peelregion.ca).

Sincerely,



Sonya Bubas, MCIP, RPP  
Project Manager  
Infrastructure Programming and Studies  
Transportation Division, Public Works

cc: Allan Ortlieb, Project Manager, IBI Group  
Asha Saddi, Technical Analyst, Region of Peel



July 10, 2020  
Project No. 15-4380

**Public Works**

10 Peel Centre Dr.  
Suite B  
Brampton, ON  
L6T 4B9  
tel: 905-791-7800

[peelregion.ca](http://peelregion.ca)

[REDACTED]

Dear [REDACTED]

**RE: Cawthra Road from QEW to Eastgate Parkway, Mississauga  
Environmental Assessment**

Thank you for providing your comments at the Public Information Centre on November 27, 2019 for the Cawthra Road Environmental Assessment (EA) Study.

We note your comments regarding the difficulties getting in and out of your Plaza parking lot. Traffic signals at the south access to the Plaza were considered, however this option is not feasible due to the proximity of the access to the signalized intersection of Cawthra Road and Burnhamthorpe Road.

The options to address safety issues at the south access would be to impose restrictions to left turn movements. A right-in / right-out only access with a raised centre median on Cawthra Road was considered, however this option is not feasible due to impacts to the northbound left turn lane approaching Burnhamthorpe Road as well as the existing residential accesses on the west side. The effectiveness of constructing a right-in / right-out access without a raised centre median on Cawthra Road, or implementing signage alone to restrict left turn movements, is expected to be limited.

Due to the above constraints, the EA Study recommendation is to monitor the south access to the Plaza parking lot for potential on-going operation and safety concerns. Site access alternatives or restrictions may be necessary in the future or in conjunction with any future redevelopment proposals.

If you have any questions or additional comments, please feel free to contact me at 905-791-7800, extension 7801, or [sonya.bubas@peelregion.ca](mailto:sonya.bubas@peelregion.ca).



**Public Works**

10 Peel Centre Dr.  
Suite B  
Brampton, ON  
L6T 4B9  
tel: 905-791-7800

[peelregion.ca](http://peelregion.ca)

Sincerely,



Sonya Bubas, MCIP, RPP  
Project Manager  
Infrastructure Programming and Studies  
Transportation Division, Public Works

Cc: Allan Ortlieb, Project Manager, IBI Group  
Asha Saddi, Technical Analyst, Region of Peel  
Seema Ansari, Technical Analyst, Region of Peel  
Rani Kol, Specialist, Region of Peel





## Lee, Arthur

---

**To:** Lee, Arthur  
**Subject:** RE: Cawthra Road Environmental Assessment - response to comment

**From:** Bubas, Sonya <[sonya.bubas@peelregion.ca](mailto:sonya.bubas@peelregion.ca)>

**Sent:** July 10, 2020 7:36 AM

**To:** [REDACTED]

**Cc:** Allan Ortlieb <[Allan.Ortlieb@IBIGroup.com](mailto:Allan.Ortlieb@IBIGroup.com)>; Saddi, Asha <[asha.saddi@peelregion.ca](mailto:asha.saddi@peelregion.ca)>; Ansari, Seema <[seema.ansari@peelregion.ca](mailto:seema.ansari@peelregion.ca)>; Kol, Rani <[rani.kol@peelregion.ca](mailto:rani.kol@peelregion.ca)>

**Subject:** Cawthra Road Environmental Assessment - response to comment

Hi [REDACTED],

Thank you for submitting your Comment Sheet for the Cawthra Road Public Information Centre. Please find attached a letter addressing the comments you raised.

If you have any further questions or comments, please don't hesitate to contact me.

Regards,

**Sonya Bubas, MCIP, RPP**

Project Manager

Infrastructure Programming & Studies

Region of Peel

10 Peel Centre Dr., Suite B, 4<sup>th</sup> Floor

Brampton, ON L6T 4B9

905-791-7800 ext. 7801



This email, including any attachments, is intended for the recipient specified in the message and may contain information which is confidential or privileged. Any unauthorized use or disclosure of this email is prohibited. If you are not the intended recipient or have received this e-mail in error, please notify the sender via return email and permanently delete all copies of the email. Thank you.



Comment Sheet

**Cawthra Road from QEW to Eastgate Parkway, Mississauga  
Environmental Assessment**

**Public Information Centre  
Wednesday, November 27, 2019**

**PLEASE PRINT**

Name: [REDACTED]  
Date: [REDACTED]  
E-mail: [REDACTED]  
Number & Street: [REDACTED]  
City: [REDACTED]  
Postal Code: [REDACTED]  
Phone: [REDACTED]

**Comments:**

OVER THE YEARS WE HAVE COMMUNICATED OUR CONCERNS WITH THE REGION SEVERAL TIMES WITH RESPECT TO THE DIFFICULTIES GETTING IN AND OUT OF OUR PLAZA PARKING LOT. #  
- PRESENTLY WE HAVE A COMMON RIGHT-OF-WAY WITH PLAZA NEXT DOOR HOWEVER IT IS ALSO DIFFICULT TO TURN LEFT ONTO BURNHAMTHORPE IN ORDER FOR PEOPLE TO TURN SOUTHBOUND ONTO CAWTHRA. - WE HAVE ALSO TRIED TO APPROACH UKRANIAN CHURCH ON SOUTH SIDE OF US IN ORDER TO CONSOLIDATE WITH NO SUCCESS. THEY REFUSE TO COOPERATE.

Please send your comments by **December 13, 2019** to:

Sonya Bubas, MCIP, RPP  
Project Manager  
Region of Peel  
10 Peel Centre Drive, Suite B, 4th Floor  
Brampton, Ontario L6T 4B9

Phone: 905.791.7800 ext. 7801  
Fax: 905.791.1442  
Email: [sonya.bubas@peelregion.ca](mailto:sonya.bubas@peelregion.ca)



-----Original Message-----

From: Dela Cruz, Gino <gino.delacruz@peelregion.ca>  
Sent: November 1, 2018 4:14 PM  
To: Bubas, Sonya <sonya.bubas@peelregion.ca>  
Subject: FW: File Number 15-4380 Cawthra Road Study

Hi Sonya - I received a voicemail from [REDACTED] which I will forward to your voice mailbox. I believe her concerns are the same as before - cars coming out of the plaza on Cawthra south of Burnhamthorpe. [REDACTED]  
[REDACTED] Can you please respond back to her voicemail with an update on the study and her concerns? [REDACTED]

Let me know if you have any questions and if you want to discuss further.

Thanks,  
Gino

-----Original Message-----

From: [REDACTED]  
Sent: August 18, 2016 2:22 PM  
To: Dela Cruz, Gino  
Subject: File Number 15-4380 Cawthra Road Study

Hello Mr. Dela Cruz,

We are in receipt of your notice regarding the study on Cawthra Road.

My name is [REDACTED] and I am the [REDACTED], the owner of [REDACTED], on the south east corner of Cawthra and Burnamthorpe Roads.

Our understanding is that your study will examine the needs and opportunities for transportation improvements within the Cawthra Road corridor.

We would like to bring to your attention that entering and exiting our plaza is a nightmare. The heavy traffic going both directions on Cawthra makes it impossible to exit the parking lot. Especially when making a left turn to go south on Cawthra Road. Various accidents have occurred and this is affecting our tenants' business.

In addition to this traffic congestion, our neighbour on the south is the large Ukranian church and they have a very large congregation who attend their services every Sunday, plus extra functions during the week. This creates further chaos.

We would like to have a stop light similar to the one the Region of Peel has installed at Dixie & Burnamthorpe Roads. They had the same situation we are encountering until a second traffic light was installed on Dixie just south of Burmanthorpe Road.



I'm sure you are already aware of our situation and I hope I have illustrated our frustration with it.

Thank you for the opportunity to allow my input.





Comment Sheet

**Cawthra Road from QEW to Eastgate Parkway, Mississauga  
Environmental Assessment**

**Public Information Centre  
Wednesday, November 27, 2019**

**PLEASE PRINT**

Name: \_\_\_\_\_

Date: \_\_\_\_\_

E-mail: \_\_\_\_\_

Number & Street \_\_\_\_\_

City: \_\_\_\_\_

Postal Code: \_\_\_\_\_

Phone: \_\_\_\_\_

**Comments:**

I would like to know if and how the Region & City are cooperating on ~~the~~ improving the pedestrian links between Cawthra Road and Dundas St., considering your proposed cycle track and the cycle tracks/bike lanes to be added as part of Dundas Connects.

The current stairway ~~connection~~ <sup>connection</sup> is narrow, poorly lit and covered in bird excrement, and needs significant improvements.

Please send your comments by **December 13, 2019** to:

Sonya Bubas, MCIP, RPP

Project Manager

Region of Peel

10 Peel Centre Drive, Suite B, 4th Floor

Brampton, Ontario L6T 4B9

Phone: 905.791.7800 ext. 7801

Fax: 905.791.1442

Email: [sonya.bubas@peelregion.ca](mailto:sonya.bubas@peelregion.ca)



On Fri, Jan 17, 2020 at 11:32 AM Saddi, Asha <[asha.saddi@peelregion.ca](mailto:asha.saddi@peelregion.ca)> wrote:

Hello

Thank you for providing your comments for the Cawthra Road EA Public Information Centre. The project team will consider these comments and get back to you. In the meantime, if you have any other comments or questions please do not hesitate to contact me.

Regards,

*Asha Saddi, BA(Hons), PMP*

*Technical Analyst, Infrastructure Programming & Studies*

*Transportation Division*

*Public Works, Region of Peel*

**From:** [REDACTED]  
**Sent:** January 17, 2020 11:44 AM  
**To:** Saddi, Asha <[asha.saddi@peelregion.ca](mailto:asha.saddi@peelregion.ca)>  
**Cc:** Bubas, Sonya <[sonya.bubas@peelregion.ca](mailto:sonya.bubas@peelregion.ca)>  
**Subject:** Re: Cawthra Road Environmental Assessment (EA) Comments

Hello Asha

Thank you for your email and the update. I look forward to receiving your reply regarding my comments.

I do have some questions about the current work on Erin Mills Parkway...I was hoping to speak to your colleague at the public meeting but he was in conversation with others.

Essentially, I'm curious about the construction staging for the bicycle infrastructure and especially the design of the intersection of Dundas & Erin Mills, with the redesigned slip lanes and new queue-jump lanes.

Regards,

[REDACTED]

On Fri, Jan 17, 2020, 12:02 Saddi, Asha <[asha.saddi@peelregion.ca](mailto:asha.saddi@peelregion.ca)> wrote:

Hello [REDACTED]

Thank you for your email. The project team will also get back to you on these additional comments.



Regards

*Asha Saddi, BA(Hons), PMP*

*Technical Analyst, Infrastructure Programming & Studies*

*Transportation Division*

[Asha.Saddi@peelregion.ca](mailto:Asha.Saddi@peelregion.ca)

**From:** [REDACTED]  
**Sent:** January 17, 2020 12:04 PM  
**To:** Saddi, Asha <asha.saddi@peelregion.ca>  
**Cc:** Bubas, Sonya <sonya.bubas@peelregion.ca>  
**Subject:** Re: Cawthra Road Environmental Assessment (EA) Comments

Thank you

[REDACTED]

**From:** **Saddi, Asha** <[asha.saddi@peelregion.ca](mailto:asha.saddi@peelregion.ca)>  
**Date:** Wed, Feb 12, 2020, 09:59 AM  
**Subject:** FW: Cawthra Road Environmental Assessment (EA) Comments  
**To:** [REDACTED] >  
**Cc:** Bubas, Sonya <[sonya.bubas@peelregion.ca](mailto:sonya.bubas@peelregion.ca)>

Hello [REDACTED]

Please could you provide additional information about your concern on Erin Mills Parkway so that we can direct it to the correct staff member.

I look forward to hearing from you.

Regards,

*Asha Saddi, BA(Hons), PMP*

*Technical Analyst, Infrastructure Programming & Studies*

[Asha.Saddi@peelregion.ca](mailto:Asha.Saddi@peelregion.ca)

**From:** [REDACTED] >  
**Sent:** February 12, 2020 10:25 AM  
**To:** Saddi, Asha <asha.saddi@peelregion.ca>  
**Cc:** Bubas, Sonya <sonya.bubas@peelregion.ca>  
**Subject:** Re: FW: Cawthra Road Environmental Assessment (EA) Comments

**CAUTION: EXTERNAL MAIL. DO NOT CLICK ON LINKS OR OPEN ATTACHMENTS YOU DO NOT TRUST.**

Hello Asha



I'm curious about the time lines for completing the new Multi-Use trails and bicycle signal infrastructure between Sheridan Park and The Collegeway.

I'm also curious about why there doesn't appear to be any plan for bicycle signals to cross Burnhamthorpe (especially since the Burnhamthorpe MUT is on the north side of the road)

Finally I'd like to know if the Queue-jump lanes at Dundas and Erin Mills Parkway will have bus-priority signals and initiatives to help transit move more efficiently.

Regards, [REDACTED]

On Mon, Mar 23, 2020, 14:54 Maraj, Kelly <[ashwantiemelly.maraj@peelregion.ca](mailto:ashwantiemelly.maraj@peelregion.ca)> wrote:

Hello [REDACTED]

Thank you for submitting your Comment Sheet for the Cawthra Road Public Information Centre. Please find attached a letter addressing the comments you raised.

If you have any further questions or comments please don't hesitate to email Sonya Bubas, Project Manager, at [sonya.bubas@peelregion.ca](mailto:sonya.bubas@peelregion.ca).

Regards,

*Asha Saddi, BA(Hons), PMP*  
*Technical Analyst, Infrastructure Programming & Studies*  
*Transportation Division*  
*Public Works, Region of Peel*  
*Tel: 905-791-7800 x7794*  
*Fax: 905-791-1442*  
[Asha.Saddi@peelregion.ca](mailto:Asha.Saddi@peelregion.ca)



**From:** Maraj, Kelly

**Sent:** March 23, 2020 2:55 PM

**To:** [REDACTED]

**Cc:** Allan Ortlieb <Allan.Ortlieb@IBIGroup.com>; Saddi, Asha <Asha.Saddi@peelregion.ca>; Lee, Arthur <arthur.lee@peelregion.ca>; Bubas, Sonya <sonya.bubas@peelregion.ca>; Tan, Jerry <Jerry.Tan@peelregion.ca>; Woodtke, Trevor <Trevor.Woodtke@peelregion.ca>

**Subject:** Cawthra Road Environmental Assessment - response to comment

Hello [REDACTED]

Thank you for submitting your Comment Sheet for the Cawthra Road Public Information Centre. Please find attached a letter addressing the comments you raised.

If you have any further questions or comments please don't hesitate to email Sonya Bubas, Project Manager, at [sonya.bubas@peelregion.ca](mailto:sonya.bubas@peelregion.ca).

Regards,

*Asha Saddi, BA(Hons), PMP*  
*Technical Analyst, Infrastructure Programming & Studies*  
*Transportation Division*  
*Public Works, Region of Peel*  
*Tel: 905-791-7800 x7794*  
*Fax: 905-791-1442*  
[Asha.Saddi@peelregion.ca](mailto:Asha.Saddi@peelregion.ca)





March 23, 2020  
Project No. 15-4380

**Public Works**

10 Peel Centre Dr.  
Suite B  
Brampton, ON  
L6T 4B9  
tel: 905-791-7800

[peelregion.ca](http://peelregion.ca)



Dear 

**RE: Cawthra Road from QEW to Eastgate Parkway, Mississauga  
Environmental Assessment**

Thank you for providing your comments at the Public Information Centre on November 27, 2019 for the Cawthra Road Environmental Assessment (EA) Study, and for your subsequent questions regarding work on Erin Mills Parkway. The Project Team offers the following response.

The City of Mississauga is currently consulted as a member of the Technical Advisory Committee for the Cawthra Road EA Study and will be further contacted to review your comments regarding safe pedestrian and cycling links between Cawthra Road and Dundas Street.

Regarding the stairway connection between Dundas Street and Cawthra Road, the City of Mississauga completed some repairs to the stairs in 2019. The City will continue to maintain the cleanliness and lighting of the stairs while improvements to the connection and lighting will be considered during the design of any future bridge works.

Your comments regarding Erin Mills Parkway have been forwarded to the Region's Project Manager, Jerry Tan for a separate response. In the meantime, you can view information regarding construction on Erin Mills Parkway, including timelines, on the Region's website at:

<http://www.peelregion.ca/pw/construction/miss/184635.htm>.

You can also contact Jerry Tan, Project Manager, at 905-791-7800, extension 7916, or [jerry.tan@peelregion.ca](mailto:jerry.tan@peelregion.ca) if you have any other questions regarding the work on Erin Mills Parkway.

We trust this letter has addressed your comments. If you have any questions or additional comments regarding the Cawthra Road EA Study, please feel free to contact me at 905-791-7800, extension 7801, or [sonya.bubas@peelregion.ca](mailto:sonya.bubas@peelregion.ca).



**Public Works**

10 Peel Centre Dr.  
Suite B  
Brampton, ON  
L6T 4B9  
tel: 905-791-7800

[peelregion.ca](http://peelregion.ca)

Sincerely,



Sonya Bubas, MCIP, RPP  
Project Manager  
Infrastructure Programming and Studies  
Transportation Division, Public Works

cc: Allan Ortlieb, Project Manager, IBI Group  
Asha Saddi, Technical Analyst, Region of Peel  
Trevor Woodtke, Asset Management Specialist, Region of Peel  
Jerry Tan, Project Manager, Region of Peel



**From:** [REDACTED]

**Sent:** March 24, 2020 11:59 AM

**To:** Maraj, Kelly <ashwantiemelly.maraj@peelregion.ca>

**Cc:** Allan Ortlieb <Allan.Ortlieb@ibigroup.com>; Saddi, Asha <asha.saddi@peelregion.ca>; Lee, Arthur <arthur.lee@peelregion.ca>; Bubas, Sonya <sonya.bubas@peelregion.ca>; Tan, Jerry <jerry.tan@peelregion.ca>; Woodtke, Trevor <trevor.woodtke@peelregion.ca>

**Subject:** Re: Cawthra Road Environmental Assessment - response to comment

**CAUTION: EXTERNAL MAIL. DO NOT CLICK ON LINKS OR OPEN ATTACHMENTS YOU DO NOT TRUST.**

Thank you all for the letter and the information about the Cawthra Road EA and the Erin Mills Parkway project work.

Regards, [REDACTED]

Comment Sheet

**Cawthra Road from QEW to Eastgate Parkway, Mississauga  
Environmental Assessment**

**Public Information Centre  
Wednesday, November 27, 2019**

**PLEASE PRINT**

Name:

Date:

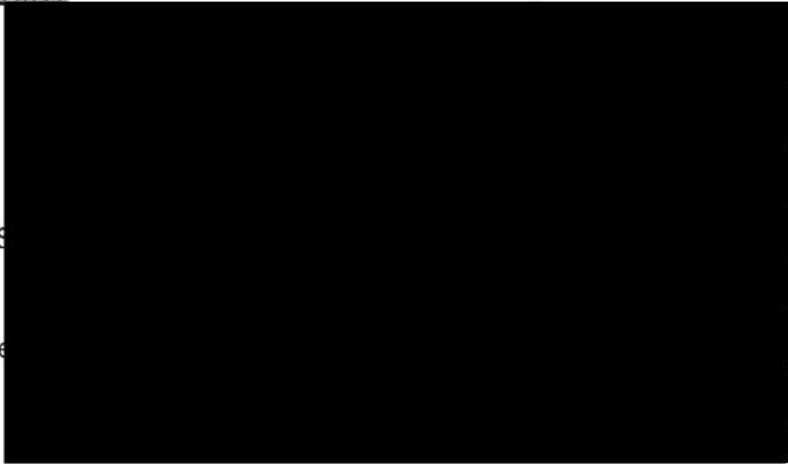
E-mail:

Number & S

City:

Postal Code

Phone:



Keep me informed!  
I did not receive a letter!

**Comments:**

→ ensure residents of willowbank area invited.

→ Be mindful of connections to high schools (especially John Labot S.S.) at ~~QEW~~ Rathburn + Cawthra

→ signage at various driveways for both drivers + cyclists (hidden drive way, ex. at gas station).

→ exit to south bound from eastgate/forest fire lane to allow easier access to meadows blvd. Cawthra

→ minimize ramps/raises for cyclists under bridge at Dundas - very hard to bike up at times.

Please send your comments by **December 13, 2019** to:



Sonya Bubas, MCIP, RPP  
Project Manager  
Region of Peel  
10 Peel Centre Drive, Suite B, 4th Floor  
Brampton, Ontario L6T 4B9

Phone: 905.791.7800 ext. 7801  
Fax: 905.791.1442  
Email: [sonya.bubas@peelregion.ca](mailto:sonya.bubas@peelregion.ca)



— maybe try 5 lanes on Cawthra with middle lane being changed in direction depending on day (ex.

3 lanes northbound at A.M. rush,

2 lanes southbound at P.M. rush.  
(similar to Parc Ave in Montreal,  
Jarvis in Toronto).

**From:** Maraj, Kelly

**Sent:** March 23, 2020 2:57 PM

**To:** [REDACTED]

**Cc:** Allan Ortlieb <Allan.Ortlieb@IBIGroup.com>; Eisa, Eisa <Eisa.Eisa@peelregion.ca>; Saddi, Asha <Asha.Saddi@peelregion.ca>; Lee, Arthur <arthur.lee@peelregion.ca>; Bubas, Sonya <sonya.bubas@peelregion.ca>

**Subject:** Cawthra Road Environmental Assessment - response to comment

Hello

Thank you for submitting your Comment Sheet for the Cawthra Road Public Information Centre. Please find attached a letter addressing the comments you raised.

If you have any further questions or comments please don't hesitate to email Sonya Bubas, Project Manager, at [sonya.bubas@peelregion.ca](mailto:sonya.bubas@peelregion.ca).

Regards,

*Asha Saddi, BA(Hons), PMP  
Technical Analyst, Infrastructure Programming & Studies  
Transportation Division  
Public Works, Region of Peel  
Tel: 905-791-7800 x7794  
Fax: 905-791-1442  
[Asha.Saddi@peelregion.ca](mailto:Asha.Saddi@peelregion.ca)*





March 23, 2020  
Project No. 15-4380



Dear [REDACTED],

**Public Works**

10 Peel Centre Dr.  
Suite B  
Brampton, ON  
L6T 4B9  
tel: 905-791-7800

[peelregion.ca](http://peelregion.ca)

**RE: Cawthra Road from QEW to Eastgate Parkway, Mississauga  
Environmental Assessment**

Thank you for providing your comments at the Public Information Centre on November 27, 2019 for the Cawthra Road Environmental Assessment (EA) Study. The Project Team has reviewed your written comments and offer the following response.

We note the connections to high schools near Cawthra Road and Rathburn Road, such as John Cabot Secondary School, and appreciate your comment.

We also note your comment regarding signage for drivers and cyclists at various driveways with reference to a hidden driveway at a gas station. The Region will review the need for signage at driveways where sightlines could be affected by existing fencing and/or vegetation during the detailed design phase of the project.

Your comments suggest an exit to Cawthra Road southbound from Eastgate Parkway / Forest Fire Lane to allow easier access to Meadows Boulevard. As shown at the Public Information Centre, the City of Mississauga is proposing a multi-use trail connection from Forest Fire Lane to Eastgate Parkway which will allow easier access to the existing multi-use trail on the west side of Cawthra Road to Meadows Boulevard. We will share your comments with the City of Mississauga for information.

Your comments also suggest minimizing the ramps/raises under the bridge at Dundas Street for cyclists as it may be difficult to cycle uphill. The proposed cycling infrastructure currently follows the existing grade adjacent to the road. Installing retaining walls to raise the grade of the proposed cycling infrastructure for minimizing the incline for cyclists is not feasible at this time. The grade separation south of Dundas Street serves both the Dundas Street and Canadian Pacific (CP) railway crossings. This grade separation spans wider than the traditional standard grade separation and is therefore not as steep compared to other standard grade separations.

**Public Works**

10 Peel Centre Dr.  
Suite B  
Brampton, ON  
L6T 4B9  
tel: 905-791-7800

[peelregion.ca](http://peelregion.ca)

The Project Team has reviewed your suggestion to re-purpose the centre median lane along Cawthra Road to reduce the traffic volumes during the morning and afternoon rush hours. Re-purposing the centre median lane is not recommended at this time due to the potential impact on traffic flow, for example:

- The centre two-way left-turn lane facilitates access to numerous residential and business properties along the corridor. By removing or re-purposing the centre two-way left-turn lane, vehicles travelling through the corridor would have to wait for left-turning vehicles to complete their movement, which could increase the risk of rear-end collisions.
- Accommodating an interchangeable lane as suggested in your comments would be very difficult at intersections and conflict with designated left turn lanes.

Further, your contact information has been added to our mailing list to receive future notices on this Study. Information about the Study is also available on the Project Website at:

<http://www.peelregion.ca/pw/transportation/construction/environmental-assessment/cawthra-road.asp>

Notices regarding this Study are mailed to property owners adjacent to Cawthra Road within the Study limits. We also reach out to others who may be interested in the Study by advertising Notices in the Mississauga News, tweeting announcements @regionofpeel, and updating the above Project website. Details regarding the Public Information Centre were also advertised on mobile signs placed within the study area.

We trust this letter has addressed your comments. If you have any questions or additional comments, please feel free to contact me at 905-791-7800, extension 7801, or [sonya.bubas@peelregion.ca](mailto:sonya.bubas@peelregion.ca).

Sincerely,



Sonya Bubas, MCIP, RPP  
Project Manager  
Infrastructure Programming and Studies  
Transportation Division, Public Works

cc: Allan Ortlieb, Project Manager, IBI Group  
Eisa Eisa, Traffic Operations, Region of Peel  
Asha Saddi, Technical Analyst, Region of Peel  
Arthur Lee, Senior Designer, Region of Peel



**Comment Sheet**

**Cawthra Road from QEW to Eastgate Parkway, Mississauga  
Environmental Assessment**

**Public Information Centre  
Wednesday, November 27, 2019**

**PLEASE PRINT**

Name:

Date:

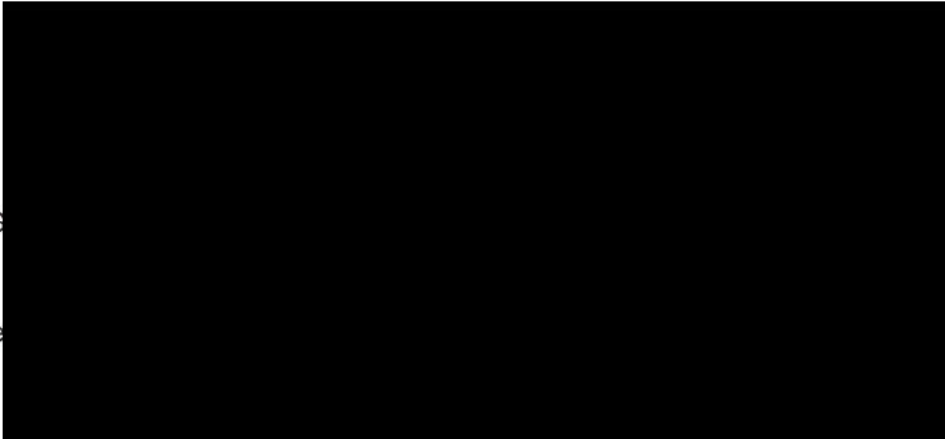
E-mail:

Number & Street:

City:

Postal Code:

Phone:



**Comments:**

How will bike lanes affect garbage pickup? Can the trucks reach the containers or will we have to put them on the bike lanes

Please send your comments by **December 13, 2019** to:

Sonya Bubas, MCIP, RPP  
Project Manager  
Region of Peel  
10 Peel Centre Drive, Suite B, 4th Floor  
Brampton, Ontario L6T 4B9

Phone: 905.791.7800 ext. 7801  
Fax: 905.791.1442  
Email: [sonya.bubas@peelregion.ca](mailto:sonya.bubas@peelregion.ca)

**From:** [Maraj, Kelly](#)  
**To:** [REDACTED]  
**Cc:** [Allan Ortlieb](#); [Barnsdale, Garnet](#); [Saddi, Asha](#); [Lee, Arthur](#); [Bubas, Sonya](#)  
**Subject:** Cawthra Road Environment Assessment - response to comment  
**Date:** March 23, 2020 3:00:00 PM  
**Attachments:** [REDACTED]

---

Hello [REDACTED]

Thank you for submitting your Comment Sheet for the Cawthra Road Public Information Centre. Please find attached a letter addressing the comments you raised.

If you have any further questions or comments please don't hesitate to email Sonya Bubas, Project Manager, at [sonya.bubas@peelregion.ca](mailto:sonya.bubas@peelregion.ca).

Regards,

***Asha Saddi, BA(Hons), PMP***  
***Technical Analyst, Infrastructure Programming & Studies***  
***Transportation Division***  
***Public Works, Region of Peel***  
***Tel: 905-791-7800 x7794***  
***Fax: 905-791-1442***  
***[Asha.Saddi@peelregion.ca](mailto:Asha.Saddi@peelregion.ca)***





March 23, 2020  
Project No. 15-4380

**Public Works**

10 Peel Centre Dr.  
Suite B  
Brampton, ON  
L6T 4B9  
tel: 905-791-7800

peelregion.ca



Dear ,

**RE: Cawthra Road from QEW to Eastgate Parkway, Mississauga  
Environmental Assessment**

Thank you for providing your comments at the Public Information Centre on November 27, 2019 for the Cawthra Road Environmental Assessment (EA) Study.

In response to the questions on your comment sheet, the proposed design for Cawthra Road will have minimal impact to garbage collection. For garbage collection following construction, you will be able to place the garbage bin on the boulevard next to the cycling infrastructure.

If you have any additional questions or comments, please feel free to contact me at 905-791-7800, extension 7801, or [sonya.bubas@peelregion.ca](mailto:sonya.bubas@peelregion.ca).

Sincerely,



Sonya Bubas, MCIP, RPP  
Project Manager  
Infrastructure Programming and Studies  
Transportation Division, Public Works

cc: Allan Ortlieb, Project Manager, IBI Group  
Garnet Barnsdale, Waste Collection, Region of Peel  
Asha Saddi, Technical Analyst, Region of Peel  
Arthur Lee, Senior Designer, Region of Peel

Comment Sheet

**Cawthra Road from QEW to Eastgate Parkway, Mississauga  
Environmental Assessment**

**Public Information Centre  
Wednesday, November 27, 2019**

**PLEASE PRINT**

Name: \_\_\_\_\_

Date: \_\_\_\_\_

E-mail: \_\_\_\_\_

Number & Street \_\_\_\_\_

City: \_\_\_\_\_

Postal Code: \_\_\_\_\_

Phone: \_\_\_\_\_

**Comments:**

- THE INTERSECTION OF CAWTHRA AND BURMAN TORPE IS  
DUE TO CURRENT TRAFFIC VOLUMES HAS NUMEROUS ACCIDENTS  
WEEKLY.

\* ~~HOW~~ ~~DATE~~ WHAT WILL BE PUT IN PLACE TO REDUCE ACCIDENTS  
WITH THE HIGHER VOLUMES OF TRAFFIC?

\*

Please send your comments by **December 13, 2019** to:

Sonya Bubas, MCIP, RPP  
Project Manager  
Region of Peel  
10 Peel Centre Drive, Suite B, 4th Floor  
Brampton, Ontario L6T 4B9

Phone: 905.791.7800 ext. 7801  
Fax: 905.791.1442  
Email: [sonya.bubas@peelregion.ca](mailto:sonya.bubas@peelregion.ca)



**From:** [Maraj, Kelly](#)  
**To:** [REDACTED]  
**Cc:** [Allan Ortlieb](#); [Eisa, Eisa](#); [Saddi, Asha](#); [Lee, Arthur](#); [Bubas, Sonya](#)  
**Subject:** Cawthra Road Environmental Assessment - response to comment  
**Date:** March 23, 2020 3:03:00 PM  
**Attachments:** [REDACTED]

---

Hello [REDACTED]

Thank you for submitting your Comment Sheet for the Cawthra Road Public Information Centre. Please find attached a letter addressing the comments you raised.

If you have any further questions or comments please don't hesitate to email Sonya Bubas, Project Manager, at [sonya.bubas@peelregion.ca](mailto:sonya.bubas@peelregion.ca).

Regards,

***Asha Saddi, BA(Hons), PMP***  
***Technical Analyst, Infrastructure Programming & Studies***  
***Transportation Division***  
***Public Works, Region of Peel***  
***Tel: 905-791-7800 x7794***  
***Fax: 905-791-1442***  
***[Asha.Saddi@peelregion.ca](mailto:Asha.Saddi@peelregion.ca)***



March 23, 2020  
Project No. 15-4380

**Public Works**

10 Peel Centre Dr.  
Suite B  
Brampton, ON  
L6T 4B9  
tel: 905-791-7800

[peelregion.ca](http://peelregion.ca)



Dear [REDACTED],

**RE: Cawthra Road from QEW to Eastgate Parkway, Mississauga  
Environmental Assessment**

Thank you for providing your comments at the Public Information Centre on November 27, 2019 for the Cawthra Road Environmental Assessment (EA) Study. The Project Team has reviewed your written comments and offer the following response.

We note your comment indicating numerous weekly accidents at the intersection of Cawthra Road and Burnhamthorpe Road due to current traffic volumes.

The traffic analysis for the EA Study showed that turning movement collisions was the dominant collision type at the intersection of Cawthra Road and Burnhamthorpe Road. A reduced radius at the intersection is proposed to provide greater visibility to drivers of pedestrians crossing and to encourage vehicles to slow down when making a right turn. In addition, it is proposed to provide fully protected northbound and southbound left turn signal phases and extend green signal time available.

We trust this letter has addressed your comments. If you have any additional questions or comments, please feel free to contact me at 905-791-7800, extension 7801, or [sonya.bubas@peelregion.ca](mailto:sonya.bubas@peelregion.ca).

Sincerely,



Sonya Bubas, MCIP, RPP  
Project Manager  
Infrastructure Programming and Studies  
Transportation Division, Public Works

cc: Allan Ortlieb, Project Manager, IBI Group  
Eisa Eisa, Traffic Operations, Region of Peel  
Asha Saddi, Technical Analyst, Region of Peel  
Arthur Lee, Senior Designer, Region of Peel



## Saddi, Asha

---

**From:** Bubas, Sonya  
**Sent:** November 29, 2019 10:19 AM  
**To:** Bubas, Sonya; Saddi, Asha  
**Subject:** Cawthra Rd EA - Note to File

### Voice mails:

- (1) November 28, 12:41pm - [REDACTED] on Cawthra Road in Mississauga. I went on your website because apparently there was a meeting last night from 7-9 on some proposals happening on Cawthra. I went on the website to get some information and it keeps giving me sever error with this website – is there something else I can do or if you don't mind calling me [REDACTED] (that's my cell) anytime I would appreciate it. It's quarter to one on Thursday the 28<sup>th</sup>. Thanks, looking forward to hearing from you.
  - Left return voice mail on November 29 at ~10am.
  
- (2) November 28, 3:16pm – I'm calling regarding this meeting that was last night about the Cawthra Road Environment Assessment and I couldn't make it last night so I'm just wondering where could I get some information to see what [is planned] for the future of this street, so if you could call me back at [REDACTED] and the name is [].
  - Retuned call on November 29 at ~10:10am.
  - Wondered if widening was proposed
  - Thought bike lanes were a waste of time and money because no one rides their bike on Cawthra Road
  - Suggested an overpass at Eastgate and Cawthra because most of the traffic is there.
  - Will review proposed plans when they are available on the website and submit written comments or call back with questions.
  - Name and address is [REDACTED] Cawthra Road.

**Sonya Bubas, MCIP, RPP**  
Project Manager  
Infrastructure Programming & Studies  
Region of Peel  
10 Peel Centre Dr., Suite B, 4<sup>th</sup> Floor  
Brampton, ON L6T 4B9  
905-791-7800 ext. 7801



This email, including any attachments, is intended for the recipient specified in the message and may contain information which is confidential or privileged. Any unauthorized use or disclosure of this email is prohibited. If you are not the intended recipient or have received this e-mail in error, please notify the sender via return email and permanently delete all copies of the email. Thank you.

## **PUBLIC CORRESPONDENCE**



From: [REDACTED]  
Date: September 12, 2018 at 7:33:01 PM EDT  
To: <[Gino.DelaCruz@peelregion.ca](mailto:Gino.DelaCruz@peelregion.ca)>  
Subject: Cawthra & QEW - info?  
Reply-To: [REDACTED]

Web Form Title :: Comments and Questions about the Cawthra Rd EA

This email was sent by the following person. Please reply to them:

Sender's Name: [REDACTED]  
Sender's Email: [REDACTED]

The message was submitted through an Automated Email Service on Peel's Website  
Wed Sep 12 19:33:29 2018:

-----

Is this about Cawthra around the QEW? If so, I have a few things to say/ask..

-----

It is the Region of Peel's policy to reply to e-mails within two working days.

For assistance, please contact the [webmaster@peelregion.ca](mailto:webmaster@peelregion.ca)

:: NOTE ABOUT CONTACT INFORMATION ::

Contact information can be forged. There is no way to accurately verify a person's name and email address on the Internet.

**From:** [REDACTED]  
**Sent:** September 27, 2018 4:47 PM  
**To:** Bubas, Sonya <sonya.bubas@peelregion.ca>  
**Cc:** Eisa H., Eisa <Eisa.Eisa@peelregion.ca>; Lee, Arthur <arthur.lee@peelregion.ca>  
**Subject:** Re: Fw: Cawthra & QEW - info?

Yes please.  
When was the 'bridge rehabilitation'?  
thanks for looking into this for me!

On Thu, Sep 27, 2018 at 2:46 PM Bubas, Sonya <[sonya.bubas@peelregion.ca](mailto:sonya.bubas@peelregion.ca)> wrote:

Hi [REDACTED]

We were able to confirm that the Region has not carried out construction work at this location in recent years, and we do not have details regarding recent construction in this area.

However, we were able to confirm that the Ministry of Transportation recently completed bridge rehabilitation work in the area, and so the Ministry may have applied temporary lane markings during construction.

Please let me know if you would like us to share your inquiry (including contact information) with the Ministry.

Regards,

Sonya Bubas, MCIP, RPP  
Project Manager  
Transportation, Infrastructure Programming and Studies

**From:** [REDACTED]  
**Sent:** September 26, 2018 2:31 PM  
**To:** Bubas, Sonya  
**Subject:** Re: Fw: Cawthra & QEW - info?

Hi Sonya,

Any thoughts on this?

thx,

[REDACTED]



On Thu, Sep 13, 2018 at 2:42 PM Bubas, Sonya <[sonya.bubas@peelregion.ca](mailto:sonya.bubas@peelregion.ca)> wrote:

Hi [REDACTED]

Thank you for providing your comments by email. I will review your comments with Regional Staff and we will follow-up with a reply.

Regards,  
Sonya

---

**From:** [REDACTED]  
**Sent:** September 13, 2018 2:02 PM  
**To:** Bubas, Sonya  
**Subject:** Re: Fw: Cawthra & QEW - info?

It's about this intersection, and onramp, which is South of the QEW

I would like the details on the few construction projects that happened with respect to lane markings right there over the last few years.

There was work done, and I'd like to get the 'before and after' lane markings info.. Then a short time later, there was additional work done, and I'd like the before&after info for that particular job as well.

As it stands right now, it is unsafe, as people coming northbound on Cawthra in the right hand lane, FREQUENTLY, change lanes in the intersection INTO the right-hand turning lane for people off south service rd...

Now, I get that the right-turners have a red, but a distinct stop at the line, and rolling into the presumably open lane has almost got me smoked a few times.... And I have sat to watch and it's kind-of a mess there..

So, I just would like the starting point of what it looked like before all that.

Note, I am not asking about the time when you guys added the left turn lane there on Northbound Cawthra (left turn to go West)

I am also not asking about the bylaw that states no U-turns at that corner.

I specifically would like project details for the lane markings that were done a few times on the NorthEast side of Cawthra to the QEW East onramp

Thanks!

[REDACTED]

On Thu, Sep 13, 2018 at 1:50 PM Bubas, Sonya <[sonya.bubas@peelregion.ca](mailto:sonya.bubas@peelregion.ca)> wrote:

Hi [REDACTED]

I received your question regarding the Cawthra Road Environmental Assessment (EA). The EA is examining active transportation and intersection improvements on Cawthra Road from Eastgate Parkway to QEW. Please feel free to forward any comments or questions you may have regarding this Study.

Kind regards,

Sonya Bubas, MCIP, RPP  
Project Manager  
Infrastructure Programming and Studies  
Transportation, Public Works  
[sonya.bubas@peelregion.ca](mailto:sonya.bubas@peelregion.ca)

**From:** [REDACTED]  
**Sent:** October 15, 2018 12:50 PM  
**To:** Branko.Zivkovic@ontario.ca  
**Cc:** Cameron.Bevers@ontario.ca; Bubas, Sonya <[sonya.bubas@peelregion.ca](mailto:sonya.bubas@peelregion.ca)>  
**Subject:** Re: QEW and Cawthra Rd

Thanks for checking into this for me everyone...

[REDACTED]

On Mon, Oct 15, 2018 at 12:25 PM Zivkovic, Branko (MTO) <[Branko.Zivkovic@ontario.ca](mailto:Branko.Zivkovic@ontario.ca)> wrote:

Dear [REDACTED]

Thank you for your email of September 13, 2018 regarding your inquiry about the lane arrangement / pavement markings at the intersection of Cawthra Road & South Service Road. Your inquiry was forwarded to the ministry by staff at the Region of Peel.

The following is the feedback I received from the ministry's Planning & Design Office regarding your inquiry about any historic revisions to the pavement markings:

"I can confirm that all final pavement markings were restored to pre-construction conditions once the bridge rehab at Cawthra Road was completed under C2015-2017. No permanent changes were made to the pavement markings at this location. I should also note that P&D did not receive any requests/concerns by the City of Mississauga, Region of Peel or MTO Traffic Office regarding the existing pavement marking layout during design. As far as I know, this lane arrangement has been in place since the current Cawthra Road Interchange was built in 1979."

As part of any future planning projects within this section of the QEW, the ministry will review traffic operations at the Cawthra Road interchange and implement improvements, if required.

Sincerely,

**Branko Zivkovic**



**Traffic Supervisor** (Peel & Halton)  
Ministry of Transportation, Ontario  
Central Region, Traffic Office  
6th Floor  
159 Sir William Hearst Avenue  
Toronto, Ontario  
M3M 0B7  
Tel. 416-235-5598  
Fax. 416-235-4097  
E-mail: [Branko.Zivkovic@ontario.ca](mailto:Branko.Zivkovic@ontario.ca)

**From:** [REDACTED]  
**Sent:** September 13, 2018 2:02 PM  
**To:** Bubas, Sonya  
**Subject:** Re: Fw: Cawthra & QEW - info?

It's about this intersection, and onramp, which is South of the QEW



I would like the details on the few construction projects that happened with respect to lane markings right there over the last few years.

There was work done, and I'd like to get the 'before and after' lane markings info.. Then a short time later, there was additional work done, and I'd like the before&after info for that particular job as well.

As it stands right now, it is unsafe, as people coming northbound on Cawthra in the right hand lane, FREQUENTLY, change lanes in the intersection INTO the right-hand turning lane for people off south service rd..

Now, I get that the right-turners have a red, but a distinct stop at the line, and rolling into the presumably open lane has almost got me smoked a few times.... And I have sat to watch and it's kind-of a mess there..

So, I just would like the starting point of what it looked like before all that.

Note, I am not asking about the time when you guys added the left turn lane there on Northbound Cawthra (left turn to go West)

I am also not asking about the bylaw that states no U-turns at that corner.

I specifically would like project details for the lane markings that were done a few times on the NorthEast side of Cawthra to the QEW East onramp

Thanks!





## Dela Cruz, Gino

---

**From:** [REDACTED]  
**Sent:** August 26, 2016 7:37 AM  
**To:** Dela Cruz, Gino  
**Subject:** File #15-4380- [REDACTED]

Good morning Gino

I live at [REDACTED] which backs on to Cawthra Road just north of Bloor St.

I received your notice of EA. About 2 ½ years or so ago I met people as well as the then Councillor for the area in regards to noise levels from the traffic on Cawthra Rd . A metre was placed in my backyard and it was determined that the noise levels warranted for me and my 2 neighbours a sound barrier fence. I received estimates from Peel Region which were ridiculous as in my job I know the costing of such work. I built what is approximately the same wood sound barrier fence and it has cut levels down, my neighbour on the south side is doing the same within the next month or so.

What I would like is some sound deflection to be considered in our area even if it is simple bushes/cedars that are taller than our 6 ft fences to help with this as you are now doing the EA  
Also if you could bring up at your meeting if Peel Police will be there is the need to monitor trucks after 7pm as there is still quite a lot of truck traffic which I believe is not allowed.

I hope you can in some way assist us with the noise levels. As you know traffic volumes keep increasing and we would appreciate something to assist in the noise levels we are experiencing.

Thanks and I look forward to your reply,

[REDACTED]

**From:**  
**Sent:** November 29, 2019 11:16 AM  
**To:** Bubas, Sonya <sonya.bubas@peelregion.ca>  
**Subject:** Cawthra Road Environmental Assessment Study

Please see attached letter concerning the Cawthra Road from Queen Elizabeth Wat to Eastgate Parkway, Mississauga Environmental Assessment Study.

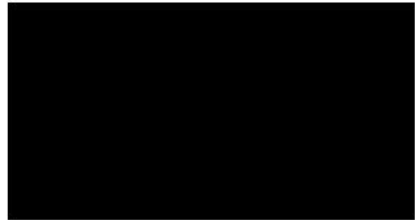
[REDACTED]

[REDACTED]  
[REDACTED]  
[REDACTED]

CONFIDENTIALITY: This e-mail message (including attachments, if any) is confidential and is intended only for the addressee. Any unauthorized use or disclosure is strictly prohibited. Disclosure of this e-mail to anyone other than the intended addressee does not constitute waiver of privilege. If you have received this communication in error, please notify us immediately and delete this email. Thank you for your cooperation.

Visit our website for information about our ministry or follow us on Facebook





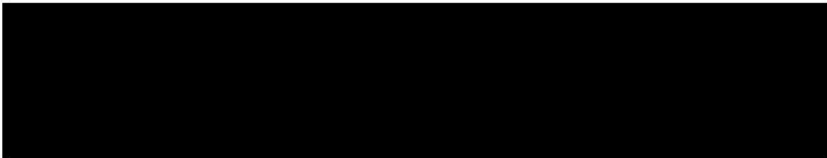
November 29, 2019


**Deliver by email**  
**Sonya.bubas@peelregion.ca**

Sonya Bubas  
Project Manager  
Infrastructure Programming and Studies  
Region of Peel, Public Works  
10 Peel Centre Drive, Suite B  
Brampton, ON L6T 4B9

Dear Ms. Bubas,

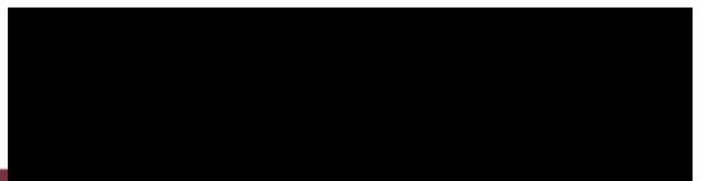
**Re:**



 is the registered owner of the above referenced property. After our attendance at your November 27, 2019 Public Information Centre we would like to highlight the following concerns:

- Mount Peace Cemetery has graves in very close proximity to the property line that is marked by a chain link fence. The fence cannot be moved into the property from its current location which is immediately adjacent to the existing side walk. On numerous occasions side walk snow plows have damaged the existing fence. At the very least the side walk must remain where it is or be moved further away from the existing chain link fence.
- Traffic patterns in the cemetery typically have vehicles entering in the gate at the center of the property and exiting at the north side of the property. Current conditions have limited sightlines to traffic coming south on Cawthra Road. This lack of sightlines should be taken into consideration for any bike lane that might be constructed on the west side of Cawthra Road.

If you have any questions or concerns in this regard, please feel free to contact me.



**From:** Maraj, Kelly

**Sent:** March 23, 2020 2:37 PM

**To:** [REDACTED]

**Cc:** Allan Ortlieb <Allan.Ortlieb@IBIGroup.com>; Saddi, Asha <Asha.Saddi@peelregion.ca>; Lee, Arthur <arthur.lee@peelregion.ca>; Bubas, Sonya <sonya.bubas@peelregion.ca>

**Subject:** Cawthra Road Environmental Assessment - response to letter

Hello [REDACTED]

Thank you for letter dated November 29<sup>th</sup>, 2019 regarding the Cawthra Road Environmental Assessment. Please find attached a letter addressing the comments you raised.

If you have any further questions or comments please don't hesitate to email Sonya Bubas, Project Manager, at [sonya.bubas@peelregion.ca](mailto:sonya.bubas@peelregion.ca).

Regards,

*Asha Saddi, BA(Hons), PMP*  
*Technical Analyst, Infrastructure Programming & Studies*  
*Transportation Division*  
*Public Works, Region of Peel*  
*Tel: 905-791-7800 x7794*  
*Fax: 905-791-1442*  
[Asha.Saddi@peelregion.ca](mailto:Asha.Saddi@peelregion.ca)





March 23, 2020  
Project No. 15-4380

**Public Works**

10 Peel Centre Dr.  
Suite B  
Brampton, ON  
L6T 4B9  
tel: 905-791-7800

peelregion.ca

[REDACTED]

Dear [REDACTED]

**RE:** [REDACTED]

**Cawthra Road, Mississauga Environmental Assessment Study**

Thank you for attending the Public Information Centre on November 27, and for your letter dated November 29, 2019 regarding the Cawthra Road Environmental Assessment (EA) Study. The Project Team has reviewed your comments and offer the following response.

The proposed road design maintains the existing sidewalk location at Mount Peace Cemetery and shifts the road alignment at this location approximately 2.5m to the east to accommodate for new active transportation infrastructure on both sides of Cawthra Road while avoiding impacts to the Cemetery. Additionally, the alignment shift will introduce a new 1.0m splashpad behind the curb for snow storage.

With the road alignment shifted to the east, south of Santee Gate, drivers exiting the Cemetery should have improved sightlines of southbound vehicles at a further distance. However, it is important that the vegetation and chain link fence on private property is well maintained so that these features do not obstruct the view for drivers, pedestrians and cyclists approaching the entrance.

Further, your comments regarding damage to the chain link fence have been forwarded to the City of Mississauga.

We trust this letter has addressed your comments. If you have any questions or additional comments, please feel free to contact me at 905-791-7800, extension 7801, or [sonya.bubas@peelregion.ca](mailto:sonya.bubas@peelregion.ca).

**Public Works**

10 Peel Centre Dr.  
Suite B  
Brampton, ON  
L6T 4B9  
tel: 905-791-7800

[peelregion.ca](http://peelregion.ca)

Sincerely,



Sonya Bubas, MCIP, RPP  
Project Manager  
Infrastructure Programming and Studies  
Transportation Division, Public Works

cc: Allan Ortlieb, Project Manager, IBI Group  
Asha Saddi, Technical Analyst, Region of Peel  
Arthur Lee, Senior Designer, Region of Peel