

NOTICE OF PUBLIC INFORMATION CENTRE NO. 2 AIRPORT ROAD FROM KING STREET TO HUNTSMILL DRIVE, TOWN OF CALEDON MUNICIPAL CLASS ENVIRONMENTAL ASSESSMENT STUDY

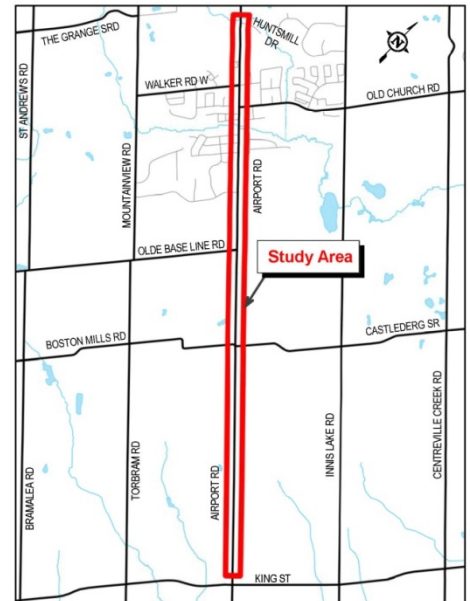
The Region of Peel is conducting a Class Environmental Assessment (EA) Study for Airport Road from 100m north of King Street to 300m north of Huntsmill Drive in the Town of Caledon (see map). The purpose of the Study is to:

- Address long term issues related to planned future growth,
- Enhance the safety of the Airport Road corridor by examining intersection improvements, potential for roundabouts and traffic calming measures for truck and other vehicular traffic through Caledon East, and
- Promote infrastructure improvements to facilitate walking and cycling.

The Study is being conducted in compliance with Schedule 'C' of the Municipal Class Environmental Assessment (Municipal Engineers Association, as amended in 2015), which is approved under the *Ontario Environmental Assessment Act*.

PUBLIC INFORMATION CENTRE NO. 2

Due to the current COVID-19 guidelines, the Public Information Centre (PIC) will be held in an online format to present the evaluation of alternative design concepts and recommended preliminary design.



To have questions answered and provide input/comments you can:

- **Join the live online presentation on September 23 from 6 p.m. to 8 p.m.** to hear more about the project and ask questions. Information on how to join the Presentation will be provided on the Project Website.
- **Visit the Project Website from September 17 to October 14** to review project details:
<http://www.peelregion.ca/pw/transportation/envirom-assess/airport-road-improvements.htm>
- **Provide your feedback by October 14, 2020.** Share your comments during the live session on September 23 and complete the online Survey and/or Comment Sheet in the link above. You can also email your comments to the Project Team members listed below.

The Project Team will review and consider the feedback received at the PIC and confirm the recommended preliminary design. An Environmental Study Report (ESR) will be prepared to document the planning, consultation and design process. The ESR will be made available for public review for a minimum of 30 calendar days.

If you have any questions or comments on the Study, please contact either of the following Project Team members:

Sonya Bubas, MCIP, RPP
Project Manager
Region of Peel
10 Peel Centre Drive, Suite B, 4th Floor
Brampton, ON L6T 4B9
Tel: 905-791-7800 ext. 7801
Email: sonya.bubas@peelregion.ca

Asha Saddi, BA(Hons), PMP
Technical Analyst
Region of Peel
10 Peel Centre Drive, Suite B, 4th Floor
Brampton, ON L6T 4B9
Tel: 905-791-7800 ext. 7794
Email: asha.saddi@peelregion.ca

The Region of Peel is committed to ensure that all Regional services, programs and facilities are inclusive and accessible for persons with disabilities. Please contact the Project Manager if you need any disability accommodation to participate in the study.

Information will be collected in accordance with the *Municipal Freedom of Information and Protection of Privacy Act*. With the exception of personal information, all comments will become part of the public record

Construction statement regarding COVID-19

Critical infrastructure construction is an essential service. We're keeping employees, contractors and the community safe by complying with [provincial guidelines](#), physical distancing, using personal protective equipment, and adjusting work schedules and shifts.

Construction project updates can be found at peelregion.ca/construction.

Follow [Peel Public Works on Twitter](#) for service updates and changes.

This notice was first issued on September 10, 2020