

LEGEND

- Short Duration Road Closure
- - - Short Duration Detour Route
Starting April 2024, 4-6 weeks
- Phase 2 Road Closure
- - - Phase 2 Detour Route
May 2024 - Early 2025

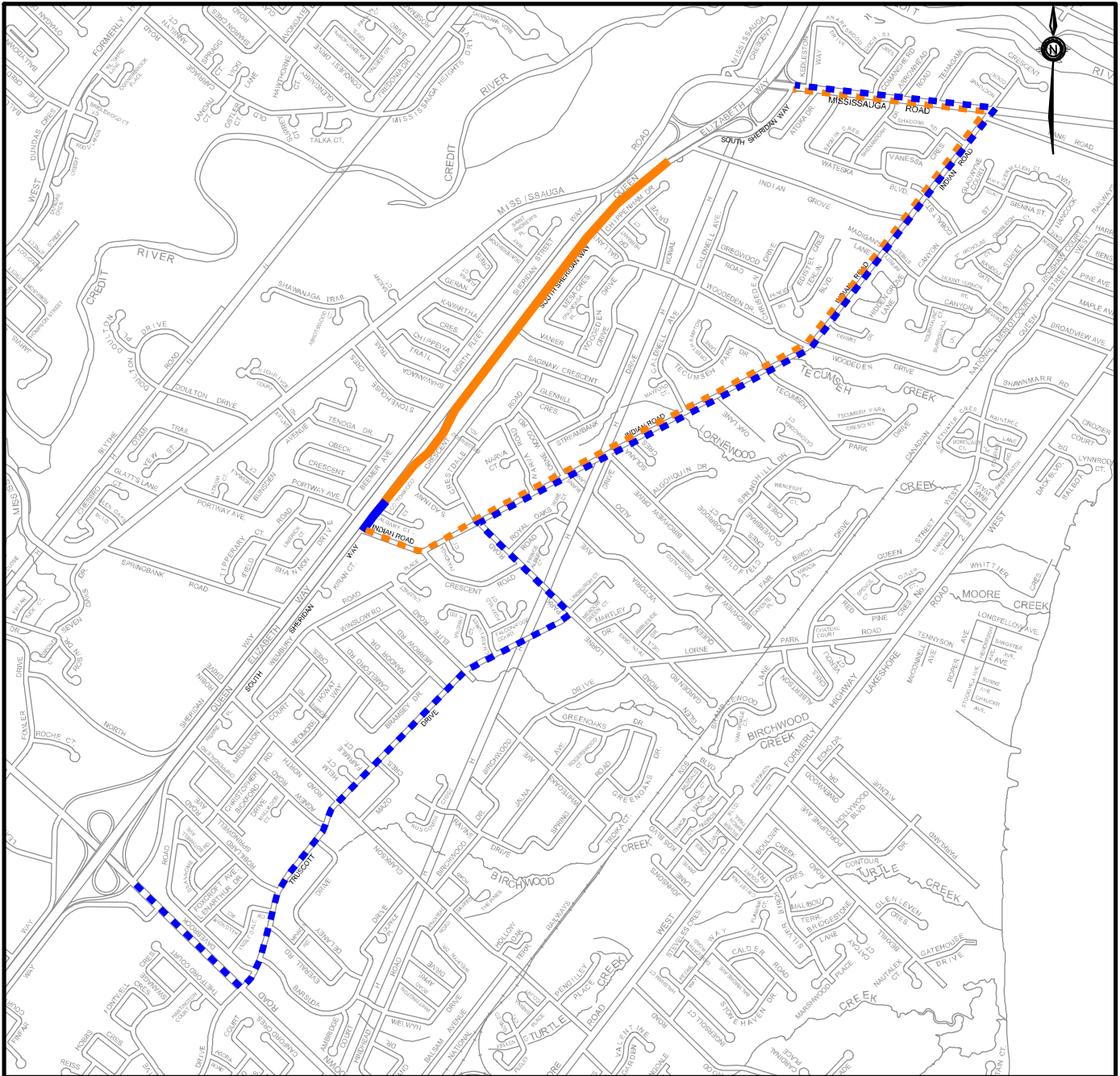


PROJECT 13-1347H3

SOUTH SHERIDAN WAY

WARD 2

PHONE: 905-791-7800 EXT: 4409
EMAIL: construction@peelregion.ca



PUBLIC WORKS
10 PEEL CENTRE DRIVE - SUITE A, 4TH FLOOR, BRAMPTON ON L6T 4B9 (905) 791-7800