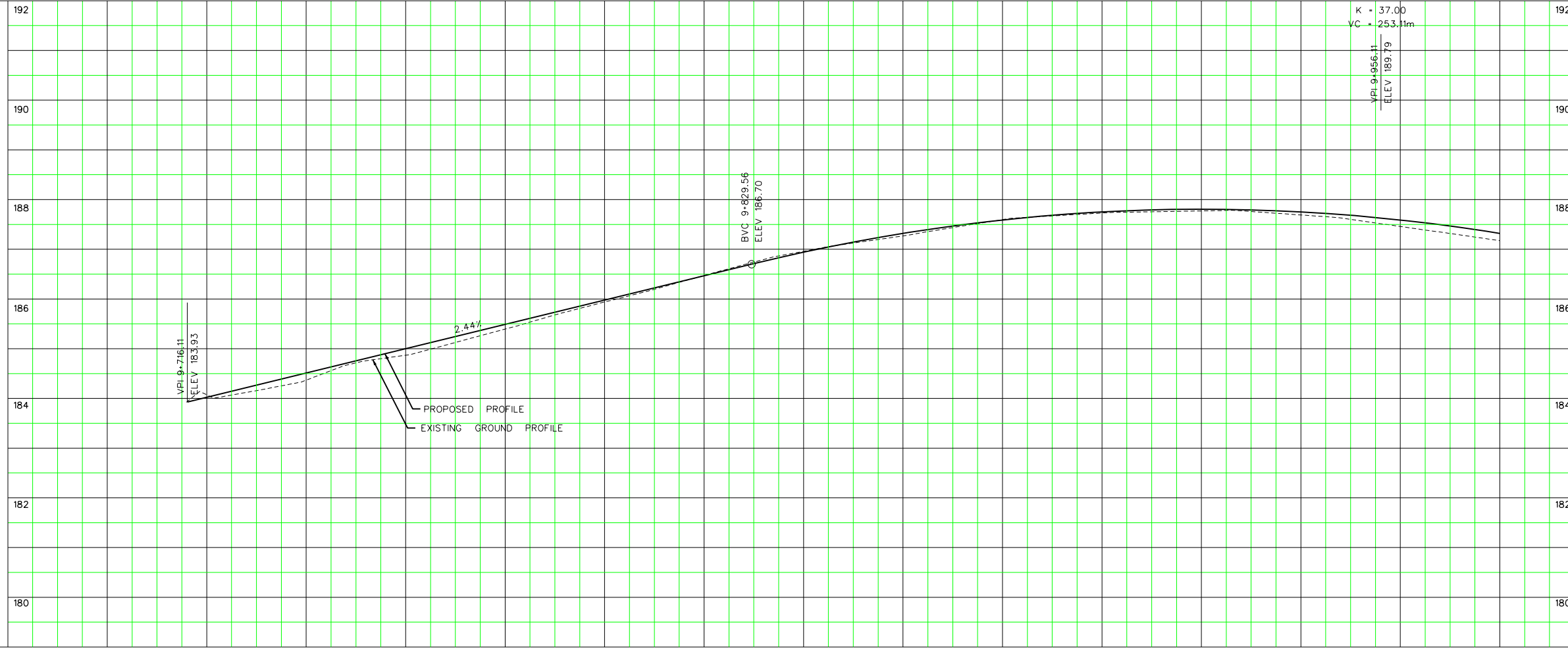
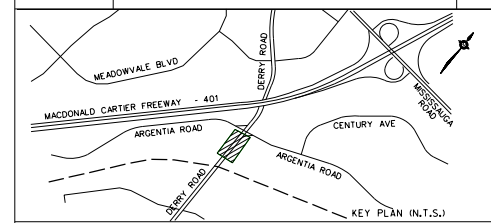


SERVICE DATA					
SERVICE	DATE	INIT.	SERVICE	DATE	INIT.
SAN SEWERS			GAS MAINS		
STORM SEWERS			BELL U/G CABLE		
WATERMANS			HYDRO U/G CABLE		
TRANSIT			CTV		
PARKS & REC.			COMMUNIC. CABLES		
ONT. CLEAN WATER					

REVISIONS		
DATE	DETAILS	INIT.



**General Notes**

- All Driveways ASPHALT Unless Otherwise Noted.
- All Service Locations Are Approximate And Must Be Located Accurately In The Field
- ⊙ Denotes Building - Not Located
- ⊞ Denotes Building Located
- Type 'B' Bedding Unless Otherwise Noted (S&N)

B.M. No.      Elev.

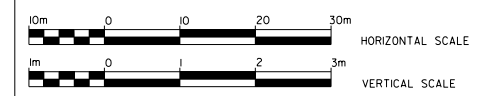
The Contractor Is Responsible For Locating And Protecting All Existing Utilities Prior To And During Construction Location of Existing Utilities Approximate Only, To Be Verified In Field By Contractor.

Designed by \_\_\_\_\_ Chkd. \_\_\_\_\_

Approved by \_\_\_\_\_

**NOTICE TO CONTRACTOR**  
48 HOURS PRIOR TO COMMENCING WORK NOTIFY THE FOLLOWING:

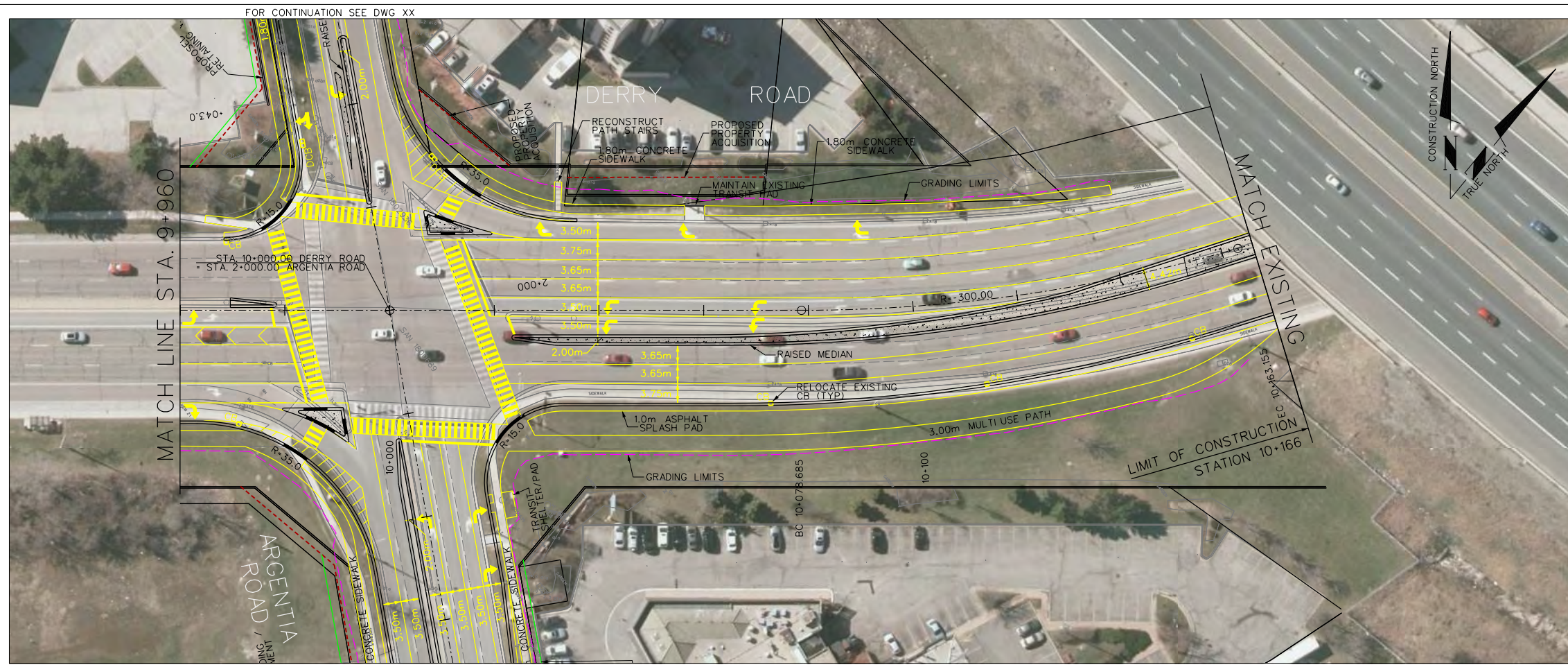
THE REGIONAL MUNICIPALITY OF PEEL	CABLE TELEVISION/FIBROPTIC PROVIDERS:
CITY OF MISSISSAUGA WORKS DEPT.	BELL CANADA
CITY OF BRAMPTON WORKS DEPT.	ENERSOURCE TELECOM
TOWN OF CALEDON WORKS DEPT.	HYDRO ONE TELECOM
BELL CANADA	ROGERS CABLE
ENBRIDGE INCORPORATED-GAS DISTRIBUTION	ALLSTREAM
ONTARIO MINISTRY OF TRANSPORTATION	PSN (PUBLIC SECTOR NETWORK)
ONTARIO CLEAN WATER AGENCY	FUTUREWAY (FCI/BROADBAND)
HYDRO ONE NETWORKS	
ENERSOURCE, HYDRO MISSISSAUGA	
HYDRO ONE BRAMPTON	



**DERRY ROAD**  
STA. 9+720 TO STA. 9+960  
**NEW CONSTRUCTION**

9+700	184.07	184.37	184.87	185.40	185.94	186.47	186.96	187.27	187.60	187.73	187.77	187.69	187.46	BOT. EL. OF WM.	CAD Area	Area X-X	Project No. XX-XXX
														EX. ROAD ELEV.	Checked by	Drawn by JM	Plan No.
														ROAD CHAINAGE	Date OCTOBER, 2014	Sheet 1 of 4	-D

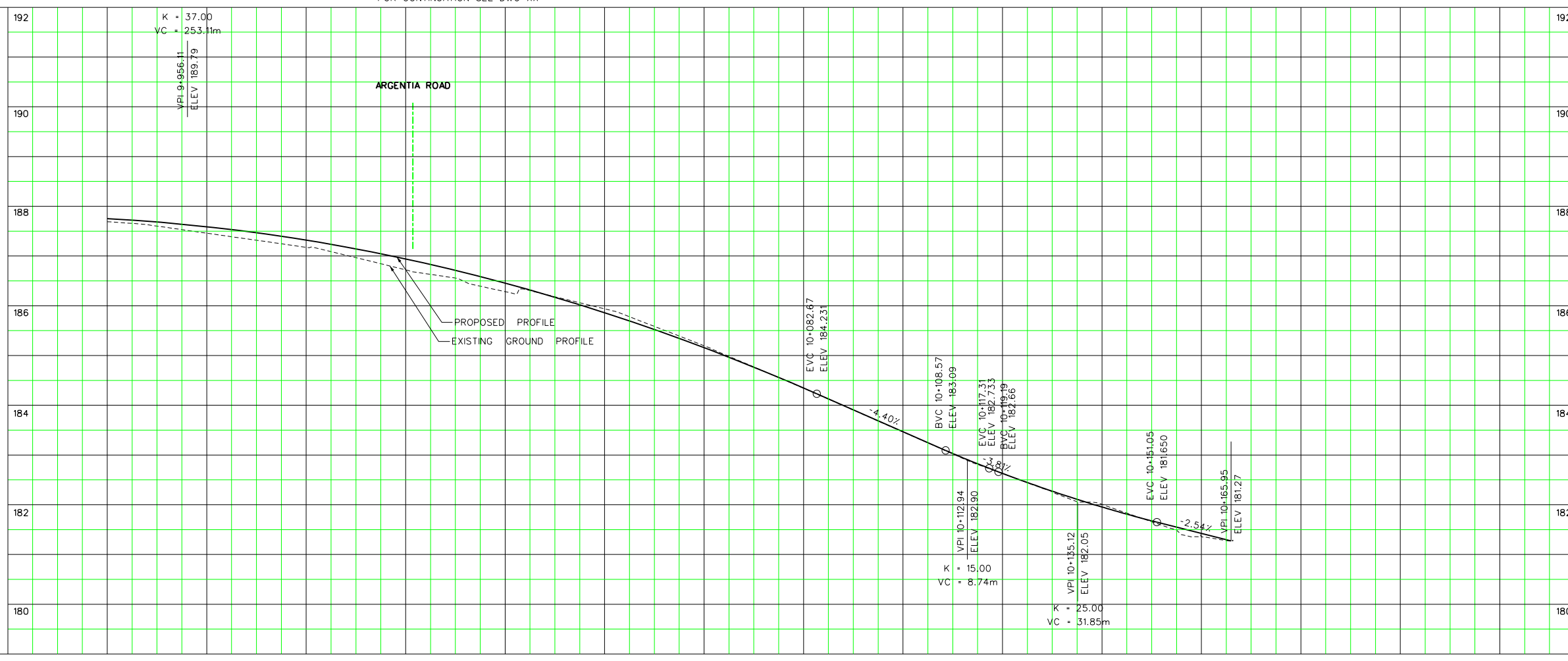




SERVICE DATA					
SERVICE	DATE	INIT.	SERVICE	DATE	INIT.
SAN SEWERS			GAS MAINS		
STORM SEWERS			BELL U/G CABLE		
WATERMANS			HYDRO U/G CABLE		
TRANSIT			HYDRO ONE		
PARKS & REC.			CTV		
ONT. CLEAN WATER			COMMUNIC. CABLES		

REVISIONS		
DATE	DETAILS	INIT.

**General Notes**

- All Driveways ASPHALT Unless Otherwise Noted.
- All Service Locations Are Approximate And Must Be Located Accurately In The Field
- ⊙ Denotes Building - Not Located
- ⊞ Denotes Building Located
- Type 'B' Bedding Unless Otherwise Noted (S&N)

B.M. No.      Elev.

The Contractor is Responsible For Locating And Protecting All Existing Utilities Prior To And During Construction Location of Existing Utilities Approximate Only, To Be Verified In Field By Contractor.

Designed by \_\_\_\_\_ Chkd. \_\_\_\_\_

Approved by \_\_\_\_\_

**NOTICE TO CONTRACTOR**  
48 HOURS PRIOR TO COMMENCING WORK NOTIFY THE FOLLOWING:

THE REGIONAL MUNICIPALITY OF PEEL	CABLE TELEVISION/FIBROPTIC PROVIDERS:
CITY OF MISSISSAUGA WORKS DEPT.	BELL CANADA
CITY OF BRAMPTON WORKS DEPT.	ENERSOURCE TELECOM
TOWN OF CALEDON WORKS DEPT.	HYDRO ONE TELECOM
BELL CANADA	ROGERS CABLE
ENBRIDGE INCORPORATED-GAS DISTRIBUTION	ALLSTREAM
ONTARIO MINISTRY OF TRANSPORTATION	PSN (PUBLIC SECTOR NETWORK)
ONTARIO CLEAN WATER AGENCY	FUTUREWAY (FCI/BROADBAND)
HYDRO ONE NETWORKS	
ENERSOURCE, HYDRO MISSISSAUGA	
HYDRO ONE BRAMPTON	

10m 0 10 20 30m HORIZONTAL SCALE

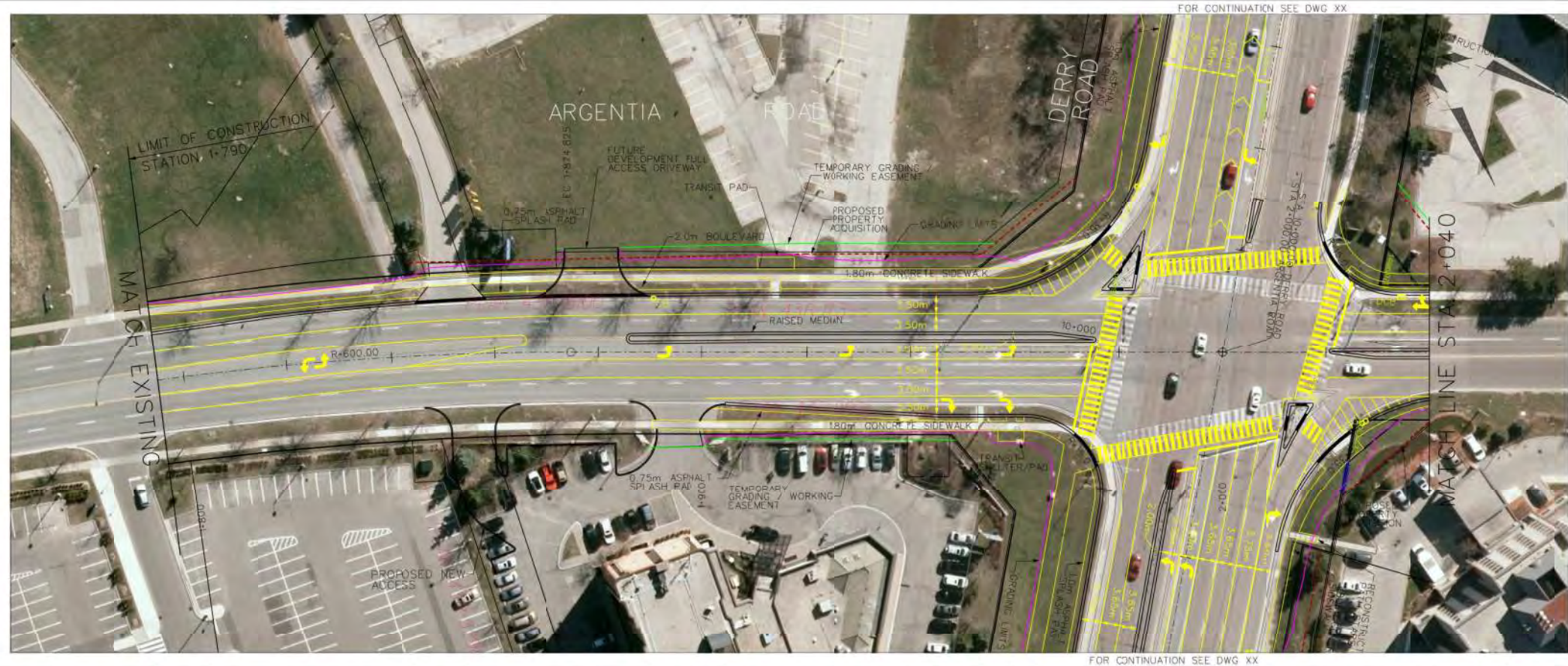
3m 0 1 2 3m VERTICAL SCALE

**Region of Peel**  
Working for you

**DERRY ROAD**  
STA. 9+960 TO STA. 10+166  
NEW CONSTRUCTION

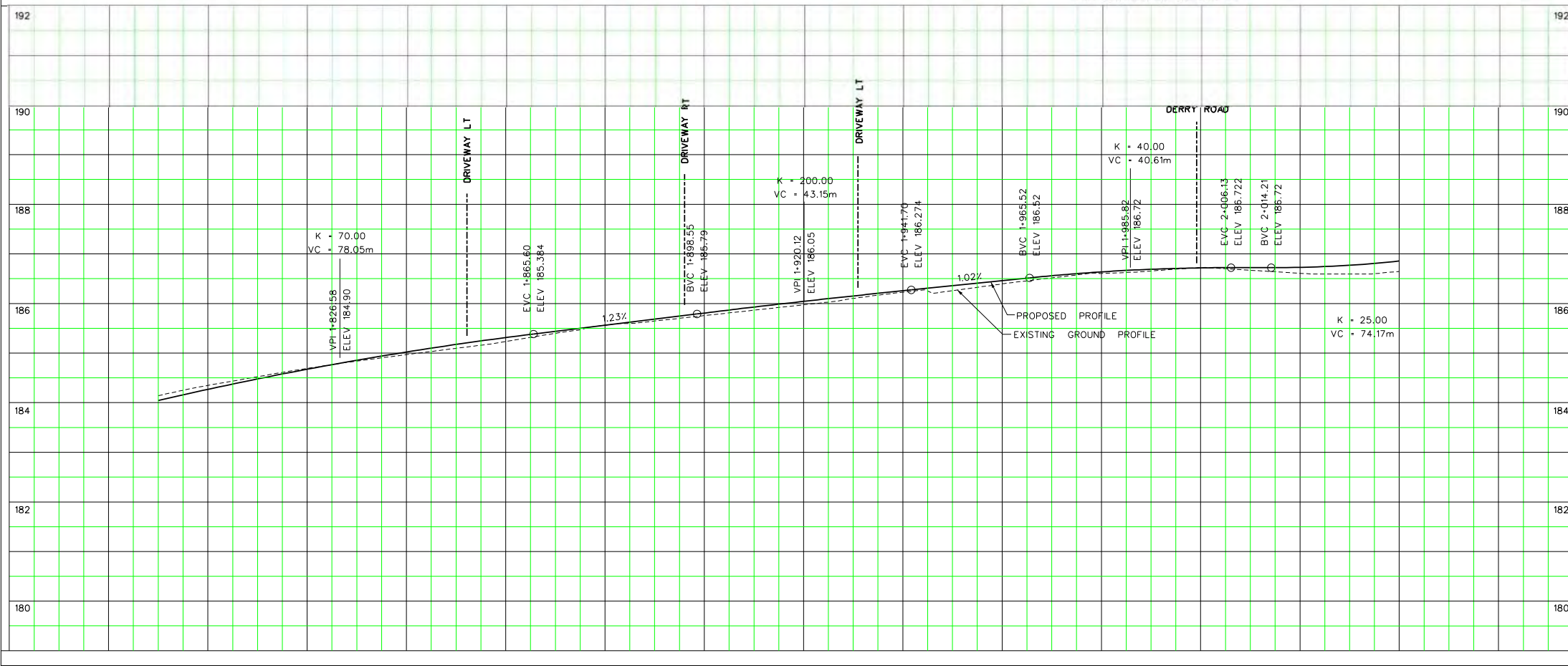
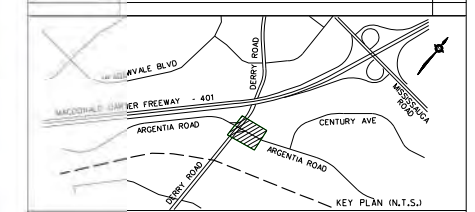
187.69	187.46	187.18	186.72	186.28	185.94	185.20	184.34	183.46	182.63	182.01	181.36	BOT. EL. OF WM.	CAD Area	Area X-X	Project No. XX-XXX
			10+000					10+100				EX. ROAD ELEV.	Checked by	Drawn by JM	Plan No.
												ROAD CHAINAGE	Date OCTOBER, 2014	Sheet 2 of 4	9-D





SERVICE DATA					
SERVICE	DATE	INIT.	SERVICE	DATE	INIT.
GAS MAINS			BELL U/G CABLE		
STORM SEWER			HYDRO U/G CABLE		
WATERMAIN			HYDRO ONE		
TRANSIT			CTV		
FIBRE & TEL			COMMUNIC. CABLES		
ONLY CLEAN WATER					

REVISIONS		
DATE	DETAILS	INIT.



**General Notes**

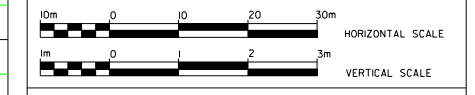
- All Driveways ASPHALT Unless Otherwise Noted.
- All Service Locations Are Approximate And Must Be Located Accurately In The Field
- Denotes Building - Not Located
- Denotes Building Located
- Type = Bedding Unless Otherwise Noted (S&N)

B.M. No. Elev.  
The Contractor is Responsible For Locating And Protecting All Existing Utilities Prior To And During Construction Location of Existing Utilities Approximate Only, To Be Verified In Field By Contractor.

Designed by: \_\_\_\_\_  
Checked by: \_\_\_\_\_  
Approved by: \_\_\_\_\_

**NOTICE TO CONTRACTOR**  
48 HOURS PRIOR TO COMMENCING WORK NOTIFY THE FOLLOWING

THE REGIONAL MUNICIPALITY OF PEEI	CABLE TELEVISION/FIBROPTIC PROVIDERS:
CITY OF MISSISSAUGA WORKS DEPT.	BELL CANADA
CITY OF BRAMPTON WORKS DEPT.	ENERSOURCE TELECOM
TOWN OF CALEDON WORKS DEPT.	HYDRO ONE TELECOM
BELL CANADA	ROGERS CABLE
ENBRIDGE INCORPORATED-GAS DISTRIBUTION	ALLSTREAM
ONTARIO MINISTRY OF TRANSPORTATION	PSN PUBLIC SECTOR NETWORK
ONTARIO CLEAN WATER AGENCY	FUTUREWAY (FCIBROADBAND)
HYDRO ONE NETWORKS	
ENERSOURCE, HYDRO MISSISSAUGA	
HYDRO ONE BRAMPTON	



**ARGENTIA ROAD**  
STA. 1+790 TO STA. 2+040  
NEW CONSTRUCTION

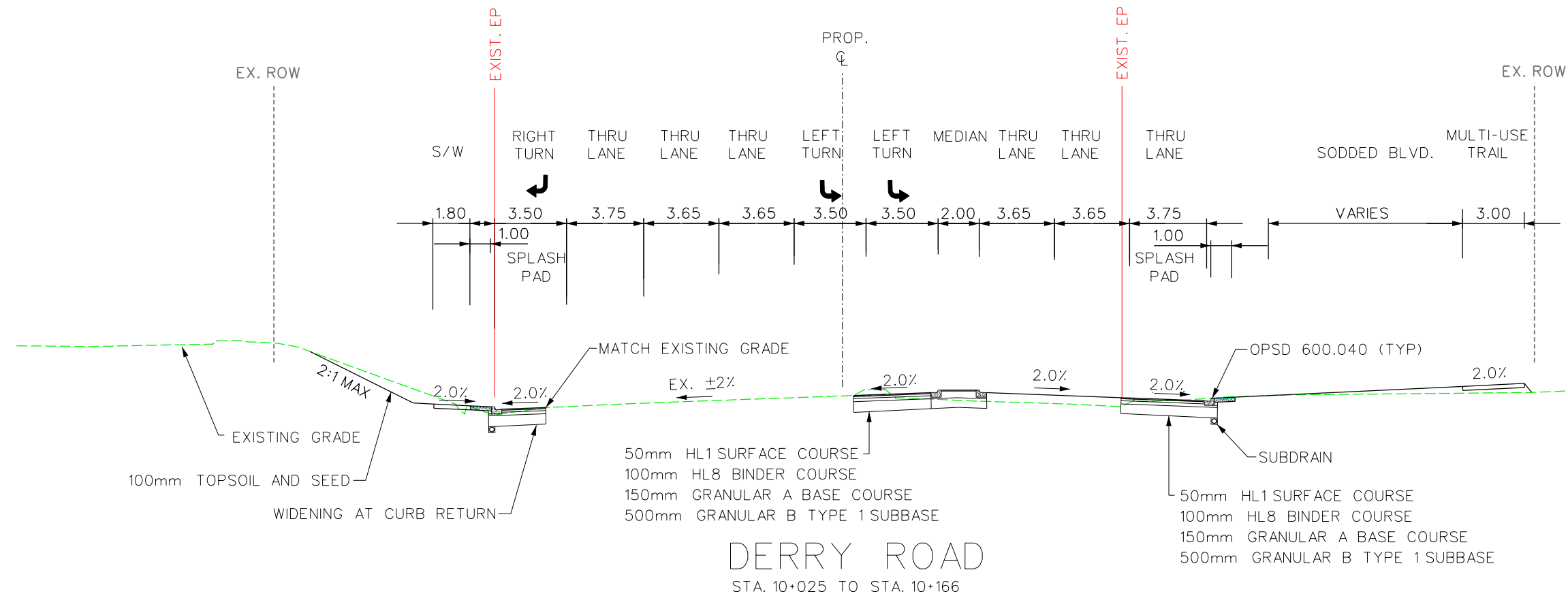
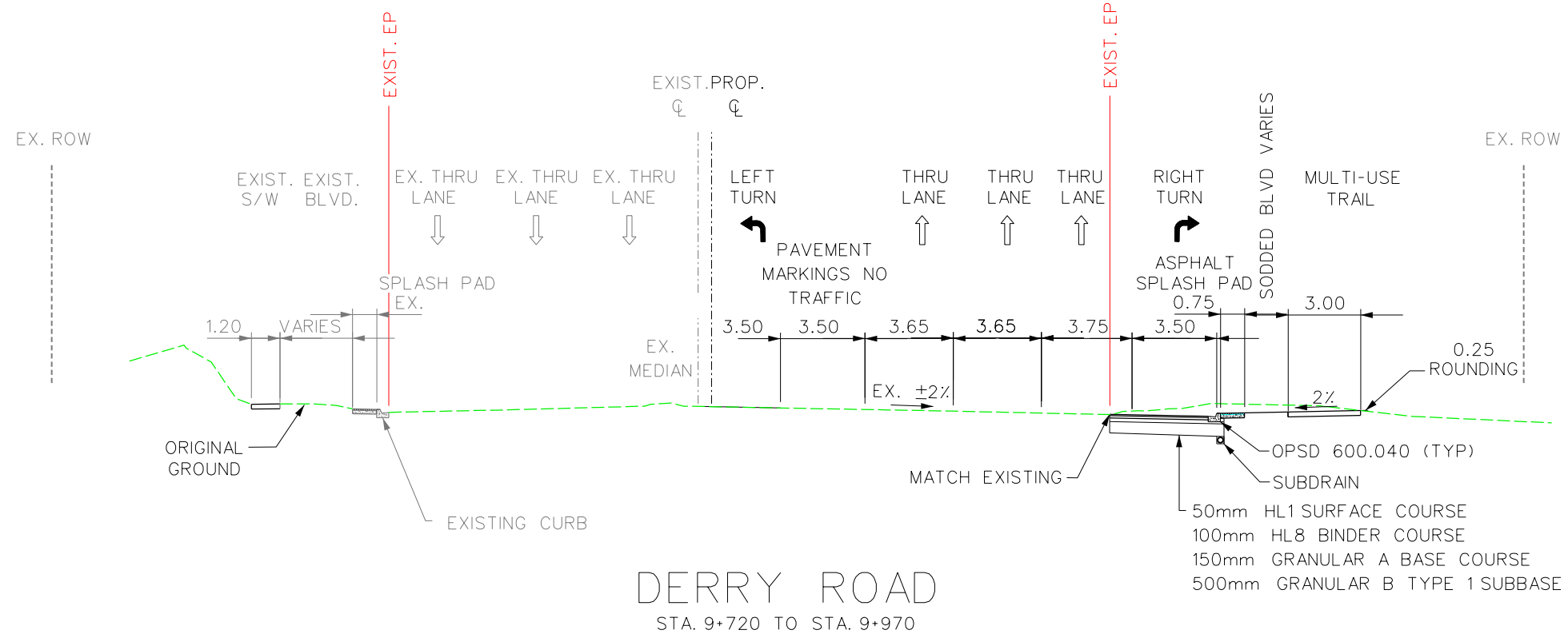
184.35	184.69	184.97	185.23	185.56	185.76	185.97	186.23	186.40	186.60	186.72	186.61	186.65	BOT. EL. OF WM.
												EX. ROAD ELEV.	
												ROAD CHAINAGE	
1:800					1:900			2:000					

CAD Area	Area X-X	Project No. XX-XXX
Checked by	Drawn by JM	Sheet 3 of 4
Date DECEMBER, 2014	Plan No.	-D





REVISIONS		
DATE	DETAILS	INIT.
		XX
		XX
		XX
		XX



Designed by _____	Checked by _____	Approved by _____
-------------------	------------------	-------------------

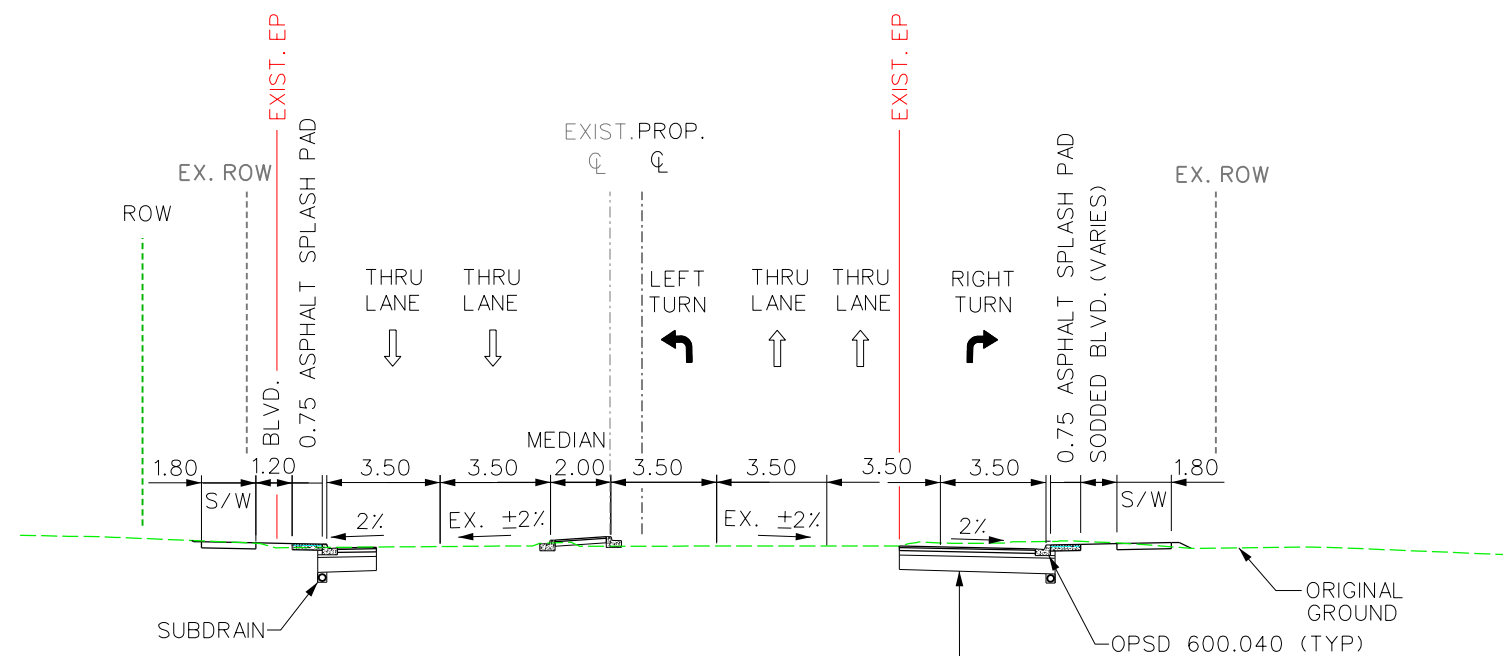
**Region of Peel**  
*Working for you*

**DERRY RD. & ARGENTIA RD.**  
**PRELIMINARY**  
**INTERSECTION DESIGN**  
**TYPICAL SECTIONS**

CAD Area	XX	Area	X-XX	Project No.	XX-XXXX
Checked by	CH	Drawn by	JM	Plan No.	11-4295
Date	OCTOBER, 2014	Sheet	1 of 2		

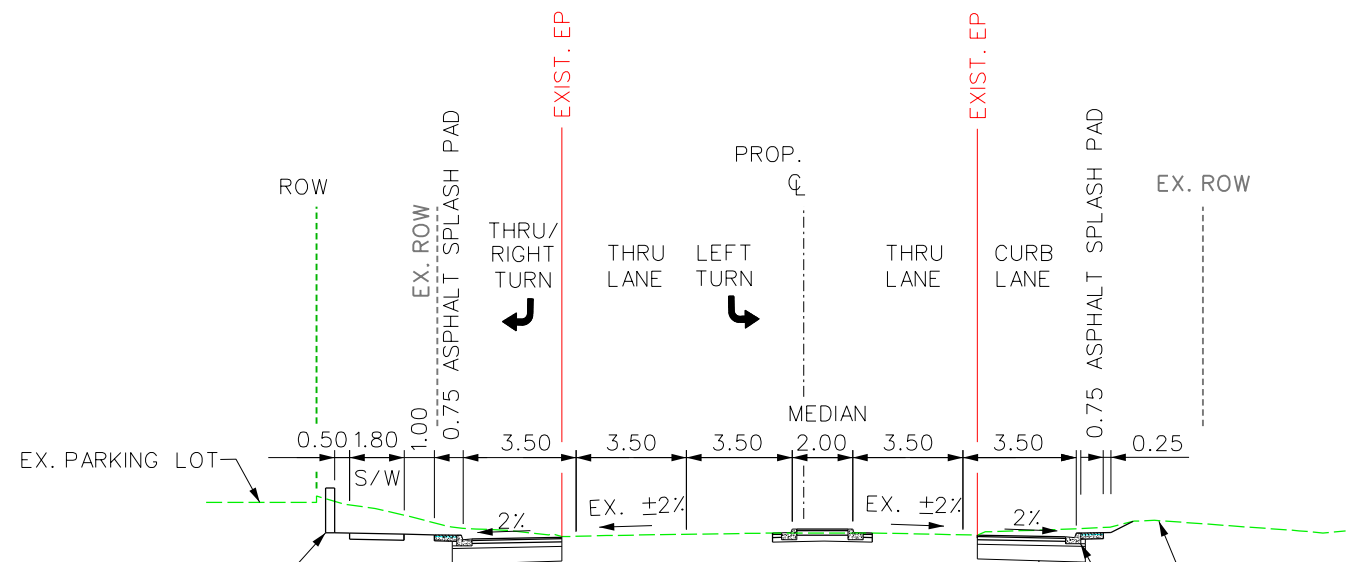
**SCALE 1:250**

REVISIONS		
DATE	DETAILS	INIT.
		XX
		XX
		XX
		XX



ARGENTIA ROAD  
STA. 1+790 TO STA. 1+975

50mm DFC SURFACE COURSE  
100mm HL8 BINDER COURSE  
150mm GRANULAR A BASE COURSE  
500mm GRANULAR B TYPE 1 SUBBASE



ARGENTIA ROAD  
STA. 2+030 TO STA. 2+280

50mm HL1 SURFACE COURSE  
100mm HL8 BINDER COURSE  
150mm GRANULAR A BASE CC  
500mm GRANULAR B TYPE 1

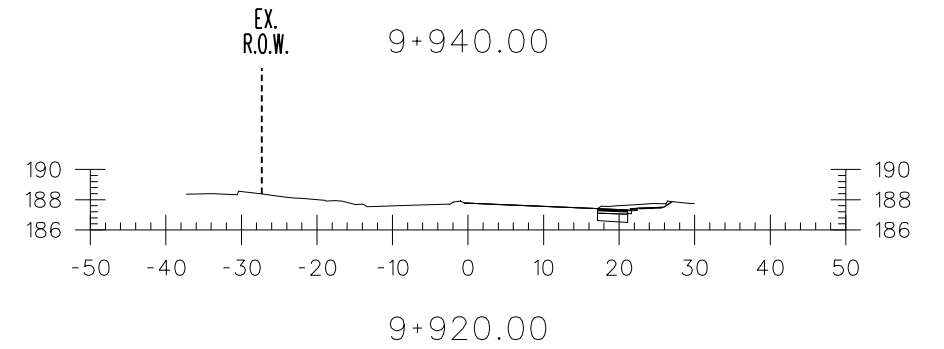
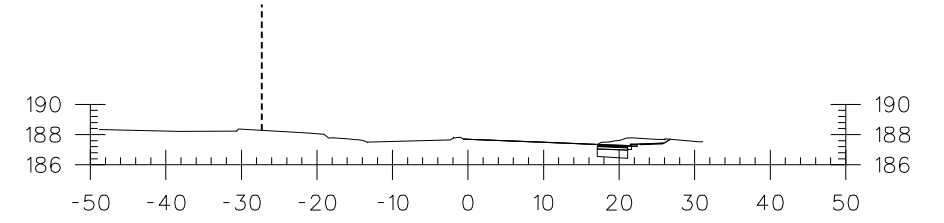
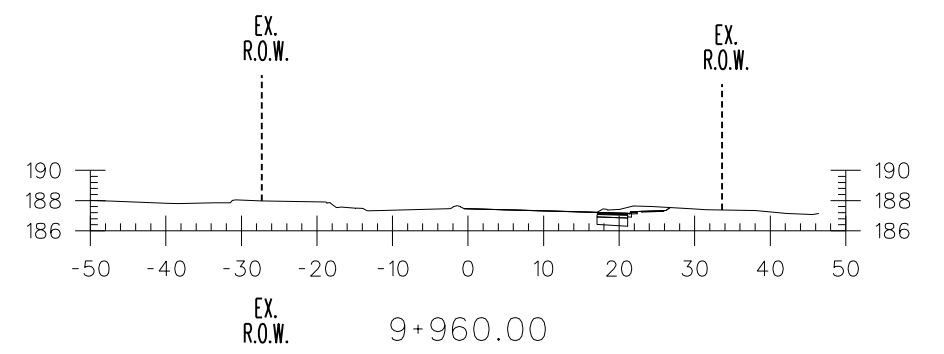
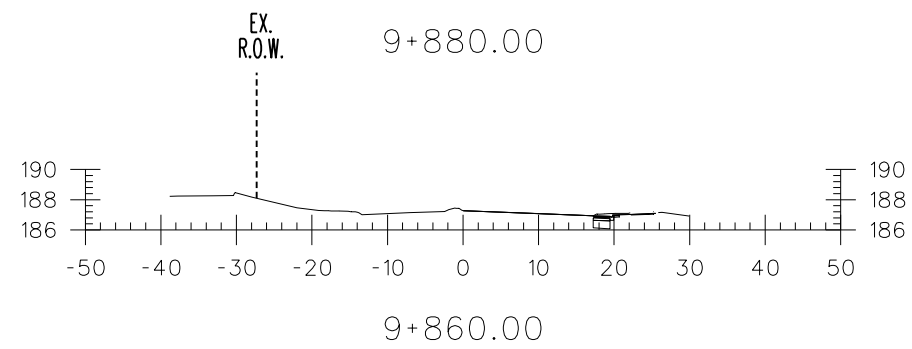
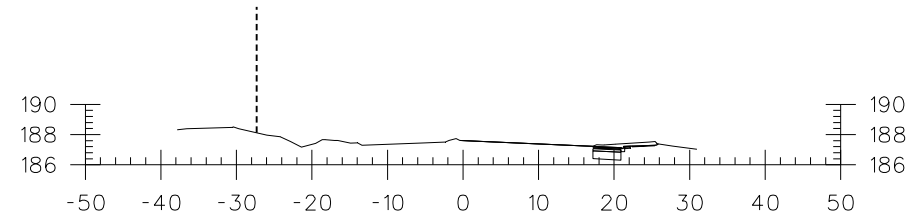
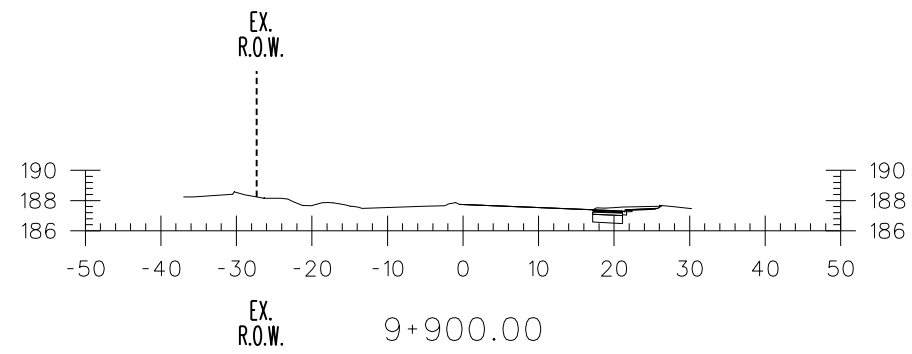
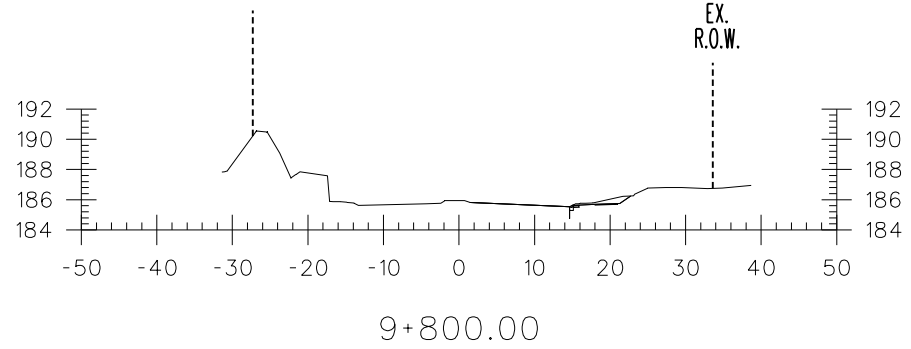
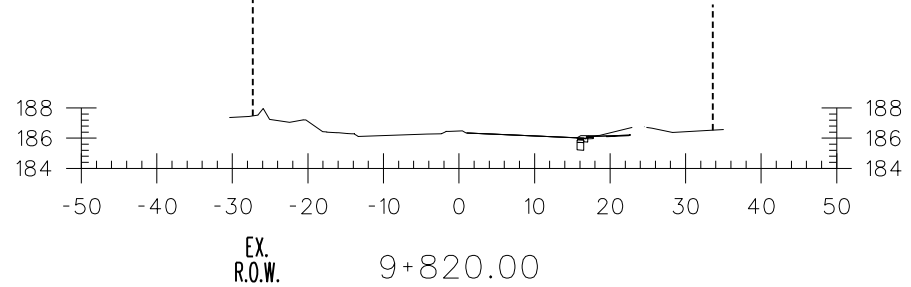
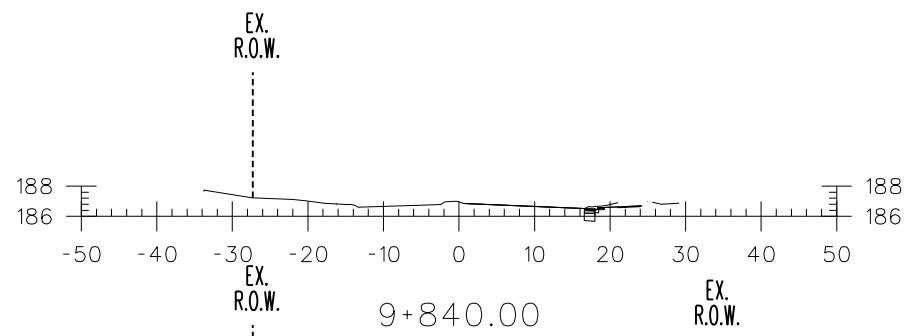
Designed by _____	Approved by _____
Checked by _____	



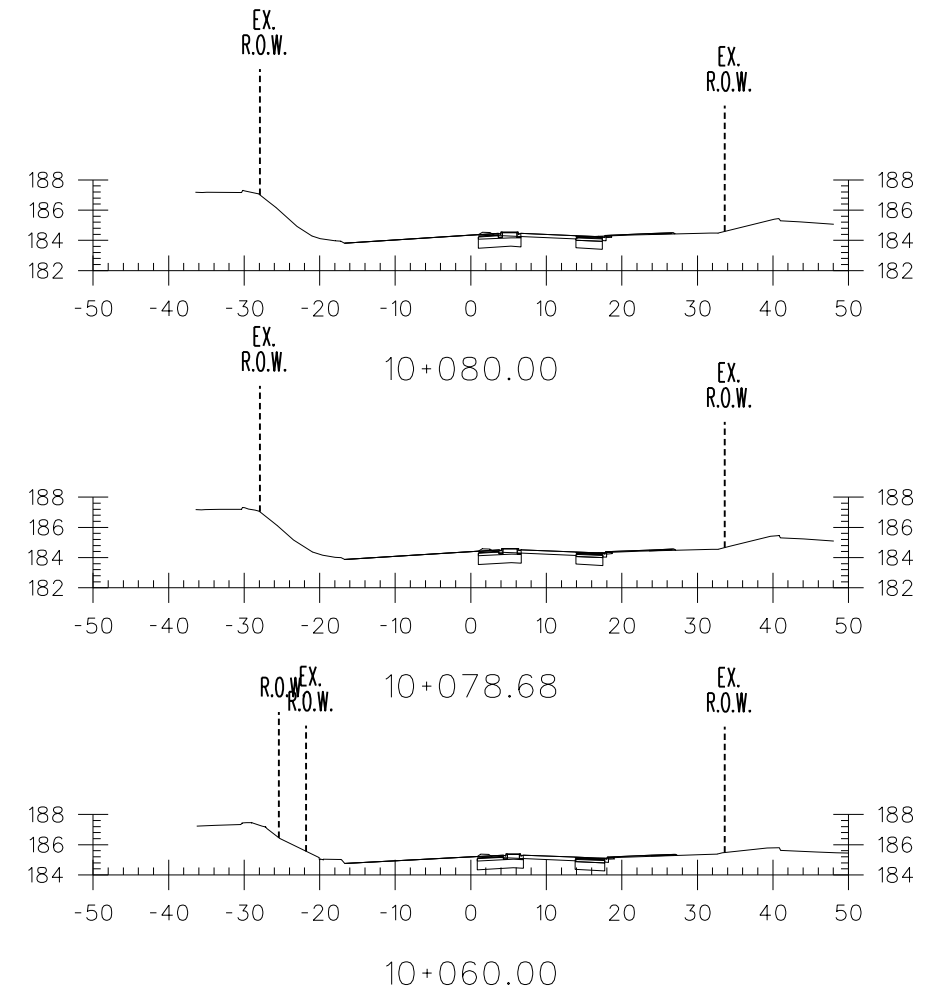
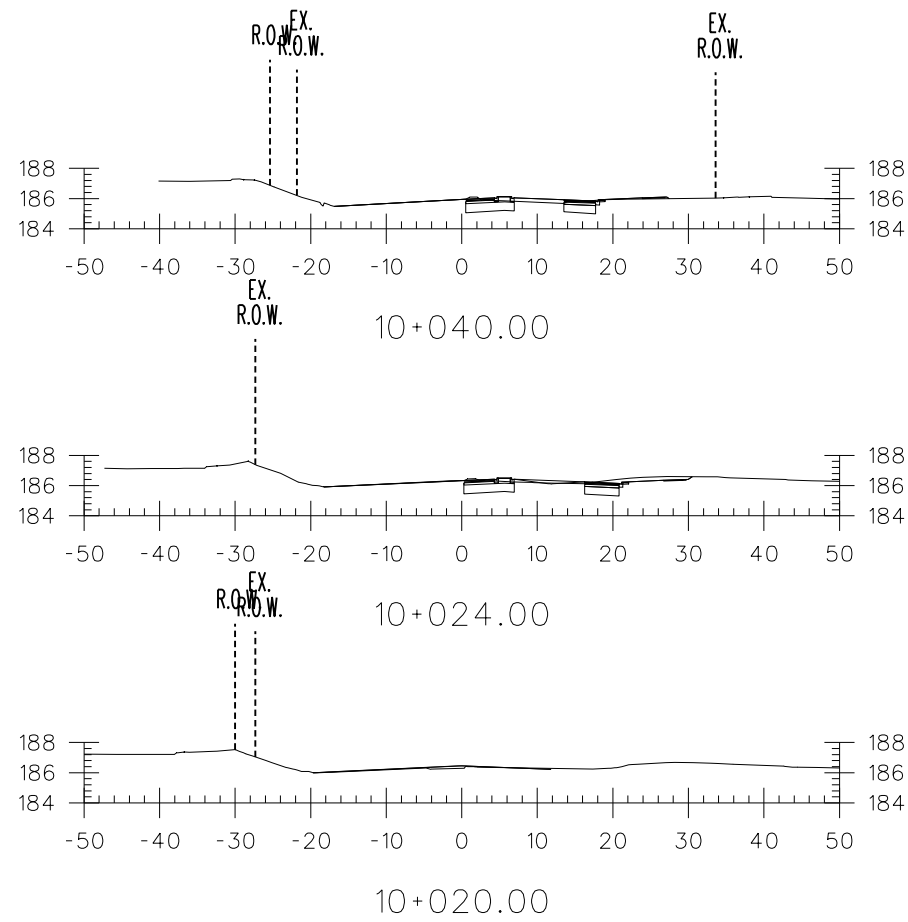
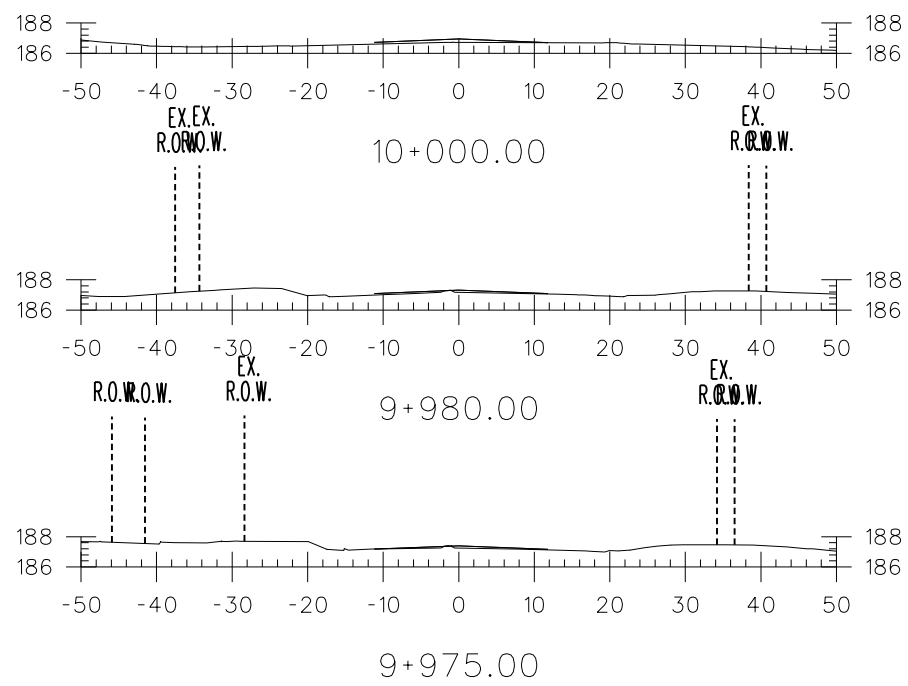
**DERRY RD. & ARGENTIA RD.  
PRELIMINARY  
INTERSECTION DESIGN  
TYPICAL SECTIONS**

CAD Area	XX	Area	X-XX	Project No.	XX-XXXX
Checked by	CH	Drawn by	JM	Plan No.	11-4296
Date	OCTOBER, 2014	Sheet	1 of 2		

SCALE 1:250

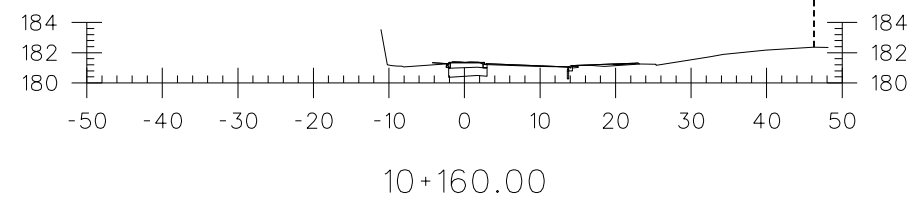
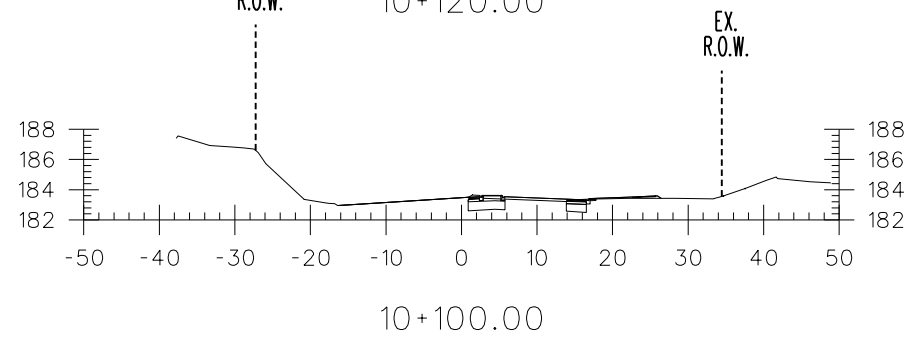
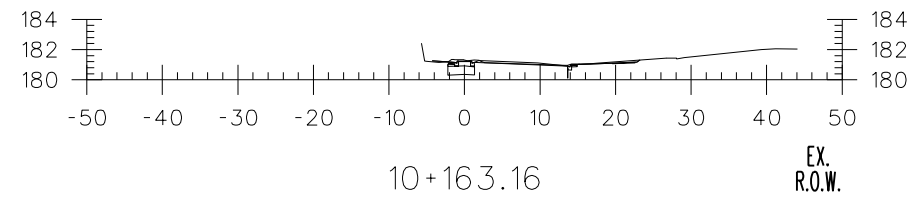
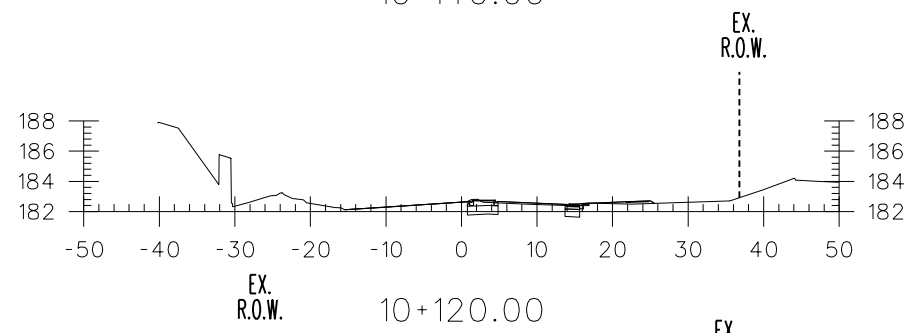
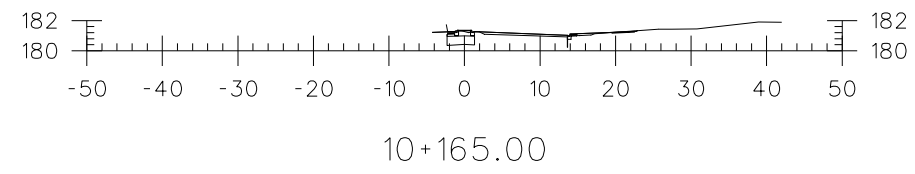
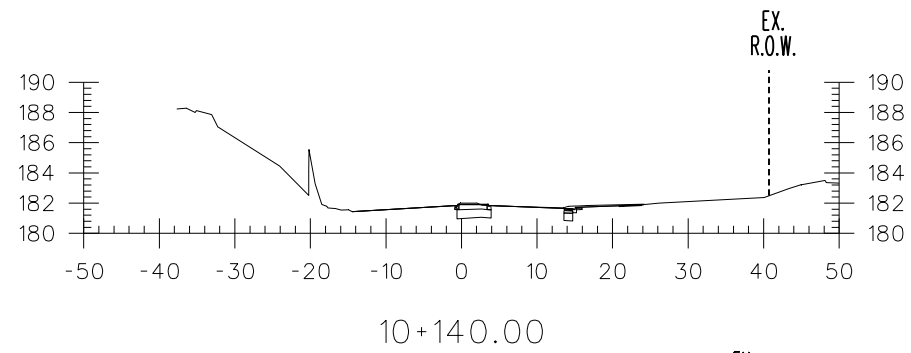


DERRY ROAD STA. 9+800 TO STA. 9+960  
 DATE: OCTOBER 2014  
 SCALE 1:250

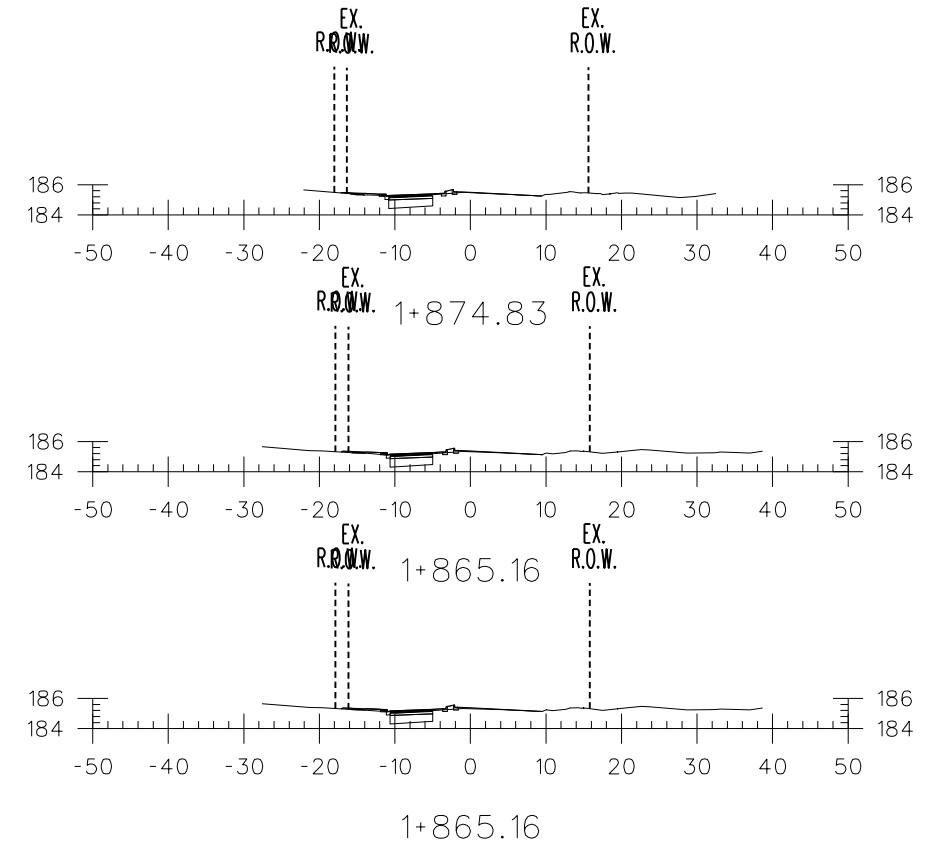
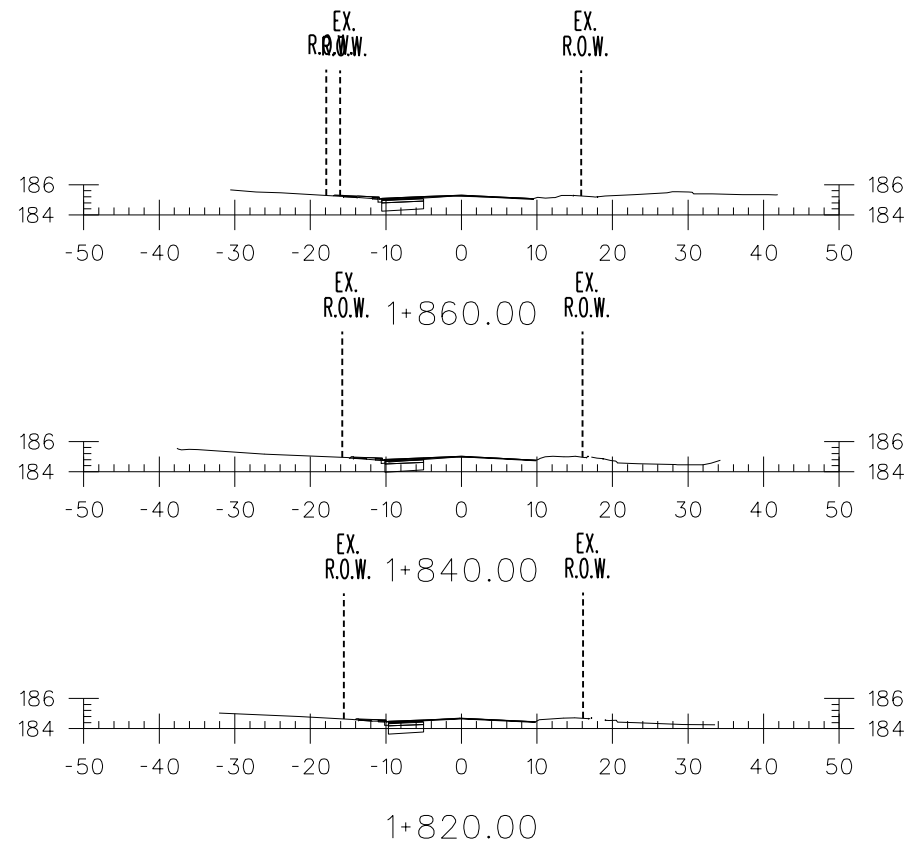
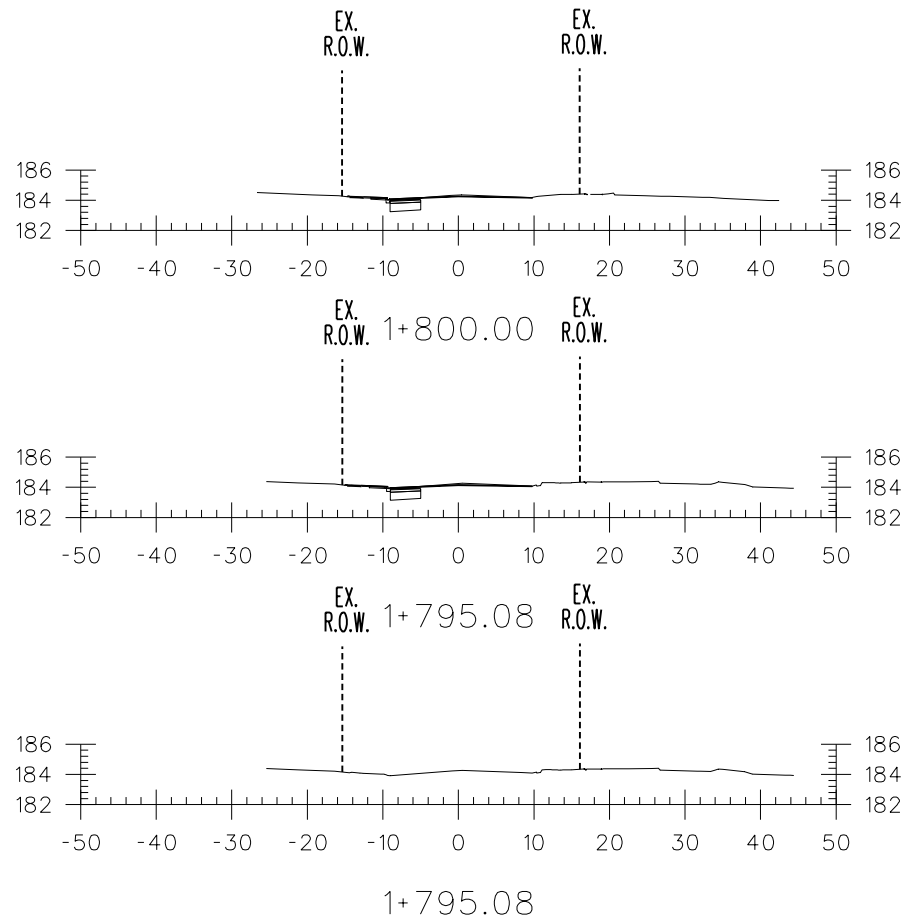


DERRY ROAD STA. 9+975 TO STA. 10+080  
 DATE: OCTOBER 2014  
 SCALE 1:250



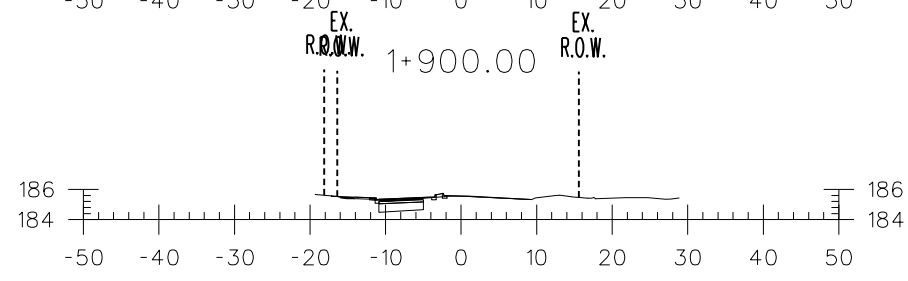
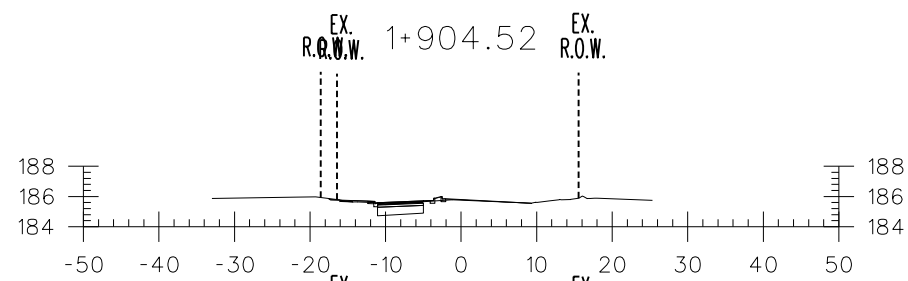
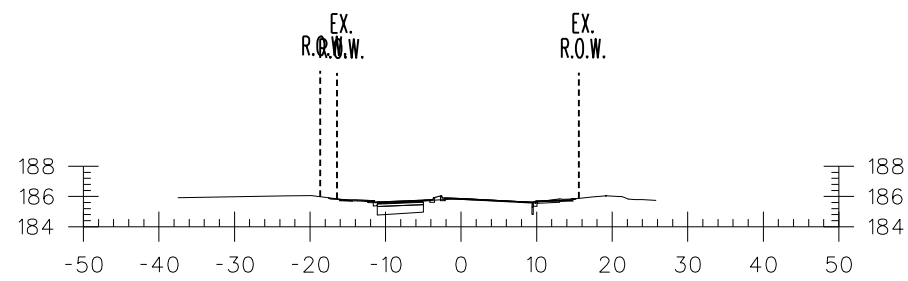


DERRY ROAD STA. 10+100 TO STA. 10+180  
 DATE: OCTOBER 2014  
 SCALE 1:250

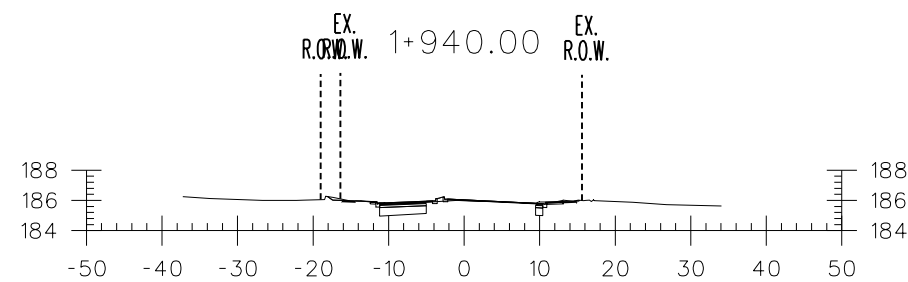
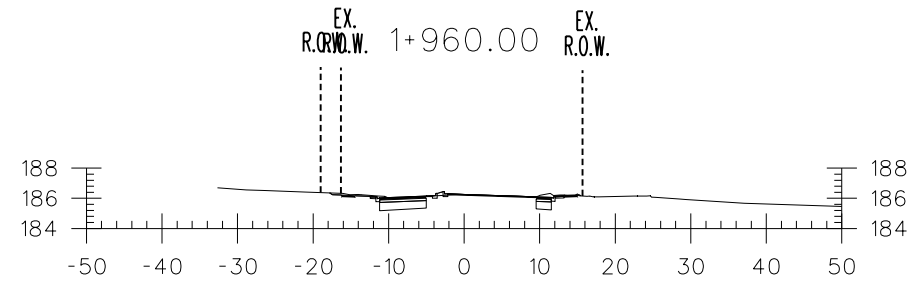
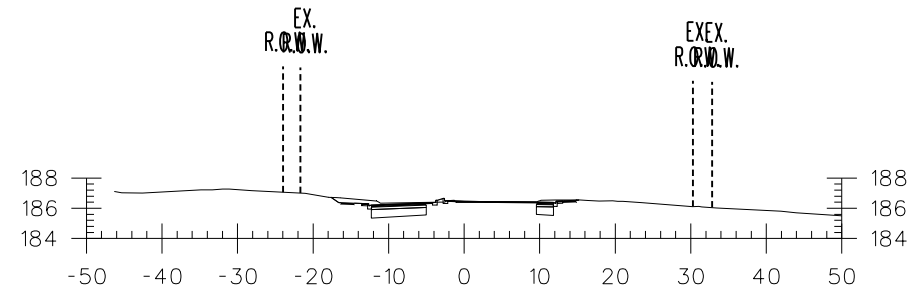


ARGENTIA ROAD STA. 1+795.08 TO STA. 1+874.83  
 DATE: OCTOBER 2014  
 SCALE 1:250

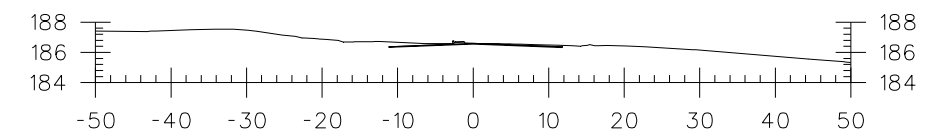
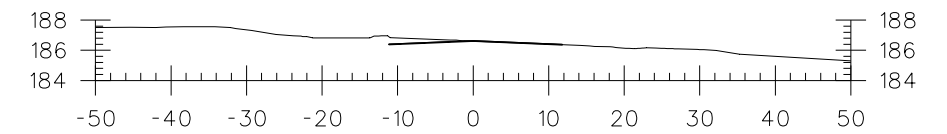
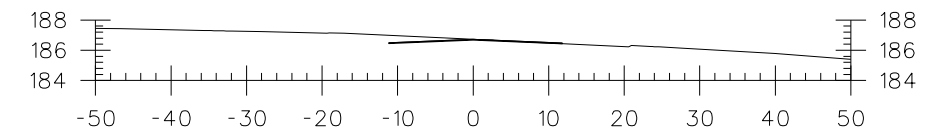




1+880.00



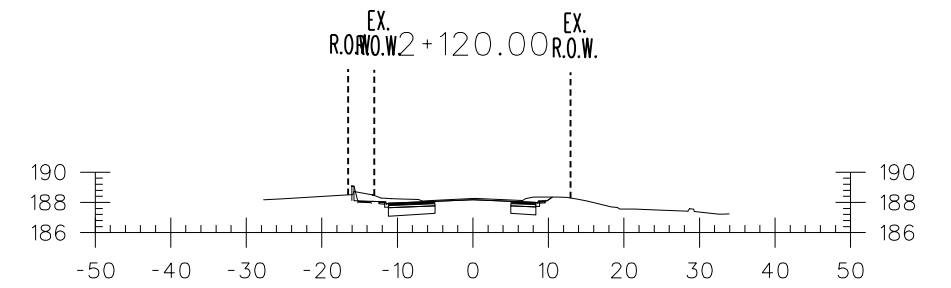
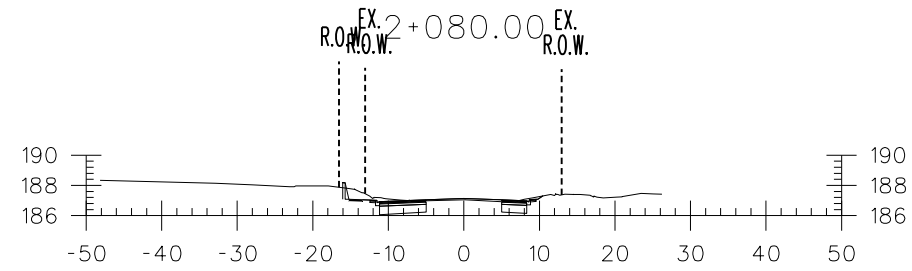
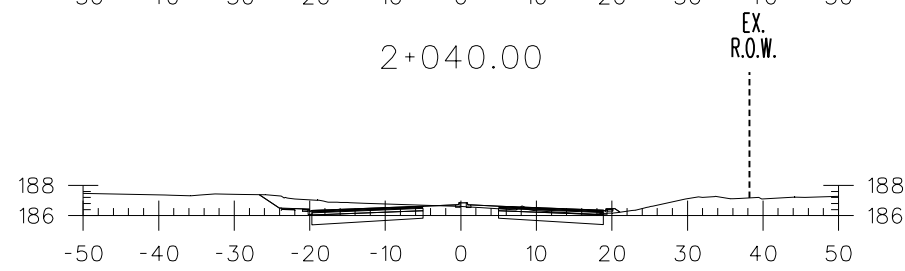
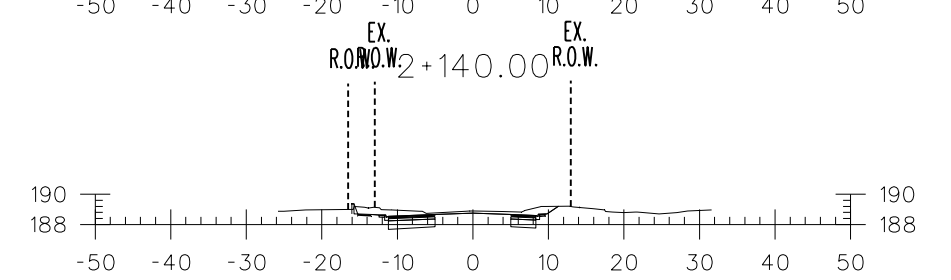
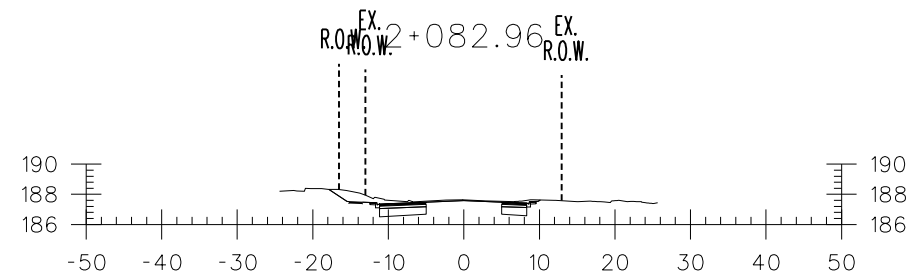
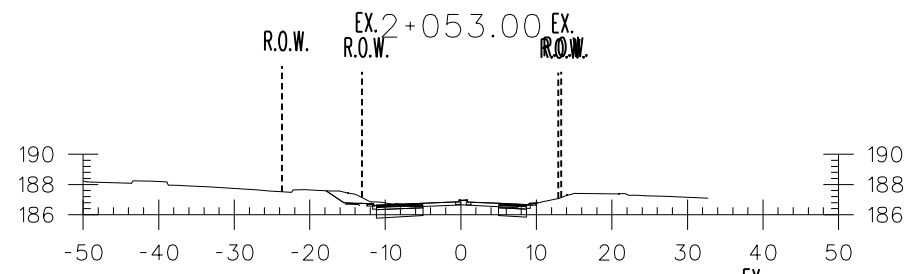
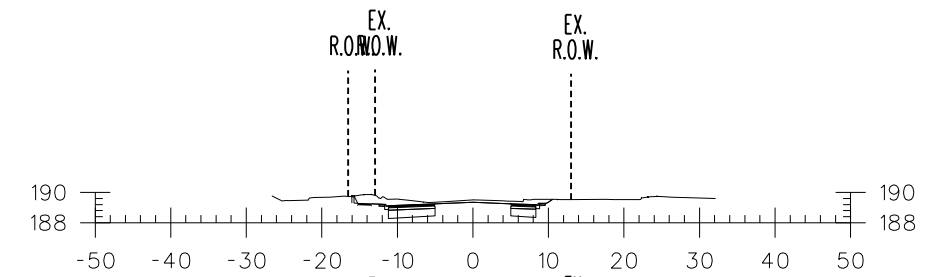
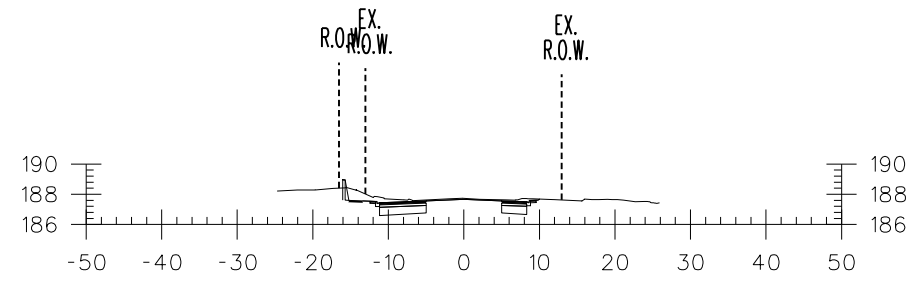
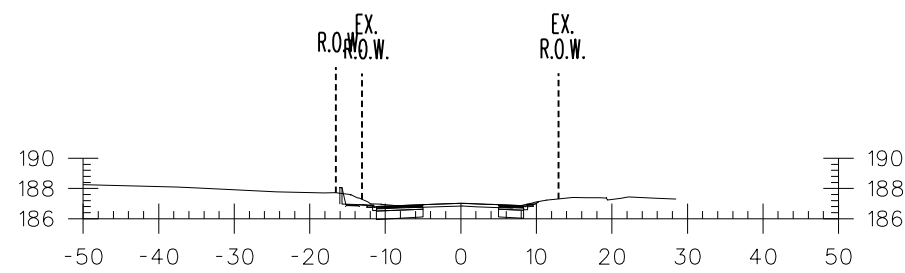
1+920.00



1+975.10

2+000.00

ARGENTIA ROAD STA. 1+880 TO STA. 2+000  
 DATE: OCTOBER 2014  
 SCALE 1:250



2+040.00

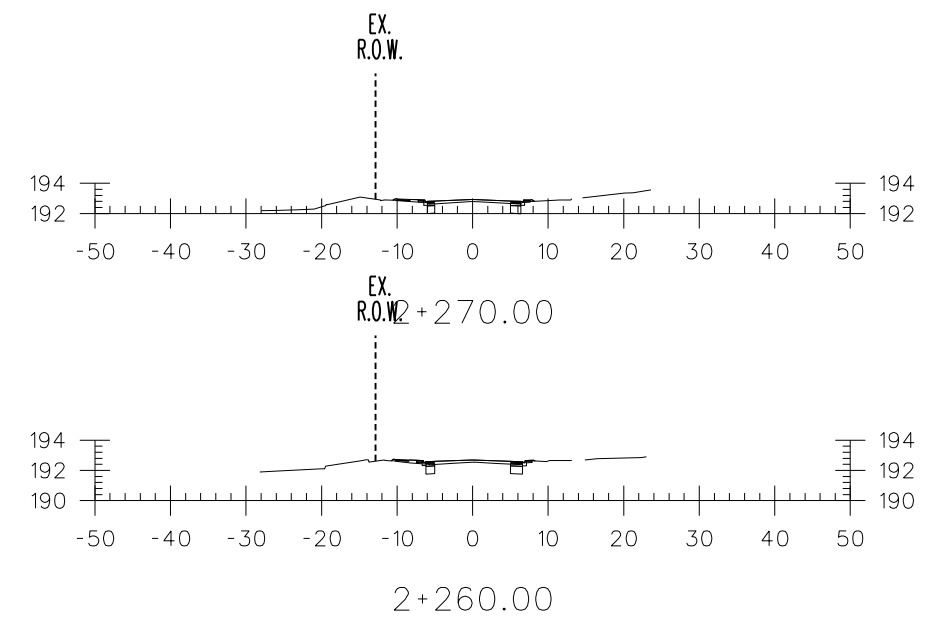
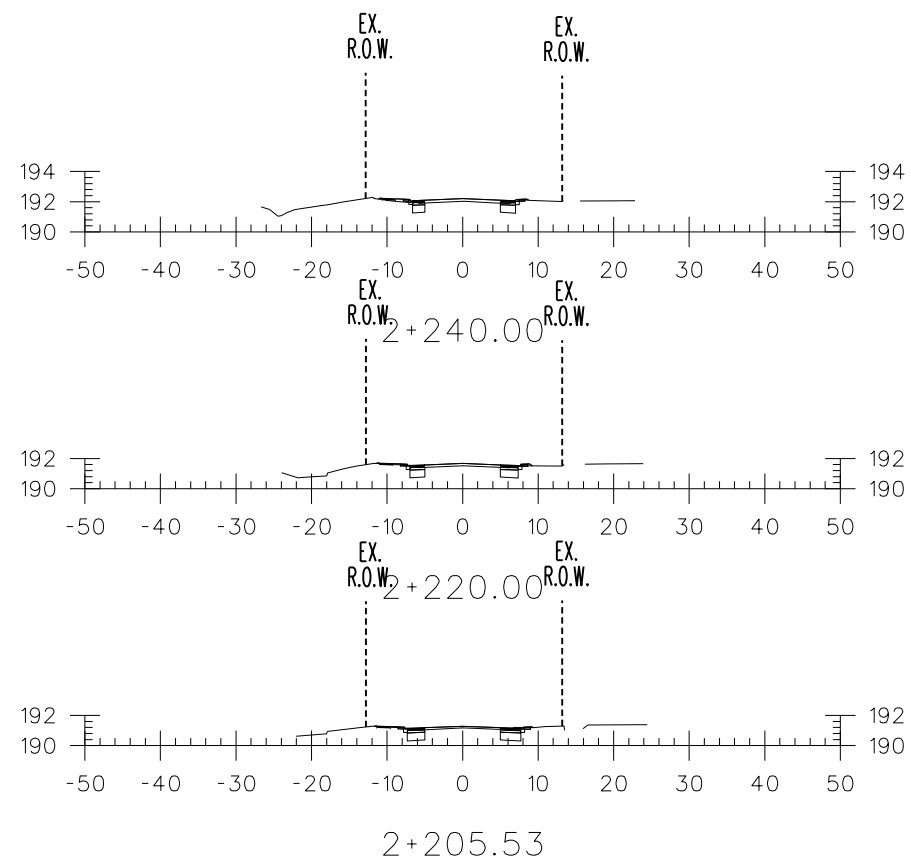
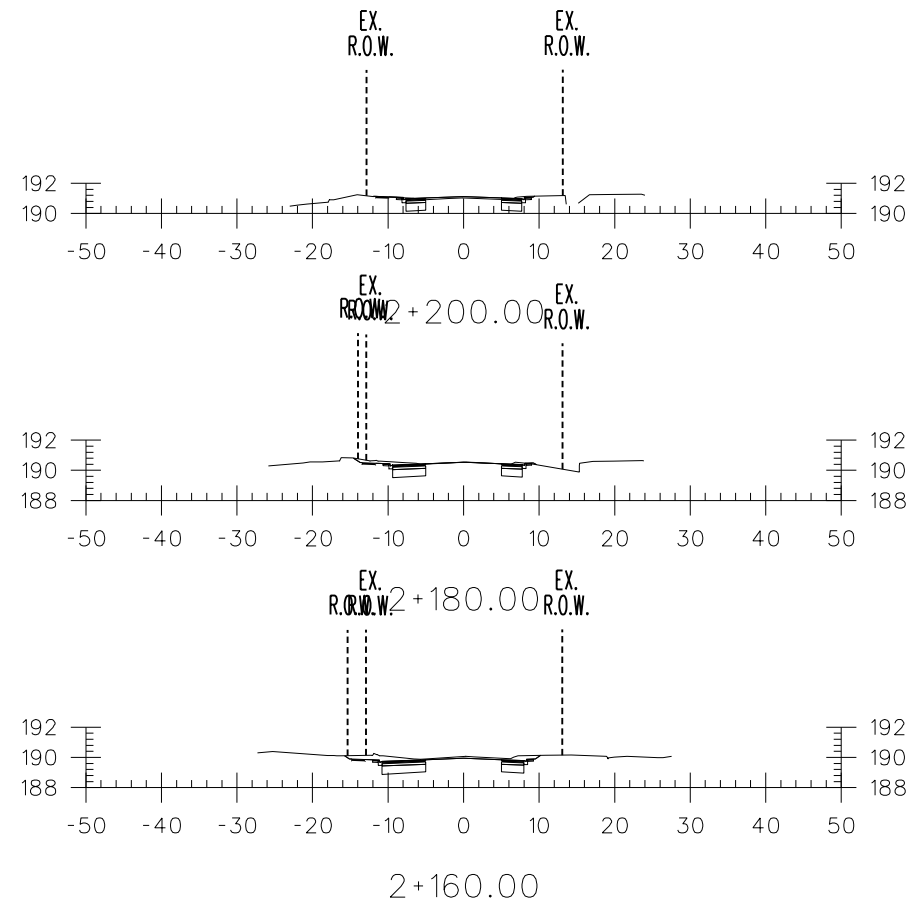
2+020.00

2+060.00

2+100.00

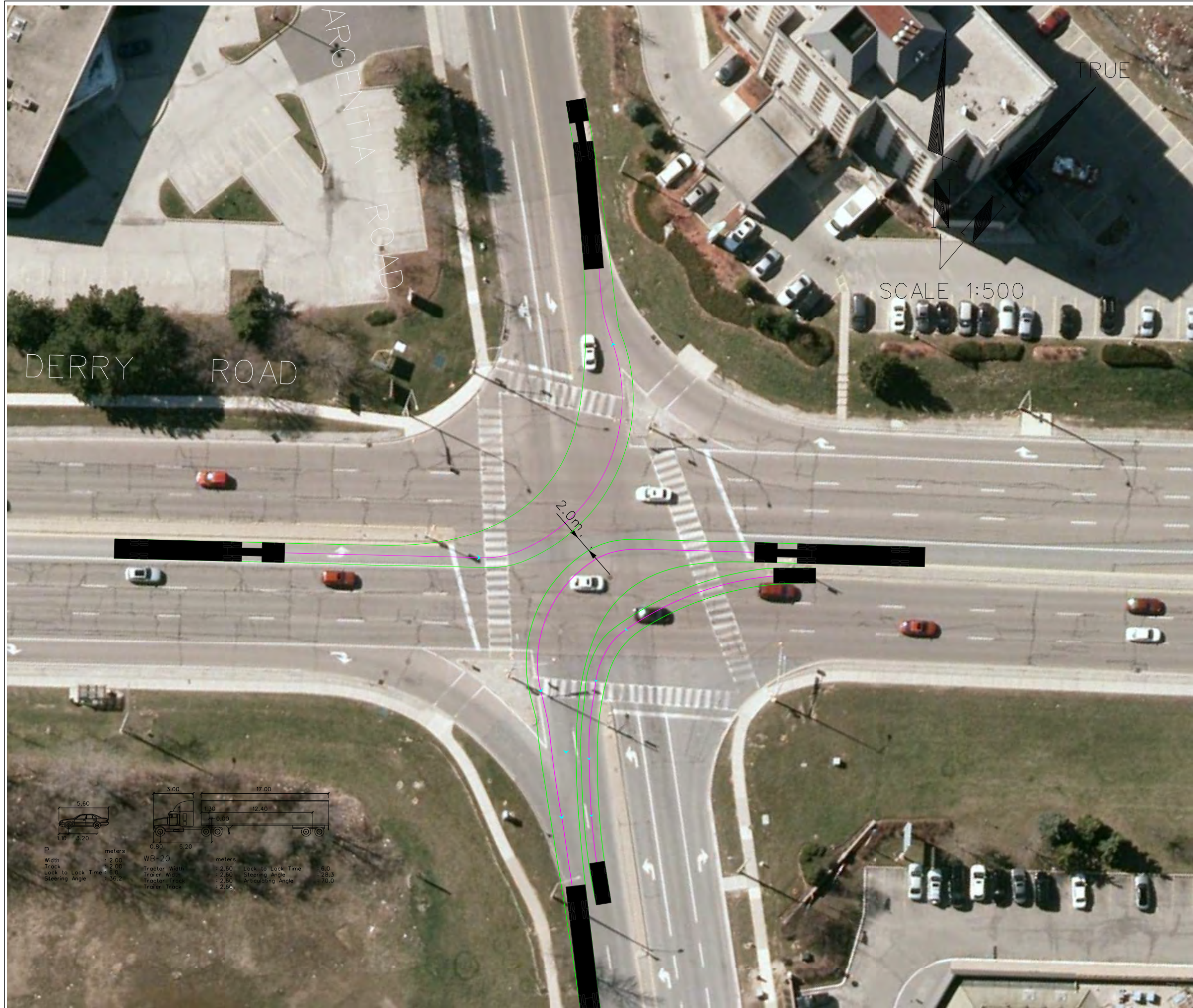
ARGENTIA ROAD STA. 2+020 TO STA. 2+140  
DATE: OCTOBER 2014  
SCALE 1:250





ARGENTIA ROAD STA. 2+160 TO STA. 2+270  
 DATE: OCTOBER 2014  
 SCALE 1:250





SERVICE DATA					
SERVICE	DATE	INIT.	SERVICE	DATE	INIT.
SAN SEWERS			GAS MAINS		
STORM SEWERS			BELL U/G CABLE		
WATERMANS			HYDRO U/G CABLE		
TRANSIT			HYDRO ONE		
PARKS & REC.			CTV		
INT. CLEAN WATER			COMMUNIC. CABLES		

REVISIONS		
DATE	DETAILS	INIT.

Designed by \_\_\_\_\_  
 Chkd. \_\_\_\_\_

Approved by \_\_\_\_\_



DERRY RD. & ARGENTIA RD.  
 AUTOTURN TESTING

CAD Area	Area X-X	Project No. II-4295
Checked by MF	Drawn by LL	Plan No.
Date OCTOBER 2014	Sheet 1 of 1	

