

Belfountain EA Study
Public Open House, October 30, 2012

Mississauga Road, Olde Base Line Road, Winston Churchill Boulevard, Bush Street, and Old Main Street

Today's Agenda

6:30 PM

Arrival and Displays

7:00 PM

Presentation

7:45 to 8:45 PM

Discussion and Input

8:45 to 9:00 PM

Key Messages and Next Steps

PUBLIC OPEN HOUSE - PUBLIC WORKBOOK



Your Name

Address

Email

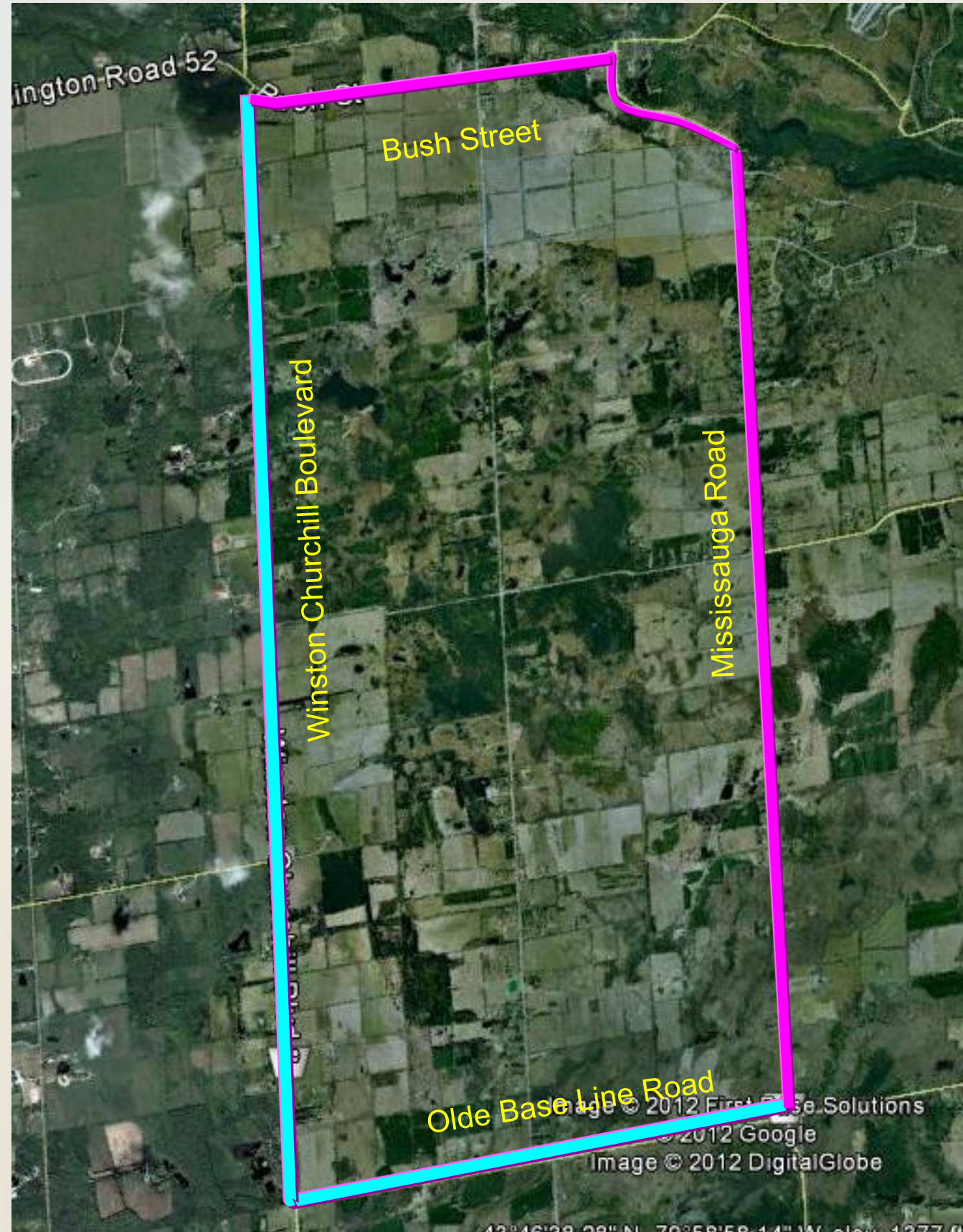
PART 1: TELL US ABOUT YOUR EXPERIENCES IN THE STUDY AREA

How do you travel within the Study Area?
Please identify by circling on the map the travelling routes that you and your family use in the study area.

Check the modes of transportation that you use:

- Single occupant vehicle
- Car pooling
- Cycling
- Motorcycle
- Truck

What transportation issues are you experiencing in the study area?



PART 2: HOW DO YOU ENVISION THESE ROADWAYS IN YOUR COMMUNITY?

Improvements through Context Sensitive planning and design will enhance experience for all users and reflect the character of the community

What transportation improvements would you like to see considered – i.e. to increase safety for all users, to improve roadway conditions etc?



What existing design features would you like to see maintained?



What design features do you think would enhance the community character?

PART 2: WHAT IDEAS DO YOU HAVE FOR THE FOLLOWING?



For improving conditions for pedestrians?

For accommodating parking?

For improving conditions for cyclists?

For accommodating motorcyclists?
