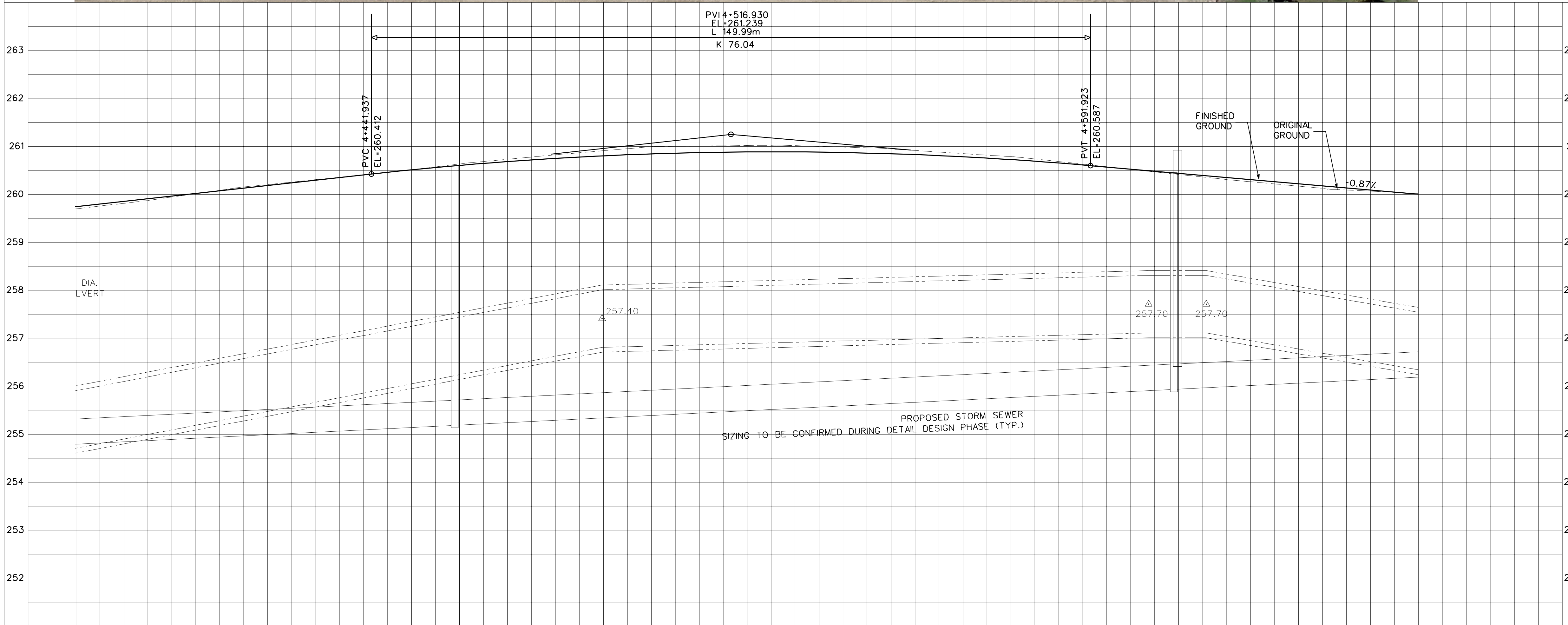


SERVICE DATA					
SERVICE	DATE	INIT.	SERVICE	DATE	INIT.
SAN SEWERS			GAS MAINS		
STORM SEWERS			BELL U/G CABLE		
WATER MAINS			HYDRO U/G CABLE		
TRANSIT			ONT. HYDRO		
PARKS & REC.			CTV		
ONT. CLEAN WATER					

REVISIONS		
DATE	DETAILS	INIT.



General Notes

- All Driveways ASPHALT Unless Otherwise Noted.
- All Service Locations Are Approximate And Must Be Located Accurately In The Field
- ⊙ Denotes Building - Not Located
- ⊙ Denotes Building Located
- ⊙ Type 'B' Bedding Unless Otherwise Noted (SAN)

B.M. No. Elev.

The Contractor is Responsible For Locating And Protecting All Existing Utilities Prior To And During Construction Location of Existing Utilities Approximate Only, To Be Verified In Field By Contractor.

Designed by _____ Chkd _____ Approved by _____

NOTICE TO CONTRACTOR

48 HOURS PRIOR TO COMMENCING WORK NOTIFY THE FOLLOWING:

- THE REGIONAL MUNICIPALITY OF PEEL
- CITY OF MISSISSAUGA WORKS DEPT.
- CITY OF BRAMPTON WORKS DEPT.
- TOWN OF CALEDON WORKS DEPT.
- BELL TELEPHONE COMPANY
- CONSUMERS GAS COMPANY
- MINISTRY OF TRANSPORTATION
- ONTARIO CLEAN WATER AGENCY
- HYDRO ELECTRIC POWER COMM. OF ONTARIO
- HYDRO ELECTRIC COMM. CITY OF MISSISSAUGA
- HYDRO ELECTRIC COMM. CITY OF BRAMPTON
- CABLE TELEVISION

10m 0 10 20 30m HORIZONTAL SCALE
1m 0 1 2 3m VERTICAL SCALE

Region of Peel
Working for you

MISSISSAUGA ROAD
(FROM BOVAIRD DR. TO MAYFIELD RD.)
PLAN AND PROFILE

Sta. 4+380.00 To Sta. 4+660.00

PR. ROAD ELEV.	Lots	Area	Project No.
EX. ROAD ELEV.	Checked by P.C.	Drawn by V.M.	105163
ROAD CHAINAGE	Date NOV 2012	Sheet 13 of 19	Plan No. PP13

259.729	259.950	260.170	260.391	260.590	260.737	260.831	260.872	260.861	260.798	260.681	260.517	260.343	260.169	259.995	PR. ROAD ELEV.	Lots	Area	Project No.
259.73	259.95	260.17	260.39	260.59	260.74	260.83	260.87	260.86	260.80	260.68	260.52	260.34	260.17	260.00	EX. ROAD ELEV.	Checked by P.C.	Drawn by V.M.	105163
4+380	4+400	4+420	4+440	4+460	4+480	4+500	4+520	4+540	4+560	4+580	4+600	4+620	4+640	4+660	ROAD CHAINAGE	Date NOV 2012	Sheet 13 of 19	Plan No. PP13