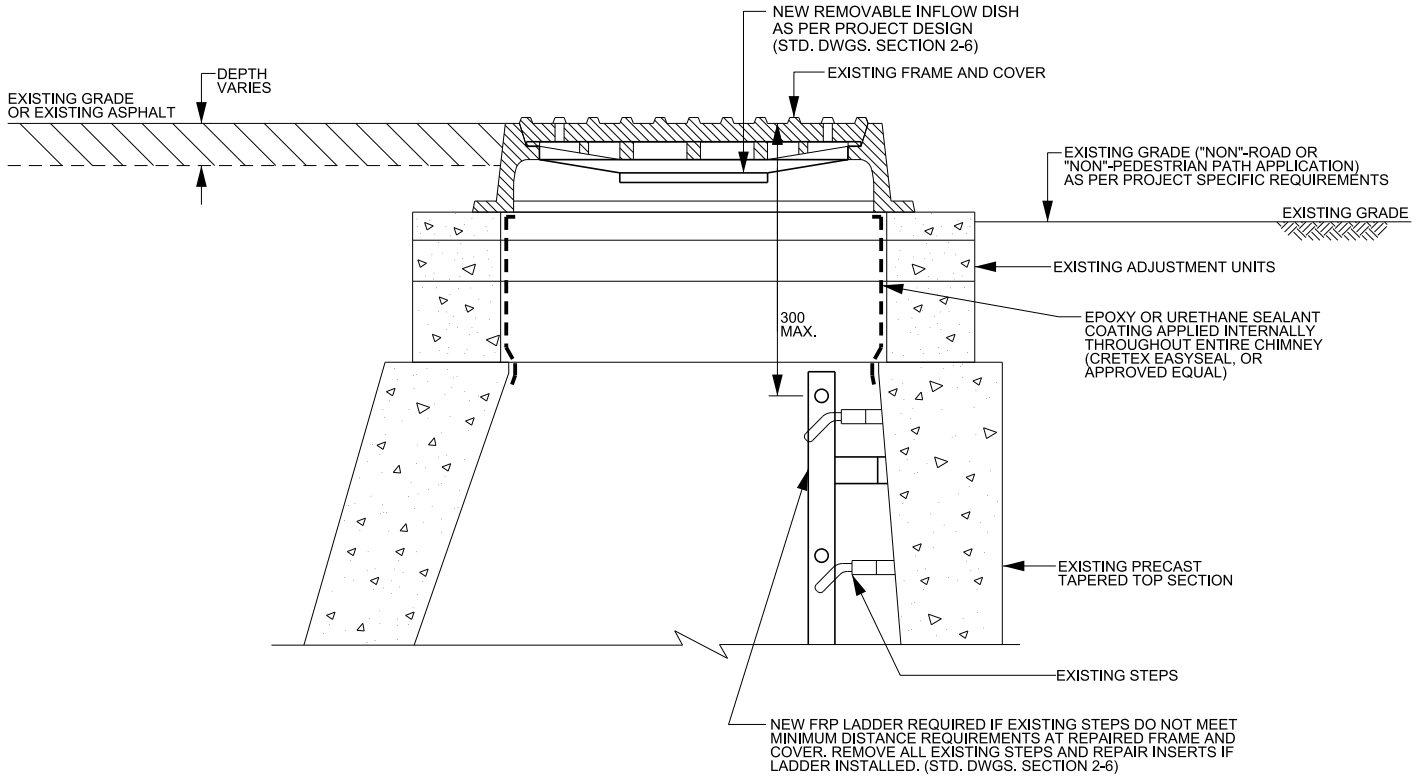


NOTE: THIS OPTION HAS NO REMOVAL OF EXISTING FRAME AND COVER INCLUDING EXISTING ADJUSTMENT UNITS OR BRICK



NOTE: REPAIR JOINT OR CRACKS WITH INJECTED HYDROPHOBIC GROUT SEALANT TO ELIMINATE ACTIVE INFLOW AND INFILTRATION AS PER MANUFACTURER'S RECOMMENDATIONS. INJECTION GROUT TO BE HYPERFLEX OR SEALGUARD II BY S1E OR APPROVED EQUAL.

NOTE: PARTIAL FRP LADDER SECTIONS MAY BE USED TO REPLACE UPPER STEPS WITH MINIMUM 2 ANCHORING (TOP AND BOTTOM) BRACKETS AS PER FRP MANUFACTURER'S REQUIREMENTS. PARTIAL SECTIONS MUST MATCH TO SPACING OF EXISTING STEPS WITH A MAX. 300 DISTANCE BETWEEN STEPS TO RUNGS. (STD. DWG. 2-6-9)

OPTION FOR EXISTING ADJUSTMENT UNIT
INTERNAL REPAIR

NOTE

1. REFER TO STANDARD DRAWINGS 2-8-2, 2-8-3 FOR TYPICAL REHABILITATION OPTIONS BELOW THE EXISTING MAINTENANCE HOLE TOP SECTION AND ADJUSTMENT UNITS.
2. REFER TO STANDARD DRAWING 2-8-1 FOR GENERAL NOTES PERTAINING TO REHABILITATION OF MAINTENANCE HOLES.

NEW CONSTRUCTION		REHABILITATION	
FULL EXCAVATION	PARTIAL EXCAVATION	NO EXCAVATION	
INTERNAL		EXTERNAL	
ROW	FLOOD PLAIN	EASEMENT	
///	H2S	SECURITY	



PUBLIC WORKS
STANDARD DRAWING

REV. DATE: NOVEMBER 2019

REVISION NUMBER: 1 FOR REVISION TRACKING REFER TO STD. DWG. 2-0-2

APPROVED BY DRAWN BY

A.P. AINLEY GROUP

STD. DWG. NUMBER SCALE

2-8-9 N.T.S.

REHABILITATION
EXISTING ADJUSTMENT UNIT REPAIR (LINING)
WITH NO EXCAVATION