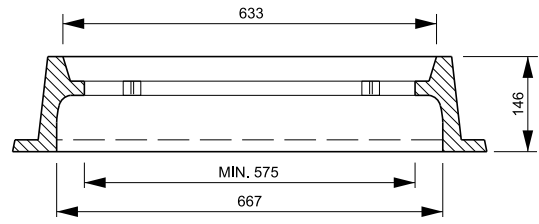
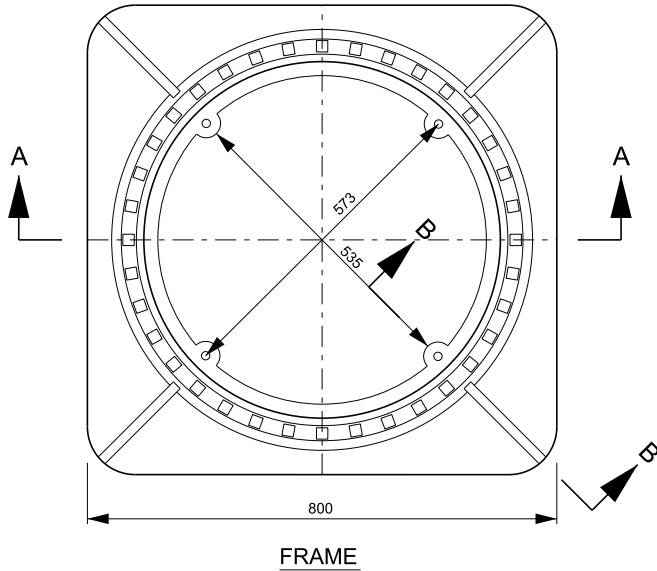
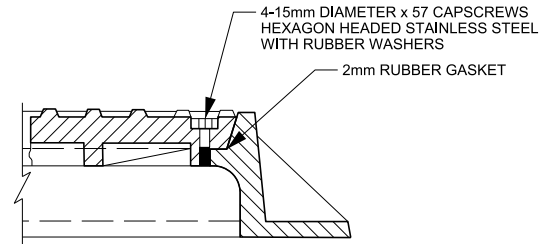


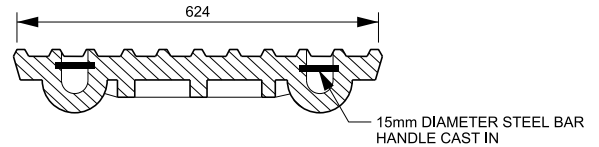
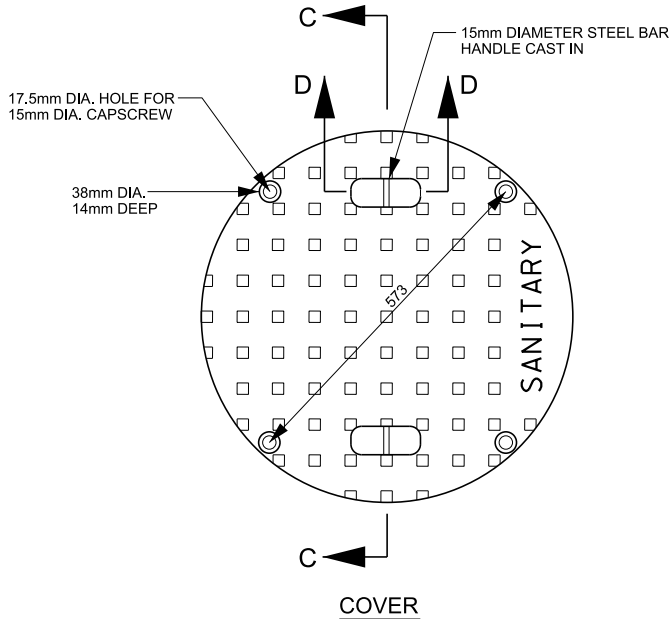
THIS FRAME AND COVER SYSTEM IS NOT FOR INSTALLATION
WITHIN FLOODPLAIN UNLESS SPECIFIED BY PROJECT ENGINEER



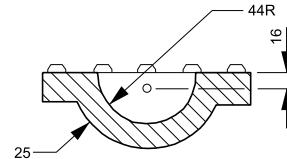
SECTION A-A



SECTION B-B



SECTION C-C



SECTION D-D

NOTE

1. REFER TO STANDARD DRAWING 2-5-1, 2-7-1 AND 2-8-1 FOR GENERAL NOTES PERTAINING TO PRECAST MAINTENANCE HOLES.
2. FRAME TO BE ATTACHED DIRECTLY TO PRECAST MAINTENANCE HOLE TOP. REFER TO STANDARD DRAWINGS 2-6-7 AND 2-6-8.
3. THE WORD "SANITARY" TO BE CAST INTO COVER WITH 50mm LETTERS.
4. FOR USE IN EASEMENT WHERE UNAUTHORIZED ACCESS NEEDS TO BE LIMITED.
5. NOT FOR USE IN AREAS WHERE SURFACE WATER OR FLOODING COULD CAUSE INFILTRATION OR INFLOW. USE FRAME AND COVER AS PER STANDARD DRAWING 2-6-6.
6. NOT FOR USE IN PAVED PORTION OF ROW.
7. IF COVER IS PRESENT ON AN EXISTING ASSET, REPLACE GASKET AND MISSING BOLTS, UNLESS SUBJECT TO NOTE 5. REPLACE FRAME AND COVER AS PER STANDARD DRAWING 2-6-6.

NEW CONSTRUCTION		REHABILITATION	
FULL EXCAVATION	PARTIAL EXCAVATION	NO EXCAVATION	
INTERNAL		EXTERNAL	
ROW	FLOOD PLAIN	EASEMENT	
I/I	H2S	SECURITY	



PUBLIC WORKS
STANDARD DRAWING

REV. DATE: MARCH 2017

REVISION NUMBER: FOR REVISION TRACKING REFER TO STD. DWG. 2-0-2

APPROVED BY DRAWN BY

A.P. AINLEY GROUP

STD. DWG. NUMBER SCALE

2-6-4 N.T.S.

MAINTENANCE HOLE APPURTENANCES
HEAVY DUTY WATER TIGHT
FRAME AND COVER