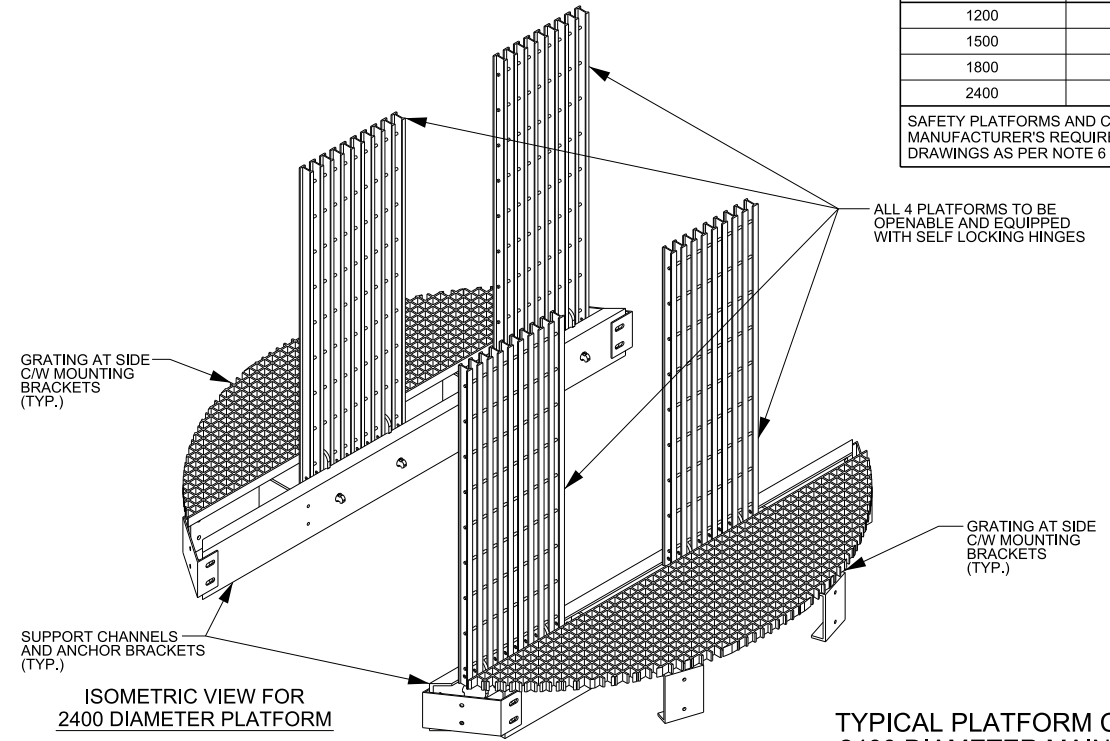
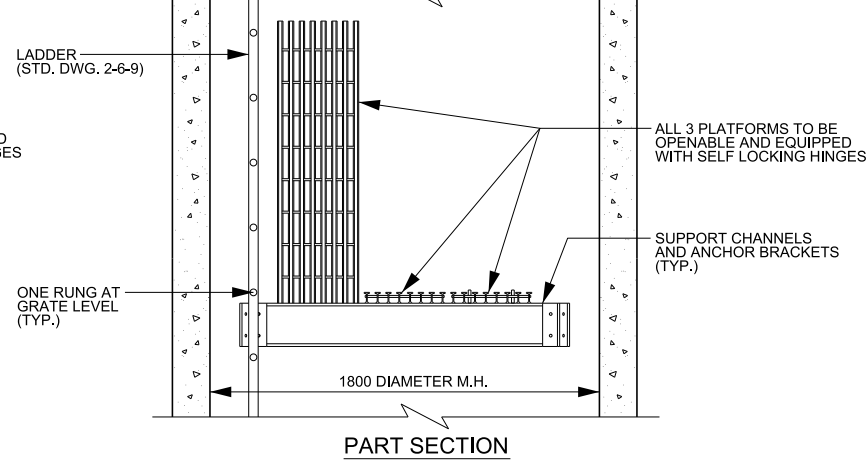
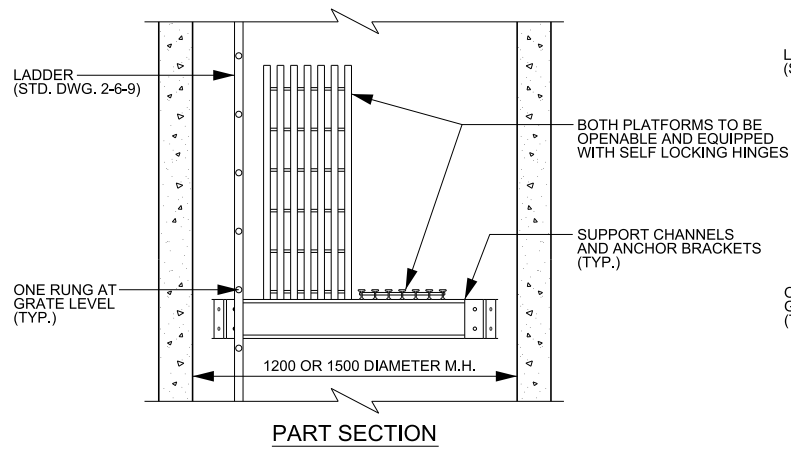


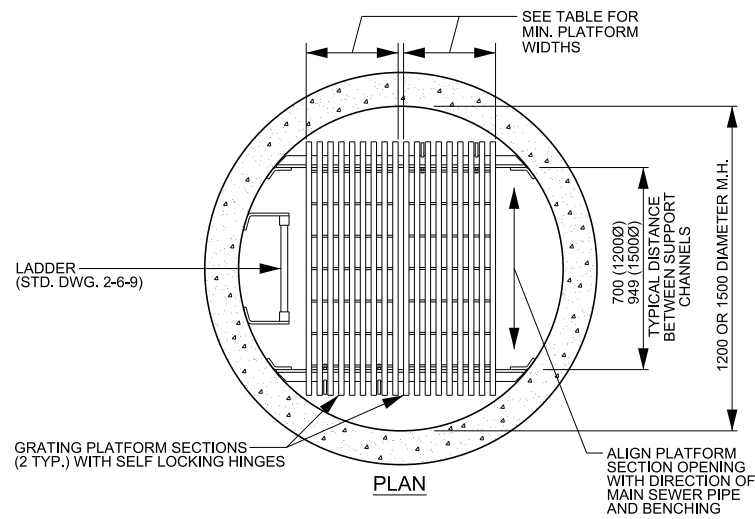
NOTE: SAFETY PLATFORM CONFIGURATIONS ARE SHOWN FOR TYPICAL PRECAST CIRCULAR MAINTENANCE HOLES. ALTERNATE PLATFORM CONFIGURATIONS MAY BE REQUIRED FOR SPECIFIC PROJECT DESIGNS, DUE TO BENCHING OR PIPE CONFIGURATIONS, OR TO ALLOW PROPER ACCESS. ALTERNATE CONFIGURATIONS MAY BE PROVIDED WITH ENGINEER APPROVED EQUAL AND STAMPED SHOP DRAWINGS (SEE NOTE 6).

MAINTENANCE HOLE DIAMETER	NUMBER OF PLATFORMS PER LEVEL	MIN. WIDTH OF PLATFORM SECTIONS
1200	2	330mm
1500	2	432mm
1800	3	381mm
2400	4	381mm

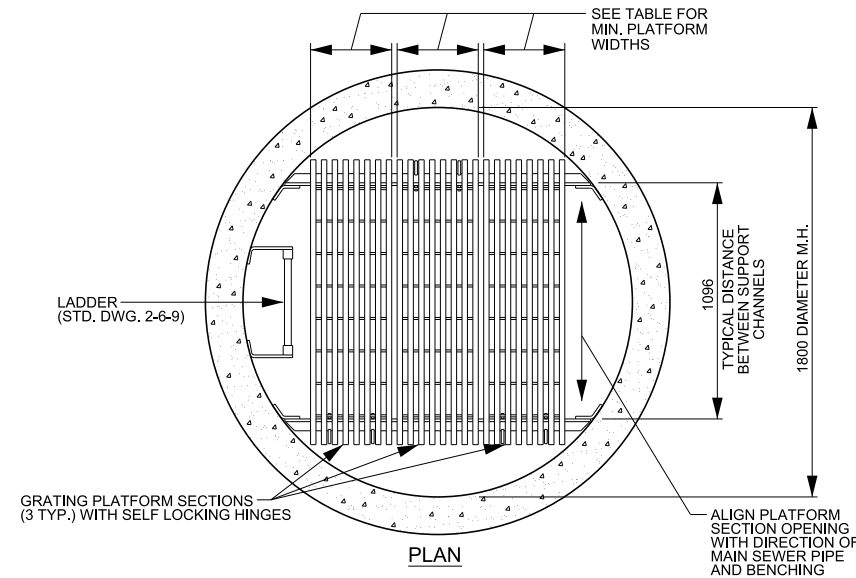
SAFETY PLATFORMS AND CONFIGURATIONS AS PER MANUFACTURER'S REQUIREMENTS. SUBMIT SHOP DRAWINGS AS PER NOTE 6



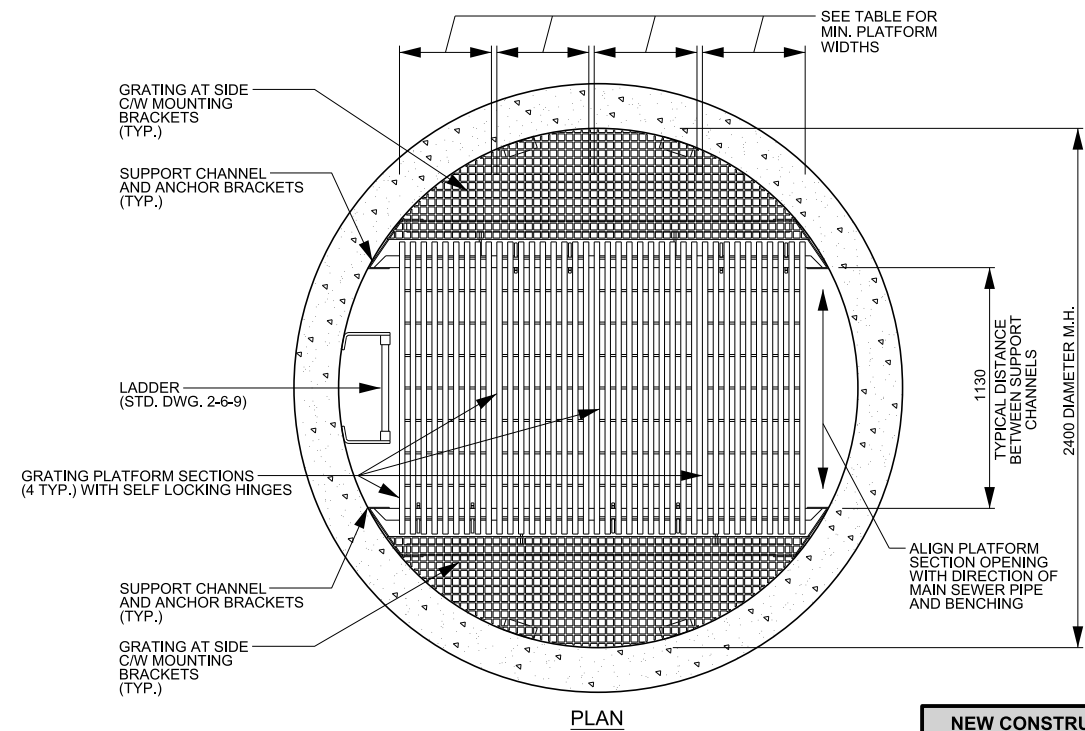
TYPICAL PLATFORM CONFIGURATION 2400 DIAMETER MAINTENANCE HOLE WITH 4 PLATFORM SECTIONS



TYPICAL PLATFORM CONFIGURATION 1200 OR 1500 DIAMETER MAINTENANCE HOLE WITH 2 PLATFORM SECTIONS



TYPICAL PLATFORM CONFIGURATION 1800 DIAMETER MAINTENANCE HOLE WITH 3 PLATFORM SECTIONS



PLAN

- NOTE**
- REFER TO STANDARD DRAWING 2-5-1, 2-7-1 AND 2-8-1 FOR GENERAL NOTES PERTAINING TO PRECAST OR CPP MAINTENANCE HOLES.
 - ALL BOLTS, NUTS AND WASHERS SHALL BE 316 STAINLESS STEEL UNLESS OTHERWISE INDICATED IN PROJECT DESIGN.
 - ALL WALL BRACKETS AND MOUNTING BRACKETS SHALL BE MOLDED FRP.
 - ALL FRP SHALL BE MANUFACTURED IN ACCORDANCE WITH CAN/CGSB 41.22-93 OR ASTM 3647.
 - ALUMINUM TO BE OF APPROVED ALLOY. AT ALL POINTS WHERE ALUMINUM AND CONCRETE COME INTO CONTACT (ENDS OF ANGLES) ALUMINUM SURFACES TO BE COATED WITH ZINC CHROMATE OR TWO COATS OF STATIC ASPHALT PAINT.
 - SUBMIT SHOP DRAWINGS FOR ALL PLATFORMS TO THE CONTRACT ADMINISTRATOR FOR REVIEW AND COMMENT. ALL DRAWINGS SHALL BEAR THE SIGNATURE AND SEAL OF A PROFESSIONAL ENGINEER LICENSED TO PRACTISE IN ONTARIO.
 - PLATFORMS SHALL BE USED IN ALL CHAMBERS 5.0m OR GREATER IN DEPTH, MEASURED FROM TOP PLAIN OF COVER TO PIPE INVERT.
 - IN A CHAMBER 5.0m DEEP, A SINGLE PLATFORM SHALL BE POSITIONED AT 2.4m (MAX.) FROM TOP PLAIN OF COVER (REFER TO NOTE 7d).
 - IN A CHAMBER WITH A DEPTH GREATER THAN 7.6m, A PLATFORM SHALL BE POSITIONED AT 2.4m (MAX.) FROM TOP PLAIN OF COVER AND 300mm (MAX.) ABOVE OBVERT OF PIPE, REGARDLESS OF PIPE DIAMETER.
 - ADDITIONAL PLATFORMS SHALL BE ADDED AND SPACED EQUALLY BETWEEN TOP AND BOTTOM PLATFORMS REFERENCED IN b) SO THAT THE MAXIMUM SPACING BETWEEN PLATFORMS SHALL NOT EXCEED 5.0m (MAX.).
 - BOTTOM PLATFORMS SHALL BE REQUIRED, INDEPENDANT OF DEPTH, IN ALL CHAMBERS WHERE PIPE DIAMETER IS GREATER THAN 600mm, UNLESS OTHERWISE INDICATED IN PROJECT DESIGN.
 - TOP SAFETY PLATFORM TO BE PLACED AT MAX 2.4m FROM TOP COVER.
 - BOTTOM SAFETY PLATFORM TO BE POSITIONED 300mm ABOVE PIPE OBVERT UNLESS RECESSED BENCHING AND LADDER REQUIRED FOR LARGE DIAMETER SANITARY SEWERS.
 - DROP STRUCTURES TO BE LOCATED BELOW BOTTOM SAFETY PLATFORM.
 - WHERE OBVERT OF TYPICAL DROP PIPE TO CENTRELINE OF INCOMING SEWER PIPE EXCEEDS 1500mm, SAFETY PLATFORM TO BE INSTALLED AT 1m BELOW CENTRELINE OF INCOMING SEWER PIPE OPENING.
 - ALL PLATFORM SECTIONS ARE TO BE EQUIPPED WITH SELF LOCKING HINGE.
 - ANCHORING IN AWWA C30X SERIES (CPP) RISER OR BASE SECTIONS SHALL UTILIZE FACTORY INSTALLED INSERTS PROVIDED DURING PIPE MANUFACTURING UNLESS OTHERWISE INDICATED BY AGENCY AS PER PROJECT SPECIFIC DESIGN. FIELD INSTALLED ANCHORS SHALL ONLY BE PERMITTED WITH APPROVAL BY AGENCY. SHALL NOT PENETRATE THE STEEL CYLINDER, AND SHALL MEET ALL LOAD REQUIREMENTS AS PER PIPE, LADDER, AND PLATFORM MANUFACTURER.
 - ANCHOR INSERTS IN PRECAST TO BE FIELD OR FACTORY INSTALLED WHERE APPLICABLE, AS PER DESIGN REQUIREMENTS.

NOTE: FRP PRODUCTS TO BE PROVIDED BY ACCESS INDUSTRIAL OF MISSISSAUGA (OR APPROVED EQUAL)

NEW CONSTRUCTION		REHABILITATION
FULL EXCAVATION	PARTIAL EXCAVATION	NO EXCAVATION
INTERNAL		EXTERNAL
ROW	FLOOD PLAIN	EASEMENT
I/I	H2S	SECURITY



PUBLIC WORKS STANDARD DRAWING

MAINTENANCE HOLE APPURTENANCES
TYPICAL SAFETY LANDING PLATFORM CONFIGURATIONS

REV. DATE: AUGUST 2020

REVISION NUMBER: 2 FOR REVISION TRACKING REFER TO STD. DWG. 2-0-2

APPROVED BY DRAWN BY

A.P. AINLEY GROUP

STD. DWG. NUMBER SCALE

2-6-15 N.T.S.