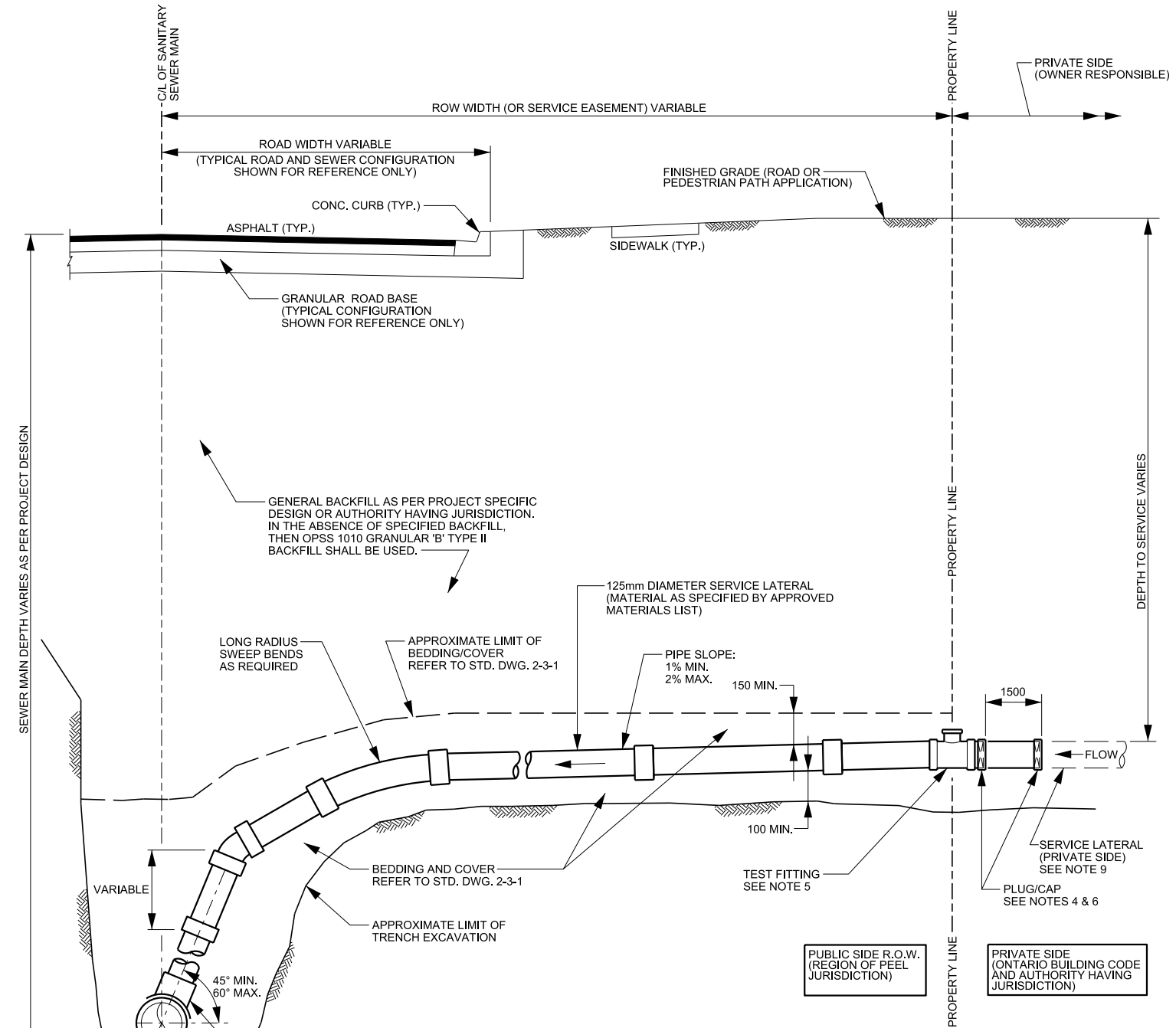


STANDARD SERVICE LATERAL WITH LONG RADIUS SWEEP RISER FROM MAIN

- MIN. SERVICE SIZE**
1. SINGLE SERVICE CONNECTIONS MIN. SIZE 125mm DIA. PIPE
 2. FOR DOUBLE SERVICE CONNECTIONS REFER TO STD. DWG. 2-4-4



STANDARD SERVICE LATERAL WITH VERTICAL RISER FROM MAIN

- MIN. SERVICE SIZE**
1. SINGLE SERVICE CONNECTIONS MIN. SIZE 125mm DIA. PIPE
 2. FOR DOUBLE SERVICE CONNECTIONS REFER TO STD. DWG. 2-4-4

- NOTE**
1. FOR NEW MAINLINE SEWERS 375mm AND SMALLER, SERVICE LATERAL CONNECTIONS MUST BE MADE USING FACTORY MADE TEES AT MAIN.
 2. NEW SERVICE CONNECTIONS TO EXISTING MAINS SHALL BE MADE USING AN APPROVED WATERTIGHT STRAP-ON SADDLE.
 3. STRAP-ON SADDLES MUST BE INSTALLED ON THE MAIN AND AN APPROVED CUT-IN TOOL MUST BE USED FOR FIELD INSTALLED CONNECTIONS.
 4. SERVICE CONNECTION MUST BE SECURELY PLUGGED AT PROPERTY LINE WITH A WATERTIGHT, FACTORY MANUFACTURED PLUG/CAP THAT WAS DESIGNED FOR USE ON SPECIFIED LATERAL MATERIAL AND DIAMETER. IF 1500mm EXTENSION IS USED (AS PER NOTE 6 AND SHOWN THIS DWG.) THEN PLUG SHALL BE INSTALLED AT THE DISTAL END.
 5. AN APPROVED TEST FITTING TO BE INSTALLED AT PROPERTY LINE TO BE EQUIPPED WITH WATERTIGHT RUBBER GASKETS AT ALL CONNECTION AND INSPECTION POINTS.
 6. SANITARY SEWER CONNECTIONS TO BE LAID TO THE PROPERTY LINE AS PER THE ABOVE STANDARD. REGION HAS NO OBJECTION TO THE EXTENSION OF THE SANITARY SEWER CONNECTIONS BEYOND THE PROPERTY LINE INTO THE PRIVATE SIDE. PRIVATE SIDE CONSTRUCTION IS UNDER LOCAL MUNICIPALITY JURISDICTION.
 7. REFER TO STD. DWG. 2-4-4 FOR ADDITIONAL DETAILS.
 8. SANITARY LATERALS TO BE PROPERLY ABANDONED AT THE MAIN WITH WATERTIGHT SEAL.
 9. PRIVATE SIDE LATERAL TO CONNECT TO MUNICIPAL LATERAL USING A WATERTIGHT CONNECTION IN A CONFIGURATION THAT WILL NOT OBSTRUCT SANITARY FLOWS OR CAUSE ACCUMULATION OF DEBRIS FROM PRIVATE PLUMBING.
 10. SANITARY SERVICE LATERAL PIPE TO BE GREEN IN COLOUR AND MINIMUM SDR 28.
 11. NO SERVICE CONNECTION SHALL BE PERMITTED TO CONNECT TO THE MAIN AT LESS THAN 45 DEGREES.
 12. LATERAL CONNECTIONS UNLESS OTHERWISE SPECIFIED BY PROJECT ENGINEER SHALL BE MADE WITH INVERT OF LATERAL TO ENTER MAINLINE SEWER ABOVE SPRINGLINE AND BELOW TOP DEAD CENTRE.



PUBLIC WORKS STANDARD DRAWING

SERVICE CONNECTIONS FOR FLEXIBLE PIPE (SINGLE RESIDENTIAL DWELLING INCLUDING SEMI-DETACHED)

REV. DATE: AUGUST 2020

REVISION NUMBER: 2 FOR REVISION TRACKING REFER TO STD. DWG. 2-0-2

APPROVED BY DRAWN BY

A.P. AINLEY GROUP

STD. DWG. NUMBER SCALE

2-4-2 N.T.S.