

Growing Where We Invest

Region of Peel Growth Management Workshop



Transportation

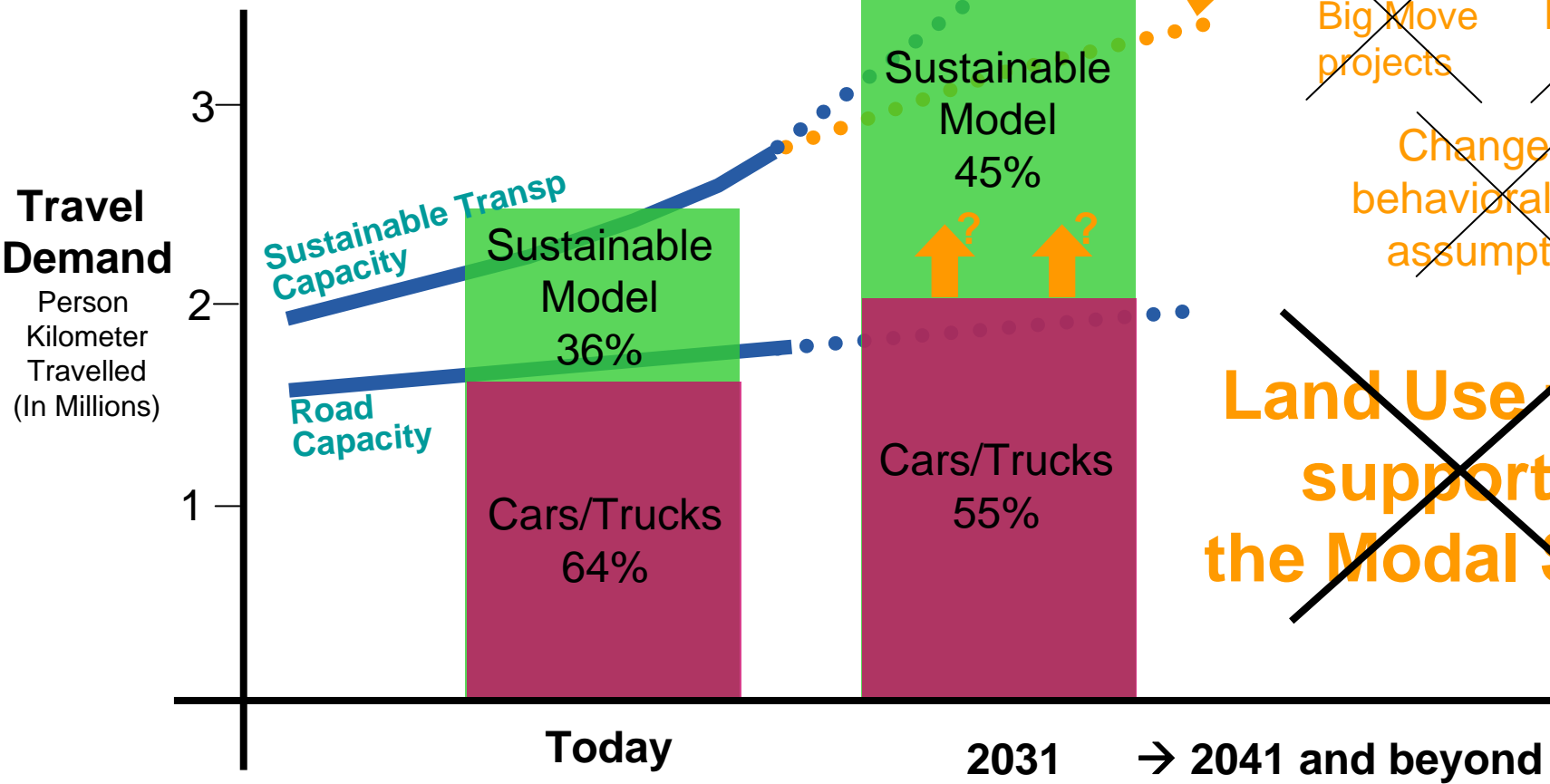
Gary Kocialek

Area Lead, Transportation Planning

May 30, 2013

Mode of Travel – Future Trend

What If...



~~Metrolinx Big Move projects~~

~~Funding~~

~~Change of behavioral shift assumption~~

~~Land Use that supports the Modal Shift~~

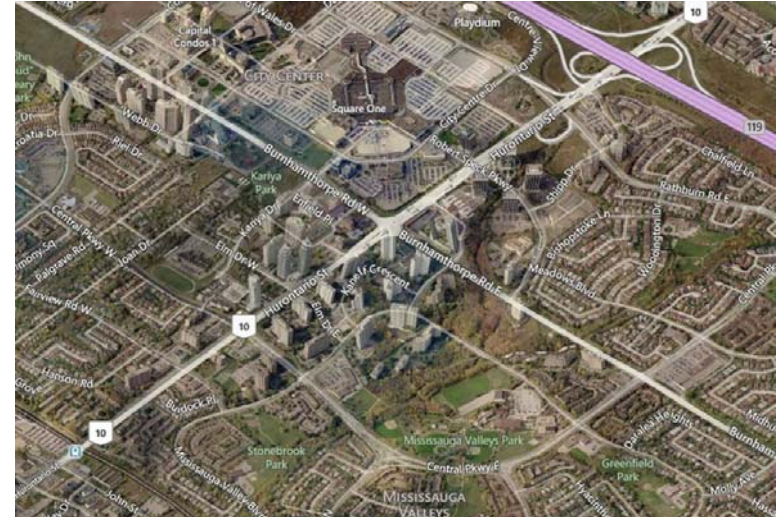
Better Integration of Land use and Transportation Planning

Greenfield



and

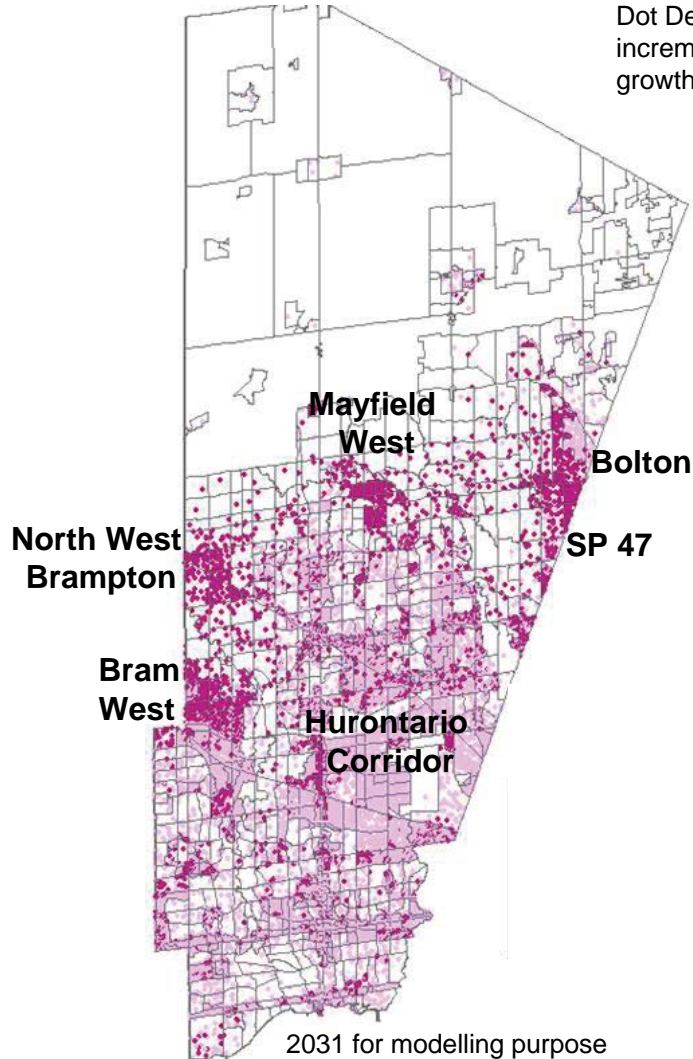
Intensification corridor



Growth Implication to Transportation

Population growth locations

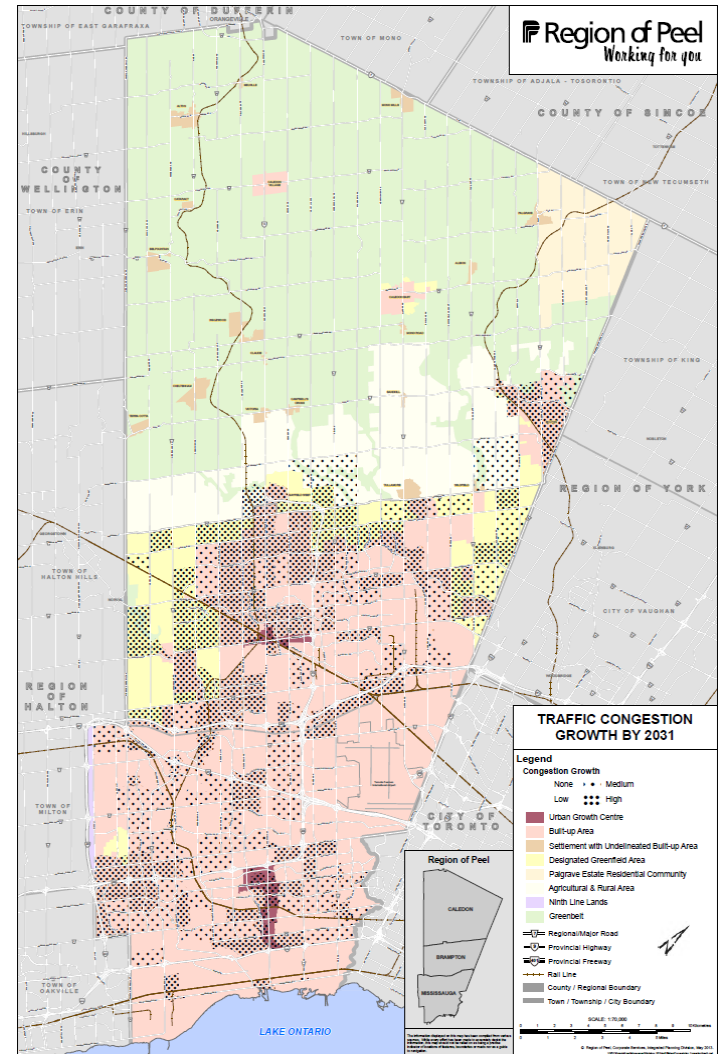
Dot Density of incremental growth in 2031



2031 for modelling purpose

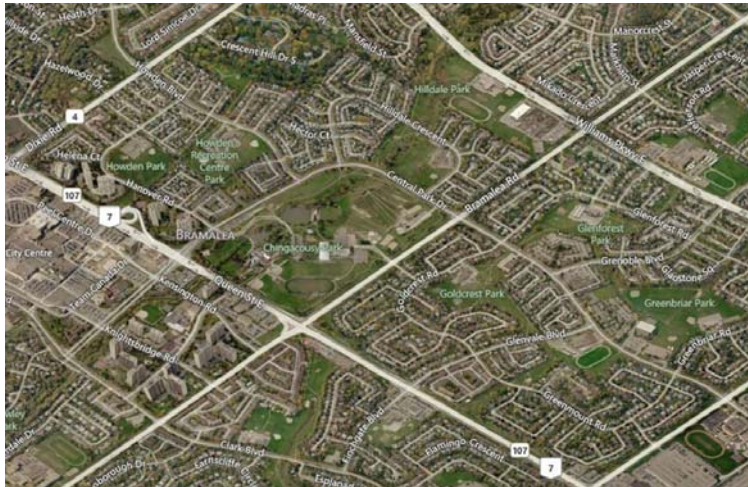
Transportation growth locations

Difference of # of vehicles between 11 & 31



Better Integration of Land use and Transportation Planning

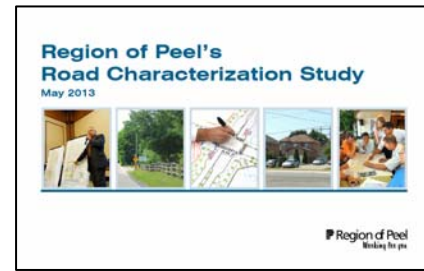
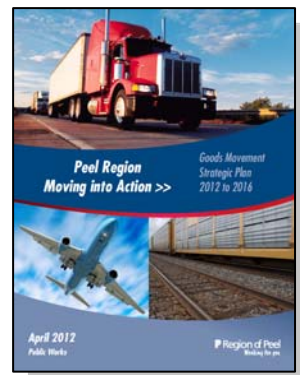
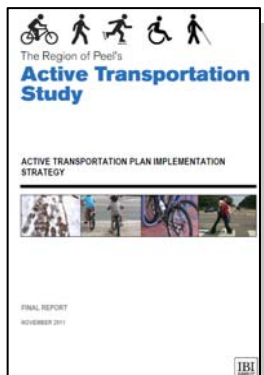
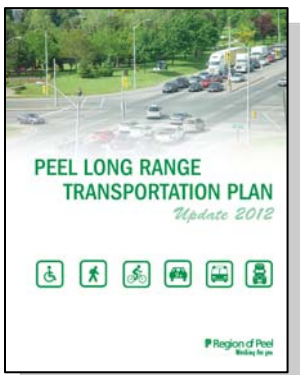
Residential



and

Commercial



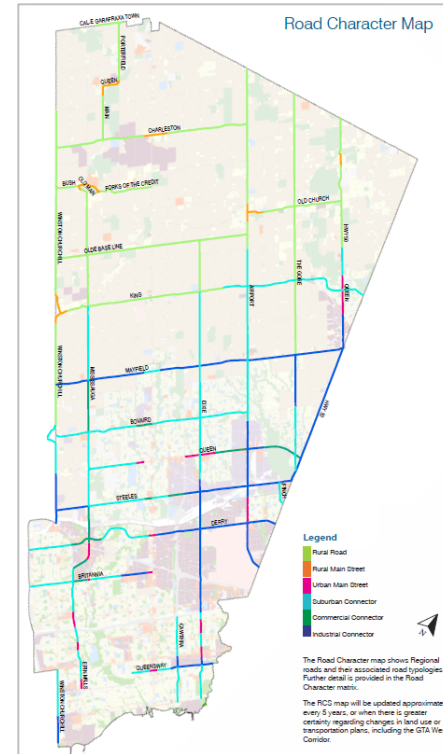
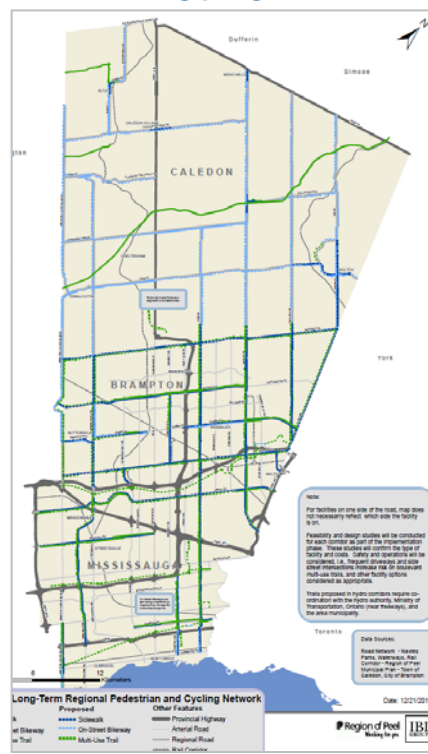
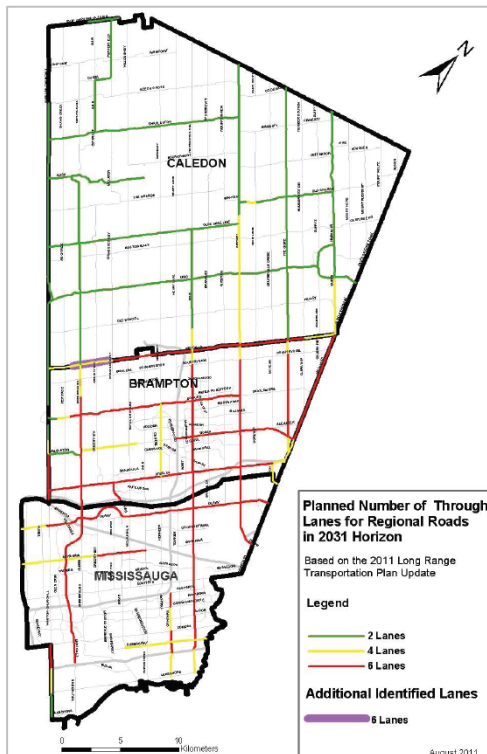


Regional Road Network

Active Transportation Network

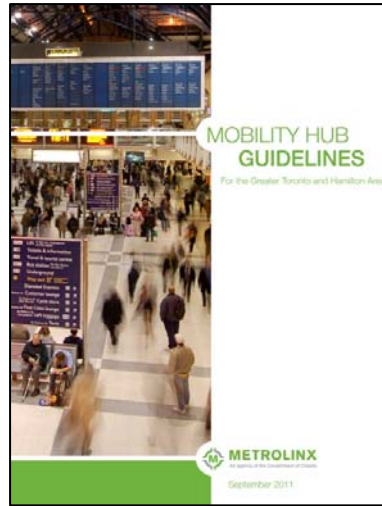
Goods Movement Network

Road Character Network



Ideas

- Mobility Hub



- Freight Hub



Breakout Session – Transportation Questions

- What do you believe are the most important transportation challenges as it pertains to:
 - Greenfield development
 - Intensification
- What should the solutions be to the challenges identified?
- How should land use and transportation be better integrated to manage growth?
- What are the most important land use planning implications for development along major arterials?
- What transportation initiatives should Peel consider in preparation for anticipated growth?

Growing Where We Invest

Region of Peel Growth Management Workshop

Active Transportation



Active Transportation Plan

➤ **New Comprehensive Policies**

To make communities more walk-able and bike-friendly.

➤ **Programs**

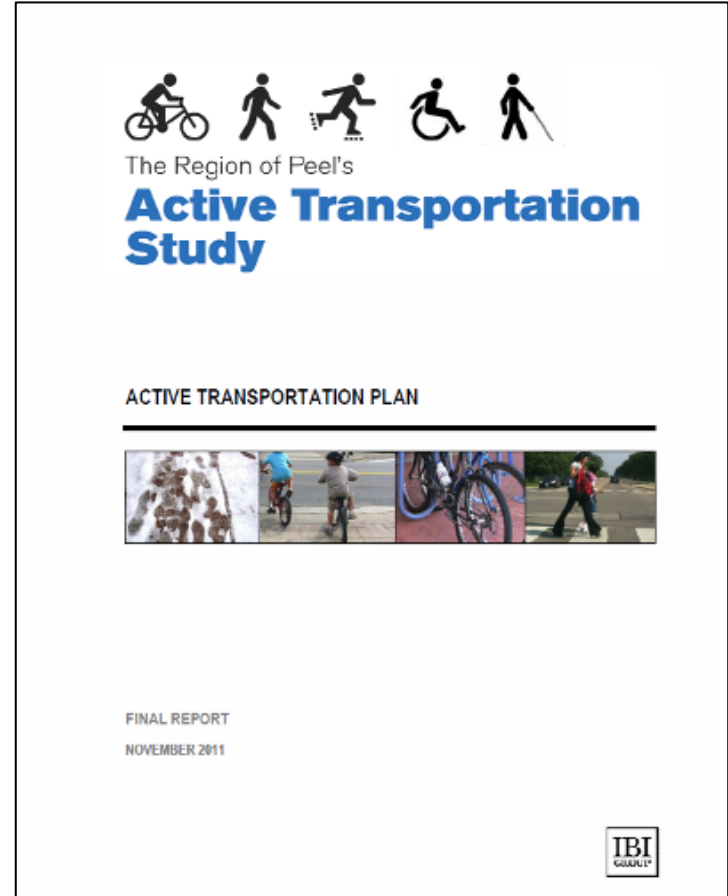
To change travel behaviour.

➤ **Active Transportation Infrastructure**

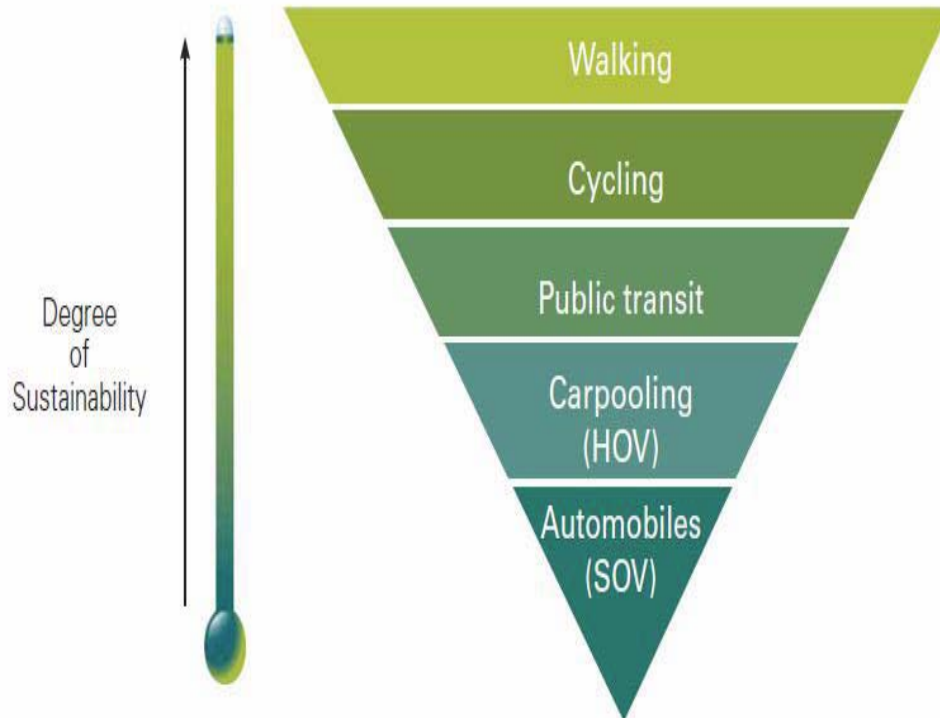
That supports area municipal plans and fills in gaps, and coordinate with existing capital programs.

Our Mandate

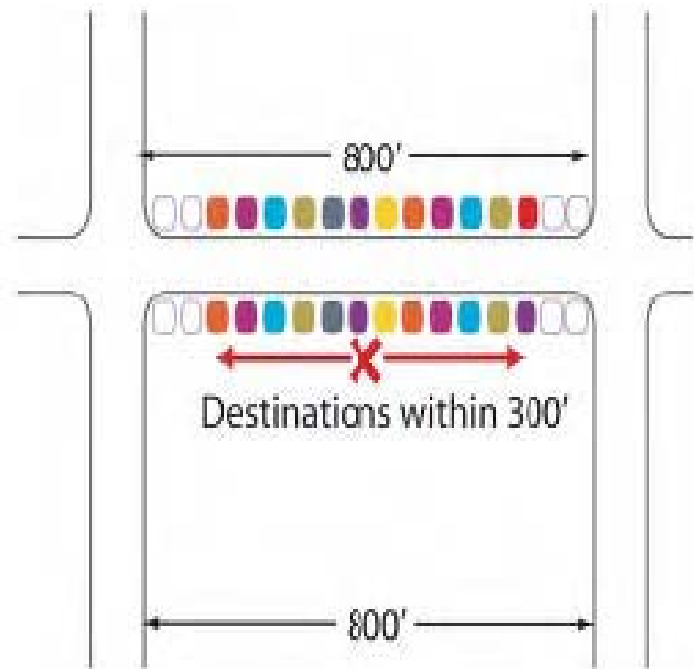
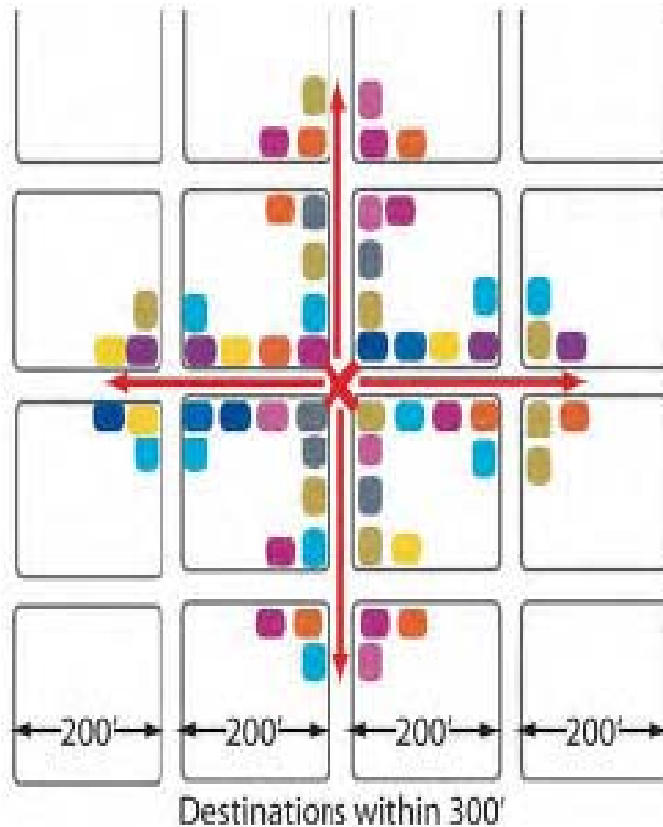
To create a place where walking, cycling and rolling are safe, convenient, appealing and accessible options for everyone.



Walking and Cycling = Sustainable Transportation



Sustainable Street layout



Many more destinations can be reached walking 300' within a network of short blocks than in one with long blocks (Credit: Marty Bruinsma)

Image Source: MODEL DESIGN MANUAL for Living Streets, 2012

Efficient Movement of People



Car?



Bus?



Bicycle?

(Poster in city of Muenster Planning Office, August 2001)

Credit: Press-Office City of Münster, Germany

Questions:

- The Region completed an Active Transportation Master Plan that provides a vision to address current and long term needs (e.g. fill the gaps, enhance AT facilities, promotional programs, etc). Do you think this vision is adequate to address growth from now to 2041?

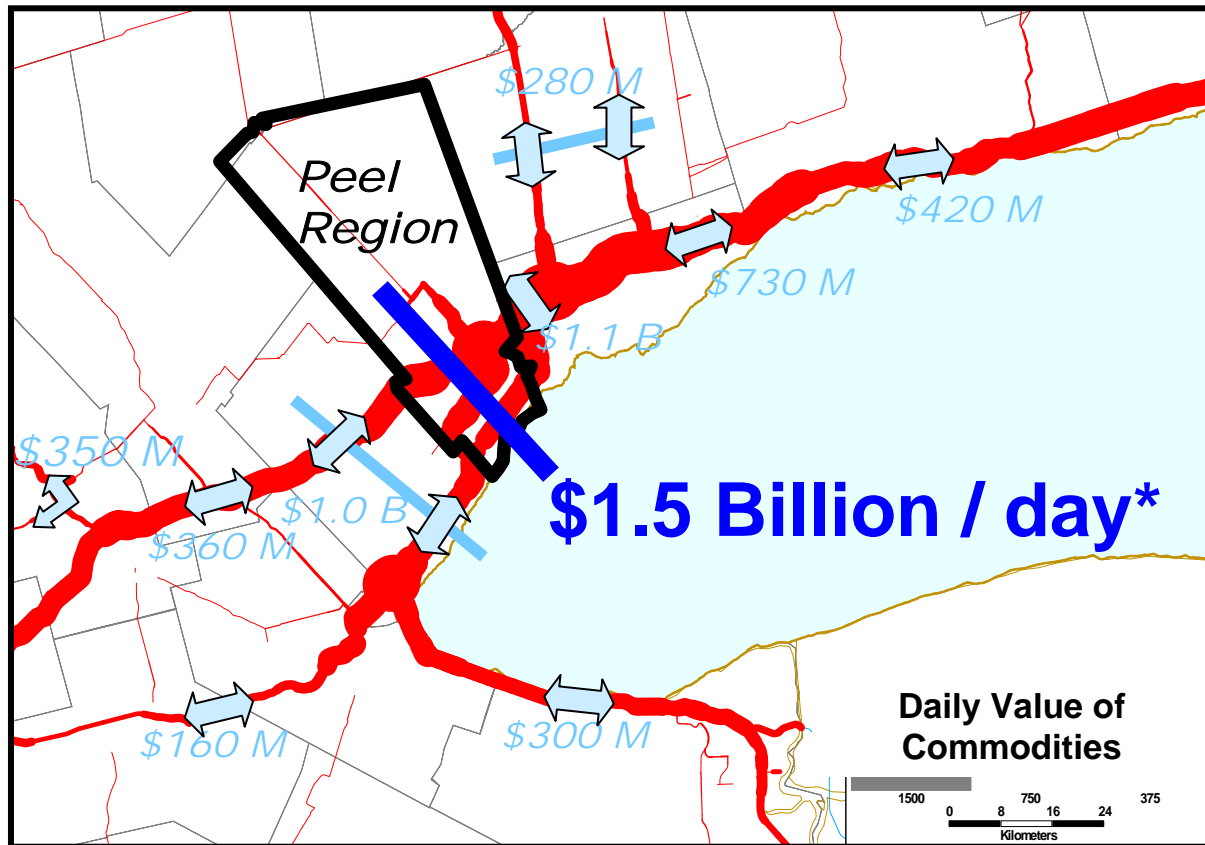
Growing Where We Invest

Region of Peel Growth Management Workshop

Goods Movement



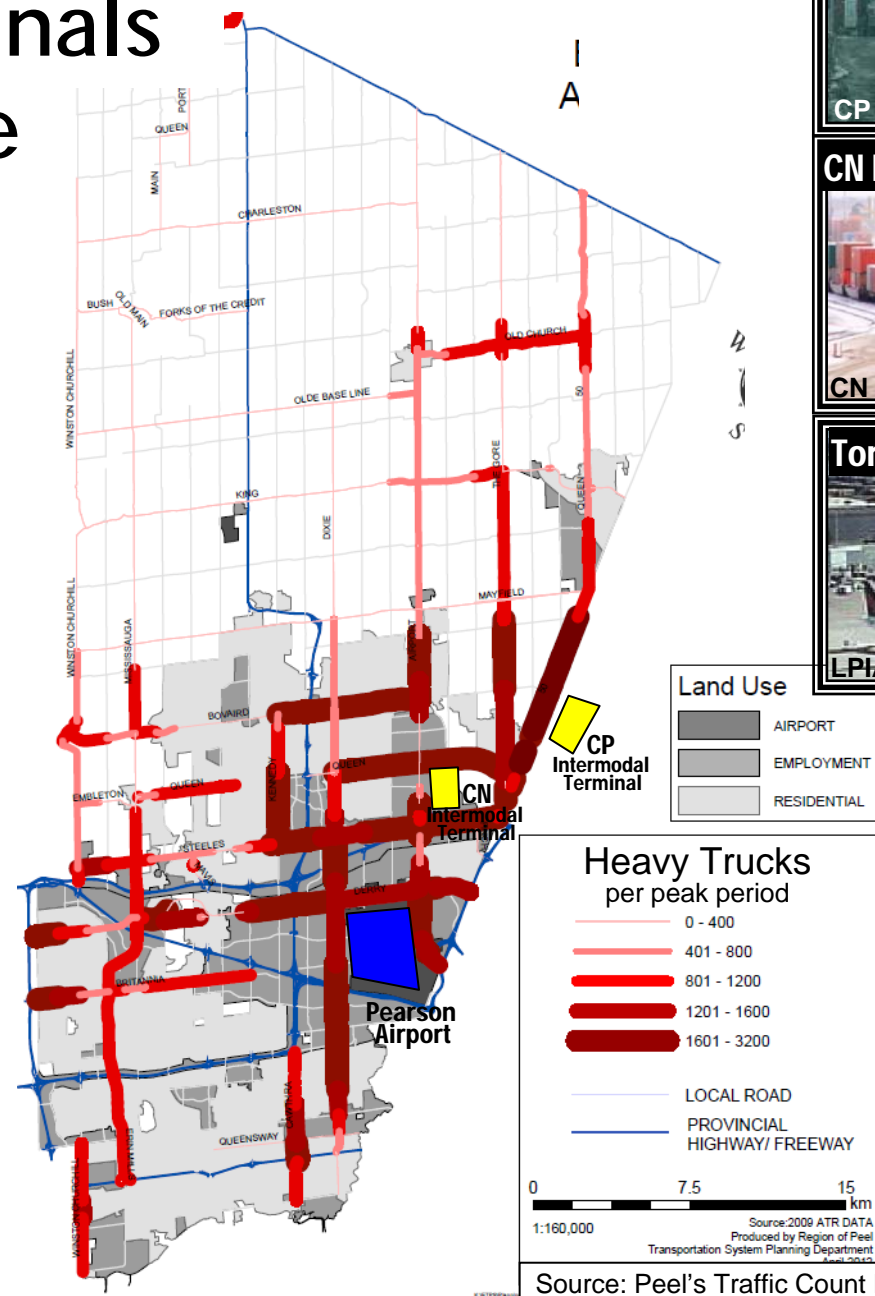
Truck Movement in Peel Region



* Source: Ministry of Transportation - Commercial Vehicle Survey 2008

Peel Goods Movement >>

Freight Terminals in Peel Create Intensive Truck Flows



Source: Peel's Traffic Count Program

Each Day in Peel



- Between Peel and Ontario
 - Today: 23,000 trucks carrying \$600 million goods
 - 30 years later: 40,000 trucks carrying \$1 billion goods
- Between Peel and Quebec
 - Today: 1,200 trucks carrying \$60 million goods
 - 30 years later: 1,900 trucks carrying \$100 million goods
- Between Peel and the US:
 - Today: 3,300 trucks carrying \$160 million goods
 - 30 years later: 5,200 trucks carrying \$270 million goods

*Source: MTO

Peel Goods Movement >>

Region of Peel
Working for you

Peel's Economy relies on Goods Movement



- Peel is “Canada’s fastest growing and most productive freight hub uniquely served by all freight modes”
- Transportation/warehousing is an essential part of Peel’s economy (2x GTHA share)
- Ontario accounts for 2/3 of total US-Canada trade value
- Peel generates 25% of Ontario’s total value of goods
- Accounts for 221,000 jobs (30% manufacturing, wholesale, transportation, trade, warehousing)
- Contributes \$21 billion the economy
- Allows \$1.5 billion worth of goods to move through the Region each day
- Cost of congestion today → \$6 Billion / year; 30 years later → 15 Billion / year

* Source: MTO, Region of Peel

Peel Goods Movement >>

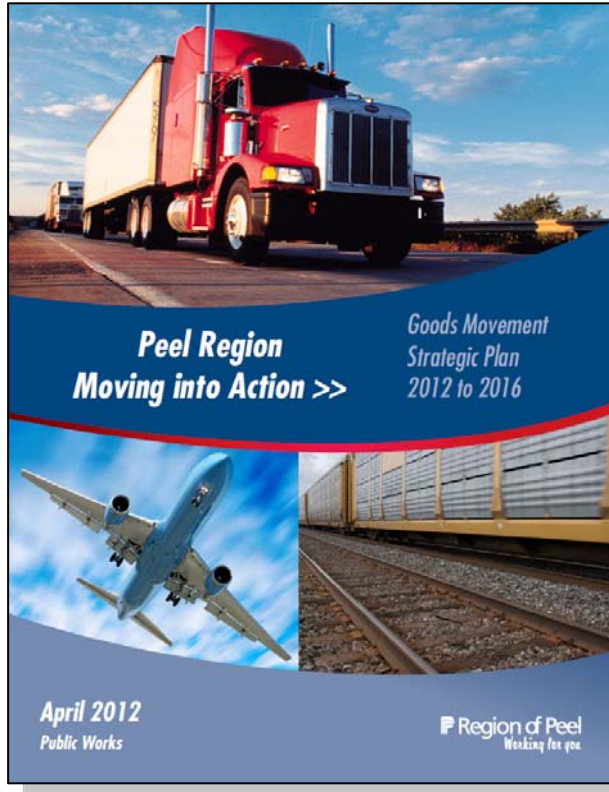
Region of Peel
Working for you

Goods Movement: A Priority in Peel



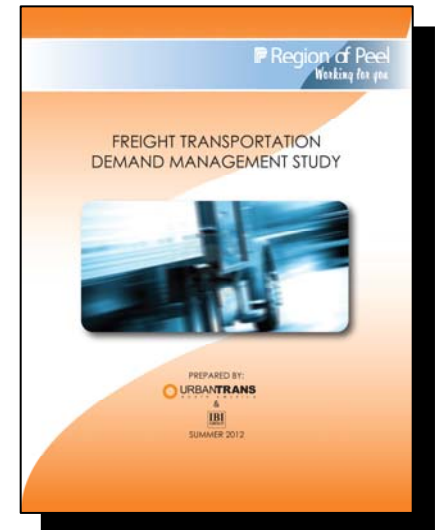
- Term of Council Priority 15:
 - “Improve the efficiency of goods movement in Peel in collaboration with Peel Goods Movement Task Force”
- Peel Goods Movement Task Force formed as a partnership
 - Public and private sector work together to address existing/future opportunities and challenges
- 4 strategic directions with 23 action items to be addressed over the next five years
 - Infrastructure improvements
 - Partnership, communication, advocacy
 - Systems optimization
 - Planning and forecasting

Goods Movement Strategic Plan



23 Action Items

e.g. Goods Movement Network Study
Freight Travel Demand Management Study



Questions:

- The Region and other public/private sectors have come up with a Peel Goods Movement Strategic Plan with 23 action items to support businesses. Peel provides strong leadership in goods movement in the GTHA. How can we best continue to improve Goods Movement in Peel?

Growing Where We Invest

Region of Peel Growth Management Workshop



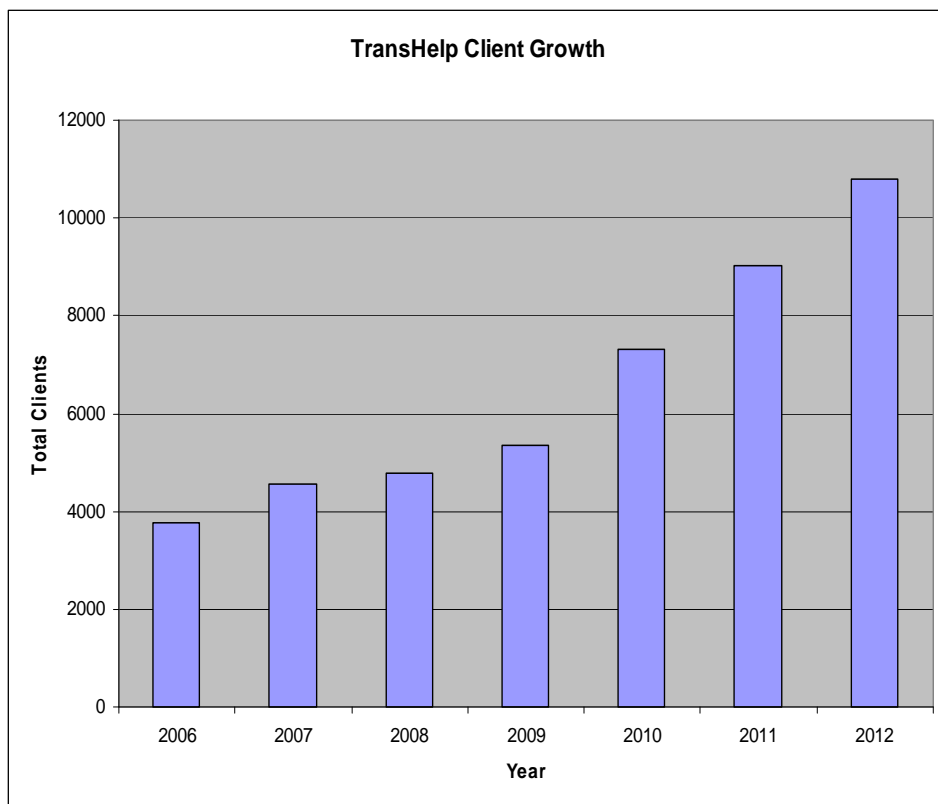
Accessible Transportation

Accessible Transportation Service Delivery

Mission Statement: A quality regional service working together to enhance the lives of those unable to use conventional transit.

What are the challenges to providing accessible transportation to Peel residents with conditions that limit their ability to take conventional transit?

Accessible Transportation Growth



How will population growth impact service delivery?

What are some of the partnering opportunities we should explore to address the anticipated demand?

Growing Where We Invest

Region of Peel Growth Management Workshop

Asset Management



CHALLENGES AND SOLUTIONS

The Region uses asset management strategies to plan for the challenges presented by growth

Challenges

- Growing (lane km) road network
- Average age of infrastructure increasing
- Major 6 lanes urban roads coming due for rehabilitation
- Increased costs to maintain
- Traffic management during construction

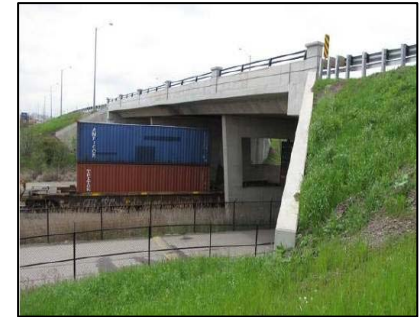


Solutions

- Dynamic asset management systems incorporating planning data
- Invest wisely, at the right time to extend the lifecycle
- Flexible state of good repair based budgets to plan for growth
- Avoid full reconstruction, traffic delays

Planning for Growth Management Using Asset Management Tools and Strategies

- Long-term level of service/budget projections to maintain state of good repair
- Long-term reserve funding plan
- Lifecycle extending design, construction and maintenance strategies



Questions:

- How can Peel best maintain its transportation infrastructure in a state of good repair in light of increasing demands?