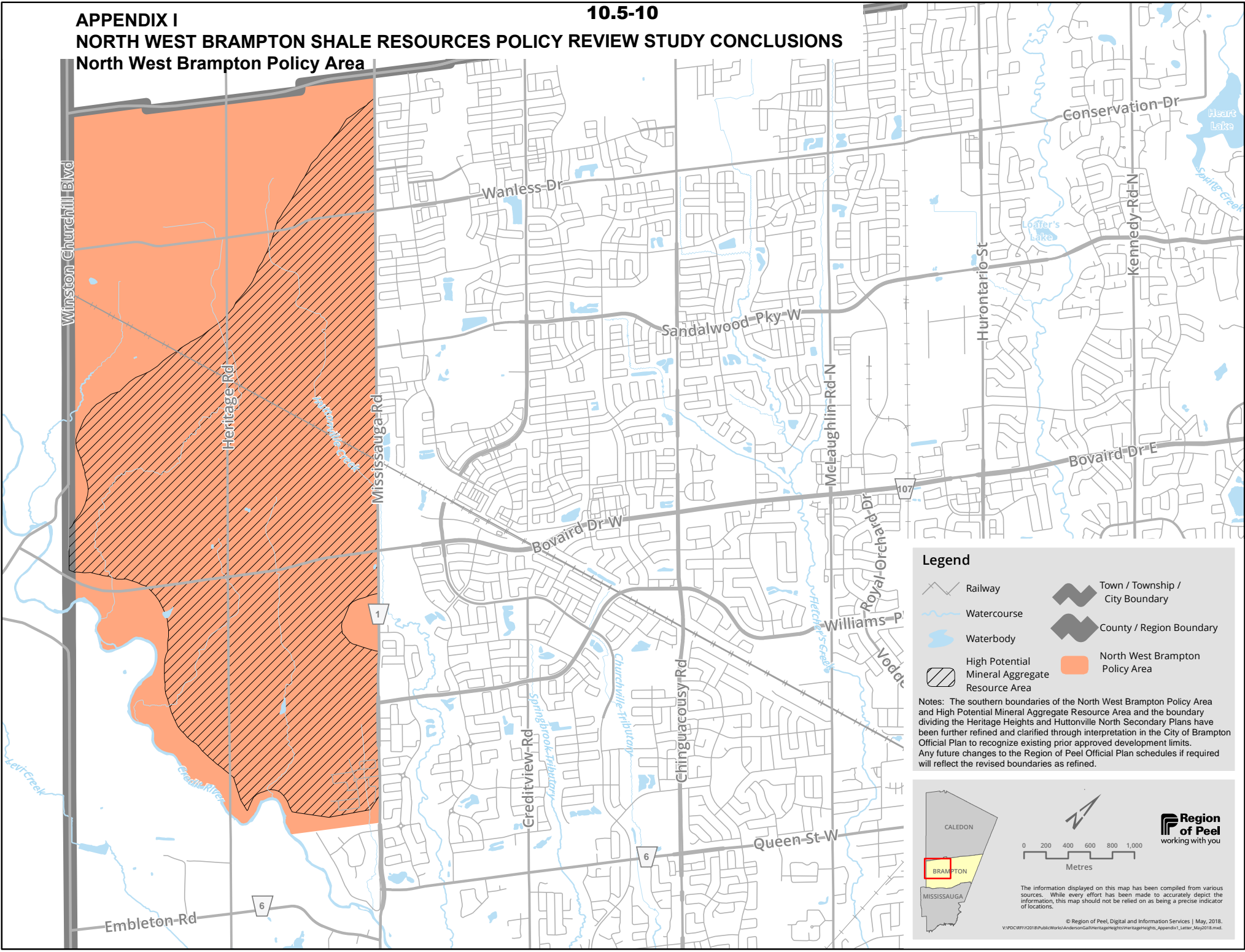


APPENDIX I
10.5-10
NORTH WEST BRAMPTON SHALE RESOURCES POLICY REVIEW STUDY CONCLUSIONS
North West Brampton Policy Area



Legend

	Railway		Town / Township / City Boundary
	Watercourse		County / Region Boundary
	Waterbody		North West Brampton Policy Area
	High Potential Mineral Aggregate Resource Area		

Notes: The southern boundaries of the North West Brampton Policy Area and High Potential Mineral Aggregate Resource Area and the boundary dividing the Heritage Heights and Huttonville North Secondary Plans have been further refined and clarified through interpretation in the City of Brampton Official Plan to recognize existing prior approved development limits. Any future changes to the Region of Peel Official Plan schedules if required will reflect the revised boundaries as refined.

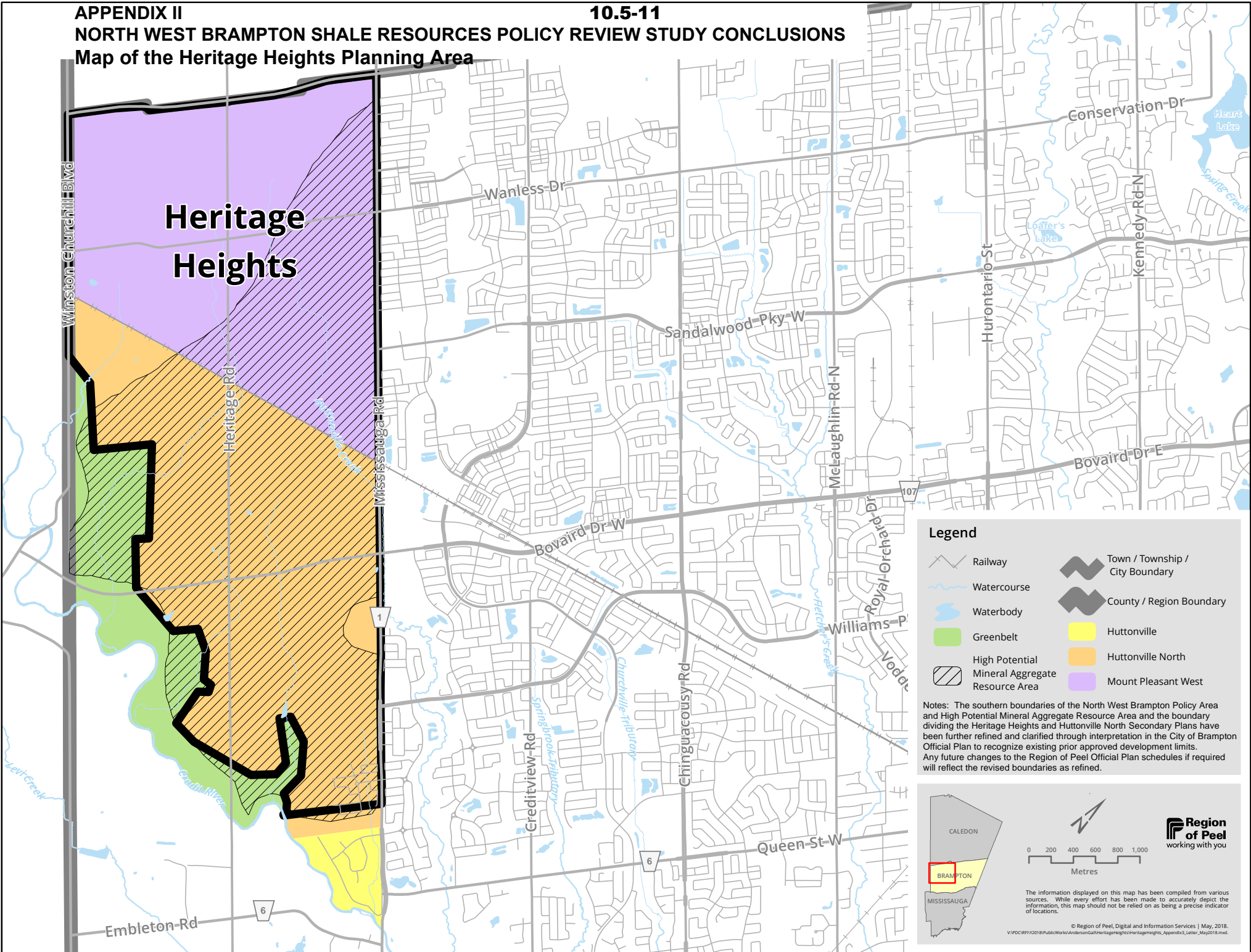
Region of Peel
working with you

0 200 400 600 800 1,000
Metres

The information displayed on this map has been compiled from various sources. While every effort has been made to accurately depict the information, this map should not be relied on as being a precise indicator of locations.

© Region of Peel, Digital and Information Services | May, 2018.
 V:\PDR\1112018\PublicWorks\Anderson\Heritage\Heritage\Appendix I_Letter_May2018.mxd

APPENDIX II
10.5-11
NORTH WEST BRAMPTON SHALE RESOURCES POLICY REVIEW STUDY CONCLUSIONS
Map of the Heritage Heights Planning Area



Legend

	Railway		Town / Township / City Boundary
	Watercourse		County / Region Boundary
	Waterbody		Huttonville
	Greenbelt		Huttonville North
	High Potential Mineral Aggregate Resource Area		Mount Pleasant West

Notes: The southern boundaries of the North West Brampton Policy Area and High Potential Mineral Aggregate Resource Area and the boundary dividing the Heritage Heights and Huttonville North Secondary Plans have been further refined and clarified through interpretation in the City of Brampton Official Plan to recognize existing prior approved development limits. Any future changes to the Region of Peel Official Plan schedules if required will reflect the revised boundaries as refined.

Region of Peel
 working with you

0 200 400 600 800 1,000
 Metres

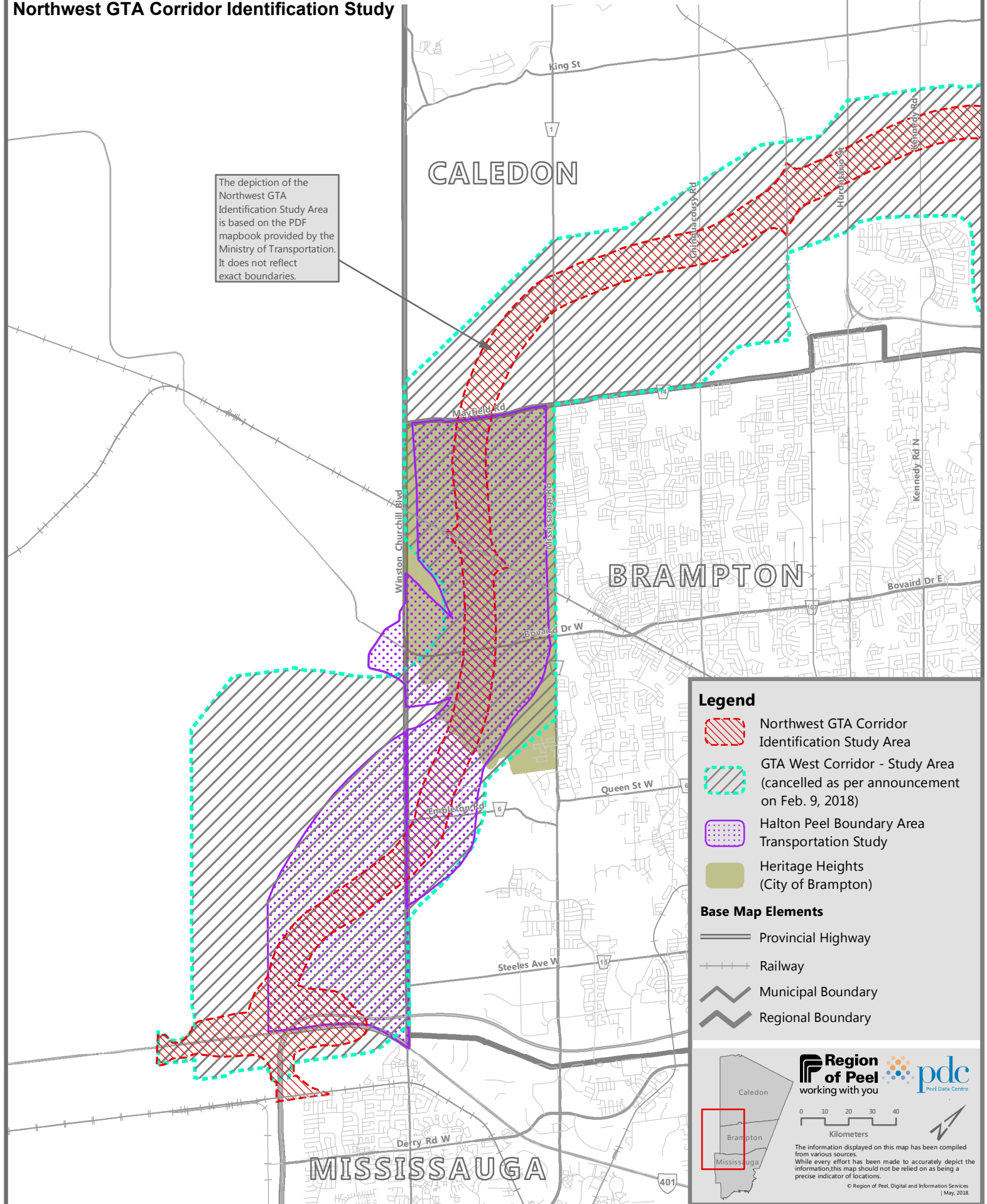
The information displayed on this map has been compiled from various sources. While every effort has been made to accurately depict the information, this map should not be relied on as being a precise indicator of locations.

© Region of Peel, Digital and Information Services | May, 2018.
 V:\PDR\10119\Public\Works\Anderson\Heritage\Heritage\Heritage\Appendix2_Letter_May2018.mxd

NORTH WEST BRAMPTON SHALE RESOURCES POLICY REVIEW STUDY CONCLUSIONS

Areas of Interest Impacted by GTA West Corridor Environmental Assessment Study and Northwest GTA Corridor Identification Study

The depiction of the Northwest GTA Identification Study Area is based on the PDF mapbook provided by the Ministry of Transportation. It does not reflect exact boundaries.



- Legend**
- Northwest GTA Corridor Identification Study Area
 - GTA West Corridor - Study Area (cancelled as per announcement on Feb. 9, 2018)
 - Halton Peel Boundary Area Transportation Study
 - Heritage Heights (City of Brampton)

- Base Map Elements**
- Provincial Highway
 - Railway
 - Municipal Boundary
 - Regional Boundary

Region of Peel working with you

pdc Peel Data Centre

0 10 20 30 40 Kilometers

The information displayed on this map has been compiled from various sources. While every effort has been made to accurately depict the information, this map should not be relied on as being a precise indicator of locations.

© Region of Peel Digital and Information Services | May, 2018

APPENDIX IV - Shale Protection Scenarios

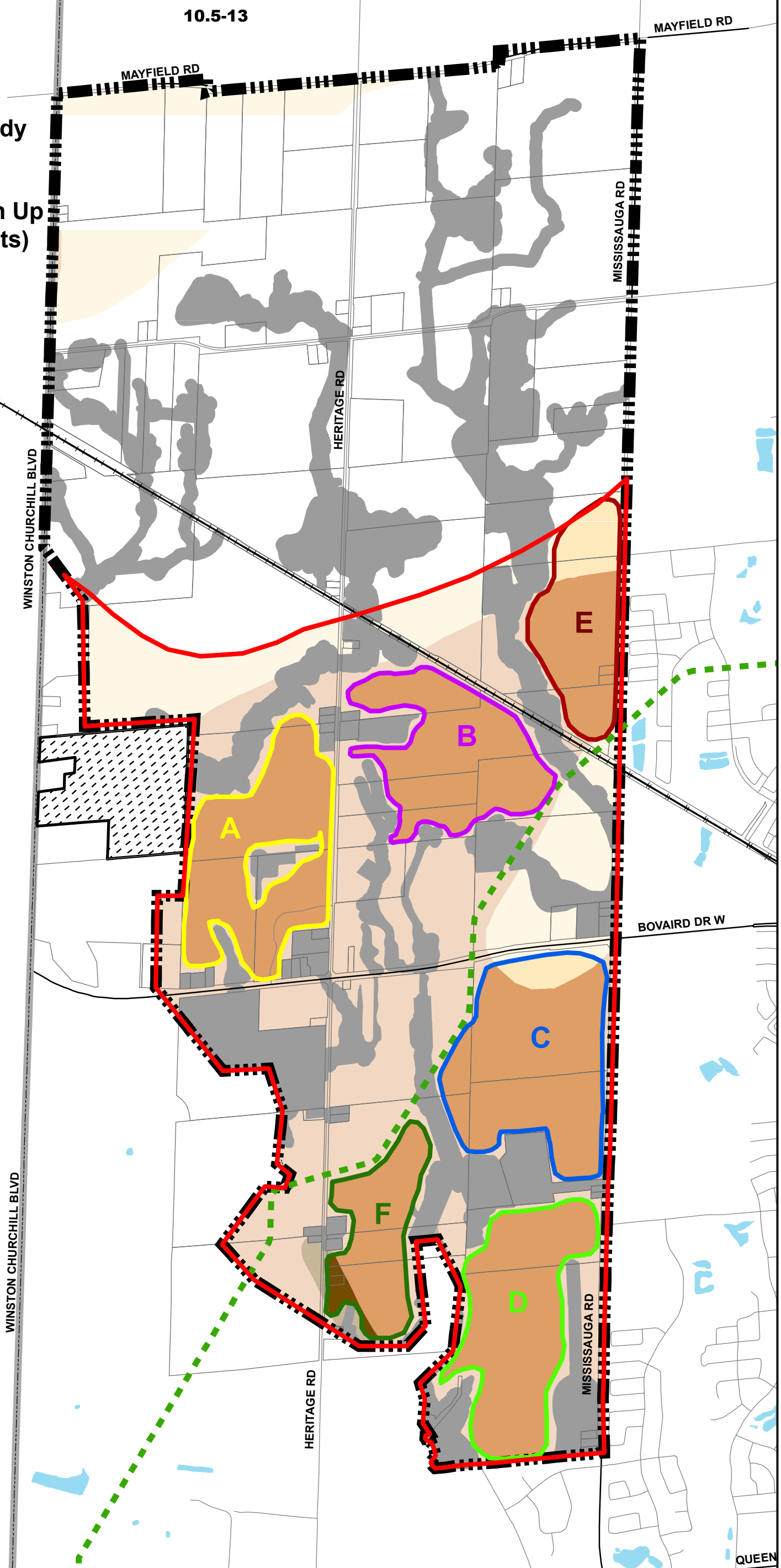
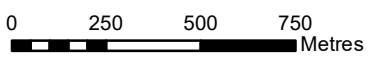
North West Brampton Shale Resources Policy Review Study Conclusions

Scenario 1 - Partial Protection Up to 8m (Net of Major Constraints)

Partial Protection Scenario

This scenario protects areas A, B, C, D, E and F. This grouping of properties represents large areas of land with shale protection potential. The lands are predominately up to 8m of overburden thickness.

Study Area	1688ha
Shale Resource	
Drift Thickness (net constraints)	
Less Than 1m	6ha
1m to 8m	458ha
8m to 15m	186ha



Legend

- Boundary of NWBPA - 1688ha
- Recommended 'Area of Interest' - 753ha
- Constraint Areas - 344.2ha
- Norval Quarry Application - 35ha
- TransCanada Pipeline
- Canadian National Railway - 37.8ha

Queenston Formation

- Drift Thickness**
- Less than 1 m
 - 1 m to 8 m
 - 8 m to 15 m

Source: Mineral resource data provided by ARIP 165 and ARIP 165-REV. Copyright Queens Printer 2018



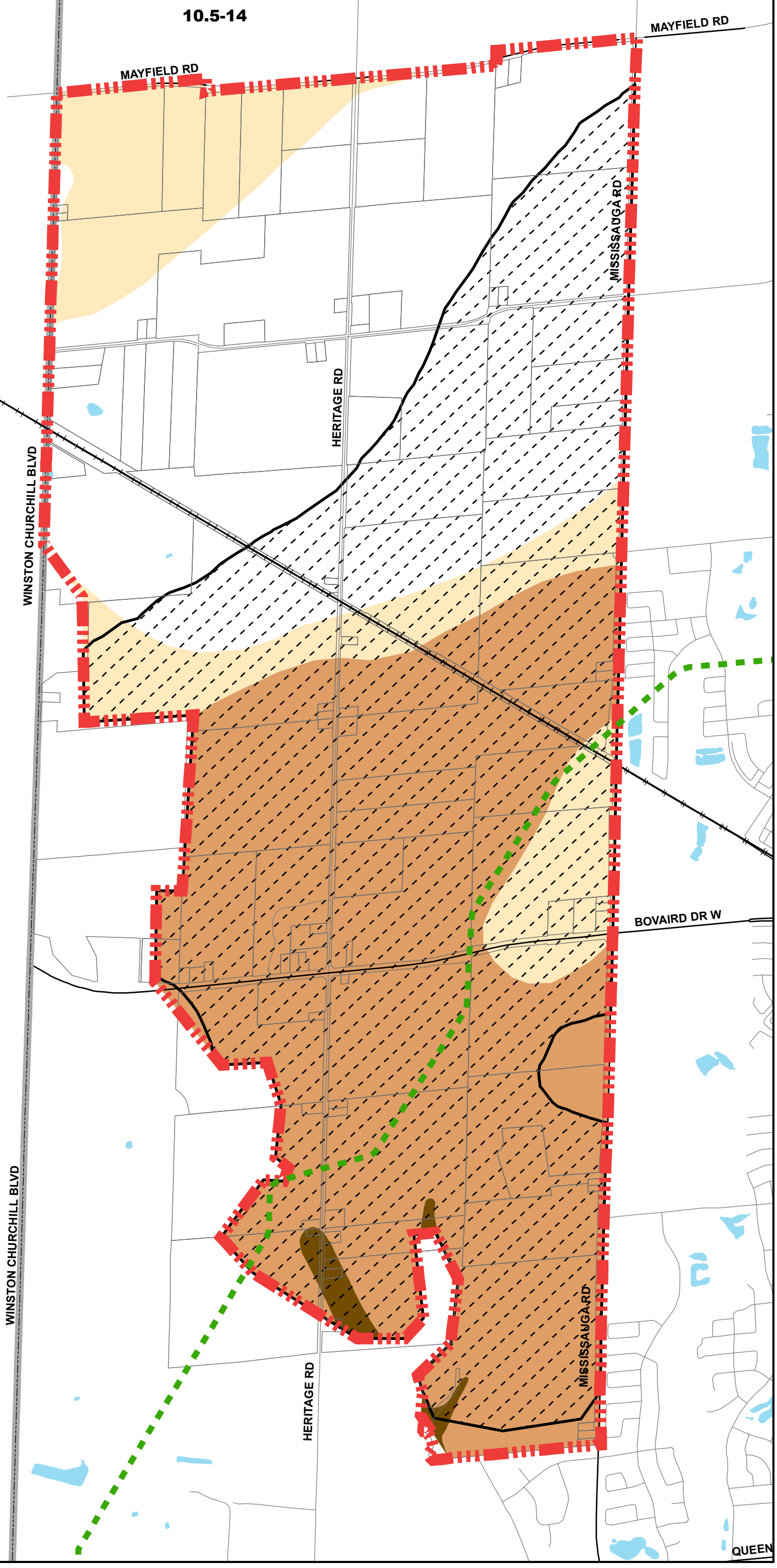
**APPENDIX IV- Shale
Protection Scenarios**

**North West Brampton Shale
Resources Policy Review
Study Conclusions**

**Scenario 2 -
Full Protection (Status Quo)**

This scenario protects all areas in the North West Brampton Policy Area west of Mississauga Road as currently designated in the City of Brampton Official Plan.

Study Area 1688 ha



Legend

- Full Protection Area Boundary
- HPMARA – Bedrock (Region of Peel Official Plan, Schedule C)
- TransCanada Pipeline
- Canadian National Railway

Queenston Formation

- Drift Thickness**
- Less than 1 m
 - 1 m to 8 m
 - 8 m to 15 m

Source:
Mineral resource data provided
by ARIP 165 and ARIP 165-REV.
Copyright Queens Printer 2018



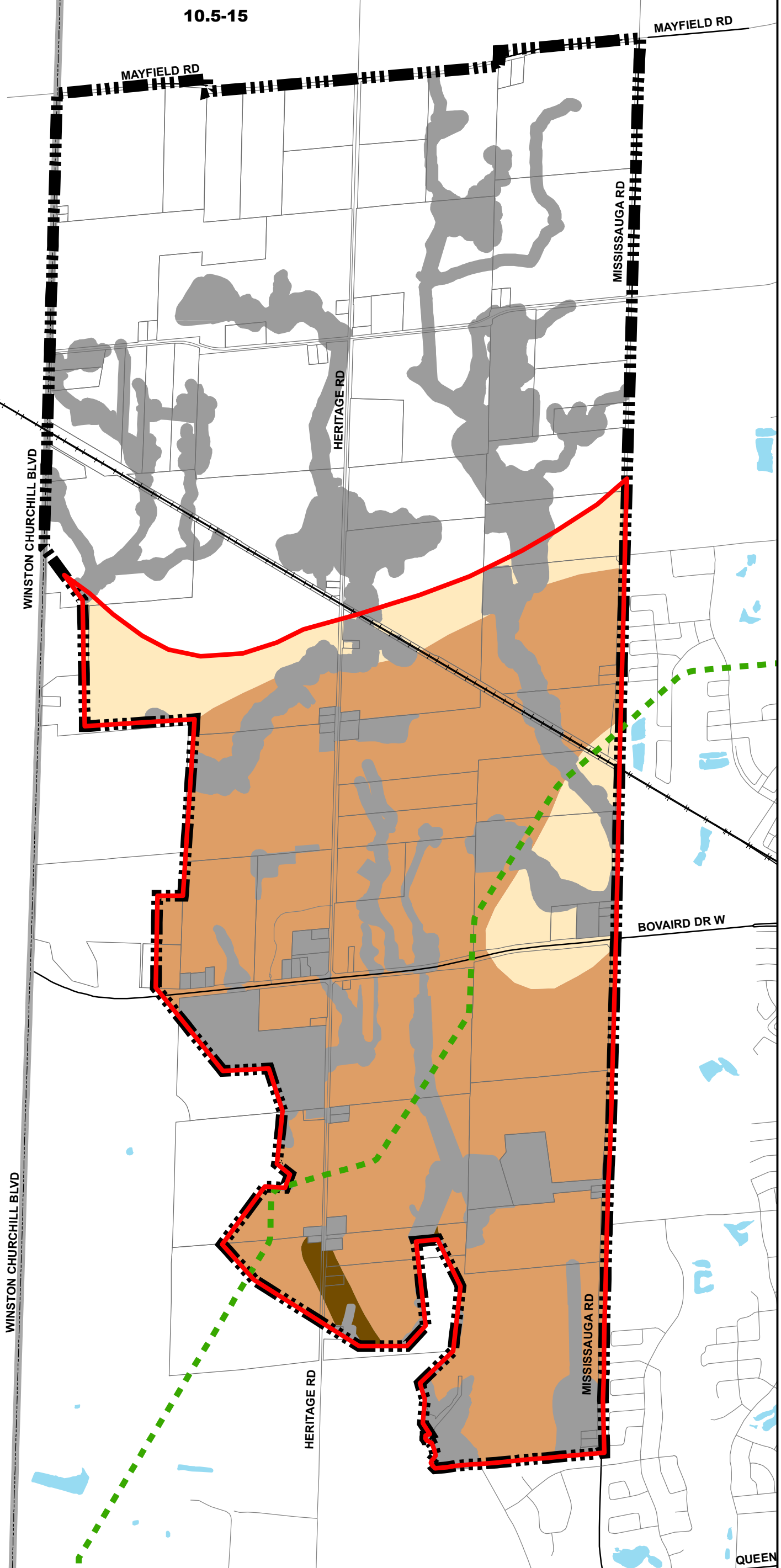
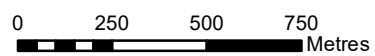
APPENDIX IV- Shale Protection Scenarios

North West Brampton Shale Resources Policy Review Study Conclusions

Scenario 3 -Full Protection Up to 15m of Drift Thickness in the Area of Interest

This scenario protects all areas up to 15m of drift thickness in the area of interest.

Study Area	1688 ha
Shale Resources	
Drift Thickness (net constraints)	
Less Than 1m	8ha
1m to 8m	458ha
8m to 15m	186ha



Legend

- Boundary of NWBPA
- Recommended 'Area of Interest'
- Constraint Areas
- TransCanada Pipeline
- Canadian National Railway

Queenston Formation

- Less than 1 m
- 1 m to 8 m
- 8 m to 15 m

Source: Mineral resource data provided by ARIP 165 and ARIP 165-REV. Copyright Queens Printer 2018

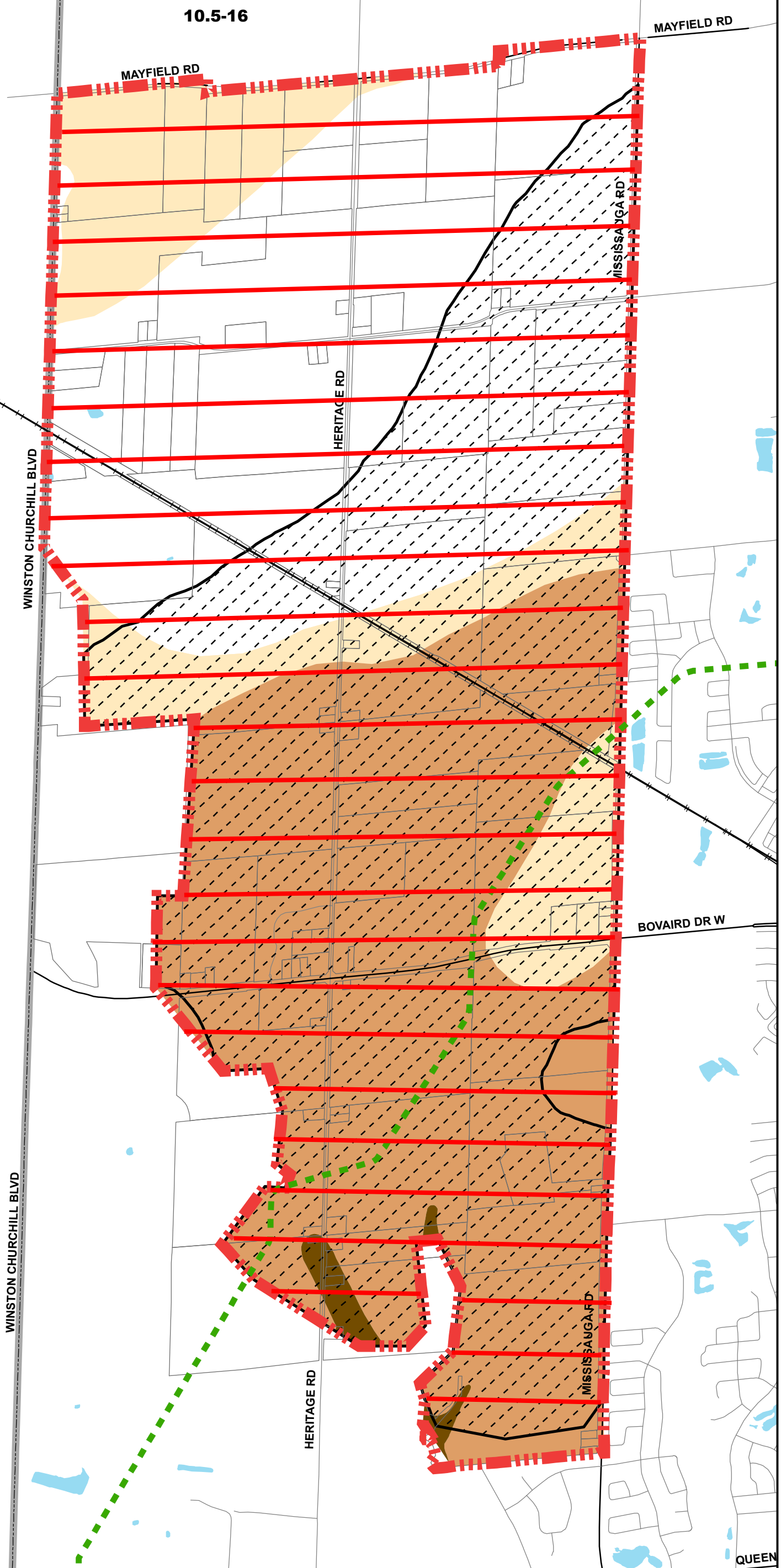


APPENDIX IV- Shale Protection Scenarios


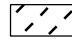

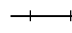
North West Brampton Shale Resources Policy Review Study Conclusions

Scenario 4 - Full Removal of Shale Protection

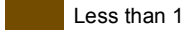
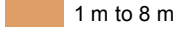
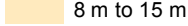
This scenario removes shale protection in all areas in the North West Brampton Urban Area west of Mississauga Road except in the Greenbelt Plan Area.



Legend

-  Full Removal of Protection Area Boundary
-  HPMARA – Bedrock (Region of Peel Official Plan, Schedule C)
-  TransCanada Pipeline
-  Canadian National Railway

Queenston Formation

- Drift Thickness**
-  Less than 1 m
 -  1 m to 8 m
 -  8 m to 15 m

Source:
Mineral resource data provided
by ARIP 165 and ARIP 165-REV.
Copyright Queens Printer 2018

APPENDIX V

NORTH WEST BRAMPTON SHALE RESOURCES POLICY REVIEW STUDY CONCLUSIONS

Applications for Official Plan Amendments to Remove Shale Protection Policies

- 1) **Name of Applicant:** Osmington Inc.
Application Date: March 2010
Application Request: Site specific exemption from the Regional of Peel Official Plan Policy 5.3.4.2.2 (f)(v) and associated Schedules C,D, E in order to facilitate the development of a Regional Centre.
Corresponding Local Official Plan Amendment: Filed March 2010. Application to amend the City of Brampton Official Plan and Zoning By-law to remove the lands owned by Osmington Inc. from the Heritage Heights Secondary Plan area and to include these lands within the Mount Pleasant Secondary Plan Area. In June 2014 the City of Brampton Approved the OPA (OPA101) that moved the Osmington Lands into the Mount Pleasant Secondary Plan area.

- 2) **Name of Applicant:** Heritage Heights Landowners Group.
Application Date: January 2017
Application Request: Seek to remove those Official Plan policies which require the protection of shale resources which exist in the North-West Brampton Policy Area (NWBPA). The application applies to lands within the North West Brampton Planning Area.
Corresponding Local Official Plan Amendment: Filed on September 2017. The Pre-Consultation Application proposes the removal of shale protection policies from the City's Official Plan. Specifically, the deletion of Section 4.15.4 (and subsections) and the removal of the North West Brampton Policy Area (NWBPA) designation on Schedule "F".

Applications for a Local Official Plan Amendment

- 1) **Name of Applicant:** Heathwood Homes / MCN (Heritage) Inc. (Cortel)
Application Date: February 2014
Application Request: To amend the City of Brampton Official Plan to add the Heathwood and Cortel lands to the Mount Pleasant Secondary Plan as a Special Policy Area.
Corresponding Regional Official Plan Amendment: Preconsultation was held April 2016. To date, a Regional Official Plan Amendment has not been received.