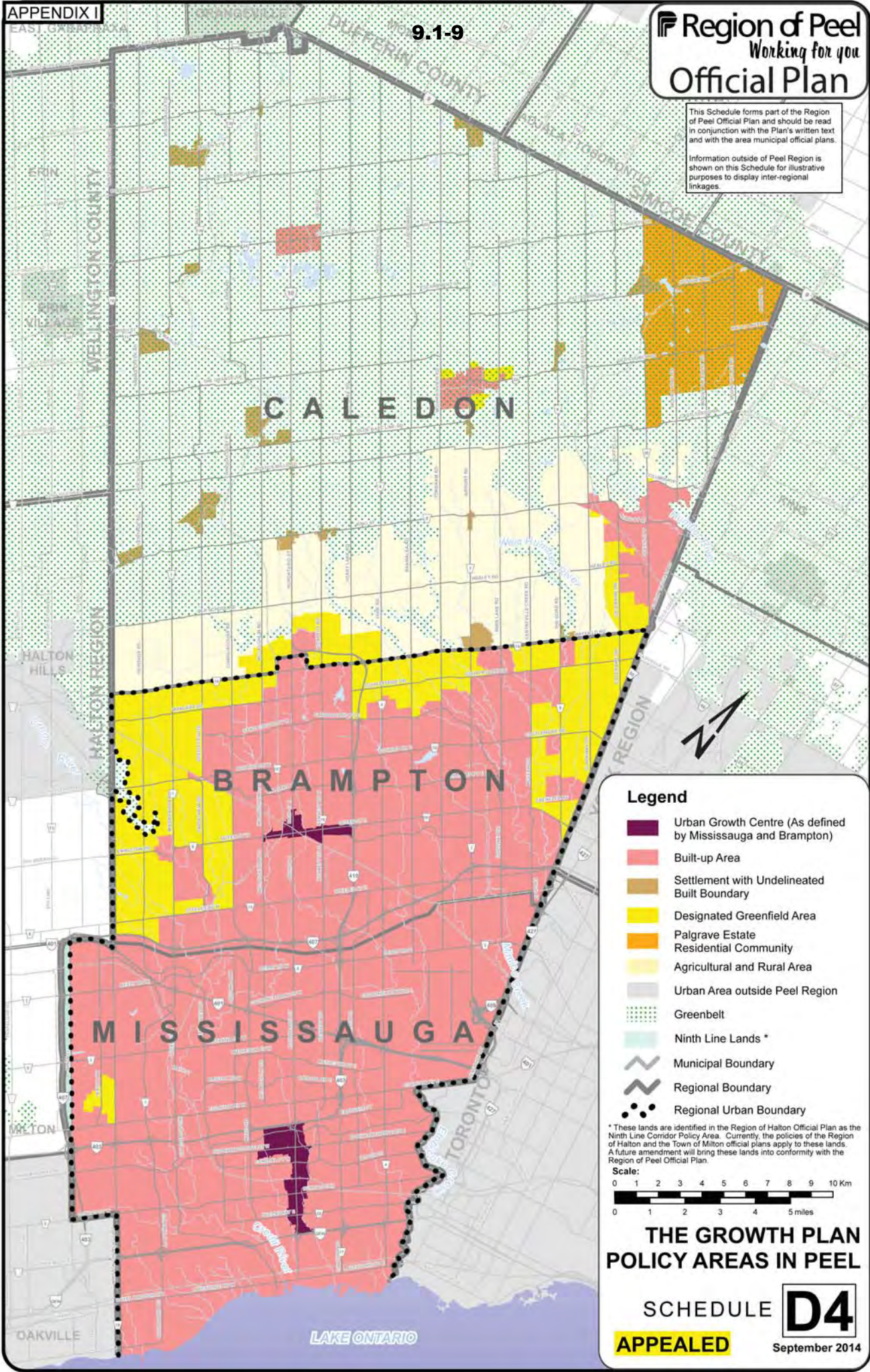


This Schedule forms part of the Region of Peel Official Plan and should be read in conjunction with the Plan's written text and with the area municipal official plans.

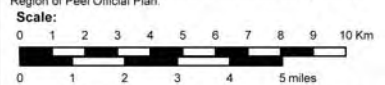
Information outside of Peel Region is shown on this Schedule for illustrative purposes to display inter-regional linkages.



Legend

- Urban Growth Centre (As defined by Mississauga and Brampton)
- Built-up Area
- Settlement with Undelineated Built Boundary
- Designated Greenfield Area
- Palgrave Estate Residential Community
- Agricultural and Rural Area
- Urban Area outside Peel Region
- Greenbelt
- Ninth Line Lands *
- Municipal Boundary
- Regional Boundary
- Regional Urban Boundary

* These lands are identified in the Region of Halton Official Plan as the Ninth Line Corridor Policy Area. Currently, the policies of the Region of Halton and the Town of Milton official plans apply to these lands. A future amendment will bring these lands into conformity with the Region of Peel Official Plan.



**THE GROWTH PLAN
POLICY AREAS IN PEEL**