

Settlement Area Boundary Expansion



Strategically expand the development boundary to accommodate future residential and employment growth by identifying new Designated Greenfield Areas. In policy, this is known as the **New 2051 Community Area** and considers the natural environment, agricultural system, fiscal impact, heritage resources, efficient use of infrastructure and sustainable development.

Study Objectives & Process

The Settlement Area Boundary Expansion (SABE) Study is being undertaken to provide background and technical work as part of the Municipal Comprehensive Review and in accordance with the requirements of the Growth Plan, Greenbelt Plan, other applicable Provincial Plans, Regional Official Plan and strategic priorities related to managing growth. The SABE study is being undertaken in four phases as follows:



Draft SABE Mapping and Policies

Mapping

A Draft SABE map has been prepared as a result of technical study work and it:

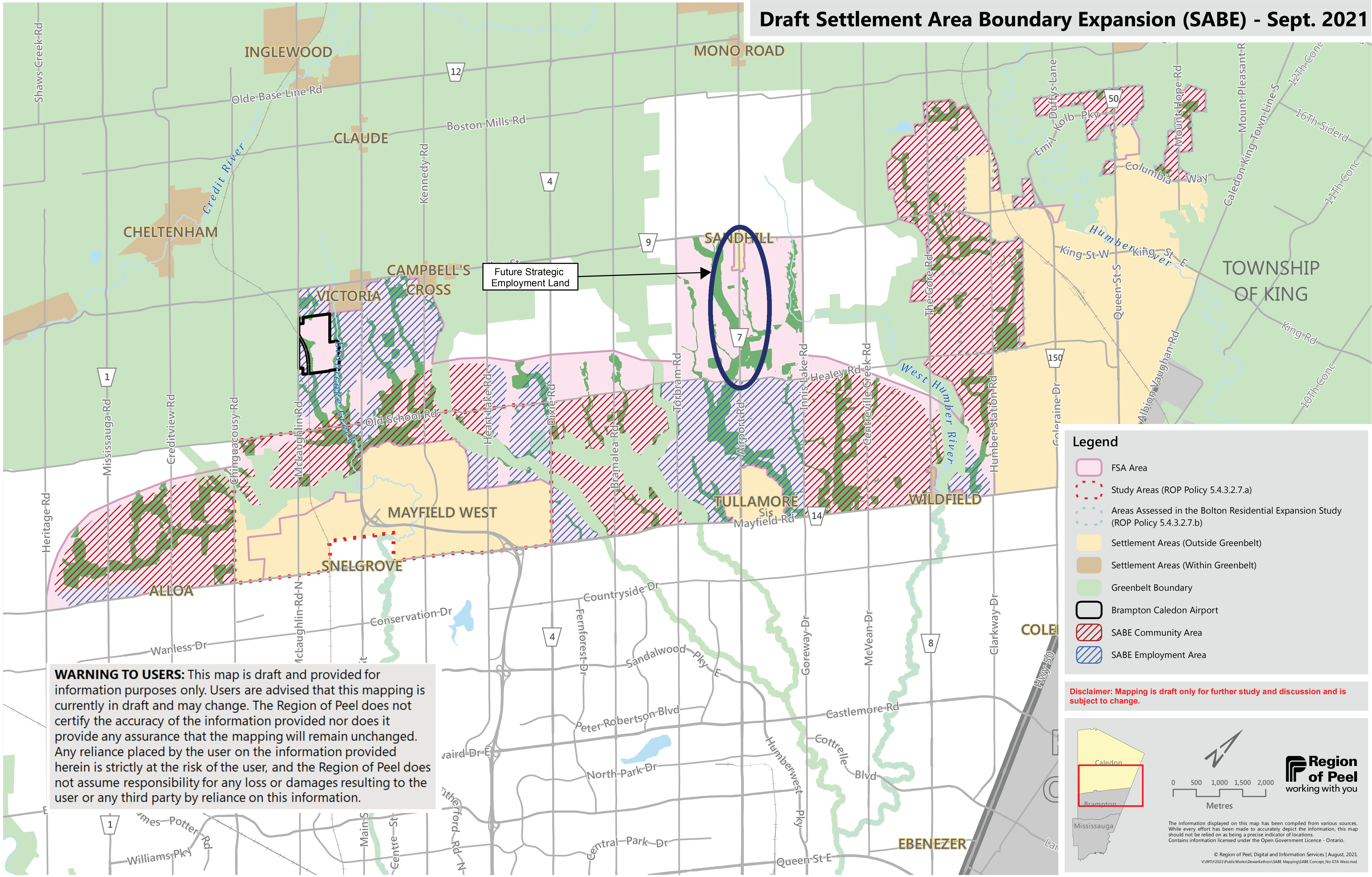
- Is based on the principle of developing complete communities with logical extensions from existing communities and existing services.
- Is planned in a way that can accommodate growth with or without a Provincial highway.
- Implements the land area, and density and intensification targets from the Land Needs Assessment.
- Provides a connected and resilient Greenlands System by excluding natural heritage system features and areas from the developable land needed to accommodate growth.
- Provides employment lands that are viable and will support local and Regional employment opportunities.

Policies

Policies support the findings of the technical studies and address:

- delineation of the new 2051 Community Area and employment area
- staging and sequencing of development, efficient provision of infrastructure, and financial sustainability with a strong Regional role
- ensure future community and employment areas reduce resource consumption, energy use, and carbon footprint of the built environment
- mitigation of impact to agricultural areas
- a structure and approach for the provision of transit and goods movement capacity to support development to 2051

Draft Settlement Area Boundary Expansion (SABE) - Sept. 2021



WARNING TO USERS: This map is draft and provided for information purposes only. Users are advised that this mapping is currently in draft and may change. The Region of Peel does not certify the accuracy of the information provided nor does it provide any assurance that the mapping will remain unchanged. Any reliance placed by the user on the information provided herein is strictly at the risk of the user, and the Region of Peel does not assume responsibility for any loss or damages resulting to the user or any third party by reliance on this information.

Legend

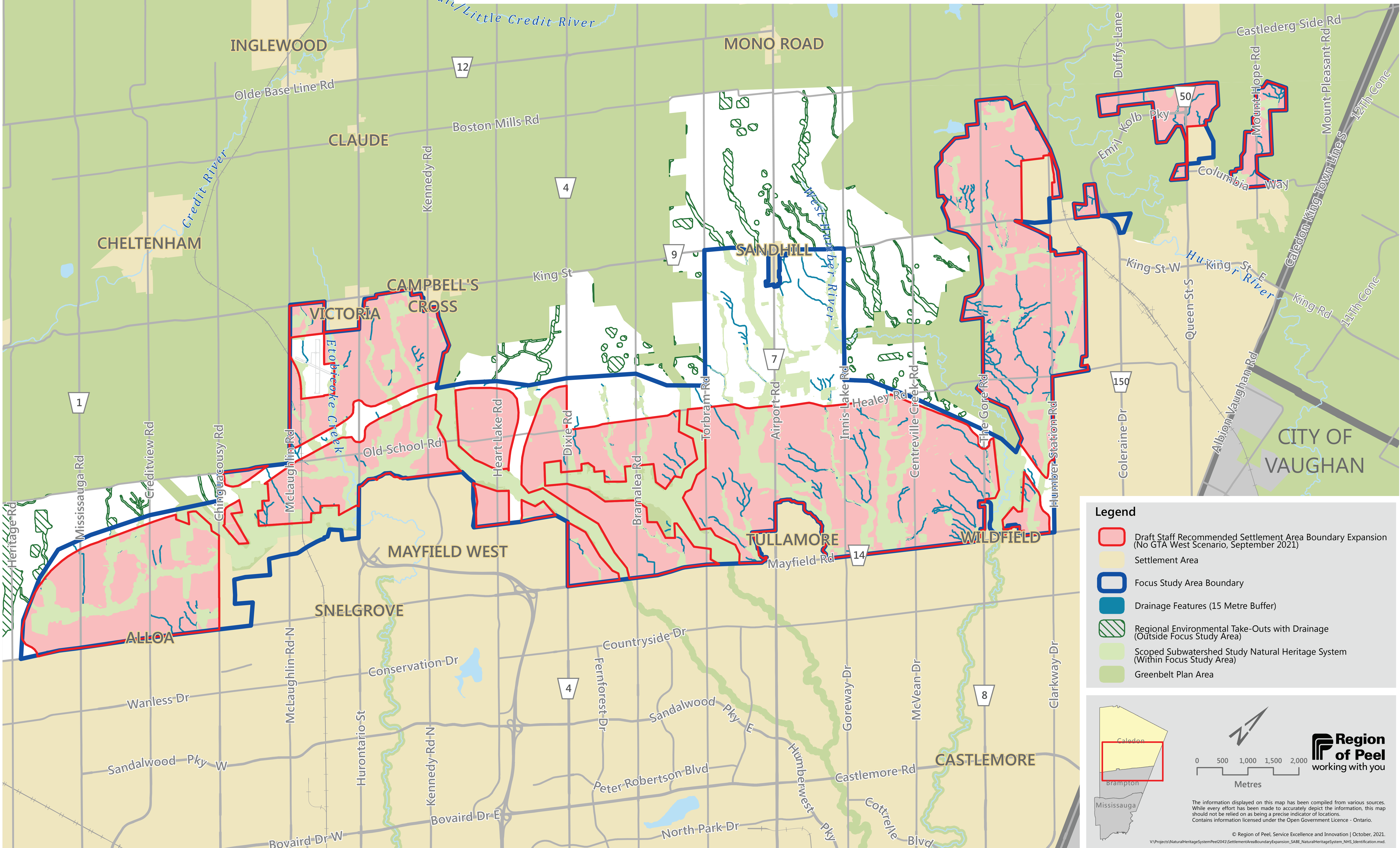
- FSA Area
- Study Areas (ROP Policy 5.4.3.2.7.a)
- Areas Assessed in the Bolton Residential Expansion Study (ROP Policy 5.4.3.2.7.b)
- Settlement Areas (Outside Greenbelt)
- Settlement Areas (Within Greenbelt)
- Greenbelt Boundary
- Brampton Caledon Airport
- SABE Community Area
- SABE Employment Area

Disclaimer: Mapping is draft only for further study and discussion and is subject to change.

The information displayed on this map has been compiled from various sources. While every effort has been made to accurately depict the information, this map should not be relied on as being a precise indicator of locations. Contains information licensed under the Open Government Licence - Ontario.

© Region of Peel, Digital and Information Services | August, 2021. V:\WPY\2021\PublicWorks\Dev\kathryn\SABE Mapping\SABE Concept_No GTA West.mxd.

Settlement Area Boundary Expansion (SABE) – Natural Heritage System (NHS) Identification



Legend

- Draft Staff Recommended Settlement Area Boundary Expansion (No GTA West Scenario, September 2021)
- Settlement Area
- Focus Study Area Boundary
- Drainage Features (15 Metre Buffer)
- Regional Environmental Take-Outs with Drainage (Outside Focus Study Area)
- Scoped Subwatershed Study Natural Heritage System (Within Focus Study Area)
- Greenbelt Plan Area

Region of Peel
working with you

The information displayed on this map has been compiled from various sources. While every effort has been made to accurately depict the information, this map should not be relied on as being a precise indicator of locations. Contains information licensed under the Open Government Licence - Ontario.

© Region of Peel, Service Excellence and Innovation | October, 2021.
V:\Projects\NaturalHeritageSystem\Peel2041\SettlementAreaBoundaryExpansion_SABE_NaturalHeritageSystem_NHS_Identifier.mxd