

# Water Resources



## What are water resources?

Water resources are features and areas such as rivers, streams, ponds, wetlands, and lakes. The Credit River, Humber River, Etobicoke Creek and their tributaries form the major watersheds in Peel.

## What is the Region doing?

- Identifying and protecting a system of water resource features and areas
- Protecting drinking water sources from incompatible land uses
- Providing direction for integrating watershed planning and growth management
- Requiring stormwater master plans
- Ensuring appropriate studies are undertaken so that ground and surface water quantity and quality is protected, improved or restored

## Why are water resource policies important?

- Sustain the Region's social, economic and environmental well-being
- Ensure clean drinking water for residents
- Maintain healthy aquatic and land-based ecosystems
- Protect water resources from the impacts of growth and development

## Regional Official Plan policies will...

- Implement the Provincial policy direction by managing growth in a manner which protects and enhances water resources
- Provide direction to the local municipalities to identify, protect and enhance water resources features and areas
- Protect sources of drinking water from land uses that may have negative impacts



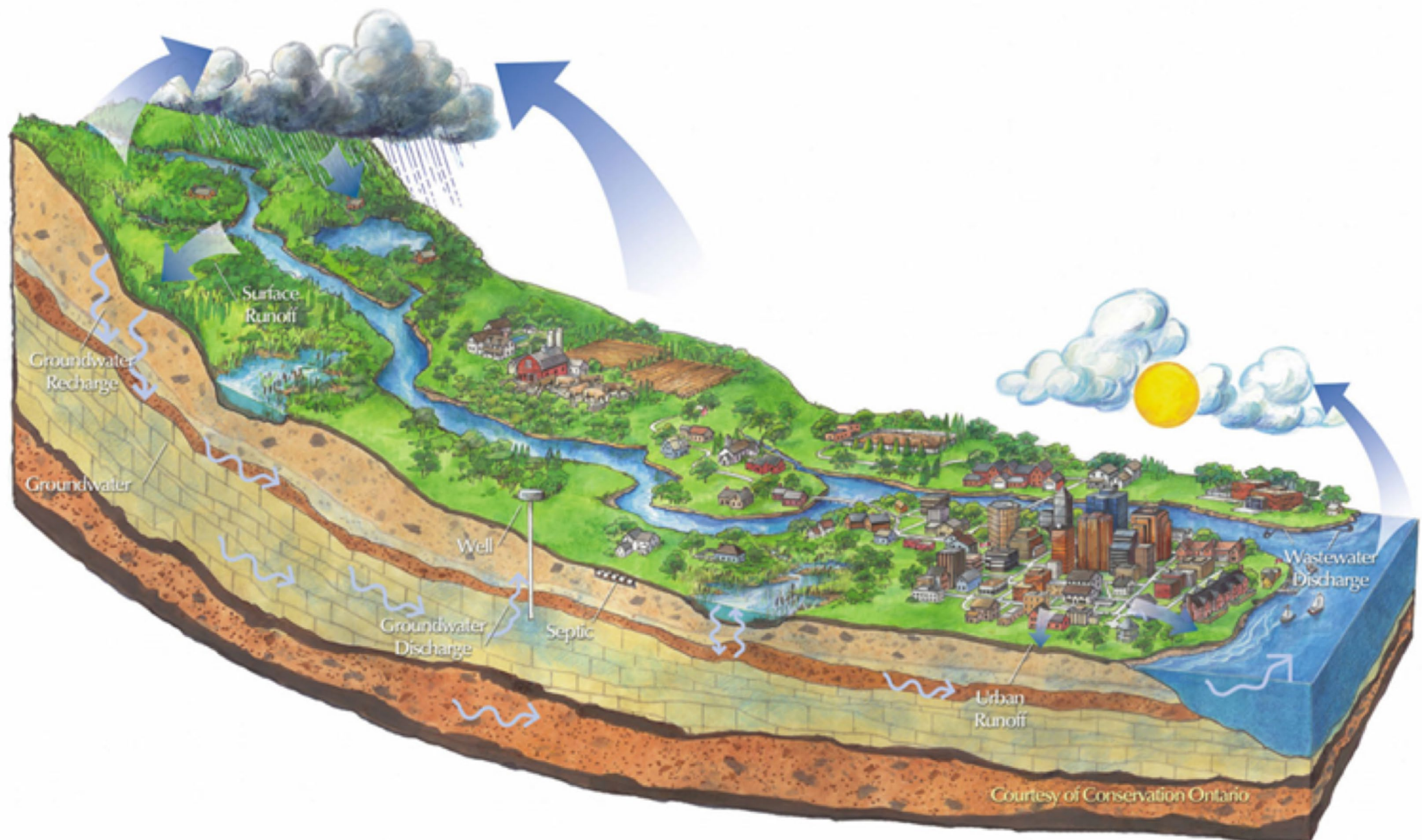
### How can I stay involved?

Follow [@regionofpeel](https://twitter.com/regionofpeel) twitter page or request notification at [planpeel@peelregion.ca](mailto:planpeel@peelregion.ca)

# Water Resources



Water Resources are features and areas such as rivers, streams, ponds, wetlands, and lakes. The Credit River, Humber River, Etobicoke Creek and their tributaries form the major watersheds in Peel.



Source: Conservation Ontario

## Key proposed policies and mapping

### Policies

- Policies now reflect a systems approach to protecting, improving or restoring water resources.
- New and updated policy direction for watershed planning.
- New direction requiring Stormwater Master Plans.
- New policies to protect drinking water sources.
- New policies for Lake Simcoe and the Lake Simcoe Watershed.
- New policies for water resources planning to address flood risks and consider Climate Change.

### Mapping

Update and provide new mapping of water resources to identify:

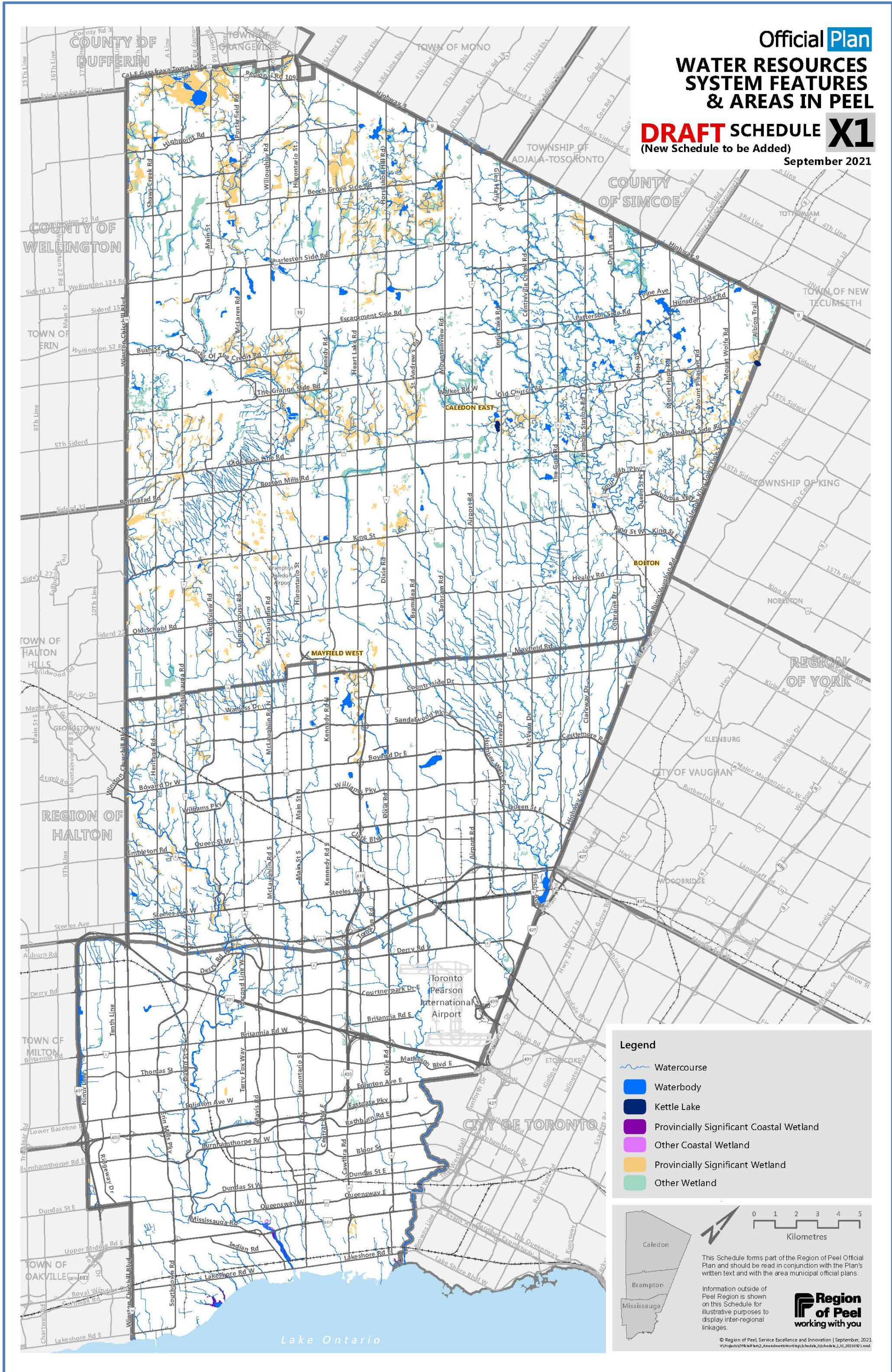
- Water resource system features and areas: watercourses, provincially significant wetlands, coastal wetlands and other wetlands.
- Source water protection plan areas and vulnerable areas: wellhead protection areas, issue contributing areas, intake protection zones, highly vulnerable aquifers, and significant groundwater recharge areas.
- Lake Simcoe Protection Act Watershed Boundary.



# Water Resources



## Water Features and Areas







## Source Water Protection

A multi-barrier approach to protecting sources of municipal drinking water from contamination and overuse.

## Types of source water protection vulnerable areas in Peel

### Wellhead protection area

The area around the wellhead where land use activities have the potential to affect the quality and quantity of water that flows to the well.

### Issue contributing area

An area around a municipal drinking system where activities have contributed or could contribute to elevated concentrations of a particular contaminant in relation to the Ontario Drinking Water Standards.

### Intake protection zone

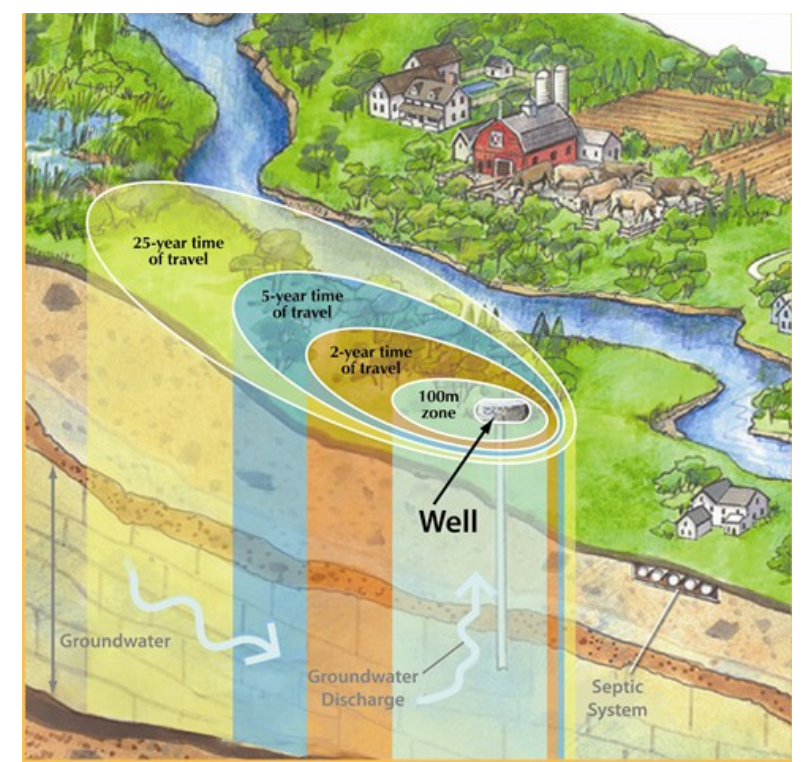
The areas on the surface water and the land surrounding a municipal surface water intake.

### Highly vulnerable aquifer

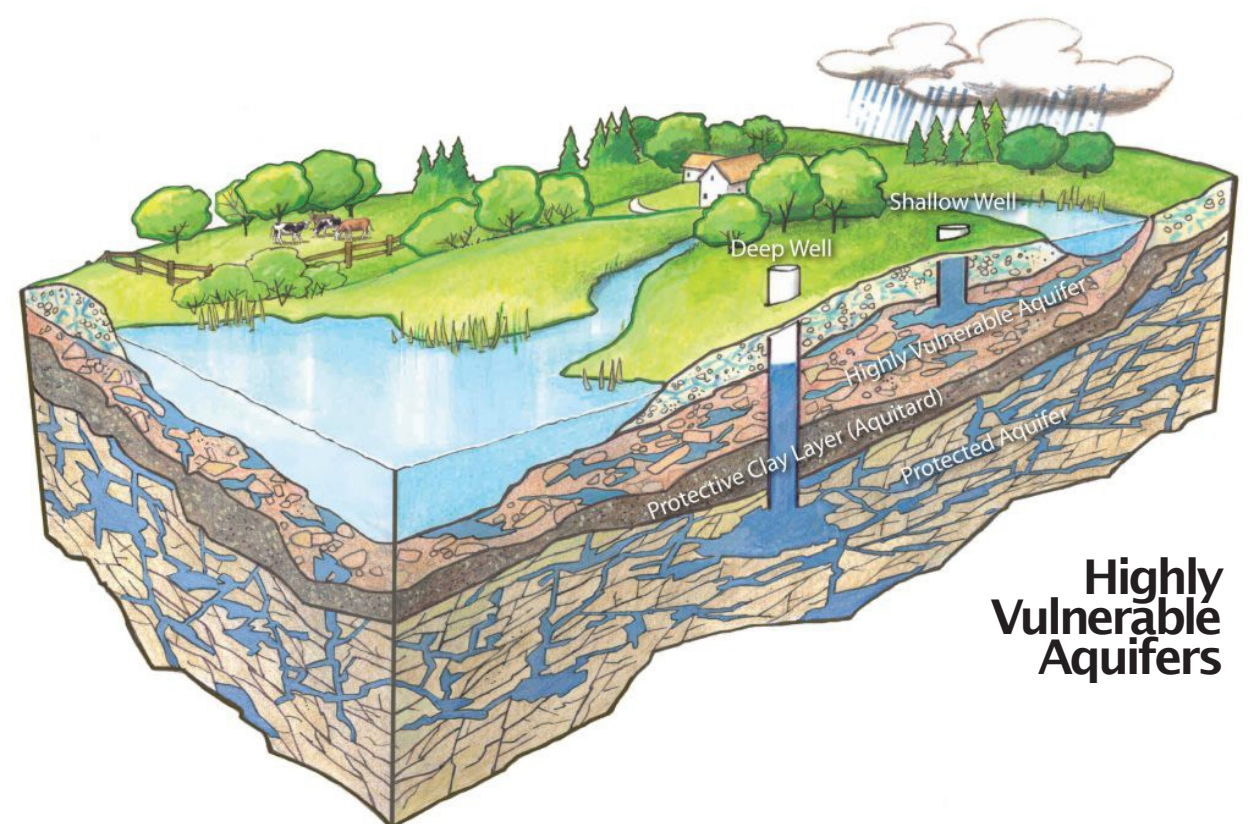
An area underground that contains water that is being withdrawn for human use and is particularly susceptible to contamination because of its location near the ground's surface or where the overlying material in the ground above it is highly permeable.

### Significant groundwater recharge area

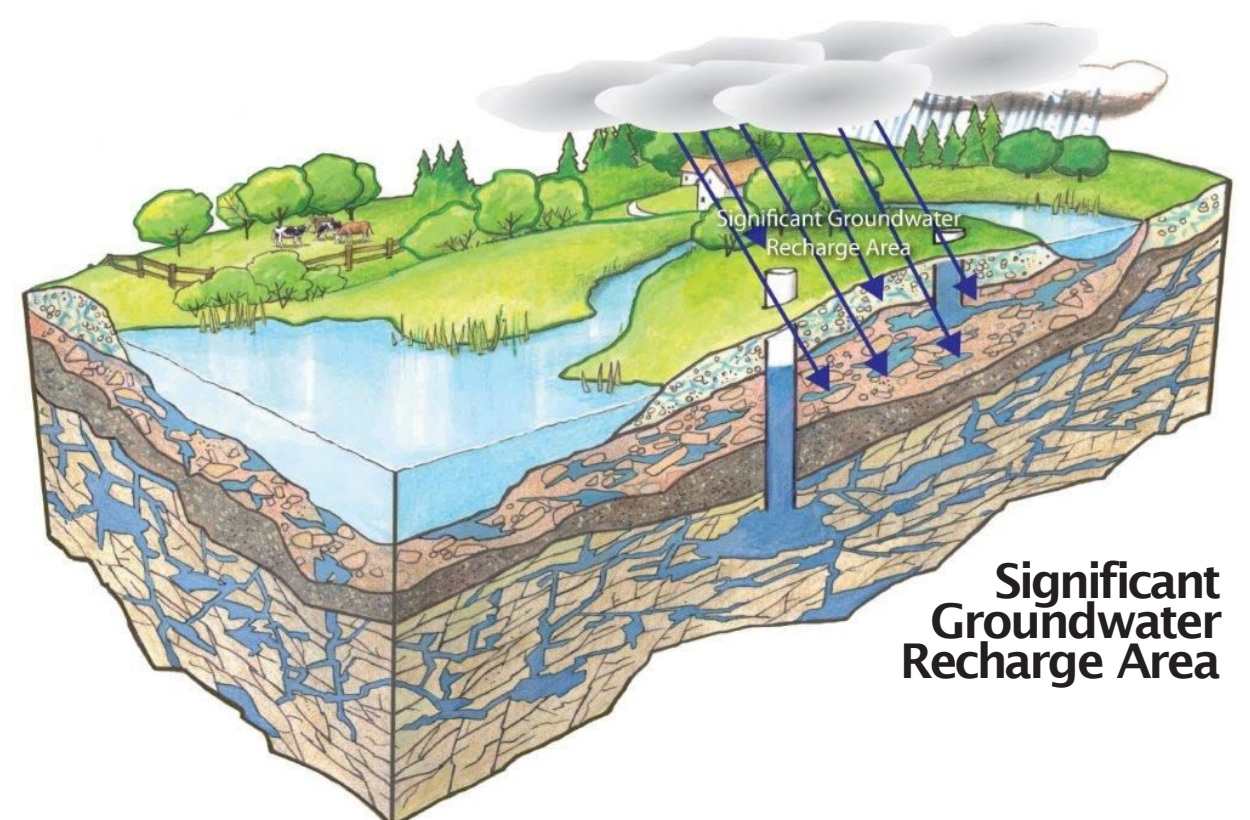
An area where groundwater is replenished through the infiltration of water and where the recharge rate exceeds a specified threshold.



Wellhead Protection Area



Highly Vulnerable Aquifers



Significant Groundwater Recharge Area

Source: Conservation Ontario

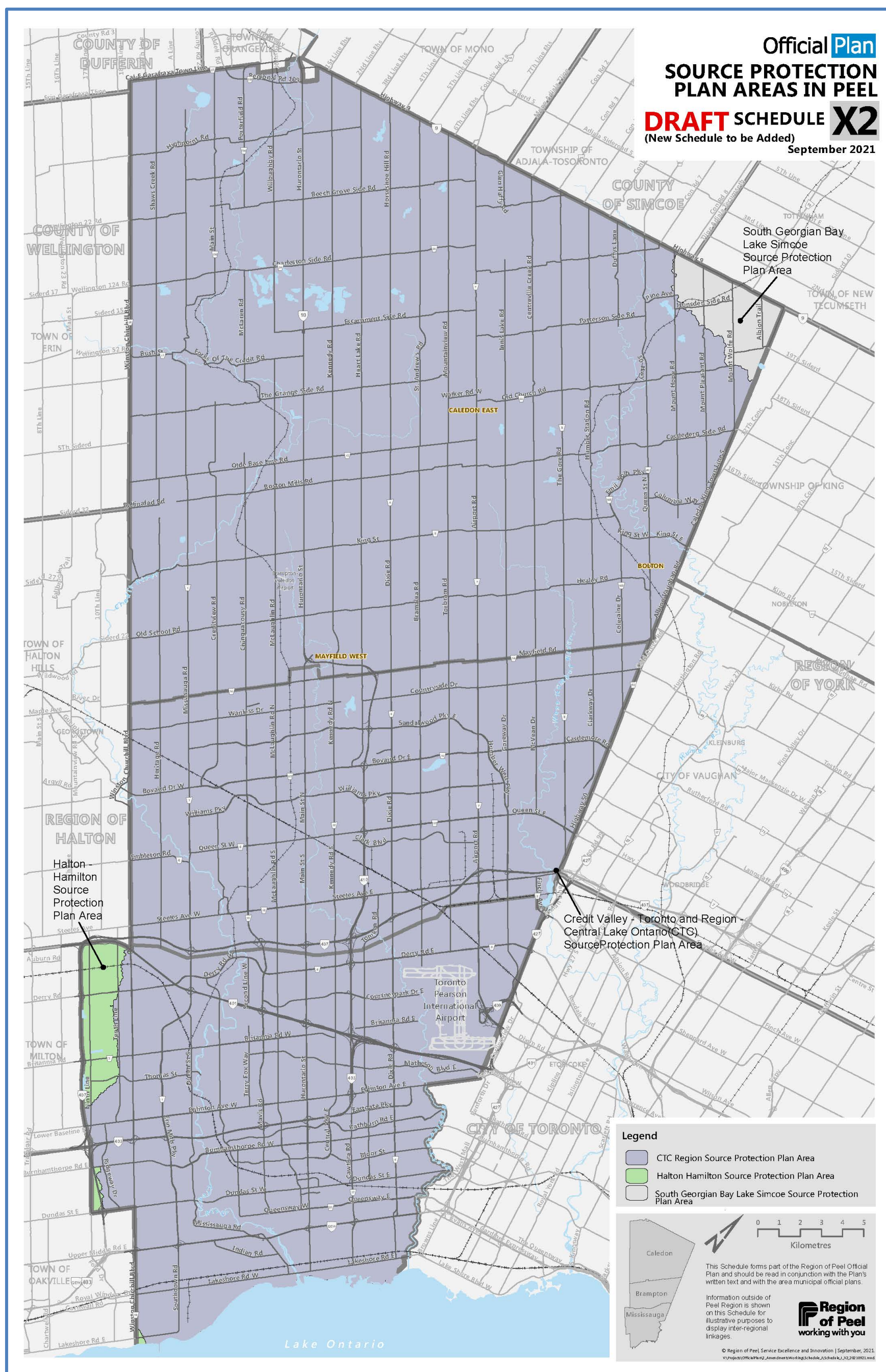




## Source Water Protection

### Key proposed policies and mapping

- Prevent activities from becoming a significant drinking water threat by regulating development and site alteration within vulnerable areas.
- Require appropriate studies to assess whether development and site alteration will be a potential threat to municipal drinking water sources within a vulnerable area.





# Water Resources

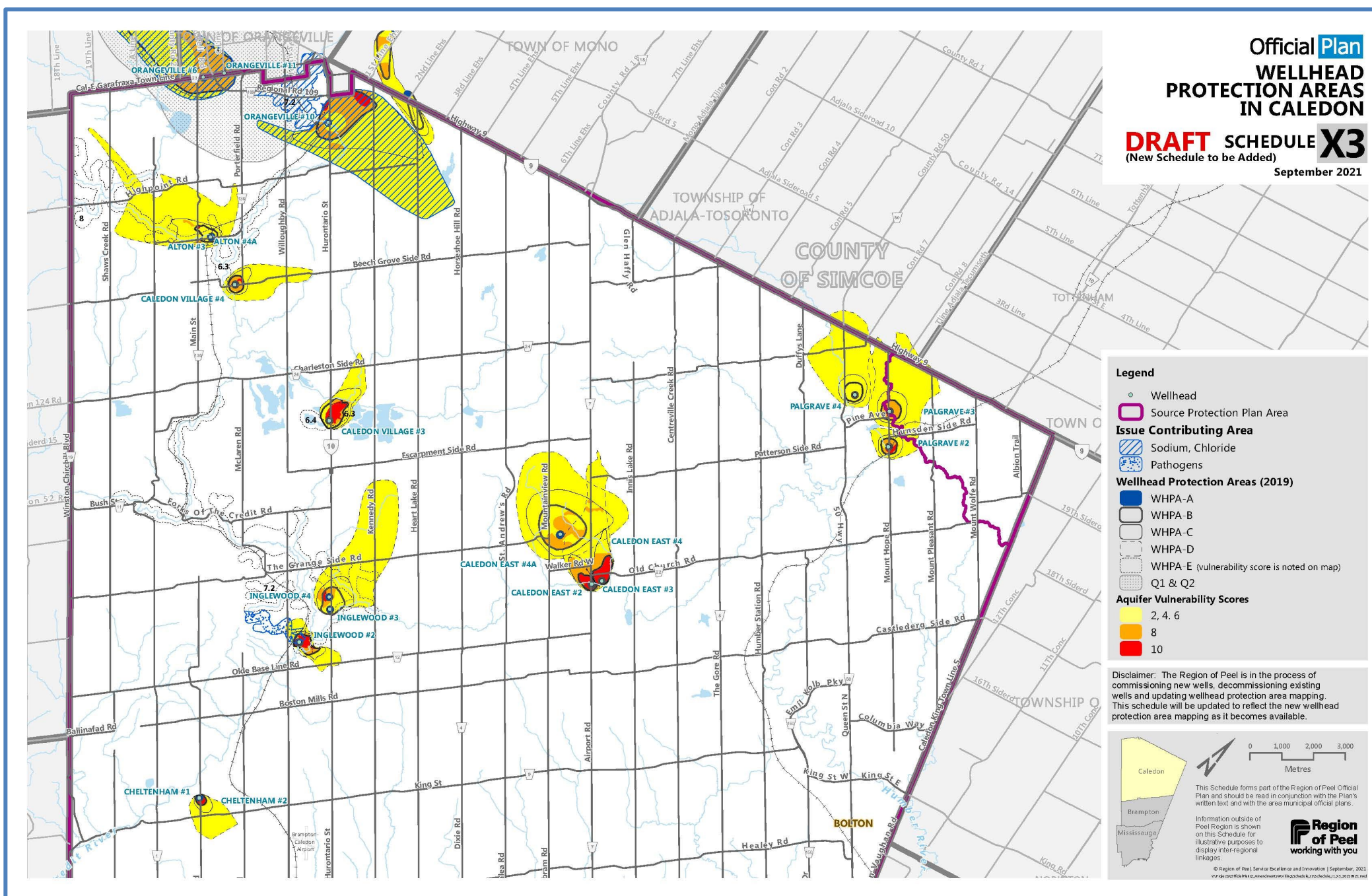


## Source Water Protection

### Key proposed mapping

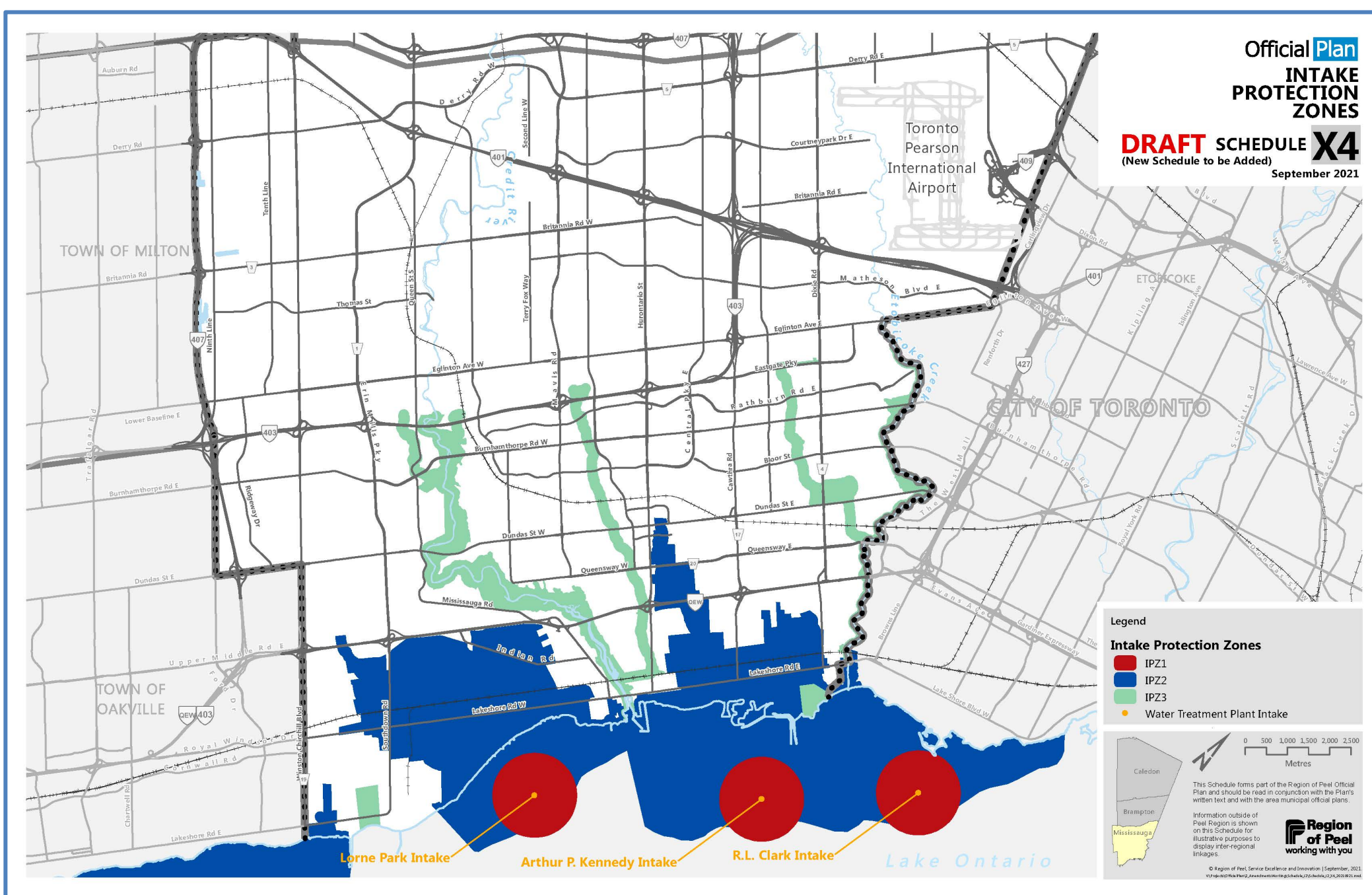
#### Wellhead Protection Areas and Issue Contributing Areas

Prohibit or restrict development or site alteration in wellhead protection areas and issue contributing areas where the development or site alteration is a significant drinking water threat.



#### Intake Protection Zones

Protect the Lake Ontario drinking water supply by promoting spills prevention, sharing information about source protection and implementing risk reduction and mitigation measures.

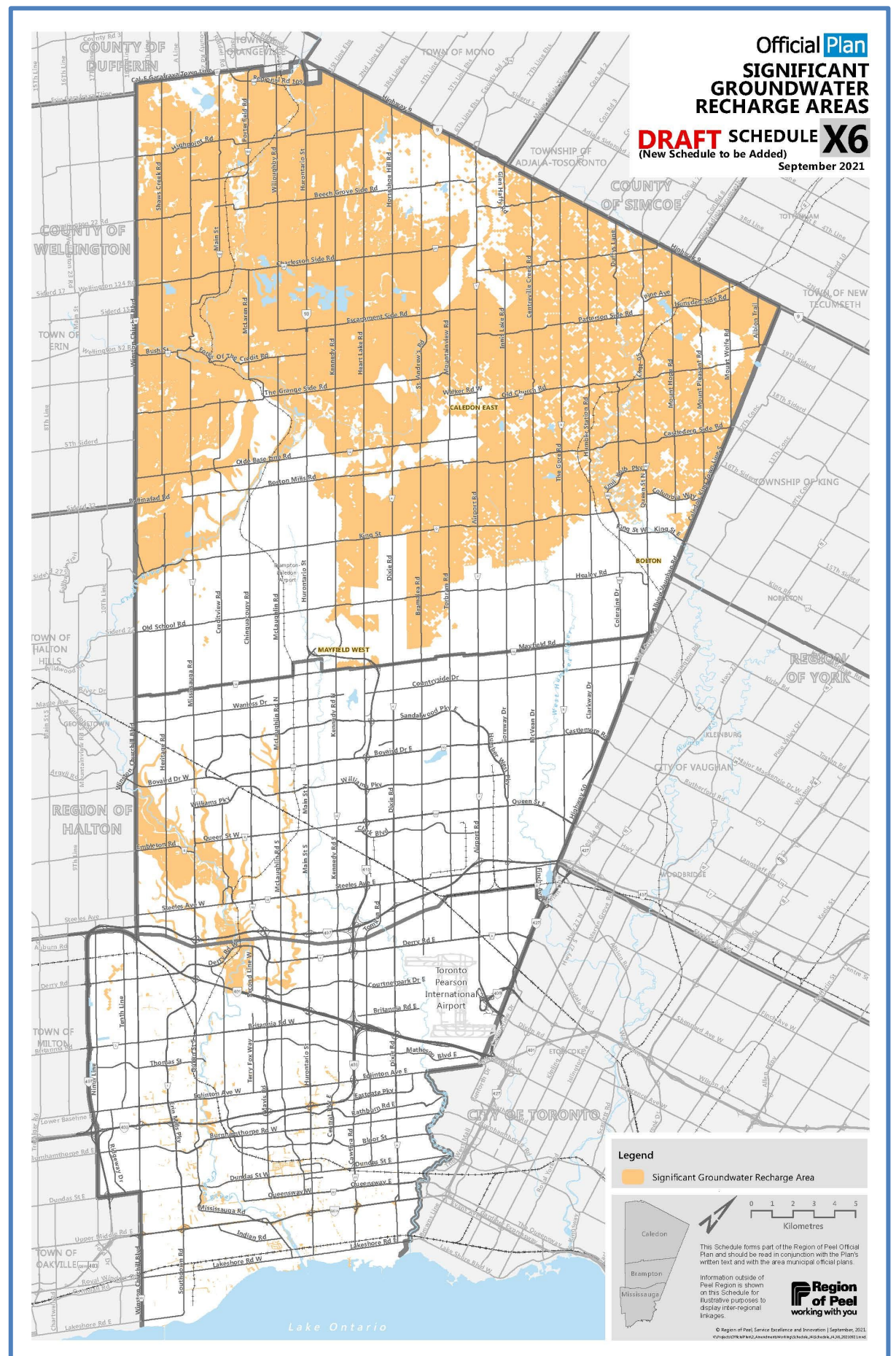
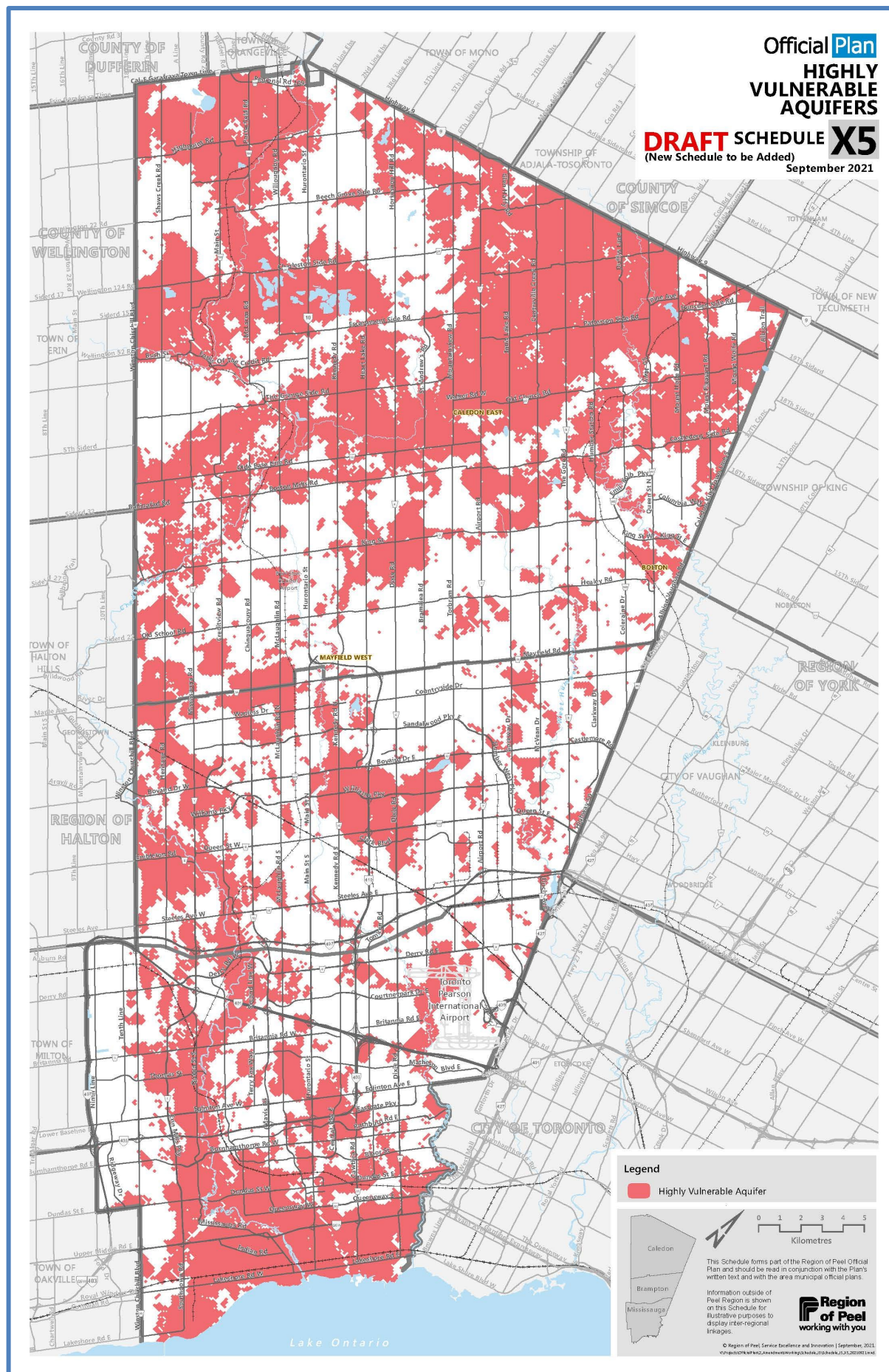






## Source Water Protection

### Key proposed policies and mapping



### Highly vulnerable aquifers

- Encourage the implementation of best management practices including requiring the submission of a contaminant management plan for land uses that are considered to be a high risk to groundwater and are located within areas of high aquifer vulnerability.
- Encourage the creation of a salt management plan to reduce the future use of salt in accordance with the applicable source protection plan.

### Significant groundwater recharge areas

- Require the implementation of low impact development stormwater practices to maintain pre-development recharge rates to the greatest extent feasible in significant groundwater recharge areas.
- Encourage the creation of a salt management plan to reduce the future use of salt in accordance with the applicable source.



