

Peel2051

Regional Official Plan Review and Municipal Comprehensive Review

Environment and Resources policies and mapping - responding to climate change

Planning and Growth Management Committee, October 21, 2021

Derek Lau

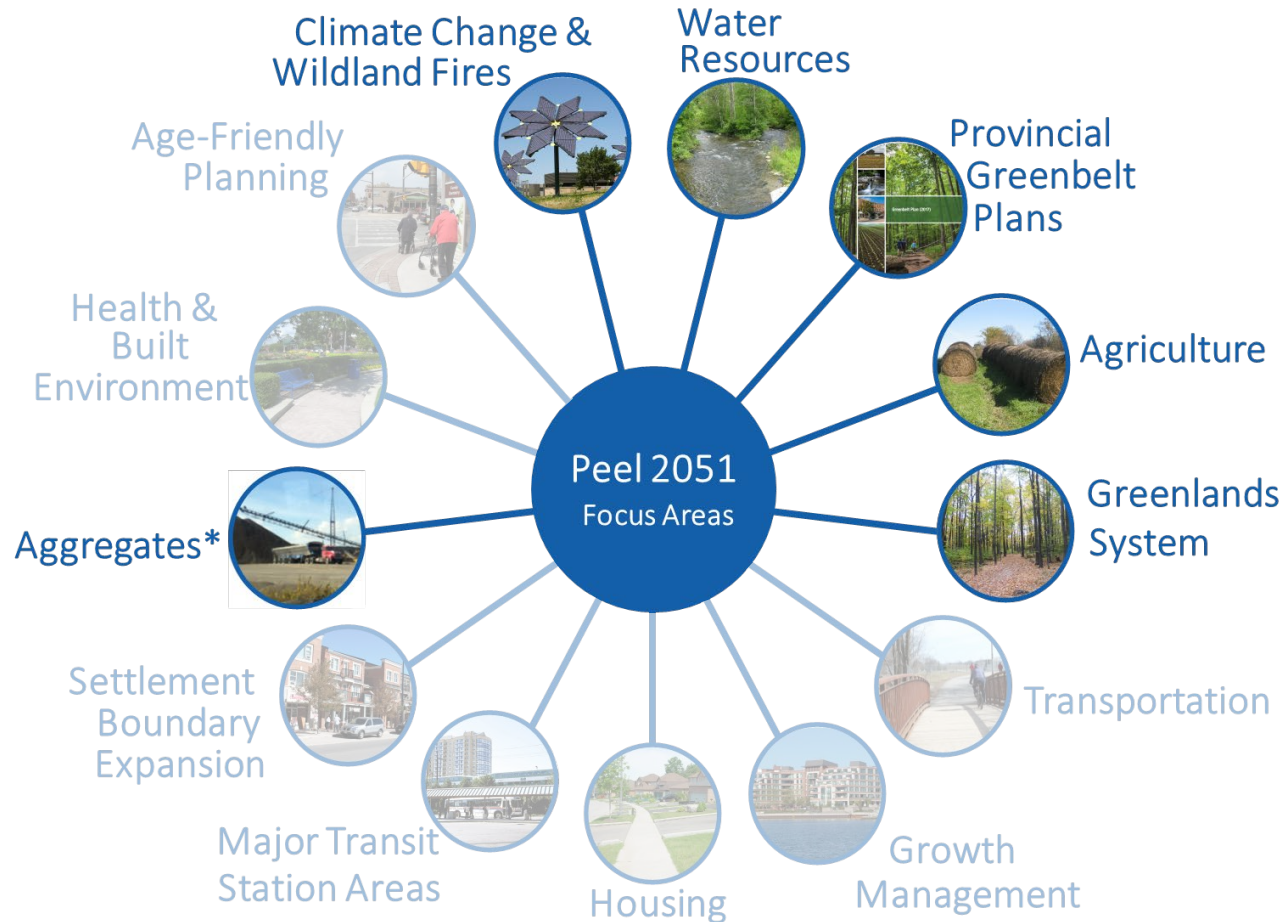
Regional Planning & Growth Management

Region of Peel



Environment and Resources

Related Focus Areas



Environment and resources sections of the Plan emphasize systems approach and integrate new policy addressing climate change across themes including growth management, transportation and infrastructure.

* Aggregates focus area proceeding separately as a staged policy review and ROPA.

Environment and Resources

Building a resilient Region

Climate Change policies are being integrated throughout the Regional Official Plan in key focus areas:



Climate Change



Water Resources



Greenlands System



**Agriculture &
Rural Systems**



**Provincial
Greenbelt Plans**



Growth Management



Transportation



Housing



**Settlement Area
Boundary Expansion**

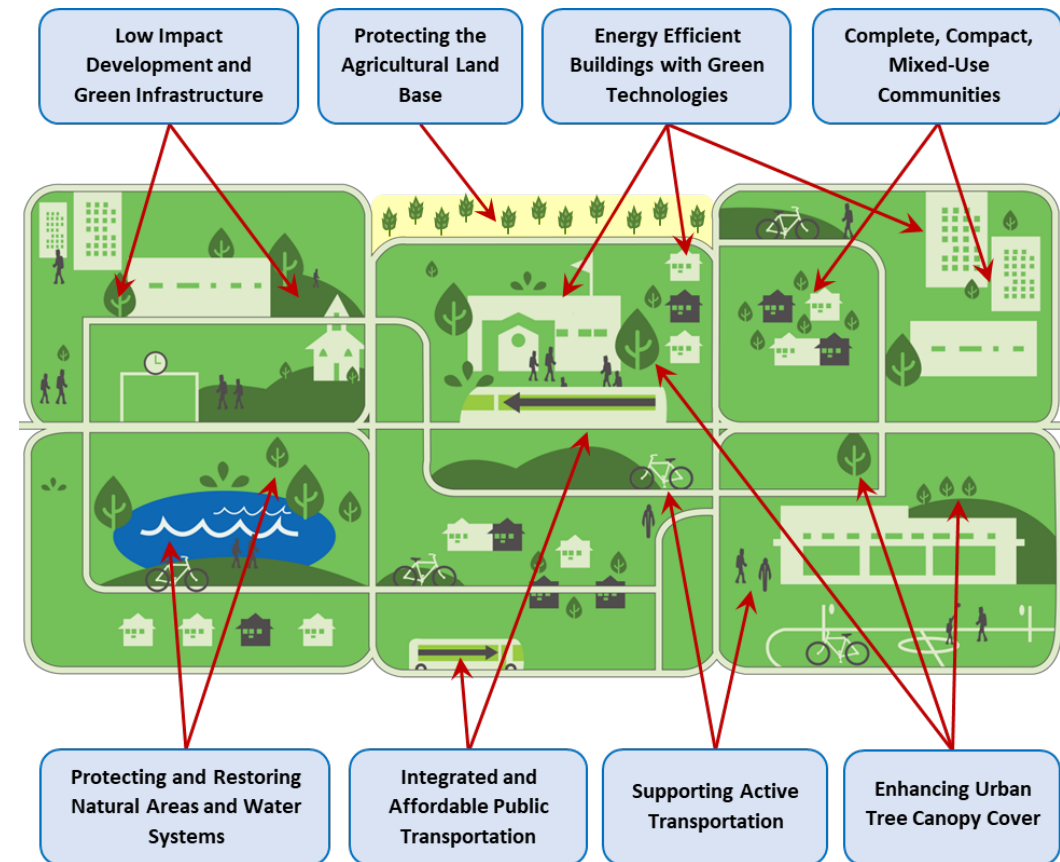
Environment and Resources

Climate Change Proposed Policies



Integrating a climate change framework within the Official Plan

- New section with policies for collaborative climate change planning to reduce greenhouse gas emissions, reduce vulnerability, and increase resilience and adaptation to a changing climate
- Climate change policies embedded throughout key theme areas of the Official Plan



Environment and Resources

Climate Change Proposed Policies - Energy



Communities will shift to more diverse, renewable and low carbon energy systems with policies that:

- Support community energy and emissions reduction planning
- Promote energy efficiency and conservation
- Require feasibility studies for alternative and renewable energy systems, including district energy systems
- Promote hybrid and/or electrical vehicles and infrastructure
- Support initiatives and establish requirements that work towards achieving low carbon/net zero emission buildings and communities



Environment and Resources

Climate Change Proposed Policies - Sustainability



Building resilience and sustainability by requiring implementation of local municipal green development standards including policies that:

- Encourage local municipalities to:
 - implement requirements for low carbon, compact, complete communities
 - increase energy efficiency in buildings
 - increase performance of stormwater management
 - reduce the urban heat island effect
 - promote the creation of innovative green infrastructure such as green roofs, white roofs, natural cover and urban tree canopy



Environment and Resources

Water Resources Proposed Policies



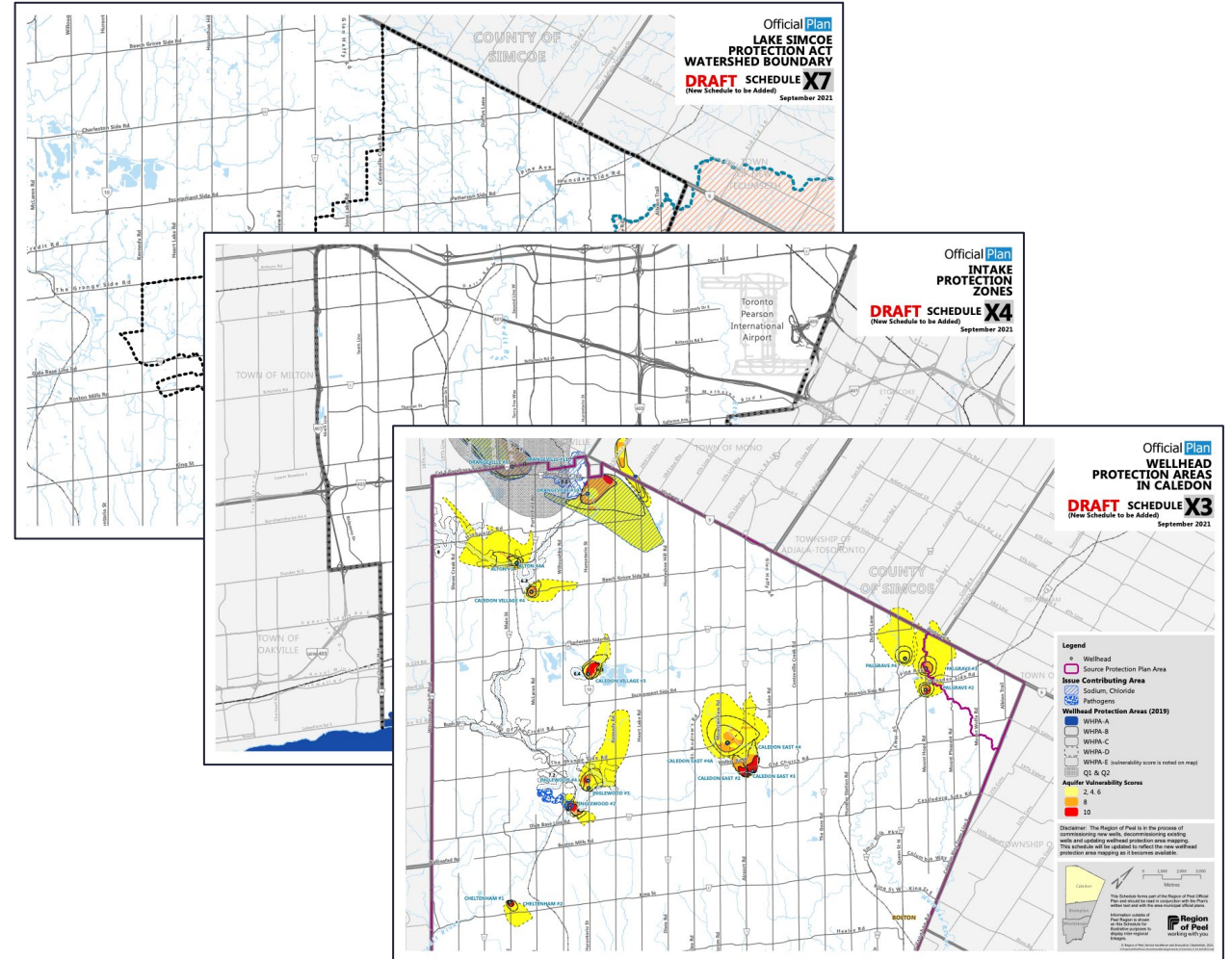
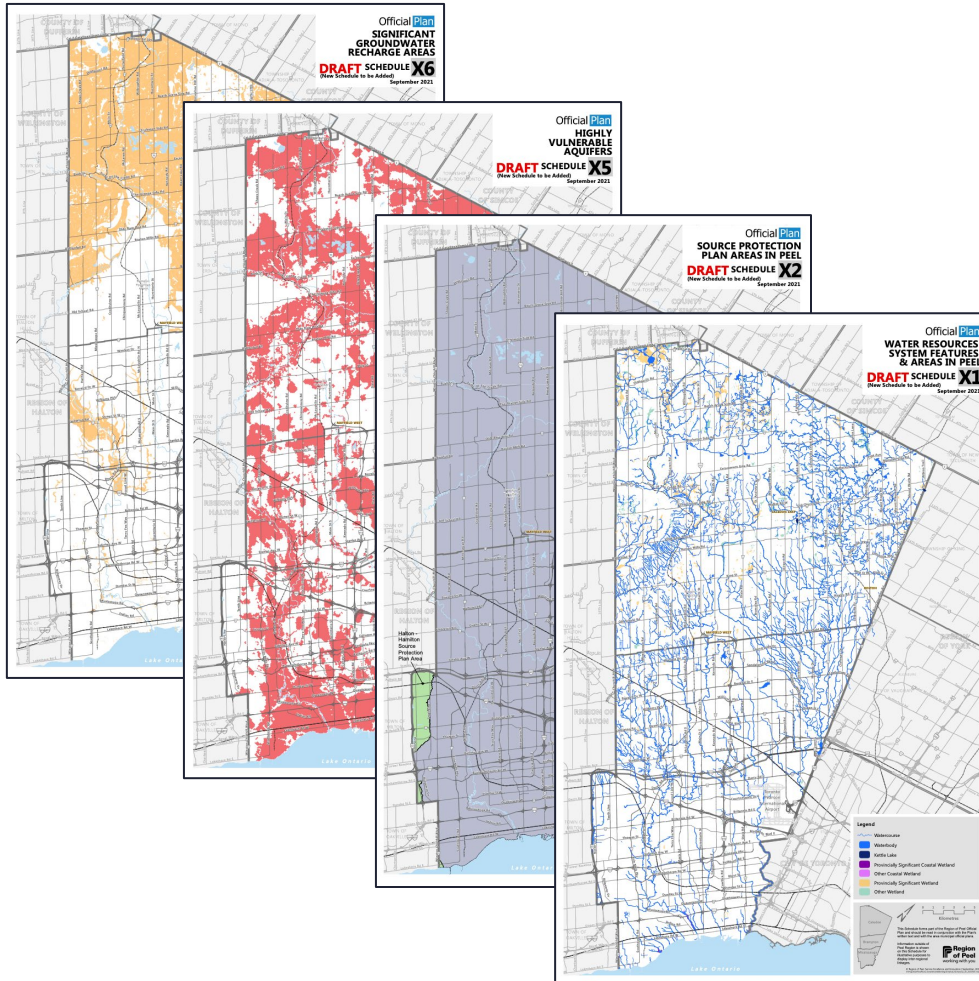
Integrating watershed planning to protect water resources in the Region

- Updated Water Resource System policy section to identify, protect, improve or restore vulnerable and sensitive surface and ground water
- Policies protect sources of drinking water by managing surrounding land uses and integrate watershed planning information in planning decisions
- New requirements for stormwater master plans and management plans
- Mapping of Water Resource System features and areas



Environment and Resources

Water Resources Proposed Mapping



Environment and Resources

Greenlands Systems Proposed Policies



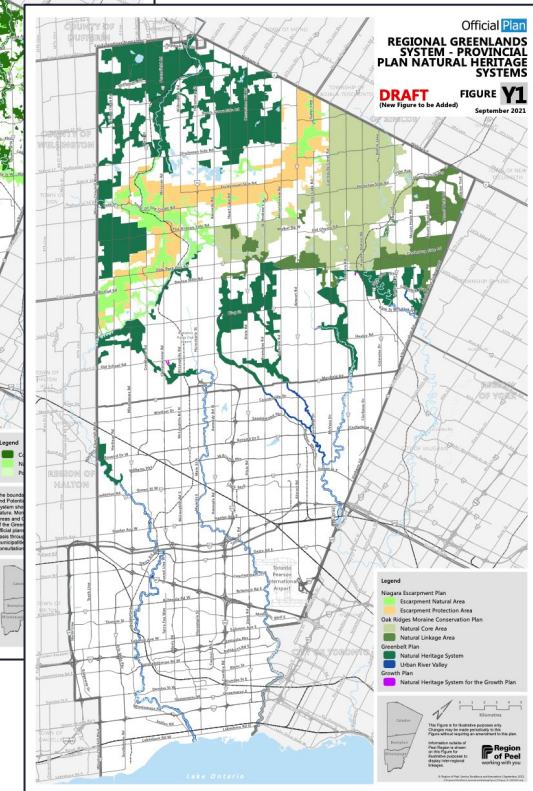
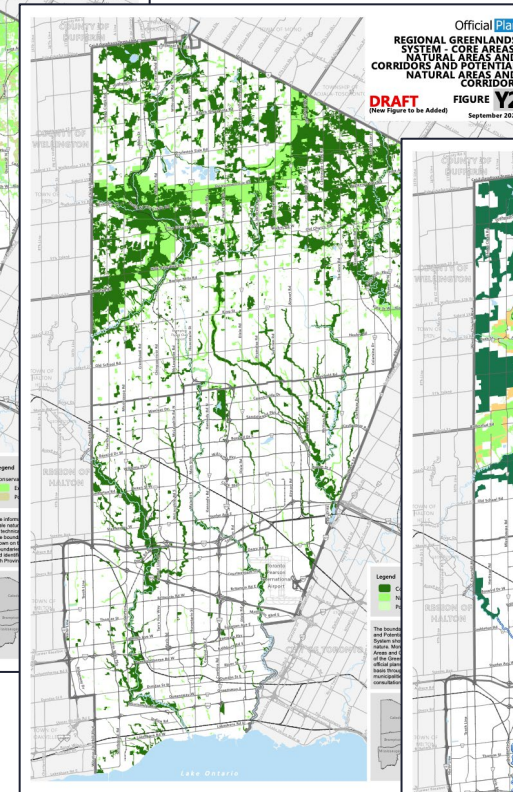
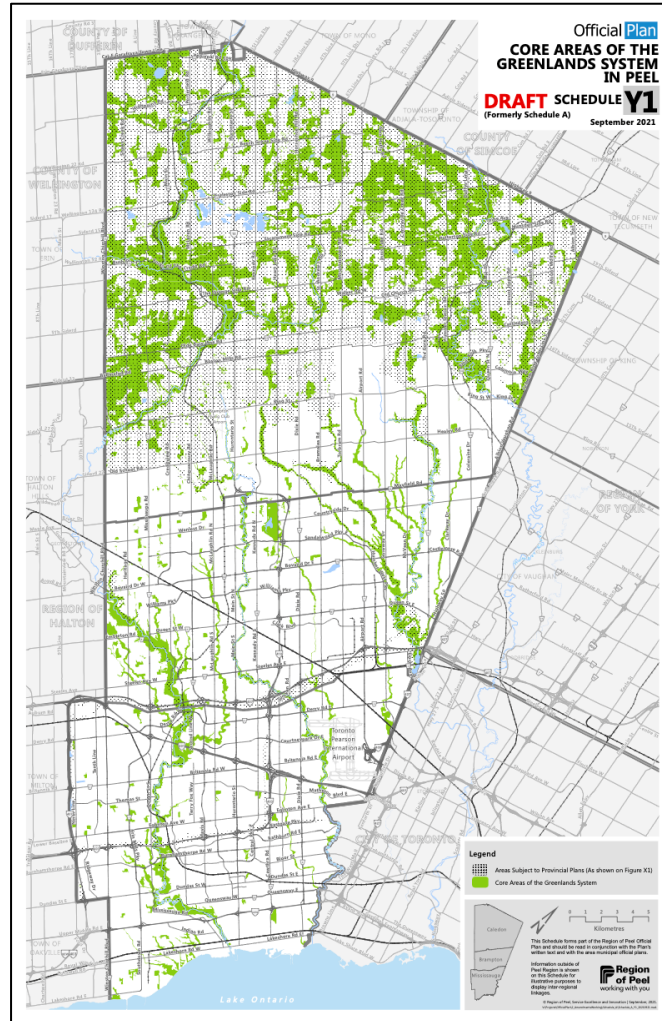
A healthy, functioning natural heritage system is a key component of a complete community

- Policies transition from feature-based to system-based natural heritage planning to protect, restore and enhance the natural environment
- Natural areas will be planned to adapt to a changing climate and provide residents with clean air, water and recreational opportunities
- Mapping updates include:
 - Provincial Plan NHS System designations
 - Core Areas of the Greenlands System mapping layers



Environment and Resources

Greenlands Systems Mapping



Environment and Resources

Agriculture and Rural Systems Proposed Policies



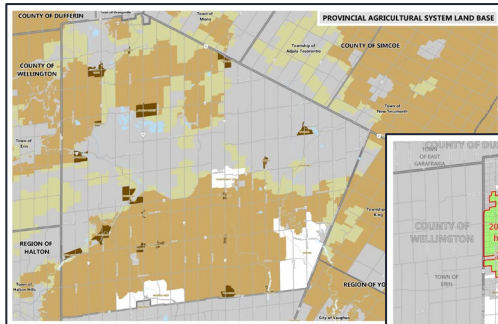
Protecting farmland and supporting agricultural viability

- Policies incorporate an agricultural system approach to protect Prime Agricultural Areas and support agriculture
- Key updates include:
 - identifying a Rural System and designating Rural Settlement Areas, Rural Lands and Prime Agricultural Areas
 - mapping of Prime Agricultural Area and Rural Land designations
 - new definitions and permissions for agricultural, agriculture-related and on-farm diversified uses
 - addition of policies that support urban agriculture and access to local, healthy food
 - helping farmers to implement agri-environmental practices

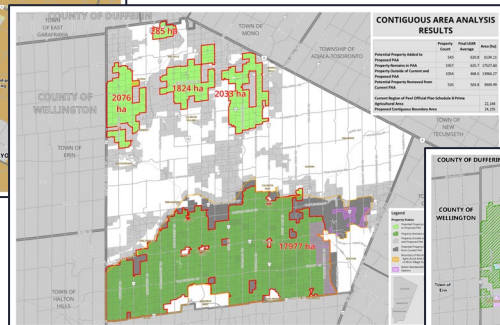


Environment and Resources

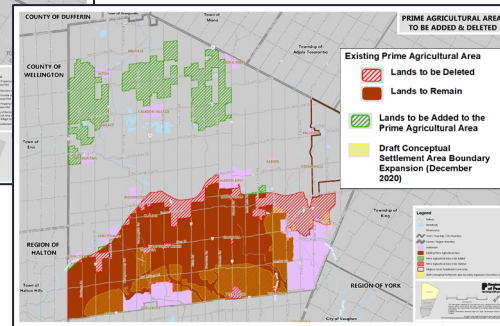
Agriculture and Rural Systems Mapping



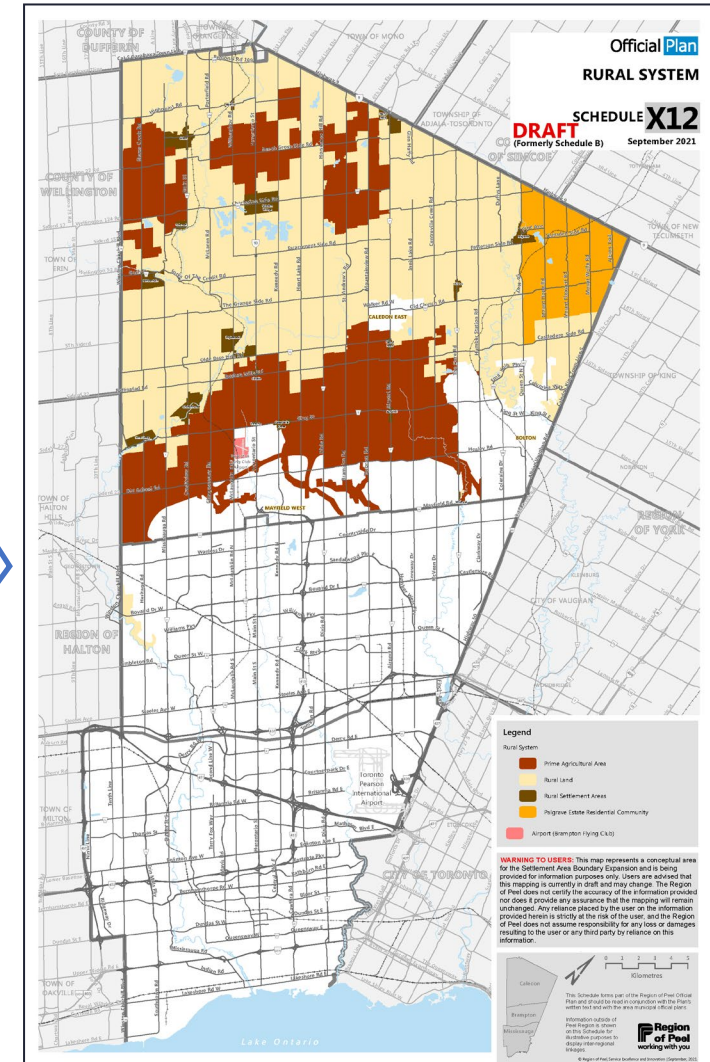
Provincial
Agricultural
System
mapping



Region / Town
Land Evaluation
and Area
Review Study
(LEAR)



Proposed refinement
of Prime Agricultural
Area, together with
Rural Lands provides
continuous land base
for agriculture



Environment and Resources

Building a resilient Region

Applying a climate change lens to growth management and settlement expansion:



Climate Change



Water Resources



Greenlands System



**Agriculture &
Rural Systems**



**Provincial
Greenbelt Plans**



Growth Management



Transportation



Housing



**Settlement Area
Boundary Expansion**

Integrating **Climate Change** in Growth Management, Transportation and Housing



Building more compact, complete, mixed-use communities that are resilient, walkable and transit supportive with policies that:

Growth Management: set minimum intensification and greenfield density targets and shift housing forms to medium and higher density types (e.g. mid-rise apartments)

Transportation: reduce GHG emissions and increase use of carpooling, transit, cycling and walking, with connections to designated nodes including Major Transit Station Areas (MTSA)

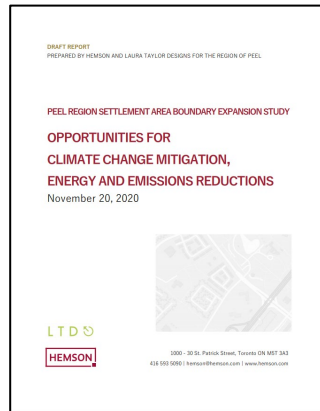
Housing: require green development standards that integrate climate resilience, energy and water efficiency in new and existing development



Settlement Area Boundary Expansion (SABE)



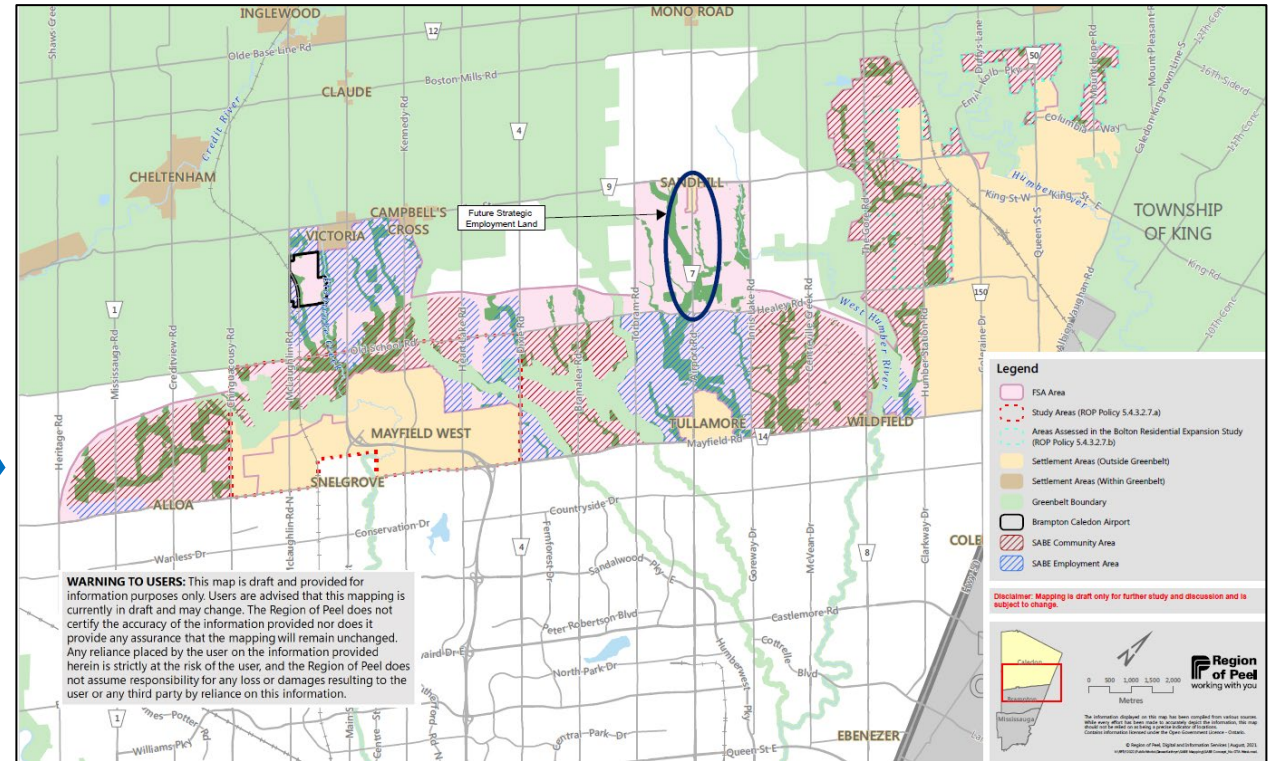
Planning future community areas to build low carbon communities adapted to a changing climate



Climate Change Mitigation, Energy and Emissions Reduction



Transportation, Health Assessment, Agricultural Impact Assessment, Environmental Screening and Scoped Subwatershed Study



Settlement Area Boundary Expansion (SABE)



Enhancing and connecting a resilient and sustainable Greenlands System

wood.

Scoping Subwatershed Study Part A – Existing Conditions and Characterization (Preliminary Draft)
Settlement Area Boundary Expansion
The Regional Municipality of Peel
Project # 198127

wood.

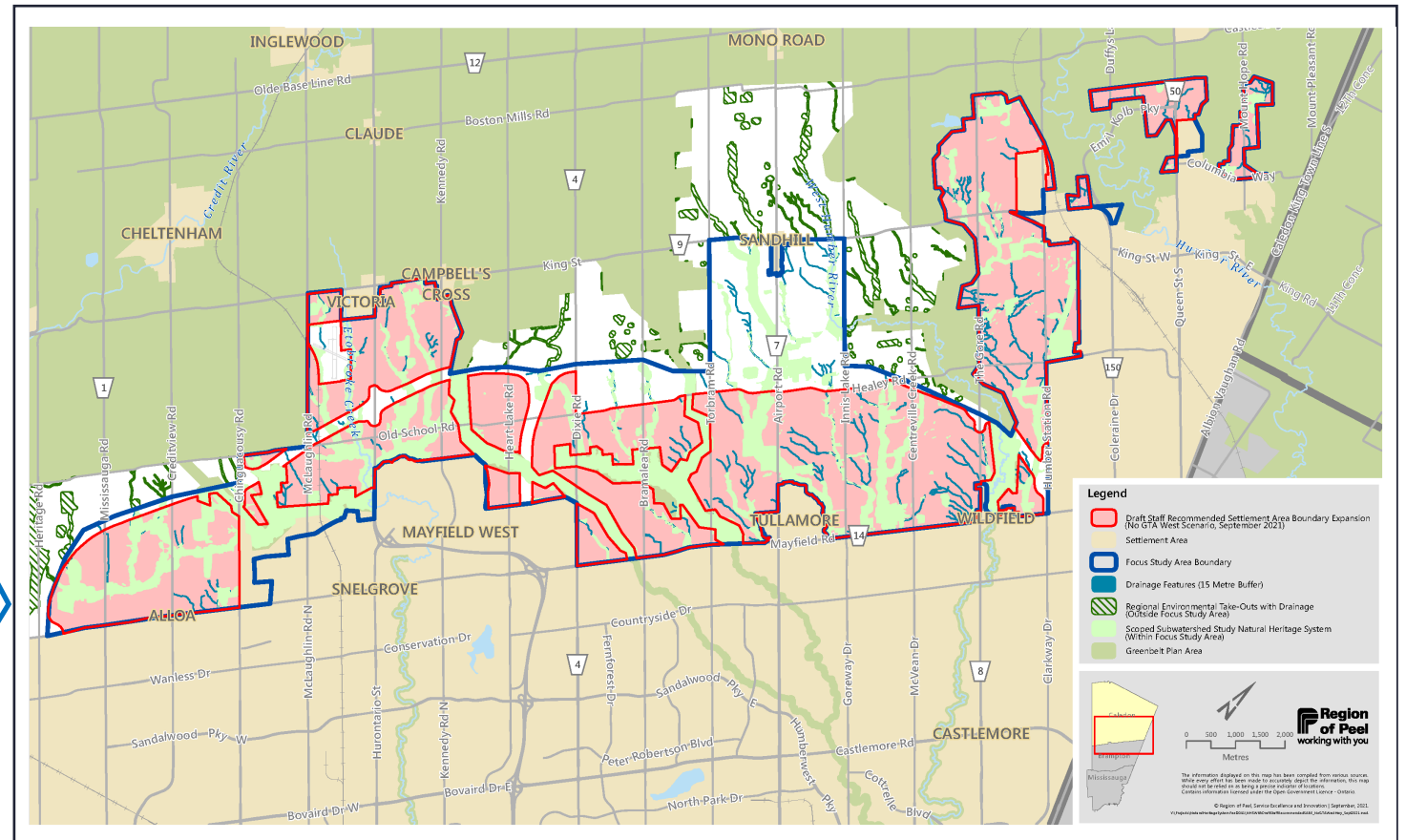
Scoping Subwatershed Study, Part B: Detailed Studies and Impact Assessment (Draft)
Settlement Area Boundary Expansion
Region of Peel
Project # 198127

wood.

Scoping Subwatershed Study, Part C: Implementation Plan (Draft)
Settlement Area Boundary Expansion
Region of Peel
Project # 198127

4/30/2021

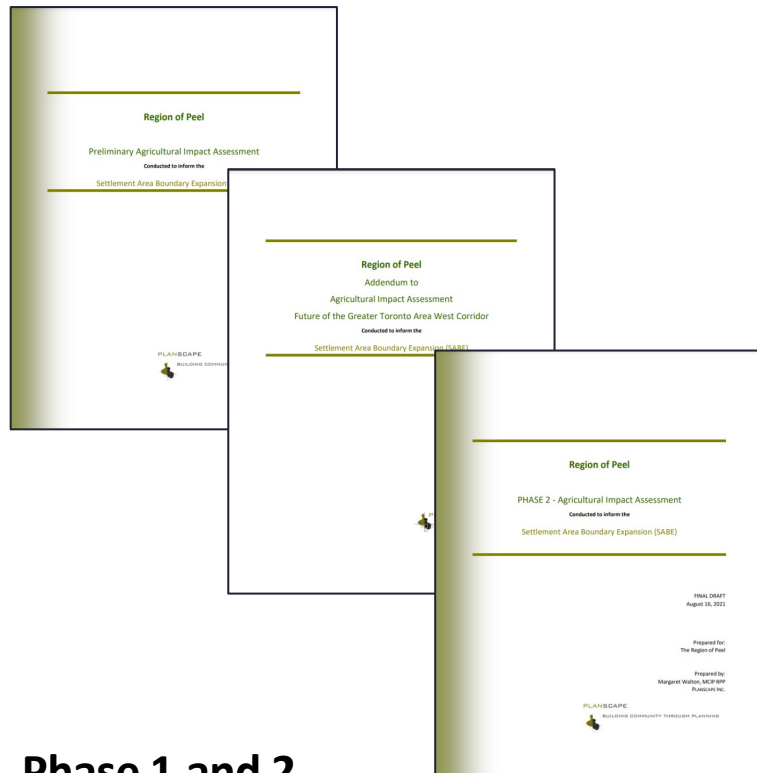
Phase 1, 2 and 3
Scoping Subwatershed Study



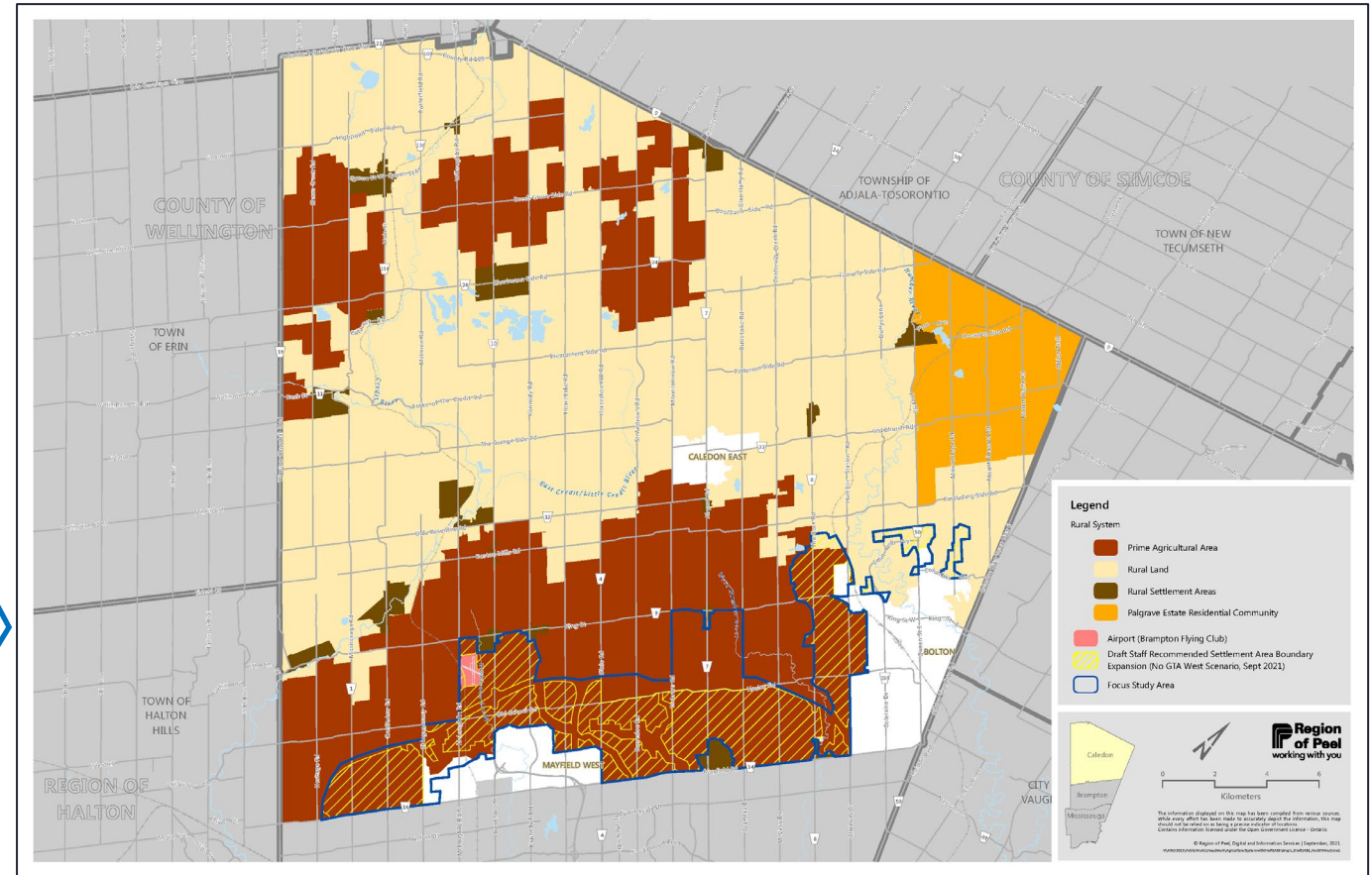
Settlement Area Boundary Expansion (SABE)



Mitigating impacts and minimizing loss of Prime Agricultural Areas



**Phase 1 and 2
Agricultural Impact Study**



Settlement Area Boundary Expansion (SABE)



Climate change and environment policies included in Regional Official Plan for 2051 New Community Areas will require:

- Development of compact, complete, mixed-use, communities with neighbourhood centres served by transit
- Community Energy and Emissions Reduction Planning to achieve net-zero / low carbon communities over time
- Climate Change Adaptation Planning to address vulnerability to changing climate conditions
- Protection of natural heritage and water resource systems subject to detailed subwatershed studies
- The phasing and mitigation of impacts to agriculture and agricultural operations with requirements for agricultural impact assessments

Next Steps / Questions

- Ongoing meetings with local municipal staff to respond to feedback
- Comments from the Province, public and other stakeholder groups
- Upcoming statutory consultations

