



# Peel Age-Friendly Communities

## Built Environment Assessment Project

Joy Simms

Principal Planner, Planning & Development Services

Region of Peel

Lindsay Toth

Planner & Project Lead

Gladki Planning Associates

# Project Team

gladki  
planning  
associates

**Lindsay Toth**

Project Lead

**Robert Walter-Joseph MCIP RPP**

Lead, Spatial & Data Analysis

**John Gladki FCIP RPP**

Strategic Advisor



**Joy Simms**

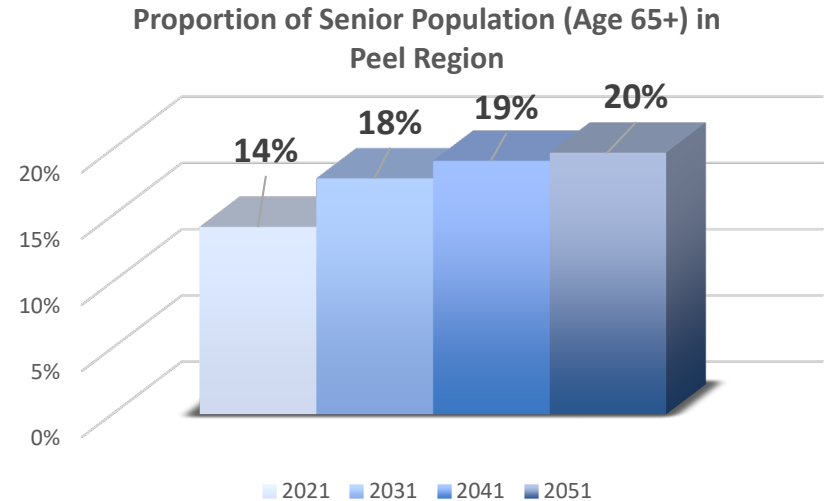
Principal Planner, Planning &  
Development Services

**April Fang**

Acting Principal Planner, Planning &  
Development Services

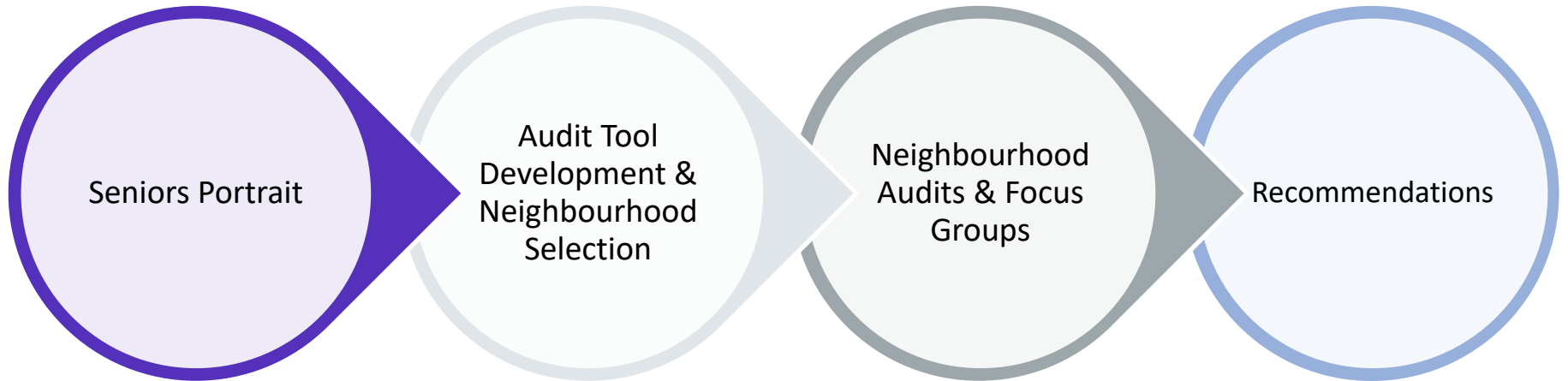
# Significance of the Project

- Seniors are the fastest growing age group in Peel
- The Region of Peel aims to create age-friendly communities
- The completion of this project supports the implementation of ROPA 27 Age-Friendly Planning policies

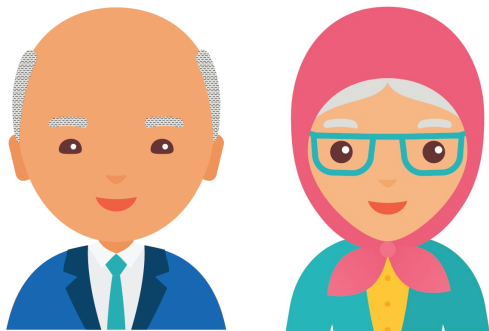


Region of Peel, 2021

# Project Overview



# Seniors Portrait



Demographic analysis reveals compounding vulnerabilities for the over-65 age group:

- Nearly half of seniors in Peel Region belong to a racialized group
- 15% of seniors have no knowledge of the English language
- 29% of seniors live in housing that is unaffordable to them
- 44% of seniors have sedentary lifestyles
- Over half of seniors report physical or cognitive impairments that limit their daily activities



# Age-Friendly Built Environment Audit Tool

- Contains 29 criteria based on the **World Health Organization's** eight dimensions of Age-Friendly Communities
- Designed to be sensitive to Peel's context and specific to the built environment
- Criteria assessed through:
  - ✓ Desktop Review
  - ✓ Spatial Analysis
  - ✓ Site Visits
  - ✓ Public Consultation






Source: City of Brampton

# Age-Friendly Built Environment Audit Tool

Example Criteria:

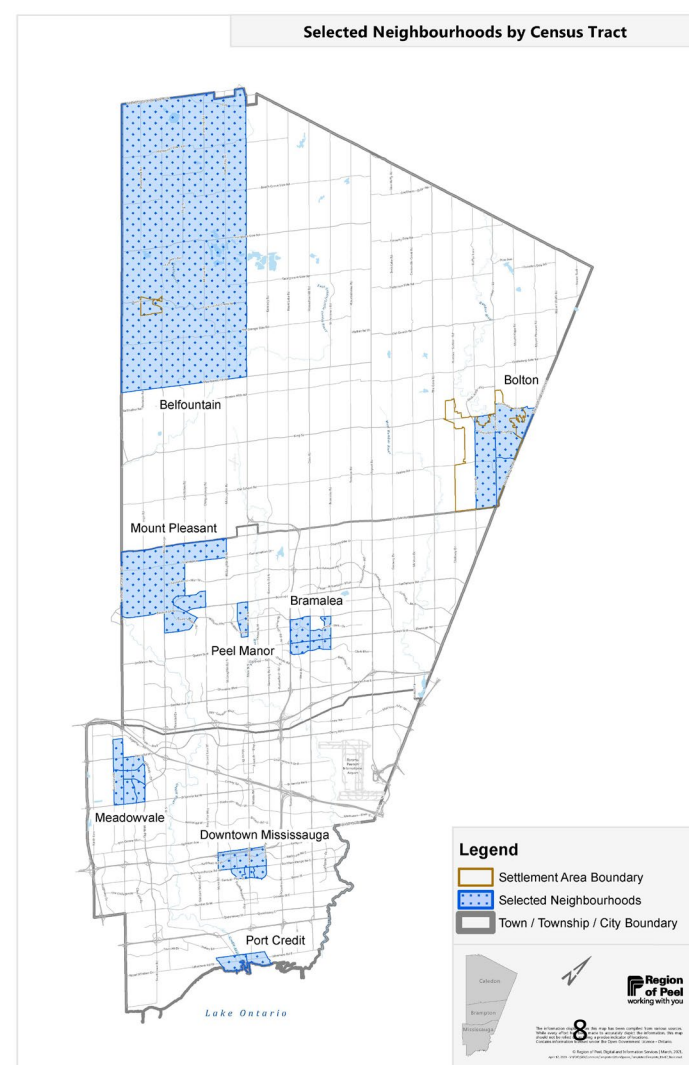
Example Assessment:

Criterion 1.2	Outdoor seating is available, particularly in parks, transit stops and public spaces, and spaced at regular intervals.		<i>Criteria is fulfilled</i>
Criterion 2.2	Essential health and social services are available in the community, are clustered or conveniently co-located (in Community Hubs) and can be reached by all means of transportation.		<i>Criteria is partially fulfilled</i>
Criterion 3.1	Alternative forms of transportation including walking, transit, cycling and carpooling are accessible, convenient, safe, equitable and seamless.		<i>Criteria is not fulfilled</i>

# Sample Neighbourhoods

Eight neighbourhoods were audited:

1. Cataract-Belfountain
2. Bolton
3. Mount Pleasant
4. Peel Manor
5. Bramalea
6. Meadowvale
7. Downtown Mississauga
8. Port Credit





# Focus Groups

We spoke to seniors and caregivers about their experiences but also heard from younger adults eager to share their ideas about healthy aging.

## What we heard:

- Housing affordability is a key concern. Multi-generational homes, additional residential units, and affordable rental may help.
- Active seniors love living in Caledon. However, they anticipate needing to move when their health deteriorates.
- Crossing Regional Road intersections feels unsafe to seniors and people with disabilities.
- Seniors worry about getting around once they can no longer drive.

# Age-friendly Neighbourhood Features



Trail connecting to the Meadowvale Community Centre.

Meadowvale's off-street trail system creates an active transportation network connecting key seniors' destinations



Commuter Dr., near Mount Pleasant GO Station.

Mount Pleasant features a multi-modal transit, diversity of housing types, and clustered community services and facilities.



Downtown Bolton, near Sterne St. & Queen St. S.

Downtown Bolton is very walkable with pedestrian infrastructure and small blocks.

# Trends in Neighborhood Gaps & Opportunities

Common gaps in age-friendliness relate to:



## Low-Density Residential Neighbourhoods

- Seniors want to age in place but critical age-friendly features are lacking; services & amenities are difficult to access without a car
- Significant built form change not anticipated in these areas



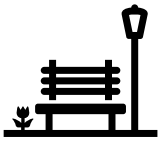
Winston Churchill Blvd. north of Derry Rd., Meadowvale.



New neighbourhood abutting future neighbourhood, Mount Pleasant.

# Trends in Neighborhood Gaps & Opportunities

Common gaps in age-friendliness relate to:



## Parks and Public Spaces

- Amenities for seniors are present in newly improved parks but are not commonplace across the Region
- Rest areas are inadequate, except along newly-constructed streets



Cedarstone Park, Cataract Belfountain.



Creditview Park, Mount Pleasant.

# Trends in Neighborhood Gaps & Opportunities

Common gaps in age-friendliness relate to:

## Transportation and Road Safety



- Transportation without use of private automobile a challenge for seniors
- Safety concerns for older pedestrians on Regional Roads



Bolton, near Highway 50 & McEwan Dr.



Bolton, near Highway 50 & McEwan Dr.



# Age-Friendly Built Environment Assessment Project

Draft Final Report

May 2022



## Table of Contents

<b>Executive Summary</b>	<b>7</b>
Significance of the Project	7
Diversity in Peel	7
Envisioning Age-Friendly Communities in Peel	8
Neighbourhood Trends	9
Key Recommendations	10
Peel's Age-Friendly Future	12
<b>Introduction</b>	<b>15</b>
<b>Seniors in Peel Region</b>	<b>17</b>
<b>Age-Friendly Built Environments</b>	<b>21</b>
Active Aging	21
Universal Design	22
Age-Friendly Communities	22
<b>Age-Friendly Planning in Peel Region</b>	<b>25</b>
<b>Audit Tool for Neighbourhoods</b>	<b>27</b>
<b>Sample Neighbourhood Selection</b>	<b>29</b>
<b>Neighbourhood Assessments</b>	<b>33</b>
Considerations	33
Port Credit - Mississauga	35
Downtown Mississauga - Mississauga	39
Meadowvale - Mississauga	43
Peel Manor - Brampton	47
Bramalea - Brampton	51
Mount Pleasant - Brampton	55
Bolton - Caledon	59
Cataract-Belfountain - Caledon	63
<b>Region-Level Gaps and Opportunities</b>	<b>69</b>
Gaps	69
Opportunities	69
<b>Recommendations</b>	<b>71</b>
Refinements to the Audit Tool	71
Next Steps	72
Recommendations Related to AFC Dimensions	73
<b>Implementation</b>	<b>81</b>
Implementation Approaches	81
<b>Conclusion</b>	<b>85</b>

# Some Key Recommendations

7. Follow up on the implementation status of all previously adopted recommendations related to age-friendly communities.
8. Optimize the policy framework in the Peel 2051 Regional Official Plan Review to support age-friendly communities.  
*(Complete)*
14. Continue to apply the Healthy Development Assessment to new development applications.

# Some Key Recommendations

- 39.** Enhance safety, accessibility, and legibility of Regional Road intersections for seniors and pedestrians with disabilities.
- 57.** Study opportunities to retrofit low-density residential neighbourhoods to improve age-friendliness.
- 75.** Create a mechanism for comments on development applications from seniors and other experts in age- friendly design.



# Project Implementation

## Implementation Approaches



New Regional Objective



Enhanced Implementation for Existing Objective



Collaboration with Area Municipalities



Capital Project / Funding

# Example Peel Initiatives Underway

- New April 2022 Region of Peel Official Plan
  - Recommendations informed affordable housing, transportation, age-friendly planning, health and built environment policies
- Vision Zero, Sustainable Transportation Strategy Update
- Transit advocacy and staff input into local and Provincial transportation studies & transit station redevelopment
- Design & Spacing of Rest Areas  
Guideline (for Regional Roads)



# Example Peel Initiatives Underway

- Healthy Development Framework and Assessments
- Active Parks Design Guide
- Healthy Building Design Guidelines (pilot) and Recreation Centre Audit (pilot)
- Peel Housing and Homelessness Plan, Affordable Housing Design Criteria, My Home Second Unit Renovation Program

A preliminary **Recommendation Implementation Status** summary is available online

# Next Steps

## **Phase 1 (Complete):** Age-friendly Built Environment Assessment

## **Phase 2 (To be undertaken):**

- Report and recommendations will inform continued engagement on AFP
- Staff working group will explore the feasibility, prioritization, resource needs, and a plan for implementing the recommendations
- Monitor upcoming 2021 census data releases
- Public survey on seniors' experiences aging in Peel
- Engage with local municipal partners and other agencies
- Report back on feasibility and implementation of recommendations in 2023



# Learn More Here:



[peelregion.ca/officialplan/review/focus-areas/age-friendly-planning.asp](https://peelregion.ca/officialplan/review/focus-areas/age-friendly-planning.asp)

