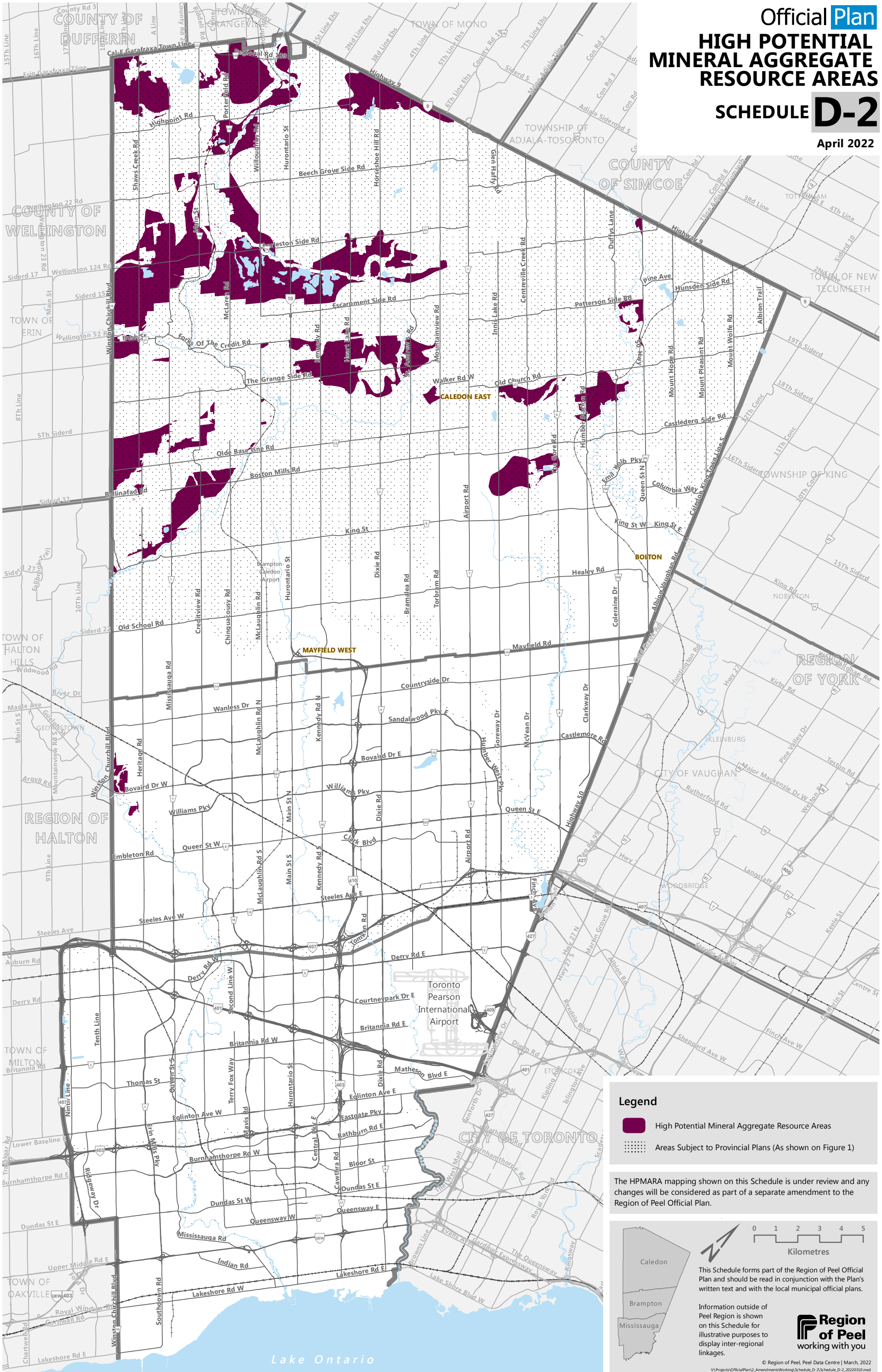


Official Plan
**HIGH POTENTIAL
 MINERAL AGGREGATE
 RESOURCE AREAS**
SCHEDULE D-2

April 2022



Legend

- High Potential Mineral Aggregate Resource Areas
- Areas Subject to Provincial Plans (As shown on Figure 1)

The HPMARA mapping shown on this Schedule is under review and any changes will be considered as part of a separate amendment to the Region of Peel Official Plan.

0 1 2 3 4 5
 Kilometres

This Schedule forms part of the Region of Peel Official Plan and should be read in conjunction with the Plan's written text and with the local municipal official plans.

Information outside of Peel Region is shown on this Schedule for illustrative purposes to display inter-regional linkages.

Region of Peel
 working with you

© Region of Peel, Peel Data Centre | March, 2022
 V:\Projects\OfficialPlan\2_AmendmentsWorking\Schedule_D-2\Schedule_D-2_20220310.mxd