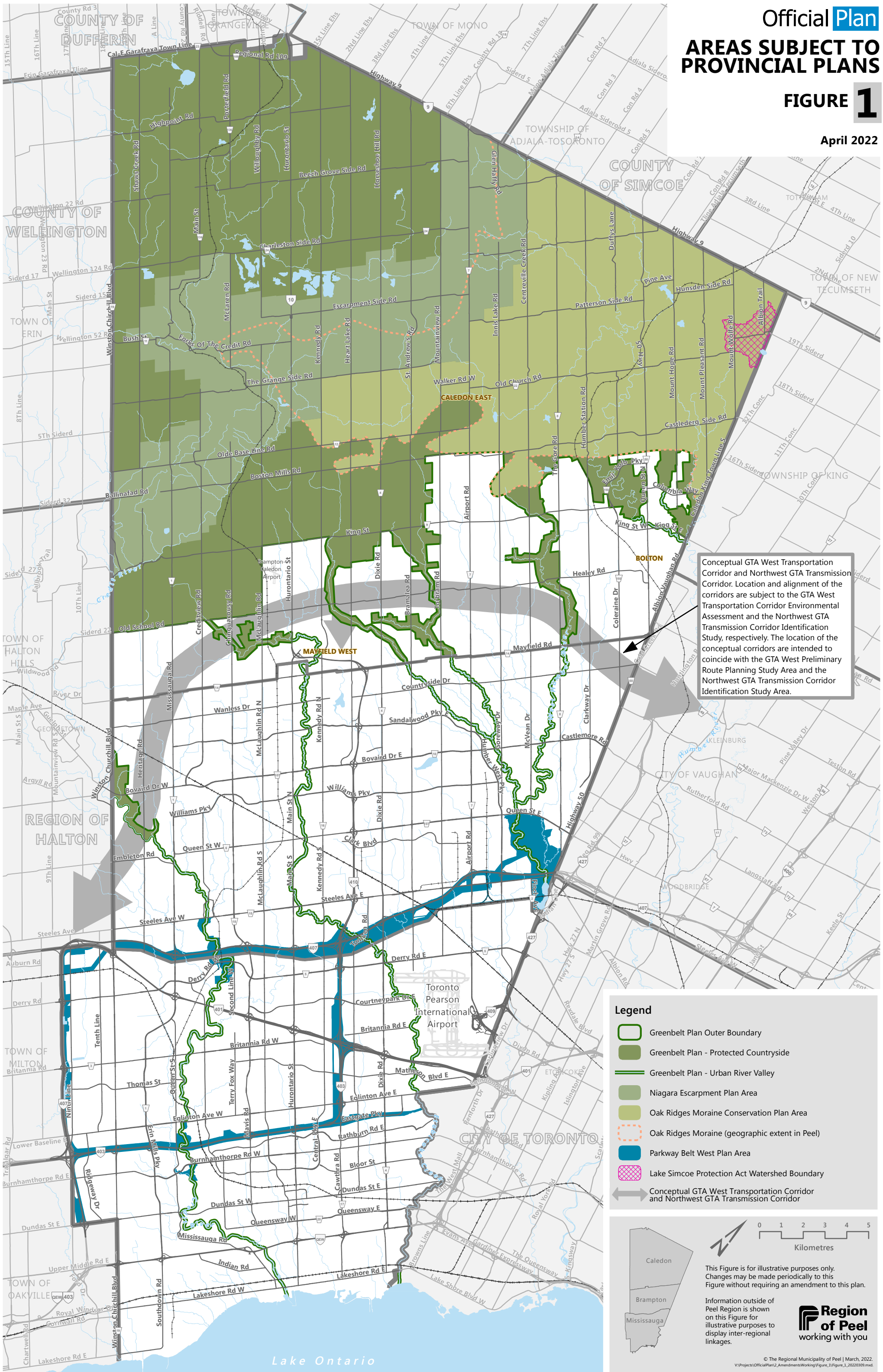


AREAS SUBJECT TO PROVINCIAL PLANS

FIGURE 1

April 2022



Conceptual GTA West Transportation Corridor and Northwest GTA Transmission Corridor. Location and alignment of the corridors are subject to the GTA West Transportation Corridor Environmental Assessment and the Northwest GTA Transmission Corridor Identification Study, respectively. The location of the conceptual corridors are intended to coincide with the GTA West Preliminary Route Planning Study Area and the Northwest GTA Transmission Corridor Identification Study Area.

Legend

- Greenbelt Plan Outer Boundary
- Greenbelt Plan - Protected Countryside
- Greenbelt Plan - Urban River Valley
- Niagara Escarpment Plan Area
- Oak Ridges Moraine Conservation Plan Area
- Oak Ridges Moraine (geographic extent in Peel)
- Parkway Belt West Plan Area
- Lake Simcoe Protection Act Watershed Boundary
- Conceptual GTA West Transportation Corridor and Northwest GTA Transmission Corridor



This Figure is for illustrative purposes only. Changes may be made periodically to this Figure without requiring an amendment to this plan.

Information outside of Peel Region is shown on this Figure for illustrative purposes to display inter-regional linkages.

