

**2021 Budget**

**Thriving**

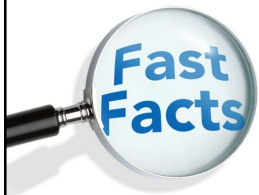
**Investing** to build our  
**Community for Life**

## Wastewater

Safely treating  
millions of litres  
of wastewater  
everyday

 **Region of Peel**  
working with you





**680 million**

litres of wastewater  
treated every day

**3,680 km**

length of sanitary sewer  
mains

**450 km**

of sewer mains inspected  
annually

**332,550**

wastewater accounts

## How We Are Adapting

ADAPTING

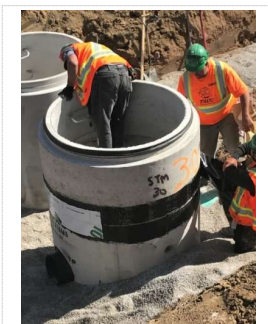
- Optimizing the operating process in response to COVID-19
- Investing in new technology and construction standards
- Addressing the top inflow and infiltration areas
- Reducing our carbon footprint
- Expanding the sanitary sewer system to manage excess flows
- Reviewing the Wastewater Industrial Surcharge Program



**NEW**  
in 2021

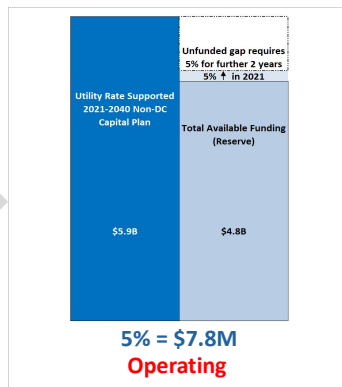
## 2021 Service Investment

### Service Pressure



- Growth
- Aging infrastructure

### Investment



### Service Outcome

**Peel's  
infrastructure is  
maintained in a  
state of good  
repair**

**NEW**  
in 2021

## 2021 Service Investment

### Service Pressure



- Growth
- Aging infrastructure
- Climate change

### Investment

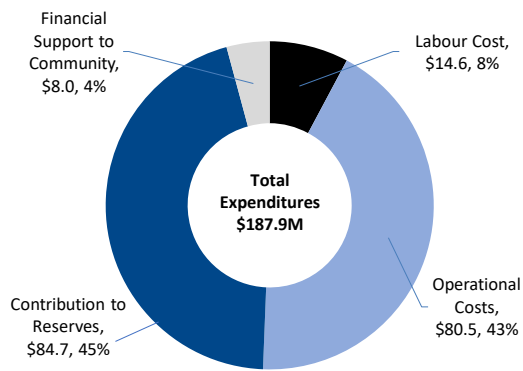


**+\$239K**  
(Recovered from capital)  
**No Operating Impact**  
2 Regular Complement

### Service Outcome

Wastewater is removed in a safe and environmentally responsible manner

### 2021 Operating Budget (\$M)



Utility Rate	External Recoveries
\$177.3; 94%	\$10.6; 6%

## Summary of 2021 Net Operating Budget

<b>2020 Net Base Budget (In \$Millions)</b>	<b>\$158.3</b>
<b>Cost to maintain 2020 service level</b>	
• Inflation: Labour costs/Goods and services	\$1.0
• Reduction in tax support of utility operations	1.4
• OCWA contractual increases	0.9
• Cost mitigation	(0.1)
• Electricity savings	(1.1)
• Managing risk to declining consumption	(1.0)
<b>Sub-total: Cost to maintain 2020 service level</b>	<b>\$1.2</b>
<b>2021 Service Demand</b>	
• 5% rate increase to maintain infrastructure	\$7.8
• Inflow & Infiltration mitigation (capital recovery)	-
• Wastewater pumping station capital improvement (capital recovery)	-
• COVID-19 impact – PPE and enhanced cleaning (Phase 1 Safe Restart Fund)	-
<b>2021 Proposed Net Budget Change from 2020</b>	<b>\$9.0</b>
<b>Proposed Total 2021 Net Budget</b>	<b>\$167.3</b>

Note: Numbers may not add up due to rounding.

## 2021 Capital Budget – \$404.6 Million

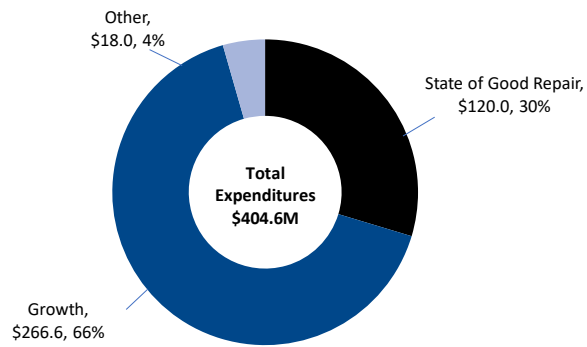
### Key Highlights

- \$180M for East-West Diversion Sanitary Trunk Sewer
- \$86M for Region's linear wastewater infrastructure to maintain a state of good repair
- \$20M for Centre View Sanitary Trunk Sewer
- \$34M for G.E. Booth Wastewater Treatment Plant major maintenance and odour control improvements
- \$15M for lining of the West Sanitary Trunk Sewer Twinning





### 2021 Capital Budget (\$M)



Internal Reserves	Development Charges
\$138.0; 34%	\$266.6; 66%

## Key Financial Information

	Resources to Achieve Level of Service		
	2020	2021	
Total Expenditure (\$M)	\$178.8	\$187.9	
Total Revenue (\$M)	\$20.5	\$20.6	
Net Expenditures (\$M)	\$158.3	\$167.3	
Full-time Staffing Resources	242	244	
Capital Investment (\$M)	\$429.7	\$404.6	
10-Year Capital Investment (\$M)	\$3,409.5	\$3,945.4	
Outlook Years	2022	2023	2024
Net Increase (\$M)	\$13.9	\$12.6	\$3.0*
% Increase	8.3%	6.9%	1.5%

\*Excludes the 5% increase to maintain infrastructure; to be reviewed by the end of 2023.